

Product datasheet for **RG228438**

VEGF Receptor 1 (FLT1) (NM_001160031) Human Tagged ORF Clone

Product data:

Product Type:	Expression Plasmids
Product Name:	VEGF Receptor 1 (FLT1) (NM_001160031) Human Tagged ORF Clone
Tag:	TurboGFP
Symbol:	VEGF Receptor 1
Synonyms:	FLT; FLT-1; VEGFR-1; VEGFR1
Mammalian Cell Selection:	Neomycin
Vector:	pCMV6-AC-GFP (PS100010)
E. coli Selection:	Ampicillin (100 ug/mL)



[View online »](#)

ORF Nucleotide Sequence:

>RG228438 representing NM_001160031
 Red=Cloning site Blue=ORF Green=Tags(s)

TTTTGTAATACGACTCACTATAGGGCGGCCGGGAATTCGTCGACTGGATCCGGTACCGAGGAGATCTGCC
 GCC**GCGATCGCC**

ATGGTCAGCTACTGGACACCGGGTCTGCTGTGCGCGTCTGCTCAGCTGTCTGCTTCTCACAGGATCTA
 GTTCAGGTTCAAATAAAAGATCCTGAACTGAGTTAAAAGGCACCCAGCACATCATGCAAGCAGGCCA
 GACTGTCATCTCCAATGCAAGGGGAAGCAGCCATAAATGGTCTTTCCTGAAATGGTGAAGGAA
 AGCGAAAGGCTGAGCATAACTAAATCTGCTGTGGAAGAAATGGCAAACAATTCTGCAGTACTTTAACCT
 TGAACACAGCTCAAGCAAACCACTGGCTTCTACAGCTGCAAAATCTAGCTGTACCTACTTCAAAGAA
 GAAGGAAACAGAATCTGCAATCTATATTTTATTAGTGATACAGGTAGACCTTTCGTAGAGATGTACAGT
 GAAATCCCGAAATTATACACATGACTGAAGGAAGGGAGCTCGTCATTCCCTGCCGGTTACGTCACCTA
 ACATCACTGTTACTTTAAAAAAGTTCCACTTGACACTTTGATCCCTGATGGAAAACGCATAATCTGGGA
 CAGTAGAAAGGGTTCATCATATCAAATGCAACGTACAAAGAAATAGGGCTTCTGACCTGTGAAGCAACA
 GTCATGGGCATTTGTATAAGACAACTATCTCACACATCGACAAACCAATAACAATCATAGATGTCCAAA
 TAAGCACACCACGCCAGTCAAATTAAGAGGCCATACTCTTGTCTCAATTGTACTGCTACCACTCC
 CTTGAACACGAGAGTTCAAATGACCTGGAGTTACCCTGATGAAAAAATAAGAGAGCTTCCGTAAGGCGA
 CGAATTGACCAAAGCAATCCCATGCCAACATATTCTACAGTGTCTTACTATTGACAAAATGCAGAACA
 AAGACAAAGGACTTTATACTTGTGCGTGAAGGAGTGGACCATCATTCAAATCTGTTAACACCTCAGTGCA
 TATATATGATAAAGCATTCACTGTGAAACATCGAAAACAGCAGGTGCTTGAACCGTAGCTGGCAAG
 CGGTCTTACCGGCTCTCTATGAAAGTGAAGGCATTTCCCTCGCCGGAAGTTGTATGGTTAAAGATGGGT
 TACCTGCGACTGAGAAATCTGCTCGTATTTGACTCGTGGCTACTGTTAATTATCAAGGACGTAACCTGA
 AGAGGATGCAGGGAATTATAACAATCTTGTCTGAGCATAAAACAGTCAAATGTGTTTAAAAACCTCACTGCC
 ACTCTAATTGTCAATGTGAAACCCAGATTTACGAAAAGGCCGTGTCATCGTTTCCAGACCCGGCTCTCT
 ACCCACTGGGCAGCAGACAAATCCTGACTTGTACCGCATATGGTATCCCTCAACCTACAATCAAGTGGTT
 CTGGCACCCCTGTAACCAATAATCATTCCGAAGCAAGGTGTGACTTTTGTCCAATAATGAAGAGTCTTTT
 ATCCTGGATGCTGACAGCAACATGGGAAACAGAATTGAGAGCATCACTCAGCGCATGGCAATAATAGAAG
 GAAAGAATAAGCTTCCACCAGCTAACAGTCTTTTCAATGTTGCCACCTACAAGCTTCTCTTCAACTACTT
 CCATTTCTTCCG

ACGCGTACGCGGCCGCTCGAG - GFP Tag - GTTTAA

Protein Sequence:

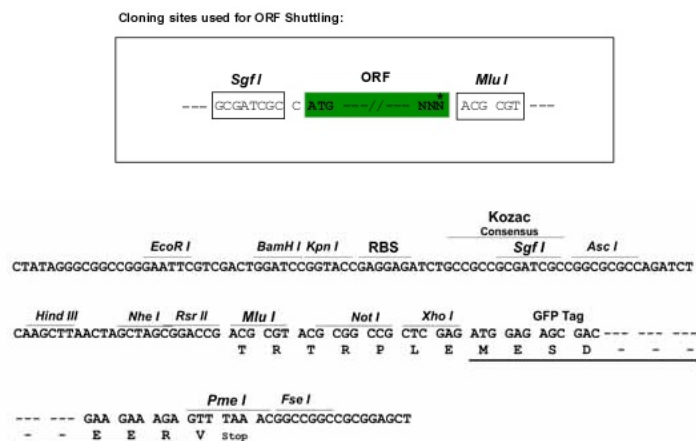
>RG228438 representing NM_001160031
 Red=Cloning site Green=Tags(s)

MVSYWDTGVLLCALLSCLLLTGSSSGSKLKDPELSLKGTHQIMQAGQTLHLQCRGEAAHKWSLPEMVSKE
 SERLSITKSACGRNGKQFCSTLTLNQAQNHGTFYSCKYLAVPTSCKKETESAIYIFISDTGRPFVEMYS
 E.IPEIIHMTGRELVIPCRVTSNITVTLKFLPLDTLIPDGKRIIWDNRKGFIIISNATYKEIGLLTCEAT
 VNGHLYKTNLTHRQNTIIDVQISTPRPVKLLRGHTLVNCTATPLNTRVQMTWSYPDEKNKRASVRR
 RIDQSNSHANIFYSVLTIDKMQNKDKGLYTCRVRSGPSFKSVNTSVHIYDKAFITVKHRKQVLETVAGK
 RSYRLSMKVAFPSPEVVWLKDGLPATEKSARYLTRGYSLLIKDVTEEDAGNYTILLSIKQSNVFNKLT
 TLIVNVKPKIYKAVSSFPDPALYPLGSRQILTCTAYGIPQPTIKWFHPCNHNHSEARCDFCSNNEESF
 ILDADSNMGNRIESITQRMAIIIEGKNKLPANSSFMLPPTSFSSNYFHFLP

TRTRPLE - GFP Tag - V

Restriction Sites:

Sgfl-Mlul

Cloning Scheme:


ACCN: NM_001160031

ORF Size: 1623 bp

OTI Disclaimer: The molecular sequence of this clone aligns with the gene accession number as a point of reference only. However, individual transcript sequences of the same gene can differ through naturally occurring variations (e.g. polymorphisms), each with its own valid existence. This clone is substantially in agreement with the reference, but a complete review of all prevailing variants is recommended prior to use. [More info](#)

OTI Annotation: This clone was engineered to express the complete ORF with an expression tag. Expression varies depending on the nature of the gene.

Components: The ORF clone is ion-exchange column purified and shipped in a 2D barcoded Matrix tube containing 10ug of transfection-ready, dried plasmid DNA (reconstitute with 100 ul of water).

Reconstitution Method:

1. Centrifuge at 5,000xg for 5min.
2. Carefully open the tube and add 100ul of sterile water to dissolve the DNA.
3. Close the tube and incubate for 10 minutes at room temperature.
4. Briefly vortex the tube and then do a quick spin (less than 5000xg) to concentrate the liquid at the bottom.
5. Store the suspended plasmid at -20°C. The DNA is stable for at least one year from date of shipping when stored at -20°C.

RefSeq: [NM_001160031.1](#), [NP_001153503.1](#)

RefSeq Size: 1911 bp

RefSeq ORF: 1626 bp

Locus ID: 2321

UniProt ID: [P17948](#)

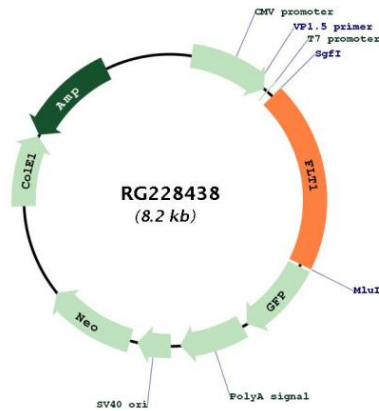
Cytogenetics: 13q12.3

Protein Families: Druggable Genome, Protein Kinase, Secreted Protein

Protein Pathways: Cytokine-cytokine receptor interaction, Endocytosis, Focal adhesion

Gene Summary: This gene encodes a member of the vascular endothelial growth factor receptor (VEGFR) family. VEGFR family members are receptor tyrosine kinases (RTKs) which contain an extracellular ligand-binding region with seven immunoglobulin (Ig)-like domains, a transmembrane segment, and a tyrosine kinase (TK) domain within the cytoplasmic domain. This protein binds to VEGFR-A, VEGFR-B and placental growth factor and plays an important role in angiogenesis and vasculogenesis. Expression of this receptor is found in vascular endothelial cells, placental trophoblast cells and peripheral blood monocytes. Multiple transcript variants encoding different isoforms have been found for this gene. Isoforms include a full-length transmembrane receptor isoform and shortened, soluble isoforms. The soluble isoforms are associated with the onset of pre-eclampsia.[provided by RefSeq, May 2009]

Product images:



Circular map for RG228438