

Product datasheet for **RG228419**

Calcitonin receptor (CALCR) (NM_001164737) Human Tagged ORF Clone

Product data:

Product Type:	Expression Plasmids
Product Name:	Calcitonin receptor (CALCR) (NM_001164737) Human Tagged ORF Clone
Tag:	TurboGFP
Symbol:	CALCR
Synonyms:	CRT; CT-R; CTR; CTR1
Mammalian Cell Selection:	Neomycin
Vector:	pCMV6-AC-GFP (PS100010)
E. coli Selection:	Ampicillin (100 ug/mL)



[View online »](#)

ORF Nucleotide Sequence:

>RG228419 representing NM_001164737
 Red=Cloning site Blue=ORF Green=Tags(s)

TTTTGTAATACGACTCACTATAGGGCGGCCGGAATTCGTCGACTGGATCCGGTACCGAGGAGATCTGCC
 GCC**CGCATCGCC**

ATGCAATTTTCTGGAGAGAAGATTAGTGGACAAGAGATCTTCAAAAATCAAAAATGAGGTTACATTTA
 CAAGCCGGTGCTTGGCACTGTTTCTTCTTAAATCACCCAACCCCAATCTTCCCTGCTTTTCAAATCA
 AACCTATCCAACAATAGAGCCCAAGCCATTTTCTTACGTCGTAGGACGAAAGAAGATGATGGATGCACAG
 TACAAATGCTATGACCGAATGCAGCAGTTACCCGCATACCAAGGAGAAGGTCCATATTGCAATCGCACCT
 GGGATGGATGGCTGTGCTGGGATGACACACCGGCTGGAGTATTGCCTATCAGTTCTGCCAGATTATTT
 TCCGGATTTTATCCATCAGAAAAGGTTACAAAATACTGTGATGAAAAAGGTGTTTGGTTTAAACATCCT
 GAAAAAATCGAACCTGGTCCAATACTATGTGCAATGCTTTCCTCCTGAGAAAATGAAGAATGCAT
 ATGTTCTGTACTATTTGGCTATTGTGGTCATTCTTTGCAATTTTACCCTAGTGATTTCCCTGGGGAT
 TTTCTGTGTTTTTCAGAAAATTGACAATACTTTTCTTTGAATTGAAAATATAGGAAGGCATTGAGCCTT
 GGCTGCCAAAGGTAACCTGCACAAGAATGTTTCTTACTTACATTCTGAATTCATGATTATCATCA
 TCCACCTGGTTGAAGTAGTACCCAATGGAGAGCTCGTGCGAAGGGACCCGGTGAGCTGCAAGATTTTGA
 TTTTTCCACCAGTACATGATGGCTGCAACTATTTCTGGATGCTCTGTGAAGGGATCTATCTTCATACA
 CTCATTGTCGTGGCTGTGTTTACTGAGAAGCAACGCTTGGGTTGTTATCTCTTGGGCTGGGGTTCC
 CGCTGGTGCAACCACTATCCATGCTATTACCAGGGCCGTGACTTCAATGACAACCTGCTGGCTGAGTGT
 GGAAACCAATTTGCTTTACATAATCCATGGACCTGTGATGGCGCACTTGGTCAATTTCTTCTTTTGG
 CTCAACATTGTCCGGTGCTTGTGACCAAAATGAGGGAACCCATGAGGGGGAATCCACATGTACTGA
 AGGCTGTGAAGGCCACCATGATCCTTGTGCCCTGCTGGGAATCCAGTTTGTGCTTTCCCTGGAGACC
 TTCCAACAAGATGCTTGGGAAGATATATGATTAGTGATGCACTCTCTGATTCATTTCCAGGGCTTCTT
 GTTGCACCATCTACTGCTTCTGCAACAATGAGGTCCAAACCACCGTGAAGCGCAATGGGCCAAATTC
 AAATTCAGTGAACAGCGTTGGGGAGGCGCCCTCCAACCGCTCTGCTCGCGCTGCAGCCGCTGCTGC
 GGAGGCTGGCGACATCCCAATTTACATCTGCCATCAGGAGCTGAGGAATGAACCAGCCAACAACCAAGGC
 GAGGAGAGTGCTGAGATCATCCCTTTGAATATCATAGAGCAAGAGTCATCTGCT

ACGCGTACGCGGCCGCTCGAG - GFP Tag - GTTTAA

Protein Sequence:

>RG228419 representing NM_001164737
 Red=Cloning site Green=Tags(s)

MQFSGEKISGQRDLQSKMRFTFTSRCLALFLLLNHPTPIILPAFVNQTYPTIEPKPFLYVVGRRKMMDAQ
 YKCYDRMQQLPAYQGEOPYCNRWDGWLWDDTPAGVLSYQFCPDYFPDFPSEKVTKYCDEKGVWFKHP
 ENNRTWSNYTMCNAFTPEKLNAYVLYLAIVGHSLSIFTLVISLGIFFVFRKLTIFPLNWKYRKALSL
 GCQRVTLHKNMFLTYILNSMIIIIHLVEVVPNGELVRRDPVSKILHFFHQYMMACNYFWMLCEGIYLHT
 LIVVAVFTEKQRLRWYLLGWGFPLVPTTIHAITRAVYFNDNCWLSVETHLLYIIHGPVMAALVNNFFFL
 LNIIVRVLVTKMRETHEAESMYLKAVKATMILVPLLGIQFVVPWRPSNKMLGKIYDYVMHSLIHFQGGF
 VATIYCFCNNEVQTTVKRQWAQFKIQWNQRWRRPSNRSARAAAAAAEAGDIPYIYICHQELRNEPANNQG
 EESAEIIPLNIIIEQESSA

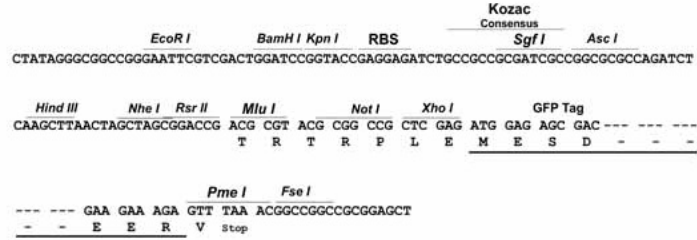
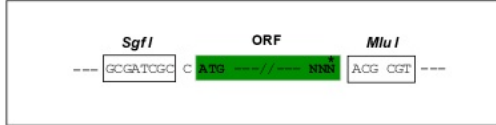
TRTRPLE - GFP Tag - V

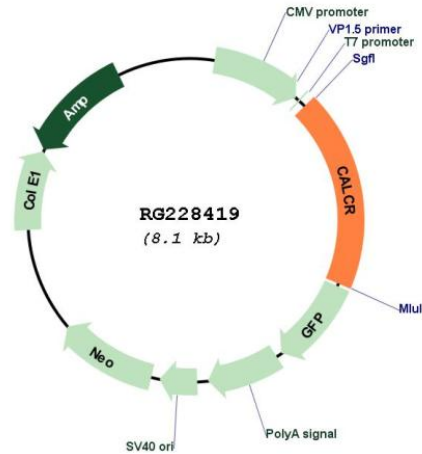
Restriction Sites:

Sgfl-Mlul

Cloning Scheme:

Cloning sites used for ORF Shutting:



Plasmid Map:


ACCN: NM_001164737

ORF Size: 1524 bp

OTI Disclaimer: The molecular sequence of this clone aligns with the gene accession number as a point of reference only. However, individual transcript sequences of the same gene can differ through naturally occurring variations (e.g. polymorphisms), each with its own valid existence. This clone is substantially in agreement with the reference, but a complete review of all prevailing variants is recommended prior to use. [More info](#)

OTI Annotation: This clone was engineered to express the complete ORF with an expression tag. Expression varies depending on the nature of the gene.

Components: The ORF clone is ion-exchange column purified and shipped in a 2D barcoded Matrix tube containing 10ug of transfection-ready, dried plasmid DNA (reconstitute with 100 ul of water).

Reconstitution Method:	<ol style="list-style-type: none">1. Centrifuge at 5,000xg for 5min.2. Carefully open the tube and add 100ul of sterile water to dissolve the DNA.3. Close the tube and incubate for 10 minutes at room temperature.4. Briefly vortex the tube and then do a quick spin (less than 5000xg) to concentrate the liquid at the bottom.5. Store the suspended plasmid at -20°C. The DNA is stable for at least one year from date of shipping when stored at -20°C.
RefSeq:	NM_001164737.1 , NP_001158209.1
RefSeq Size:	3696 bp
RefSeq ORF:	1473 bp
Locus ID:	799
UniProt ID:	P30988
Cytogenetics:	7q21.3
Protein Families:	Druggable Genome, GPCR, Transmembrane
Protein Pathways:	Neuroactive ligand-receptor interaction
Gene Summary:	This gene encodes a high affinity receptor for the peptide hormone calcitonin and belongs to a subfamily of seven transmembrane-spanning G protein-coupled receptors. The encoded protein is involved in maintaining calcium homeostasis and in regulating osteoclast-mediated bone resorption. Polymorphisms in this gene have been associated with variations in bone mineral density and onset of osteoporosis. Alternate splicing results in multiple transcript variants. [provided by RefSeq, Sep 2009]