

## Product datasheet for **RG228416**

### STAU2 (NM\_001164382) Human Tagged ORF Clone

#### Product data:

Product Type:	Expression Plasmids
Product Name:	STAU2 (NM_001164382) Human Tagged ORF Clone
Tag:	TurboGFP
Symbol:	STAU2
Synonyms:	39K2; 39K3
Mammalian Cell Selection:	Neomycin
Vector:	pCMV6-AC-GFP (PS100010)
E. coli Selection:	Ampicillin (100 ug/mL)



[View online »](#)

**ORF Nucleotide Sequence:**

>RG228416 representing NM\_001164382  
 Red=Cloning site Blue=ORF Green=Tags(s)

TTTTGTAATACGACTCACTATAGGGCGGCCGGAATTCGTCGACTGGATCCGGTACCGAGGAGATCTGCC  
 GCC**GCGATCGCC**

ATGAAAAGGGGAGAGCCTGCCATCTACAGGCCATTAGATCCAAAGCCATTCCTCAAATATAGAGCTAATT  
 ACAACTTTTCGGGCATGTACAATCAGAGGTATCATTGCCAGTGCCTAAGATCTTTTATGTTTCAGCTCAC  
 TGTAGGAAATAATGAATTTTTGGGGAAGGAAAGACTCGACAAGCTGCTAGACACAATGCTGCAATGAAA  
 GCCCTCCAAGCACTGCAGAATGAACCTATTCCAGAAAGATCTCCTCAGAAATGGTGAATCAGGAAAGGATG  
 TGGATGATGACAAAGATGCAAAATAGTCTGAGATCAGCTTAGTGTGTTGAAATGCTCTGAAGCGAAATAT  
 GCCTGTCAGTTTTGAGGTTATTAAGAAAGTGGACCACCACATATGAAAAGCTTTGTTACTCGAGTGTCA  
 GTAGGAGAGTTCTCTGCAGAAGGAGAAGGAAATAGCAAAAACTCTCAAGAAGCGCGCTGCGACCACCG  
 TCTTACAGGAGCTTAAAAAACTTCCACCTTCTCTGTGGTGGAAAAGCCAAAATTTTTTAAAAAACG  
 CCCTAAAACAATAGTAAAGGCCGACCAGAATATGGCCAAGGGATGAACCCTATTAGCCGCTGGCGCAA  
 ATTCAACAGGCCAAAAAGGAAAAGGAGCCGATTATGTTTTGCTTTCAGAAAGAGGAATGCCTCGACGTC  
 GAGAAATTTGTGATGCAGGTGAAGGTAGGCAATGAAGTTGCTACAGGAACAGGACCTAATAAAAAGATAGC  
 CAAAAAATGCTGCAGAAGCAATGCTGTTACAACCTGGTTATAAAGCATCCACTAATCTTCAGGATCAA  
 CTTGAGAAGACAGGGGAAAAACAAGGATGGAGTGGTCCAAAGCCTGGGTTTCTGAACCAACAAATAATA  
 CTCCAAAAGGAATTTTCATTTGTCTCCTGATGTTTATCAAGAGATGGAAGCCAGCCGCCACAAAGTAAT  
 CTCTGGCACTACTTAGGCTATTTGTCAACCAAGATATGAACCAACCTTCAAGCTCTTTCTTCAAGTATA  
 TCTCCACATCGAATAGTTCAGCTACAATTGCCAGGAACTCCTTATGAATGGAACATCTTCTACAGCTG  
 AAGCCATAGGTTTAAAAGGAAGTTCTCCTACTCCCCTTGTCTCCAGTACAACCTTCAAAAACAAGTGA  
 ATATTTAGCAAGGATTCAGGCTTTCAGGTTCACTACTGTGATAGACAAAAGTGGCAAAGAGTGTGTGACC  
 TGTCTGACATTAGCCCTGTGCAGATGACTTTCCATGCTATTGGAAGCTCCATTGAAGCCAGCCATGATC  
 AGGCAGCCTTAAGTGCCTTGAACAATTTTCTGAACAAGGACTGGATCCAATCGATGGAGCAATGAATAT  
 CGAAAAAGGTTCTCTTGAAAAACAAGCCAAGCATCTGAGAGAGAAAAGCGGACAATAACCAGGCACCCCGC  
 GGCTCCATCGCTCAGGACTGCAAGAAATCAAACCTCGGCCGTC

**ACGCGTACGCGGCCGCTCGAG** – GFP Tag – GTTTAA

**Protein Sequence:**

>RG228416 representing NM\_001164382  
 Red=Cloning site Green=Tags(s)

MKRGEPAIYRPLDPKPFNYRANYNFRGMYNQRYHCPVPKIFYVQLTVGNNEFFGEGKTRQARHNAAMK  
 ALQALQNEPIPERSPQNGESGKDVDDDKDANKSEISLVFEIALKRNMPVSFEVIKESGPPHMKSFVTRVS  
 VGEFSAEGEGNSKKL SKKRAATTVLQELKLLPPLPVVEKPKLFFKKRPKTIVKAGPEYQGGMNPI SRLAQ  
 IQQAKKEKEPDYVLLSERGMPPRRREFVMQVKGNEVATGTGPNKKIAKKNAAEAMLLQLGYKASTNLQDQ  
 LEKTGENKGWSGPKPGFPEPTNNTPKGILHLSPDVYQEMEASRHKVISGTTLGYLSPKDMNQPSSSFFSI  
 SPTSNSSATIARELLMNGTSSTAEIIGLKGSSPTPPCSPVQPSKQLEYLARIQGFQVHYCDRQSGKECVT  
 CLTLAPVQMTFHAIGSSIEASHDQAALSALKQFSEQGLPIDGAMNIEKGSLEKQAKHLREKADNNQAPP  
 GSIAQDCKKSNSAV

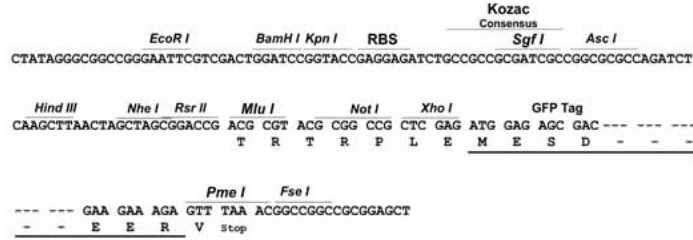
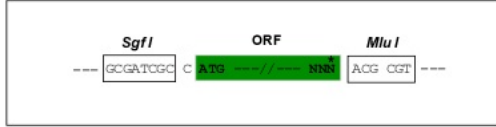
**TRTRPLE** – GFP Tag – V

**Restriction Sites:**

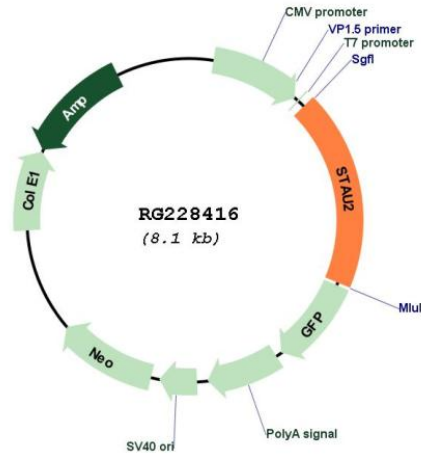
Sgfl-MluI

Cloning Scheme:

Cloning sites used for ORF Shutting:



## Plasmid Map:



ACCN: NM\_001164382

ORF Size: 1512 bp

OTI Disclaimer: The molecular sequence of this clone aligns with the gene accession number as a point of reference only. However, individual transcript sequences of the same gene can differ through naturally occurring variations (e.g. polymorphisms), each with its own valid existence. This clone is substantially in agreement with the reference, but a complete review of all prevailing variants is recommended prior to use. [More info](#)

OTI Annotation: This clone was engineered to express the complete ORF with an expression tag. Expression varies depending on the nature of the gene.

Components: The ORF clone is ion-exchange column purified and shipped in a 2D barcoded Matrix tube containing 10ug of transfection-ready, dried plasmid DNA (reconstitute with 100 ul of water).

**Reconstitution Method:**

1. Centrifuge at 5,000xg for 5min.
2. Carefully open the tube and add 100ul of sterile water to dissolve the DNA.
3. Close the tube and incubate for 10 minutes at room temperature.
4. Briefly vortex the tube and then do a quick spin (less than 5000xg) to concentrate the liquid at the bottom.
5. Store the suspended plasmid at -20°C. The DNA is stable for at least one year from date of shipping when stored at -20°C.

**RefSeq:** [NM\\_001164382.1](#), [NP\\_001157854.1](#)

**RefSeq Size:** 2888 bp

**RefSeq ORF:** 1515 bp

**Locus ID:** 27067

**UniProt ID:** [Q9NUL3](#)

**Cytogenetics:** 8q21.11

**Protein Families:** Transcription Factors

**Gene Summary:** Staufen homolog 2 is a member of the family of double-stranded RNA (dsRNA)-binding proteins involved in the transport and/or localization of mRNAs to different subcellular compartments and/or organelles. These proteins are characterized by the presence of multiple dsRNA-binding domains which are required to bind RNAs having double-stranded secondary structures. Staufen homolog 2 shares 48.5% and 59.9% similarity with drosophila and human staufen, respectively. The exact function of Staufen homolog 2 is not known, but since it contains 3 copies of conserved dsRNA binding domain, it could be involved in double-stranded RNA binding events. Several transcript variants encoding different isoforms have been found for this gene. [provided by RefSeq, Aug 2009]