

Product datasheet for **RG228349**

IGF2BP1 (NM_001160423) Human Tagged ORF Clone

Product data:

Product Type:	Expression Plasmids
Product Name:	IGF2BP1 (NM_001160423) Human Tagged ORF Clone
Tag:	TurboGFP
Symbol:	IGF2BP1
Synonyms:	CRD-BP; CRDBP; IMP-1; IMP1; VICKZ1; ZBP1
Mammalian Cell Selection:	Neomycin
Vector:	pCMV6-AC-GFP (PS100010)
E. coli Selection:	Ampicillin (100 ug/mL)
ORF Nucleotide Sequence:	>RG228349 representing NM_001160423 Red=Cloning site Blue=ORF Green=Tags(s)

TTTTGTAATACGACTCACTATAGGGCGGCCGGAATTCGTCGACTGGATCCGGTACCGAGGAGATCTGCC
GCC**CGATCGCC**

ATGAACAAGCTTTACATCGGCAACCTCAACGAGAGCGTGACCCCGGGACTTGGAGAAAGTGTTCGGG
AGCACAAGATCTCTACAGCGGCCAGTTCTTGGTCAAATCCGGCTACGCCTTCGTGGACTGCCCGGACGA
GCACTGGCGATGAAGGCCATCGAACTTTCTCCGGGAAAGTAGAATTACAAGGAAAACGCTTAGAGATT
GAACATTCGGTGCCAAAAAACAAGGAGCCGAAAATTCAAATCCGAAATATCCACCCAGCTCCGAT
GGGAAGTACTGGACAGCCTGCTGGCTCAGTATGGTACAGTAGAGAAGTGTGAGCAAGTGAACACCGAGAG
TGAGACGGCAGTGGTGAATGTCACCTATCCAACCGGGAGCAGACCAGGCAGGCTGACGAGGTTCCCTG
AAGATCCTGGCCATAATAACTTTGTAGGGCGTCTCATTGGCAAGGAAGGACGGAACCTGAAGAAGTAG
AGCAAGATACCGAGACAAAAATCACCATCTCTCGTTGCAAGACCTTACCCTTTACAACCCCTGAGAGGAC
CATCACTGTGAAGGGGGCCATCGAGAATTGTTGCAGGGCCGAGCAGGAAATAATGAAGAAAGTTCGGGAG
GCCTATGAGAATGATGTGGCTGCCATGAGCCTGCAGTCTCACCTGATCCCTGGCTGAACCTGGCTGCTG
TAGGCTTTTTCCAGCTTCATCCAGCGCAGTCCCGCCGCTCCAGCAGCGTTACTGGGGCTGCTCCCTA
TAGCTCCTTTATGCAGGCTCCCGAGCAGGAGATGGTGCAGGTGTTATCCCGCCAGGCAGTGGGCGCC
ATCATCGGCAAGAAGGGGACGACATCAACAGCTCTCCCGTTTGCCAGCGCTCCATCAAGATTGCAC
CACCCGAAACACCTGACTCCAAAGTTCGTATGGTTATCATCACTGGACCGCCAGAGGCCAATTCAGGC
TCAGGGAAGAATCTATGGCAAATCAAGGAGGAGAAGTCTTTGGTCCCAAGGAGAAAGTGAAGCTGGAG
ACCCACATACGTGTGCCAGCATCAGCAGCTGGCCGGTCAATTGGCAAAGGTGGAAAAACGGTGAACGAGT
TGCAGAATTTGACGGCAGCTGAGGTGGTAGTACCAAGAGACCAGACCCCTGATGAGAACGACCAGGTCAT
CGTGAAAATCATCGGACATTTCTATGCCAGTCAAGGAGTCCGAGACATCTGGCCAG
GTTAAGCAGCAGCATCAGAAGGGACAGAGTAACCAGGCCAGGCAGGAGGAAG

ACGCGTACGCGGCCGCTCGAG - GFP Tag - GTTTAA



[View online »](#)

Protein Sequence: >RG228349 representing NM_001160423
 Red=Cloning site Green=Tags(s)

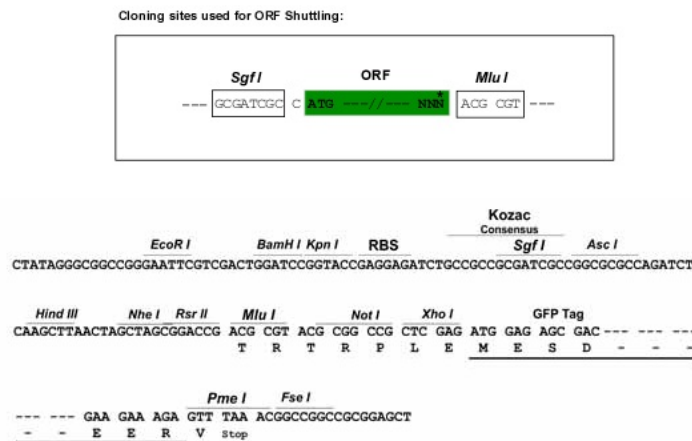
MNKL YIGNLNESVTPADLEKVF AEHKISYSQFLVKSGYAFVDCPDEHWAMKAIETFSGKVELQGKRLEI
 EHSVPKQRSRKIQIRNIPPQLRWEVLDSLLAQYGTVENCEQVNTSE TAVVNVYTSNREQTRQADEVPL
 KILAHNNFVGR LIGKEGRNLKKVEQDTE TKITISSLQDL TLYNPERTITVKGAIENCCRAEQEIMKKVRE
 AYENDVAAMSLQSHLIPGLNLA AVGLFPASSAVPPPPSSVTGAAPYSSFMQAPEQEMVQVFIPAQAVGA
 IIGKKGQHIKQLSRFASASIKIAPPETPDSKVRMVIITGPPEAQFKAQGR IYGLKKEENFFGPKKEEVKLE
 THIRVPA SAAGRVIKGGKTVNELQNL TAAEVVPRDQTPDENDQVIVKIIGHFYASQMAQRKIRDILAQ
 VKQHQKQGSNQAQARRK

TRTRPLE - GFP Tag - V

Chromatograms: https://cdn.origene.com/chromatograms/ja3503_b06.zip

Restriction Sites: SgfI-MluI

Cloning Scheme:



ACCN: NM_001160423

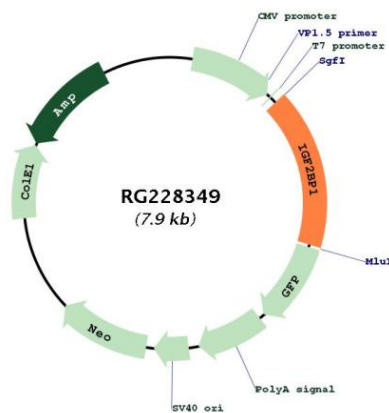
ORF Size: 1314 bp

OTI Disclaimer: Due to the inherent nature of this plasmid, standard methods to replicate additional amounts of DNA in E. coli are highly likely to result in mutations and/or rearrangements. Therefore, OriGene does not guarantee the capability to replicate this plasmid DNA. Additional amounts of DNA can be purchased from OriGene with batch-specific, full-sequence verification at a reduced cost. Please contact our customer care team at custsupport@origene.com or by calling 301.340.3188 option 3 for pricing and delivery.

The molecular sequence of this clone aligns with the gene accession number as a point of reference only. However, individual transcript sequences of the same gene can differ through naturally occurring variations (e.g. polymorphisms), each with its own valid existence. This clone is substantially in agreement with the reference, but a complete review of all prevailing variants is recommended prior to use. [More info](#)

OTI Annotation:	This clone was engineered to express the complete ORF with an expression tag. Expression varies depending on the nature of the gene.
Components:	The ORF clone is ion-exchange column purified and shipped in a 2D barcoded Matrix tube containing 10ug of transfection-ready, dried plasmid DNA (reconstitute with 100 ul of water).
Reconstitution Method:	<ol style="list-style-type: none"> 1. Centrifuge at 5,000xg for 5min. 2. Carefully open the tube and add 100ul of sterile water to dissolve the DNA. 3. Close the tube and incubate for 10 minutes at room temperature. 4. Briefly vortex the tube and then do a quick spin (less than 5000xg) to concentrate the liquid at the bottom. 5. Store the suspended plasmid at -20°C. The DNA is stable for at least one year from date of shipping when stored at -20°C.
RefSeq:	<u>NM_001160423.2</u>
RefSeq Size:	8352 bp
RefSeq ORF:	1317 bp
Locus ID:	10642
UniProt ID:	<u>Q9NZI8</u>
Cytogenetics:	17q21.32
Gene Summary:	This gene encodes a member of the insulin-like growth factor 2 mRNA-binding protein family. The protein encoded by this gene contains four K homology domains and two RNA recognition motifs. It functions by binding to the mRNAs of certain genes, including insulin-like growth factor 2, beta-actin and beta-transducin repeat-containing protein, and regulating their translation. Two transcript variants encoding different isoforms have been found for this gene. [provided by RefSeq, May 2009]

Product images:



Circular map for RG228349