

Product datasheet for **RG228346**

ODR4 (C1orf27) (NM_001164245) Human Tagged ORF Clone

Product data:

Product Type:	Expression Plasmids
Product Name:	ODR4 (C1orf27) (NM_001164245) Human Tagged ORF Clone
Tag:	TurboGFP
Symbol:	ODR4
Synonyms:	C1orf27; odr-4; TTG1
Mammalian Cell Selection:	Neomycin
Vector:	pCMV6-AC-GFP (PS100010)
E. coli Selection:	Ampicillin (100 ug/mL)
ORF Nucleotide Sequence:	>RG228346 representing NM_001164245 Red=Cloning site Blue=ORF Green=Tags(s)

TTTTGTAATACGACTCACTATAGGGCGGCCGGAATTCGTCGACTGGATCCGGTACCGAGGAGATCTGCC
GCC**CGATCGCC**

ATGGGAAGAACCTACATTGTAGAAGAGACTGTTGGCCAGTATCTTTCAAACATAAATCTCCAAGGAAAGG
CTTTTGTCTCTGGCCTTTAATAGGACAGTGTCGCACAAAAGGATTATGTGATTCTTGCCACTAGAAC
GCCACCCAAAGAGGAGCAAAGTGAGAACCTCAAACATCCCAAAGCTAAGTTGGATAAATTGGATGAAGAA
TGGGCCACAGAACATGCCTGCCAGGTATCCAGAATGCTACCAGGGGGACTTTTAGTCTTGAGTATTTA
TTATTACTACTTTAGAAGTGGCAATGATTTTCAAATGCCCTGCGTAGACTAATGTTTGTGTGGAAAA
GTCTATAAATAGAAAGAGATTGTGGAATTCACAGAGGAGGAAGTCTCAGAACGAGTGACACTTCACATT
TGTGCTTCTACAAAAAATATTTTGTGCAACTTATGATATCCATGATCCAAAGAGTTTCAGCAAGACCAG
CAGATTGGAAGTATCAAAGTGGATTATCATCCTCATGGCTTTCTTTAGAGTGTACAGTTCACATTAATAT
TCACATCCCACCTTCTGCTACTTCTGTCAGCTATACTCTGGAGAAAAATACAAAGATGGACTTACACGC
TGGGCCAAGGAAATAGAAAATGGTGTATTTGATTAATGGACAAGTTAAAGATGAAGATTGTGACCTAT
TAGAAGGACAGCTCCTGAATTCAGACCACAGATCCACAGCCACAGTCCAGATATGTAGCGGTTCTGTAAA
CCTTAAGGGTGTGTGAAATGCAGAGCTTATATCCACAGCAGTAAACCCAAAGTTAAAGATGCTGTGCAG
GCAGTAAAGAGGATATATTGAACACAGTTGCTGATCGTTGTGAAATGCTATTTGAGGATCTGCTTTTGA
ATGAAATTCAGAAAAAAGATTCTGAAAAAGAGTTCCACGTCCTCCCTTATCGAGTCTTTGTTCCCT
TCCTGGATCCACTGTAATGTTGTGTGATTATAAATTTGACGATGAGTCAGCTGAAGAAATCAGGGACCAT
TTTATGGAGATGTTGGATCACACAATTCAAATAGAAAGTTTGGAAATTCAGAGGAAACAAACACAGCTT
GTATGAGTTCTTCTATGAATAGTCAAGCTTCATTGGACAACACAGATGATGAACAACCAAAACAACCAAT
TAAACTACAATGTTATTGAAAATTCAGCAAAACATAGGTGTGATTGCAGCATTTACAGTTGCAGTCCTT
GCTGCGGGTATCTCTTTCACTTTCAGTGAT

ACGCGTACGCGGCCGCTCGAG - GFP Tag - GTTTAA



[View online »](#)

Protein Sequence: >RG228346 representing NM_001164245
Red=Cloning site Green=Tags(s)

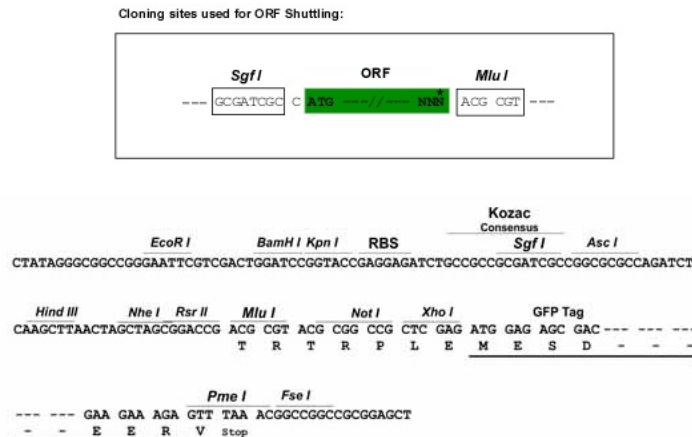
MGRTYIVEETVGQYLSNINLQGKAFVSGLLIGQCSSQKDYVILATRTPPKEEQSENLKHPKAKLDNLDEE
 WATEHACQVSRMLPGLLLVGVFIITTTLELANDFQNALRRLMFAVEKSINRKRLWNFTEEEVSERVTLHI
 CASTKKIFCRTYDIHDPKSSARPADWKYQSGLSSSWLSLECTVHINIHIPLSATSVSYTLEKNTKNGLTR
 WAKEIENGVYILINGQVKDEDCDLEGLLNSDHRSTATVQICSGSVNLKGAVKCRAYIHSSKPKVKDAVQ
 AVKRDILNTVADRCEMLFEDLLLNEIPEKKDSEKEFHVLPYRVFVPLPGSTVMLCDYKFDDESAAEIRDH
 FMEMLDHTIQIEDLEIAEETNTACMSSMNSQASLDNTDDEQPKQPIKTTMLLKIQQNIGVIAAFTVAVL
 AAGISFHYFSD

TRTRPLE - GFP Tag - V

Restriction Sites:

SgfI-MluI

Cloning Scheme:



ACCN: NM_001164245

ORF Size: 1293 bp

OTI Disclaimer: The molecular sequence of this clone aligns with the gene accession number as a point of reference only. However, individual transcript sequences of the same gene can differ through naturally occurring variations (e.g. polymorphisms), each with its own valid existence. This clone is substantially in agreement with the reference, but a complete review of all prevailing variants is recommended prior to use. [More info](#)

OTI Annotation: This clone was engineered to express the complete ORF with an expression tag. Expression varies depending on the nature of the gene.

Components: The ORF clone is ion-exchange column purified and shipped in a 2D barcoded Matrix tube containing 10ug of transfection-ready, dried plasmid DNA (reconstitute with 100 ul of water).

Reconstitution Method:

1. Centrifuge at 5,000xg for 5min.
2. Carefully open the tube and add 100ul of sterile water to dissolve the DNA.
3. Close the tube and incubate for 10 minutes at room temperature.
4. Briefly vortex the tube and then do a quick spin (less than 5000xg) to concentrate the liquid at the bottom.
5. Store the suspended plasmid at -20°C. The DNA is stable for at least one year from date of shipping when stored at -20°C.

RefSeq: [NM_001164245.1](#), [NP_001157717.1](#)

RefSeq Size: 3857 bp

RefSeq ORF: 1296 bp

Locus ID: 54953

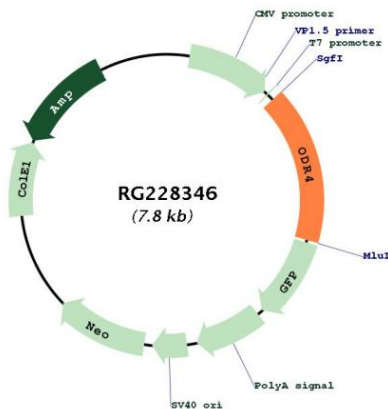
UniProt ID: [Q5SWX8](#)

Cytogenetics: 1q31.1

Protein Families: Transmembrane

Gene Summary: May play a role in the trafficking of a subset of G-protein coupled receptors.
[UniProtKB/Swiss-Prot Function]

Product images:



Circular map for RG228346