

## Product datasheet for **RG228240**

### **MCTP2 (NM\_001159644) Human Tagged ORF Clone**

#### Product data:

<b>Product Type:</b>	Expression Plasmids
<b>Tag:</b>	TurboGFP
<b>Symbol:</b>	MCTP2
<b>Mammalian Cell</b>	Neomycin
<b>Selection:</b>	
<b>Vector:</b>	pCMV6-AC-GFP (PS100010)
<b>E. coli Selection:</b>	Ampicillin (100 ug/mL)

**ORF Nucleotide Sequence:** >RG228240 representing NM\_001159644  
Red=Cloning site Blue=ORF Green=Tags(s)

TTTTGTAATACGACTCACTATAGGGCGGCCGGAATTCGTCGACTGGATCCGGTACCGAGGAGATCTGCC  
GCC**CGCATCGCC**

ATGGGCATTTTGGACATTGAAGTGTGGGAAAGGACAACAAAAGCATGAGGAACGTCTGGGCACGTGTA  
AAGTGGATATCTCGGCACTCCCTCTGAAGCAAGCCAAGTGCCTGGAGCTGCCACTGGACAGCTGTCTGGG  
GGCTCTCCTTATGTTGGTCACACTTACACCCTGTGCGGGGGTCTCCGTCTCTGATCTGTGTCTGCCCC  
TTAGCAGACCTCAGCGAAAGAAAGCAGATTACCCAGCGATATTGCTTACAGAACTCCCTGAAAGATGTGA  
AAGACGTCGGCATTCTACAAGTGAAGGTTTTAAAGGCAGCAGATCTCTTAGCGGCAGATTTCTCAGGGAA  
GAGTGACCCATTTGCTTGTGGAGTTAGGCAATGACCGACTTCAGACGCATACCGTCTACAAAAACCTC  
AACCCCTGAATGGAACAAAGTTTTTACATTTCCCATTAAGATATCCATGATGTTTTGGAAGTGACAGTGT  
TTGATGAAGATGGAGATAAACCCCAAGATTTTCTTGAAAAGTTGCCATTCCCTTGCTGTCCATTAGAGA  
TGGACAACCGAATTGTTATGTACTAAAGAATAAAGATTTAGAACAAGCTTTTAAAGGAGTTATTTACTTA  
GAGATGGACCTTATATATAATCCGGTGAAAGCAAGTATTAGGACTTTTACTCCCGGGAAAAGCGCTTTG  
TTGAAGACAGCCGCAAGCTGTCCAAAAAGATCTTATCAAGAGATGTGGACCGTGTGAAAAGAATCACTAT  
GGCAATATGGAATACAATGCAGTTCCTTAAAGCTGCTTCCAGTGGGAATCCACATTAAGAAGTACAATA  
GCATTCGCGCACCGCAAGAGGAACCCCTGTCTATGAAATGTACCTTTTCTCTGGTGACATTGGCC  
CATCCTTA

**ACGCGTACGCGGCCGCTCGAG** - GFP Tag - GTTTAA



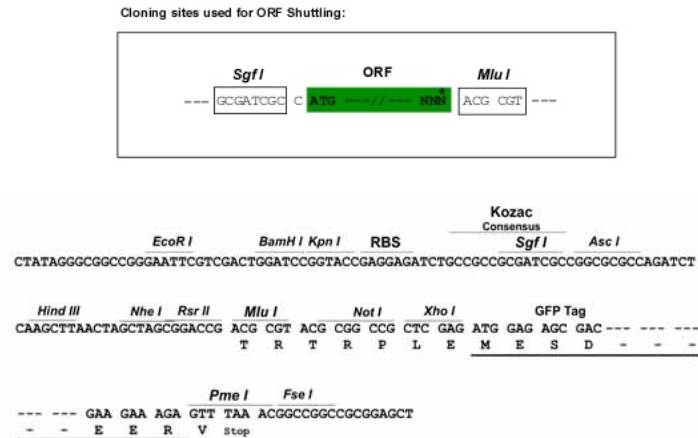
**Protein Sequence:** >RG228240 representing NM\_001159644  
 Red=Cloning site Green=Tags(s)

MGILDIEVWGKDNKKHEERLGTCKVDISALPLKQANCLLEPLDSCLGALLMLVTLTPCAGVSVDLCVCP  
 LADLSERKQITQRYCLQNSLKDVKDVGILQVKVLAADLLAADFSGKSDPFCLLELGNDRLQTHTVYKNL  
 NPEWNKVFTFPIKDIHDVLETVFDEGDGKPPDFLGKVAIPLL SIRDGQPNCYVLKNKDLEQAFKGVYIL  
 EMDLIYNPVKASIRFTTPREKRFVEDSRKLSKKILSRDVRVKRITMAIWNTMQFLKSCFQWESTLRSTI  
 AFAHRKEEPPLSMKCTLFSGDIGPSL

TRTRPLE - GFP Tag - V

**Restriction Sites:** SgfI-MluI

**Cloning Scheme:**



**ACCN:** NM\_001159644

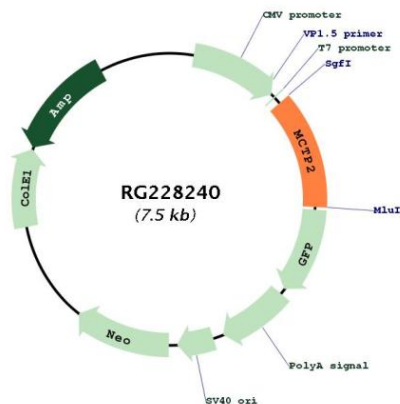
**ORF Size:** 918 bp

**OTI Disclaimer:** Due to the inherent nature of this plasmid, standard methods to replicate additional amounts of DNA in E. coli are highly likely to result in mutations and/or rearrangements. Therefore, OriGene does not guarantee the capability to replicate this plasmid DNA. Additional amounts of DNA can be purchased from OriGene with batch-specific, full-sequence verification at a reduced cost. Please contact our customer care team at [custsupport@origene.com](mailto:custsupport@origene.com) or by calling 301.340.3188 option 3 for pricing and delivery.

The molecular sequence of this clone aligns with the gene accession number as a point of reference only. However, individual transcript sequences of the same gene can differ through naturally occurring variations (e.g. polymorphisms), each with its own valid existence. This clone is substantially in agreement with the reference, but a complete review of all prevailing variants is recommended prior to use. [More info](#)

<b>OTI Annotation:</b>	This clone was engineered to express the complete ORF with an expression tag. Expression varies depending on the nature of the gene.
<b>Components:</b>	The ORF clone is ion-exchange column purified and shipped in a 2D barcoded Matrix tube containing 10ug of transfection-ready, dried plasmid DNA (reconstitute with 100 ul of water).
<b>Reconstitution Method:</b>	<ol style="list-style-type: none"> <li>1. Centrifuge at 5,000xg for 5min.</li> <li>2. Carefully open the tube and add 100ul of sterile water to dissolve the DNA.</li> <li>3. Close the tube and incubate for 10 minutes at room temperature.</li> <li>4. Briefly vortex the tube and then do a quick spin (less than 5000xg) to concentrate the liquid at the bottom.</li> <li>5. Store the suspended plasmid at -20°C. The DNA is stable for at least one year from date of shipping when stored at -20°C.</li> </ol>
<b>Note:</b>	Plasmids are not sterile. For experiments where strict sterility is required, filtration with 0.22um filter is required.
<b>RefSeq:</b>	<u><a href="#">NM_001159644.2</a></u>
<b>RefSeq Size:</b>	2009 bp
<b>RefSeq ORF:</b>	921 bp
<b>Locus ID:</b>	55784
<b>UniProt ID:</b>	<u><a href="#">Q6DN12</a></u>
<b>Cytogenetics:</b>	15q26.2
<b>Protein Families:</b>	Transmembrane
<b>Gene Summary:</b>	Might play a role in the development of cardiac outflow tract.[UniProtKB/Swiss-Prot Function]

Product images:



Circular map for RG228240