

Product datasheet for **RG228202**

PEDS1 (NM_001162505) Human Tagged ORF Clone

Product data:

Product Type:	Expression Plasmids
Tag:	TurboGFP
Symbol:	PEDS1
Synonyms:	CarF; KUA; TMEM189
Mammalian Cell	Neomycin
Selection:	
Vector:	pCMV6-AC-GFP (PS100010)
E. coli Selection:	Ampicillin (100 ug/mL)

ORF Nucleotide Sequence: >RG228202 representing NM_001162505
Red=Cloning site Blue=ORF Green=Tags(s)

TTTTGTAATACGACTCACTATAGGGCGGCCGGAATTCGTCGACTGGATCCGGTACCGAGGAGATCTGCC
GCC**GCGATCGCC**

ATGGCGGGCGCCGAGGACTGGCCGGGCCAGCAGCTGGAGCTGGACGAGGACGAGGCGTCTTGTTGCCGCT
GGGGCGCGCAGCACGCCGGGGCCCGAGCTGGCTGCGCTCTACTCGCCAGGCAAGCGCCTCCAGGAGTG
GTGCTCTGTGATCCTGTGCTTCAGCCTCATCGCCACAACCTGGTCCATCTCCTGCTGCTGGCCCGCTGG
GAGGACACACCCCTCGTCATACTCGGTGTTGTTGCAGGGGCTCTCATTGCTGACTTCTGTCTGGCCTGG
TACACTGGGGTGCTGACACATGGGGCTCTGTGGAGCTGCCATTGCTTTTCATCCGACCCCTCCGGGAGCA
CCACATTGACCCGACAGTATCACACGGCAGGACTTCATCGAGACCAACGGGGACAACCTGCCTGGTGACA
CTGCTGCCGCTGCTAAACATGGCCTACAAGTTCGACCCACAGCCCTGAAGCCCTGGAGCAGCTATACC
CCTGGGAGTGCTTCGTCTTCTGCCTGATCATCTTCGGCACCTTCACCAACCAGATCCACAAGTGGTCGCA
CACGTACTTTGGGCTGCCACGCTGGGTACCCCTCCTGCAGGACTGGCATGTCATCCTGCCACGTAAACAC
CATCGCATCCACCAGCTCTACCCACGAGACCTACTTCTGCATCACCACAGGCTGGCTCAACTACCCTC
TGGAGAAGATAGGCTTCTGGCGACGCTGGAGGACCTATCCAGGGCCTGACGGGCGAGAAGCCTCGGGC
AGATGACATGAAATGGGCCGAGAAGATCAA

ACGCGTACGCGGCCGCTCGAG - GFP Tag - GTTTAA



Protein Sequence:

>RG228202 representing NM_001162505

Red=Cloning site Green=Tags(s)

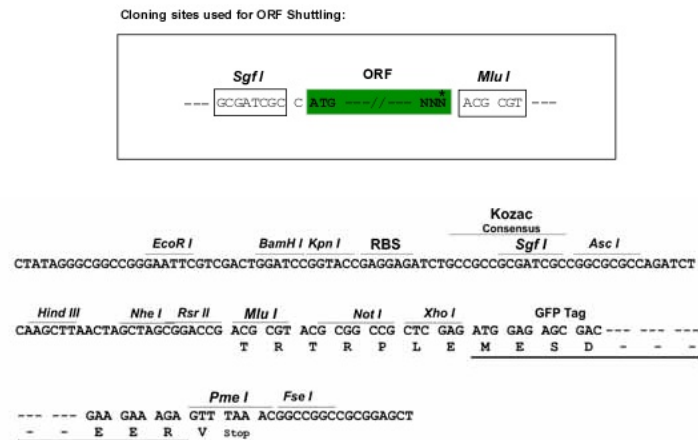
MAGAEDWPGQQLLEDEDEASCCRWGAQHAGARELAALYSPGKRLQEWCSVILCFSLIAHNLVHLLLLARW
EDTPLVILGVVAGALIADFLSGLVHWGADTWGSVELPIAFIRPFREHHIDPTAITRHDFIETNGDNCLVT
LLPLLNMAYKFRTHSPEALEQLYPWECFVFLIIFGTFTNQIHKWSHTYFGLPRWVTLQDWHVILPRKH
HRIHHVSPHETYFCITTGWLNYPLEKIGFWRRLDLIQLTGKPRADDMKWAQKIK

TRTRPLE - GFP Tag - V

Restriction Sites:

SgfI-MluI

Cloning Scheme:



ACCN:

NM_001162505

ORF Size:

801 bp

OTI Disclaimer:

The molecular sequence of this clone aligns with the gene accession number as a point of reference only. However, individual transcript sequences of the same gene can differ through naturally occurring variations (e.g. polymorphisms), each with its own valid existence. This clone is substantially in agreement with the reference, but a complete review of all prevailing variants is recommended prior to use. [More info](#)

OTI Annotation:

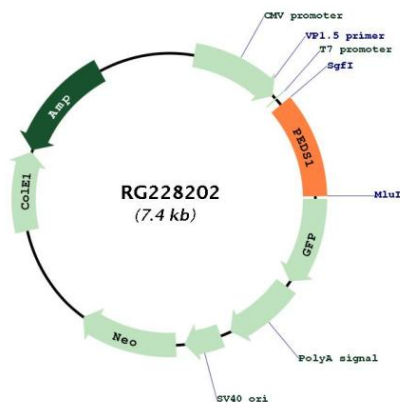
This clone was engineered to express the complete ORF with an expression tag. Expression varies depending on the nature of the gene.

Components:

The ORF clone is ion-exchange column purified and shipped in a 2D barcoded Matrix tube containing 10ug of transfection-ready, dried plasmid DNA (reconstitute with 100 ul of water).

Reconstitution Method:	<ol style="list-style-type: none"> 1. Centrifuge at 5,000xg for 5min. 2. Carefully open the tube and add 100ul of sterile water to dissolve the DNA. 3. Close the tube and incubate for 10 minutes at room temperature. 4. Briefly vortex the tube and then do a quick spin (less than 5000xg) to concentrate the liquid at the bottom. 5. Store the suspended plasmid at -20°C. The DNA is stable for at least one year from date of shipping when stored at -20°C.
Note:	Plasmids are not sterile. For experiments where strict sterility is required, filtration with 0.22um filter is required.
RefSeq:	<u>NM_001162505.1, NP_001155977.1</u>
RefSeq Size:	2286 bp
RefSeq ORF:	804 bp
Locus ID:	387521
UniProt ID:	<u>A5PLL7</u>
Cytogenetics:	20q13.13
Protein Families:	Transmembrane
Gene Summary:	Co-transcription of this gene and the neighboring downstream gene (ubiquitin-conjugating enzyme E2 variant 1) generates a rare read-through transcript, which encodes a fusion protein comprised of sequence sharing identity with each individual gene product. The protein encoded by this individual gene lacks a UEV1 domain but includes three transmembrane regions. Alternative splicing results in multiple transcript variants. [provided by RefSeq, Jun 2009]

Product images:



Circular map for RG228202