

Product datasheet for **RG228200**

TLCD2 (NM_001164407) Human Tagged ORF Clone

Product data:

Product Type: Expression Plasmids
 Product Name: TLCD2 (NM_001164407) Human Tagged ORF Clone
 Tag: TurboGFP
 Symbol: TLCD2
 Mammalian Cell Selection: Neomycin
 Vector: pCMV6-AC-GFP (PS100010)
 E. coli Selection: Ampicillin (100 ug/mL)
 ORF Nucleotide Sequence: >RG228200 representing NM_001164407
 Red=Cloning site Blue=ORF Green=Tags(s)

TTTTGTAATACGACTCACTATAGGGCGGCCGGAATTCGTCGACTGGATCCGGTACCGAGGAGATCTGCC
 GCC**CGATCGCC**

ATGGCGCCACGGGGCTCCTGGTGGCCGGCGCCTCCTTCCTCGCGTTCGGGGGCTGCACTGGGGGTTGC
 GGCGGCTGCCACGCGGAATCGGCCGCTCGGGACCGCTGGCAGTGGTGGAACTCTGCGTCTCCCTGGC
 GCACAGCTGCTCTCGGGGACCGGGCGCTGCTCGGCCGTCACTGTACCCTCAGATGGCCGCCGACCCC
 ATCCATGGCCACCGCGCTGGGCTCTGGTGTGGTGGCTGTGTCTGTGGGTTACTTCTGGCAGACGGAG
 CTGACCTGCTGTGAACAGACCTTGGGCAAGACCTGGGATCTTCTCTGTCATCATTGGTGGTGGTGAG
 CTGCCTCAGCACCGTGTCTGTCTGGCCACTAGTGGGCTTCTCCATGGTGTCTCTGCTCCTGGAAGT
 AACTCTGCCTGCTTGACCTGCGGAAGCTGCTGTTGCTTTCTCGCCAGGCCCATCCCTGGCCTTACGCG
 TGACCAGCTGGGCTCCTTGGCCACCTTGGCCCTTCCGCTGGTCCCCTGGGGTGGATGAGTCTGTG
 GCTGTTCCGGCAGCACCACAGTTCTTCTGCTGCTGGTCAACCTGGGTGGAATTGGGCTGGTCACTGTG
 GGCATCATGAGCATCATATTGGGATCCGATTCTGGTCAATGATGTCTACAGTCTCGACCCCATCCAC
 CCAGCCCTGGCCATGAGAAAACCAGGGGACCAGGACACGTCGTGACAATGGACCTGTACCAGCAACAG
 TTCGACTCTCAGCTGAAAGAC

ACGCGTACGCGGCCGCTCGAG - GFP Tag - GTTTAA



[View online »](#)

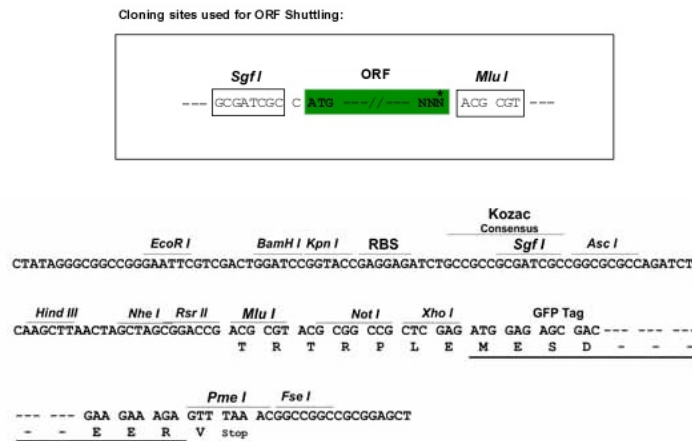
Protein Sequence: >RG228200 representing NM_001164407
Red=Cloning site Green=Tags(s)

MAPTGLLVAGASFLAFRGLHWGLRRLPTPESAARDRWQWWNLCVSLAHSLLSGTGALLGLSLYPQMAADP
 IHGHPRWALVLVAVSVGYFLADGADLLWNQTLGKTWDDLCHHLVVVVSCLSTAVLSGHYVGFMSVSLLEL
 NSACLHLRKLKLLSRQAPSLAFSVTSWASLATLALFRLVPLGWMSLWLFQHHQVPLALVTLGGIGLVTV
 GIMSIIILGIRILVNDVLQSRPHPPSPGHEKTRGTRTRRDNGPVTNSNSTLSLKD

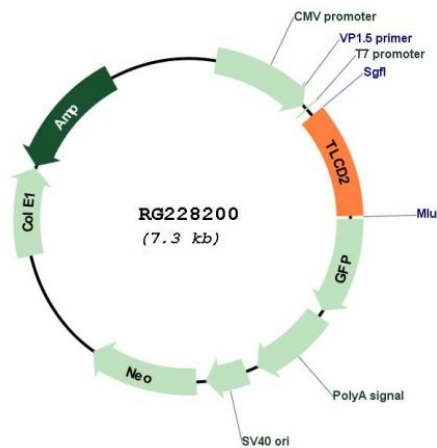
TRTRPLE - GFP Tag - V

Restriction Sites: SgfI-MluI

Cloning Scheme:



Plasmid Map:



ACCN: NM_001164407

ORF Size: 792 bp

| | |
|-------------------------------|---|
| OTI Disclaimer: | The molecular sequence of this clone aligns with the gene accession number as a point of reference only. However, individual transcript sequences of the same gene can differ through naturally occurring variations (e.g. polymorphisms), each with its own valid existence. This clone is substantially in agreement with the reference, but a complete review of all prevailing variants is recommended prior to use. More info |
| OTI Annotation: | This clone was engineered to express the complete ORF with an expression tag. Expression varies depending on the nature of the gene. |
| Components: | The ORF clone is ion-exchange column purified and shipped in a 2D barcoded Matrix tube containing 10ug of transfection-ready, dried plasmid DNA (reconstitute with 100 ul of water). |
| Reconstitution Method: | <ol style="list-style-type: none">1. Centrifuge at 5,000xg for 5min.2. Carefully open the tube and add 100ul of sterile water to dissolve the DNA.3. Close the tube and incubate for 10 minutes at room temperature.4. Briefly vortex the tube and then do a quick spin (less than 5000xg) to concentrate the liquid at the bottom.5. Store the suspended plasmid at -20°C. The DNA is stable for at least one year from date of shipping when stored at -20°C. |
| RefSeq: | NM_001164407.2 |
| RefSeq Size: | 5901 bp |
| RefSeq ORF: | 795 bp |
| Locus ID: | 727910 |
| UniProt ID: | A6NGC4 |
| Cytogenetics: | 17p13.3 |
| Gene Summary: | Regulates the composition and fluidity of the plasma membrane (PubMed:30509349). Inhibits the incorporation of membrane-fluidizing phospholipids containing omega-3 long-chain polyunsaturated fatty acids (LCPUFA) and thereby promotes membrane rigidity (PubMed:30509349). Does not appear to have any effect on LCPUFA synthesis (PubMed:30509349).[UniProtKB/Swiss-Prot Function] |