

Product datasheet for **RG228190**

TRPT1 (NM_001160389) Human Tagged ORF Clone

Product data:

Product Type: Expression Plasmids
Product Name: TRPT1 (NM_001160389) Human Tagged ORF Clone
Tag: TurboGFP
Symbol: TRPT1
Mammalian Cell Selection: Neomycin
Vector: pCMV6-AC-GFP (PS100010)
E. coli Selection: Ampicillin (100 ug/mL)
ORF Nucleotide Sequence: >RG228190 representing NM_001160389
 Red=Cloning site Blue=ORF Green=Tags(s)

TTTTGTAATACGACTCACTATAGGGCGGCCGGAATTCGTCGACTGGATCCGGTACCGAGGAGATCTGCC
 GCC**CGATCGCC**

ATGAACTTCTCTGGAGGAGGGAGGCAGGAAGCAGCAGGGTCCAGGGGTAGAAGGGCTCCCAGACCCCGAG
 AACAGGACCGAGACGTGCAGCTGTCCAAGGCTCTGTCCTATGCCCTGCGCCATGGGGCCTTGAAGCTGGG
 GCTTCCCATGGGAGCTGATGGCTTCGTGCCCTGGGCACCCTCCTGCAGTTGCCCCAGTTCGCGGCTTC
 TCTGCTGAAGATGTGCAGCGCGTGGTGGACACCAATAGGAAGCAGCGGTTCCGCCATGAGGAGGATC
 CCAGACTGGCCTTCTCATCCGGGCCAACCAGGGCCATTCCTGCAGGTCGGGGTACCTAAGTTGGAGCT
 GATGCCCTGGAGACACCGCAGGCCCTGCCCCGATGCTAGTCCATGGTACATTCTGGAAGCACTGGCCA
 TCCATCTACTCAAAGGCTGTCTGCCAGGGAAGGACGACATTACCTGGCCCCAGGACTGCCTGGAG
 ACCCCGGTATCATCAGTGGCATGCGGTCCATTGTGAAATAGCTGTGTTTCATCGATGGACCCCTGGCTCT
 GGCAGATGGAATACCCTTCTCCGCTCTGCCAATGGGGTGATTCTGACTCCAGGGAATACTGATGGCTTC
 CTCCTTCCCAAGTACTTCAAGGAGGCCCTGCAGCTACGCCCTACCCGAAAGCCCCTTTCTTGGCTGGTG
 ATGAAGAGACAGAGTGTGAGTAGCCCCAAGCACAGCTCCAGAGAAAGGAGGAGGATCCAACA

ACGCGTACGCGGCCGCTCGAG - GFP Tag - GTTTAA

Protein Sequence: >RG228190 representing NM_001160389
 Red=Cloning site Green=Tags(s)

MNFSGGGRQEAAGSRGRRAPRPREQDRDVLQSKALSYALRHGALKLGLPMGADGFVPLGTLQLPQFRGF
 SAEDVQRVVDNRKQRFALQLGDPSTGLLIRANQGHSLQGVPKLELMPLETPQALPPMLVHGTFWKHWP
 SILLKGLSCQGRTHIHLAPGLPGDPIISGMRSHCEIAVFDGPLALADGIPFFRSANGVILTPGNTDGF
 LLPKYFKEALQLRPTRKPLSLAGDEETECQSSPKHSSRERRRIQQ

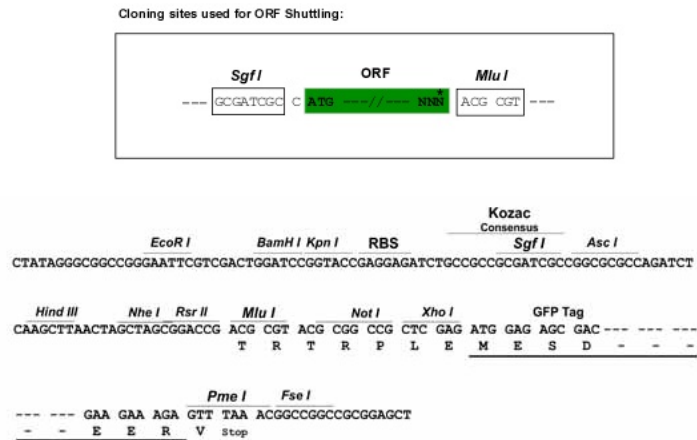
TRTRPLE - GFP Tag - V



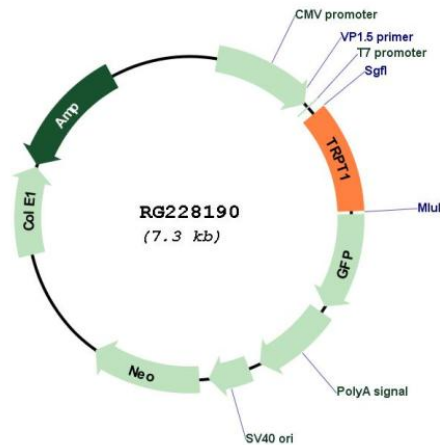
[View online »](#)

Restriction Sites: SgfI-MluI

Cloning Scheme:



Plasmid Map:



ACCN: NM_001160389

ORF Size: 765 bp

OTI Disclaimer: The molecular sequence of this clone aligns with the gene accession number as a point of reference only. However, individual transcript sequences of the same gene can differ through naturally occurring variations (e.g. polymorphisms), each with its own valid existence. This clone is substantially in agreement with the reference, but a complete review of all prevailing variants is recommended prior to use. [More info](#)

OTI Annotation: This clone was engineered to express the complete ORF with an expression tag. Expression varies depending on the nature of the gene.

Components:	The ORF clone is ion-exchange column purified and shipped in a 2D barcoded Matrix tube containing 10ug of transfection-ready, dried plasmid DNA (reconstitute with 100 ul of water).
Reconstitution Method:	<ol style="list-style-type: none">1. Centrifuge at 5,000xg for 5min.2. Carefully open the tube and add 100ul of sterile water to dissolve the DNA.3. Close the tube and incubate for 10 minutes at room temperature.4. Briefly vortex the tube and then do a quick spin (less than 5000xg) to concentrate the liquid at the bottom.5. Store the suspended plasmid at -20°C. The DNA is stable for at least one year from date of shipping when stored at -20°C.
RefSeq:	<u>NM_001160389.1, NP_001153861.1</u>
RefSeq Size:	1077 bp
RefSeq ORF:	768 bp
Locus ID:	83707
UniProt ID:	<u>Q86TN4</u>
Cytogenetics:	11q13.1
Gene Summary:	Catalyzes the last step of tRNA splicing, the transfer of the splice junction 2'-phosphate from ligated tRNA to NAD to produce ADP-ribose 1''-2'' cyclic phosphate.[UniProtKB/Swiss-Prot Function]