

Product datasheet for **RG228183**

TATDN3 (NM_001146170) Human Tagged ORF Clone

Product data:

Product Type: Expression Plasmids
Product Name: TATDN3 (NM_001146170) Human Tagged ORF Clone
Tag: TurboGFP
Symbol: TATDN3
Mammalian Cell Selection: Neomycin
Vector: pCMV6-AC-GFP (PS100010)
E. coli Selection: Ampicillin (100 ug/mL)
ORF Nucleotide Sequence: >RG228183 representing NM_001146170
Red=Cloning site Blue=ORF Green=Tags(s)

TTTTGTAATACGACTCACTATAGGGCGGCCGGAATTCGTCGACTGGATCCGGTACCGAGGAGATCTGCC
GCCGCGATCGCC

ATGCGAGCGGCTGGCGTAGGCTTGGTGGACTGTCACTGCCACCTCTCCGCCCGGACTTTGACCGCGATT
 TGGATGATGTGTTGGAGAAAGCCAAGAAGGCCAATGTTGTGGCCCTTGTTGGCAGTTGCCGAACATTCAGG
 AGAATTTGAAAAGATTATGCAACTTTCAGAAAGGTATAATGGGTTTGCTGCCATGCTTGGGTGTTTCAT
 CCAGTTCAAGGACTTCCACCAGAAGACCAAGAAGTGTACACTAAAGGTTGGACTAGATTTCTCCCCCA
 GATTTGCTGGCACTGGTGAACAGAAGGAAGCAAGCAAGTCCCTAATCAGACAGATCCAGTTAGCCAA
 AAGACTAAATTTGCCTGTAATGTGCACTACGCTCTGCTGGAAGACCTACCATCAACCTTTTACAAGAG
 CAAGGTGCTGAGAAGGTAAGTGTGTCATGCAATTTGATGGTTCGCCATCTGTAGCCATGGAAGGAGTAAGAG
 CTGGGTAATTTCTCAATTTCCCTTCTATCATAAGAAGTGGACAGAAGCAGAACTTGTGAAACAATT
 GCCTTTAACTTCTATATGCTTAGAAACAGATTCACCTGCACTAGGACCAGAAAAACAGGTACGGAATGAG
 CCCTGGAACATTTCTATTTTCCAGCAGAATATATTGCCAGGTGAAAGGGATCTCAGTGAAGAAGTTATAG
 AAGTGACGACACAGAATGCATTAATAAAGTGTTCCTAAGCTCCGACACTTGCTCCAGAAA

ACGCGTACGCGGCCGCTCGAG - GFP Tag - GTTTAA

Protein Sequence: >RG228183 representing NM_001146170
Red=Cloning site Green=Tags(s)

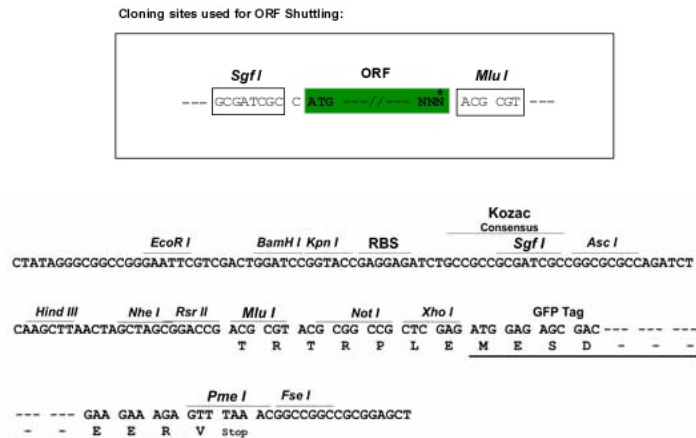
MRAAGVGLVDCHCHLSAPDFDRDLDDVLEKAKKANVVALVAVAEHSGEFEKIMQLSERYNGFVLPCLGVH
 PVQGLPPEDQRSVTLKVGLDFSPRFAGTGEQKEEQRQVLIRQIQLAKRLNLPVNVHSRSAGRPTINLLQE
 QGAEKVLLHAFDGRPSVAMEGVRAGYFFSIPPSIIRSGQKQKLVKQLPLTSICLETDSPALGPEKQVRNE
 PWNISISAIEYIAQVKGISVEEVIEVTTQNALKLFPKLRHLLQK

TRTRPLE - GFP Tag - V



Restriction Sites: SgfI-MluI

Cloning Scheme:



ACCN: NM_001146170

ORF Size: 759 bp

OTI Disclaimer: The molecular sequence of this clone aligns with the gene accession number as a point of reference only. However, individual transcript sequences of the same gene can differ through naturally occurring variations (e.g. polymorphisms), each with its own valid existence. This clone is substantially in agreement with the reference, but a complete review of all prevailing variants is recommended prior to use. [More info](#)

OTI Annotation: This clone was engineered to express the complete ORF with an expression tag. Expression varies depending on the nature of the gene.

Components: The ORF clone is ion-exchange column purified and shipped in a 2D barcoded Matrix tube containing 10ug of transfection-ready, dried plasmid DNA (reconstitute with 100 ul of water).

Reconstitution Method:

1. Centrifuge at 5,000xg for 5min.
2. Carefully open the tube and add 100ul of sterile water to dissolve the DNA.
3. Close the tube and incubate for 10 minutes at room temperature.
4. Briefly vortex the tube and then do a quick spin (less than 5000xg) to concentrate the liquid at the bottom.
5. Store the suspended plasmid at -20°C. The DNA is stable for at least one year from date of shipping when stored at -20°C.

RefSeq: [NM_001146170.1](#), [NP_001139642.1](#)

RefSeq Size: 2525 bp

RefSeq ORF: 762 bp

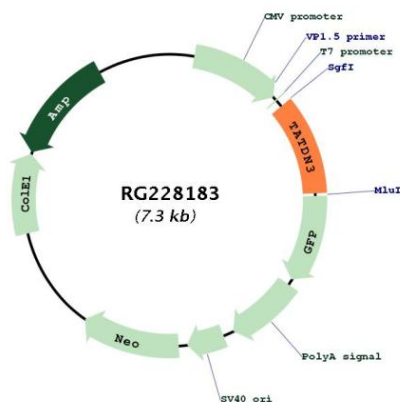
Locus ID: 128387

UniProt ID: [Q17R31](#)

Cytogenetics: 1q32.3

Gene Summary: Putative deoxyribonuclease.[UniProtKB/Swiss-Prot Function]

Product images:



Circular map for RG228183