

Product datasheet for **RG228127**

SPINT2 (NM_001166103) Human Tagged ORF Clone

Product data:

Product Type: Expression Plasmids
Product Name: SPINT2 (NM_001166103) Human Tagged ORF Clone
Tag: TurboGFP
Symbol: SPINT2
Synonyms: DIAR3; HAI-2; HAI2; Kop; PB
Mammalian Cell Selection: Neomycin
Vector: pCMV6-AC-GFP (PS100010)
E. coli Selection: Ampicillin (100 ug/mL)
ORF Nucleotide Sequence: >RG228127 representing NM_001166103
Red=Cloning site Blue=ORF Green=Tags(s)

TTTTGTAATACGACTCACTATAGGGCGGCCGGAATTCGTCGACTGGATCCGGTACCGAGGAGATCTGCC
GCC**CGATCGCC**

ATGGCGCAGCTGTGCGGGCTGAGGCGGAGCCGGGCGTTTCTCGCCCTGCTGGGATCGCTGCTCCTCTCTG
GGGTCCTGGCGGCCGACCGAGAACGCAGCATCCACGAGAATGCCACGGGTGACCTGGCCACCAGCAGGAA
TGCAGCGGATTCCTGTCCCAAGTGTCCCAAGGAGGATTCTGAAGACCACTCCAGCGATATGTTT
AACTATGAAGAATACTGCACCGCAACGCAGTCACTGGGCTTGGCGTGCATCCTCCCACGCTGGTACT
TTGACGTGGAGAGAACTCCTGCAATAACTTCATCTATGGAGGCTGCCGGGCAATAAGAACAGCTACCG
CTCTGAGGAGGCCTGCATGCTCCGCTGCTCCGCCAGCAGGAGAATCCTCCCCTGCCCTTGGCTCAAAG
GTGGTGGTTCTGGCGGGGCTGTTCTGATGTTGATCCTTCTTGGGAGCCTCCATGGTCTACCTGA
TCCGGGTGGCACGGAGGAACCAGGAGCGTCCCTGCGCACCGTCTGGAGCTCCGGAGATGACAAGGAGCA
GCTGGTGAAGAACACATATGTCCTG

ACGCGTACGCGGCCGCTCGAG - GFP Tag - GTTTAA

Protein Sequence: >RG228127 representing NM_001166103
Red=Cloning site Green=Tags(s)

MAQLCGLRRSRAFLALLGSLLLSGVLAADRERSIHENATGDLATSRNAADSSVPSAPRRQDSEDHSSDMF
NYEEYCTANAVTGPCRASFRWYFDVERNSCNNFIYGGCRGNKNSYRSEEACMLRCFRQQENPPLPLGSK
VVVLAGL FVMVLILFLGASMVYLIRVARRNQERALRTVWSSGDDKEQLVKNTYVL

TRTRPLE - GFP Tag - V

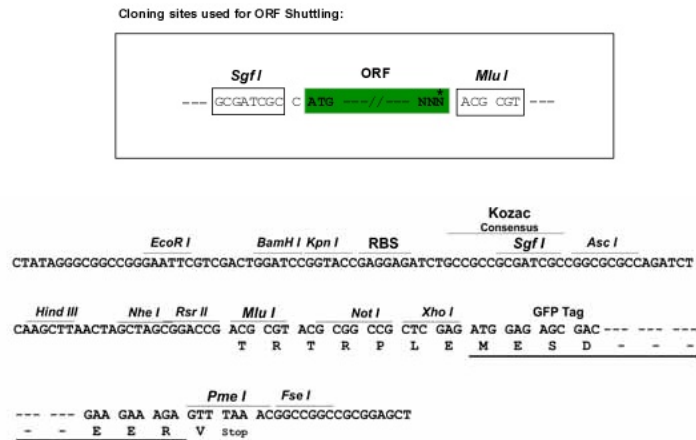
Chromatograms: https://cdn.origene.com/chromatograms/ja3321_c07.zip



[View online »](#)

Restriction Sites: SgfI-MluI

Cloning Scheme:



ACCN: NM_001166103

ORF Size: 585 bp

OTI Disclaimer: Due to the inherent nature of this plasmid, standard methods to replicate additional amounts of DNA in E. coli are highly likely to result in mutations and/or rearrangements. Therefore, OriGene does not guarantee the capability to replicate this plasmid DNA. Additional amounts of DNA can be purchased from OriGene with batch-specific, full-sequence verification at a reduced cost. Please contact our customer care team at custsupport@origene.com or by calling 301.340.3188 option 3 for pricing and delivery.

The molecular sequence of this clone aligns with the gene accession number as a point of reference only. However, individual transcript sequences of the same gene can differ through naturally occurring variations (e.g. polymorphisms), each with its own valid existence. This clone is substantially in agreement with the reference, but a complete review of all prevailing variants is recommended prior to use. [More info](#)

OTI Annotation: This clone was engineered to express the complete ORF with an expression tag. Expression varies depending on the nature of the gene.

Components: The ORF clone is ion-exchange column purified and shipped in a 2D barcoded Matrix tube containing 10ug of transfection-ready, dried plasmid DNA (reconstitute with 100 ul of water).

- Reconstitution Method:**
1. Centrifuge at 5,000xg for 5min.
 2. Carefully open the tube and add 100ul of sterile water to dissolve the DNA.
 3. Close the tube and incubate for 10 minutes at room temperature.
 4. Briefly vortex the tube and then do a quick spin (less than 5000xg) to concentrate the liquid at the bottom.
 5. Store the suspended plasmid at -20°C. The DNA is stable for at least one year from date of shipping when stored at -20°C.

RefSeq: [NM_001166103.2](#)

RefSeq Size: 1646 bp

RefSeq ORF: 588 bp

Locus ID: 10653

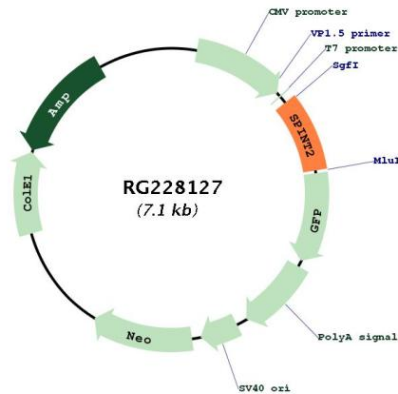
UniProt ID: [O43291](#)

Cytogenetics: 19q13.2

Protein Families: Transmembrane

Gene Summary: This gene encodes a transmembrane protein with two extracellular Kunitz domains that inhibits a variety of serine proteases. The protein inhibits HGF activator which prevents the formation of active hepatocyte growth factor. This gene is a putative tumor suppressor, and mutations in this gene result in congenital sodium diarrhea. Multiple transcript variants encoding different isoforms have been found for this gene. [provided by RefSeq, Oct 2009]

Product images:



Circular map for RG228127