

Product datasheet for **RG228120**

RAB37 (NM_001163990) Human Tagged ORF Clone

Product data:

Product Type: Expression Plasmids
Product Name: RAB37 (NM_001163990) Human Tagged ORF Clone
Tag: TurboGFP
Symbol: RAB37
Mammalian Cell Selection: Neomycin
Vector: pCMV6-AC-GFP (PS100010)
E. coli Selection: Ampicillin (100 ug/mL)
ORF Nucleotide Sequence: >RG228120 representing NM_001163990
Red=Cloning site Blue=ORF Green=Tags(s)

TTTTGTAATACGACTCACTATAGGGCGGCCGGAATTCGTCGACTGGATCCGGTACCGAGGAGATCTGCC
GCC**CGATCGCC**

ATGACGGGCACGCCAGGCGCCGTTGCCACCCGGGATGGCGAGGCCCCCGAGCGCTCCCCGCCCTGCAGTC
CGAGCTACGACCTCACGGGCAAGAACAAGGTGGTACTGTGGATGGCGTGAGAGTGAAGCTGCAGATCTG
GGACACCCTGGGCAGGAACGGTTCCGAAGCGTCACCCATGCTTATTACAGAGATGCTCAGGCCTTGCTT
CTGCTGTATGACATCACCAACAAATCTTCTTTTCGACAACATCAGGGCCTGGCTCACTGAGATTCATGAGT
ATGCCAGAGGGACGTGGTATCATGTCTGCTAGGCAACAAGCGGATATGAGCAGCGAAAGAGTATCCG
TTCCGAAGACGGAGAGACCTTGGCCAGGGAGTACGGTGTTCCTTCTGGAGACCAGCGCCAAGACTGGC
ATGAATGTGGAGTTAGCCTTTCTGGCCATCGCCAAGGAACTGAAATACCGGGCCGGGCATCAGGCGGATG
AGCCAGCTTCCAGATCCGAGACTATGTAGAGTCCAGAGAAGCGCTCCAGCTGCTGCTCCTTCATG

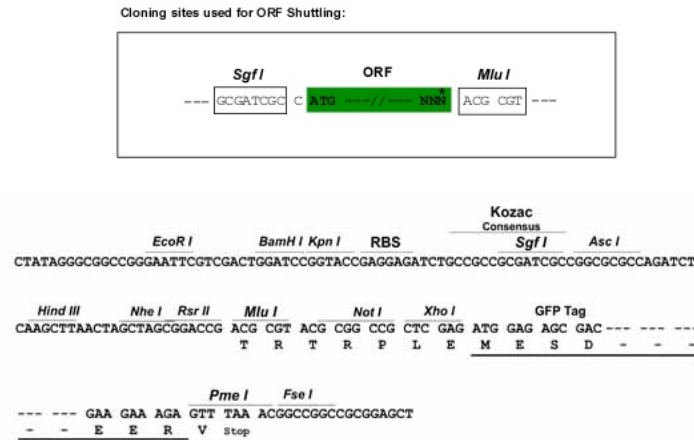
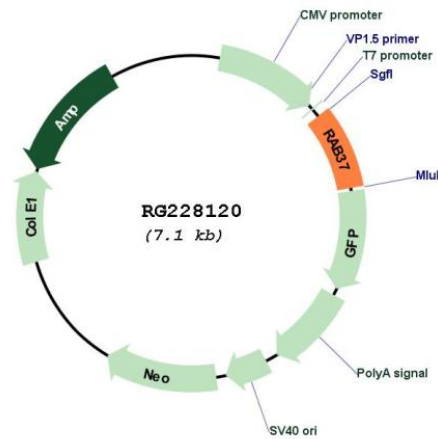
ACGCGTACGCGGCCGCTCGAG - GFP Tag - GTTTAA

Protein Sequence: >RG228120 representing NM_001163990
Red=Cloning site Green=Tags(s)
MTGTPGAVATRDGEAPERSPPCSPSYDLTGKNKVVTVDGVRVKLQIWDTAGQERFRSVTHAYYRDAQALL
LLYDITNKSSFDNIRAWLTEIHEYAQRDVVIMLLGNKADMSSERVIRSEDGETLAREYGVPFLESAKTG
MNVELAF LAIAKELKYRAGHQADEPSFQIRDYVESQKKRSSCCSFM

TRTRPLE - GFP Tag - V

Restriction Sites: SgfI-MluI



Cloning Scheme:

Plasmid Map:


ACCN: NM_001163990

ORF Size: 558 bp

OTI Disclaimer: The molecular sequence of this clone aligns with the gene accession number as a point of reference only. However, individual transcript sequences of the same gene can differ through naturally occurring variations (e.g. polymorphisms), each with its own valid existence. This clone is substantially in agreement with the reference, but a complete review of all prevailing variants is recommended prior to use. [More info](#)

OTI Annotation: This clone was engineered to express the complete ORF with an expression tag. Expression varies depending on the nature of the gene.

Components:	The ORF clone is ion-exchange column purified and shipped in a 2D barcoded Matrix tube containing 10ug of transfection-ready, dried plasmid DNA (reconstitute with 100 ul of water).
Reconstitution Method:	<ol style="list-style-type: none">1. Centrifuge at 5,000xg for 5min.2. Carefully open the tube and add 100ul of sterile water to dissolve the DNA.3. Close the tube and incubate for 10 minutes at room temperature.4. Briefly vortex the tube and then do a quick spin (less than 5000xg) to concentrate the liquid at the bottom.5. Store the suspended plasmid at -20°C. The DNA is stable for at least one year from date of shipping when stored at -20°C.
RefSeq:	<u>NM_001163990.2</u>
RefSeq Size:	2587 bp
RefSeq ORF:	561 bp
Locus ID:	326624
UniProt ID:	<u>Q96AX2</u>
Cytogenetics:	17q25.1
Protein Families:	Druggable Genome, Secreted Protein
Gene Summary:	Rab proteins are low molecular mass GTPases that are critical regulators of vesicle trafficking. For additional background information on Rab proteins, see MIM 179508.[supplied by OMIM, Apr 2006]