

## Product datasheet for **RG228060**

### Lymphocyte Antigen 6 Complex (LY6K) (NM\_001160354) Human Tagged ORF Clone

#### Product data:

**Product Type:** Expression Plasmids  
**Product Name:** Lymphocyte Antigen 6 Complex (LY6K) (NM\_001160354) Human Tagged ORF Clone  
**Tag:** TurboGFP  
**Symbol:** LY6K  
**Synonyms:** CT97; HSJ001348; ly-6K; URLC10  
**Mammalian Cell Selection:** Neomycin  
**Vector:** pCMV6-AC-GFP (PS100010)  
**E. coli Selection:** Ampicillin (100 ug/mL)  
**ORF Nucleotide Sequence:** >RG228060 representing NM\_001160354  
 Red=Cloning site Blue=ORF Green=Tags(s)

TTTTGTAATACGACTCACTATAGGGCGGCCGGAATTCGTCGACTGGATCCGGTACCGAGGAGATCTGCC  
 GCC**CGATCGCC**

ATGGCGCTGCTCGCCTTGCTGCTGGTCGTGGCCCTACCGCGGTGTGGACAGACGCCAACCTGACTGCGA  
 GACAACGAGATCCAGAGGACTCCAGCGAACGGACGAGGGTGACAATAGAGTGTGGTGCATGTTTGTGA  
 GAGAGAAAACACTTTCGAGTGCCAGAACCAAGGAGGTGCAAATGGACAGAGCCATACTGCGTTATAGCG  
 GCCGTGACAACCCCTAGACCCGATTCCCAGTGCATATGGACAGGCCATACCACGCAGAAGCCAGCCCTT  
 CCCTGAAGCAGCATTCAACACACAGGCCCTGGCCCTCGTCTCCCGACTCCCCCTTGGTGCCCGATTGAC  
 TGTGCACCTT

**ACGCGT**ACGCGGCCGCTCGAG - GFP Tag - GTTTAA

**Protein Sequence:** >RG228060 representing NM\_001160354  
 Red=Cloning site Green=Tags(s)  
 MALLALLLVVALPRVWDANLTARQRPEDSQRTDEGDNRVWCHVCERENTFECQNP RRCKWTEPYCVIA  
 AVTTPRPAFPVHMDRPHYAEASPSLKQHS THRPGRPPDSPLVPLTVHL

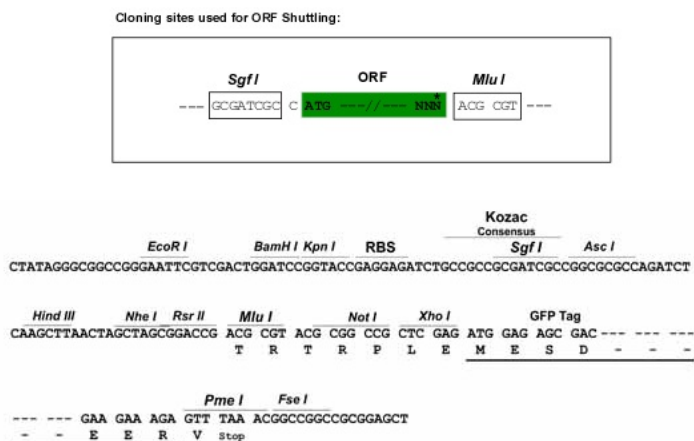
**TRTRPLE** - GFP Tag - V

**Restriction Sites:** Sgfl-MluI

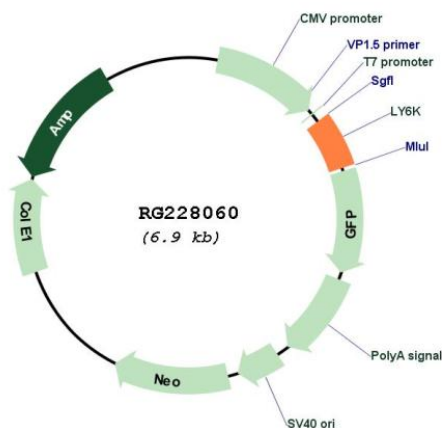


[View online »](#)

Cloning Scheme:



Plasmid Map:



ACCN: NM\_001160354

ORF Size: 360 bp

OTI Disclaimer: The molecular sequence of this clone aligns with the gene accession number as a point of reference only. However, individual transcript sequences of the same gene can differ through naturally occurring variations (e.g. polymorphisms), each with its own valid existence. This clone is substantially in agreement with the reference, but a complete review of all prevailing variants is recommended prior to use. [More info](#)

<b>OTI Annotation:</b>	This clone was engineered to express the complete ORF with an expression tag. Expression varies depending on the nature of the gene.
<b>Components:</b>	The ORF clone is ion-exchange column purified and shipped in a 2D barcoded Matrix tube containing 10ug of transfection-ready, dried plasmid DNA (reconstitute with 100 ul of water).
<b>Reconstitution Method:</b>	<ol style="list-style-type: none"><li>1. Centrifuge at 5,000xg for 5min.</li><li>2. Carefully open the tube and add 100ul of sterile water to dissolve the DNA.</li><li>3. Close the tube and incubate for 10 minutes at room temperature.</li><li>4. Briefly vortex the tube and then do a quick spin (less than 5000xg) to concentrate the liquid at the bottom.</li><li>5. Store the suspended plasmid at -20°C. The DNA is stable for at least one year from date of shipping when stored at -20°C.</li></ol>
<b>RefSeq:</b>	<a href="#">NM_001160354.2</a>
<b>RefSeq Size:</b>	1994 bp
<b>RefSeq ORF:</b>	363 bp
<b>Locus ID:</b>	54742
<b>UniProt ID:</b>	<a href="#">Q17RY6</a>
<b>Cytogenetics:</b>	8q24.3
<b>Protein Families:</b>	Transmembrane
<b>Gene Summary:</b>	Required for sperm migration into the oviduct and male fertility by controlling binding of sperm to zona pellucida (By similarity). May play a role in cell growth (PubMed:18089789). [UniProtKB/Swiss-Prot Function]