

## Product datasheet for **RG228047**

### **RPAIN (NM\_001160246) Human Tagged ORF Clone**

#### Product data:

**Product Type:** Expression Plasmids  
**Product Name:** RPAIN (NM\_001160246) Human Tagged ORF Clone  
**Tag:** TurboGFP  
**Symbol:** RPAIN  
**Synonyms:** HRIP; RIP  
**Mammalian Cell Selection:** Neomycin  
**Vector:** pCMV6-AC-GFP (PS100010)  
**E. coli Selection:** Ampicillin (100 ug/mL)  
**ORF Nucleotide Sequence:** >RG228047 representing NM\_001160246  
Red=Cloning site Blue=ORF Green=Tags(s)

TTTTGTAATACGACTCACTATAGGGCGCCGGAATTCGTCGACTGGATCCGGTACCGAGGAGATCTGCC  
GCC**CGATCGCC**

ATGGCGGAGTCGTTGAGGTCTCCGCGCCGCTCCCTGTACAACTGGTGGGCTCGCCGCCTTGAAAGAGG  
CTTCCGGCAGAGATGCCTGGAGAGAATGAGAAACAGCCGGGACAGGCTCCTAACAGGTACCGCCAGGC  
TGAAGCAGTGGCCAGGAATTCTCAGAACAGCTTTCTAGTTCAAGAGGTGATGGAAGAAGAGTGAAT  
GCTTTCAGTCAGTGGAGAATTGTCCAGAAGACTTGGCTCAGCTGGAGGAGCTGATAGACATGGCTGTGC  
TGGAGGAAATTCAACAGGAGCTGATCAACCAAGCCTG

**ACGCGT**ACGCGGCCGCTCGAG - GFP Tag - GTTTAA

**Protein Sequence:** >RG228047 representing NM\_001160246  
Red=Cloning site Green=Tags(s)  
MAESLRSPRRSLYKLVGSPWPKEAFRQRCLERMNRSRDRLLNRYRQAGSSGPGNSQNSFLVQEVMEEEWN  
ALQSVENCPEDLAQLLEELIDMAVLEEIQQELINQGL

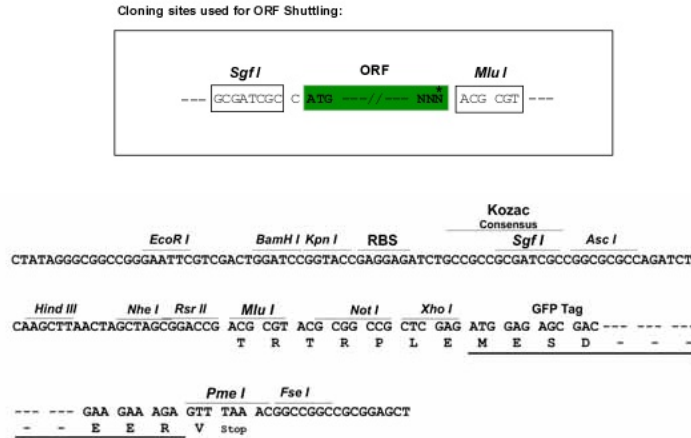
**TRTRPLE** - GFP Tag - V

**Restriction Sites:** Sgfl-MluI

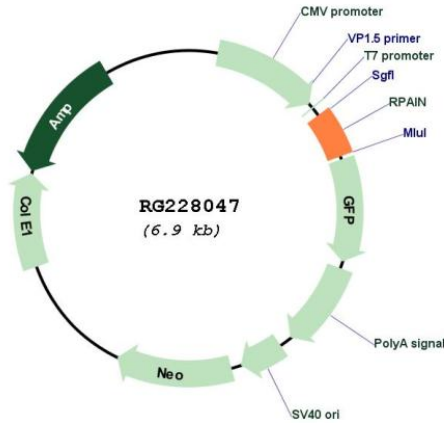


[View online »](#)

**Cloning Scheme:**



**Plasmid Map:**



**ACCN:**

NM\_001160246

**ORF Size:**

318 bp

**OTI Disclaimer:**

The molecular sequence of this clone aligns with the gene accession number as a point of reference only. However, individual transcript sequences of the same gene can differ through naturally occurring variations (e.g. polymorphisms), each with its own valid existence. This clone is substantially in agreement with the reference, but a complete review of all prevailing variants is recommended prior to use. [More info](#)

<b>OTI Annotation:</b>	This clone was engineered to express the complete ORF with an expression tag. Expression varies depending on the nature of the gene.
<b>Components:</b>	The ORF clone is ion-exchange column purified and shipped in a 2D barcoded Matrix tube containing 10ug of transfection-ready, dried plasmid DNA (reconstitute with 100 ul of water).
<b>Reconstitution Method:</b>	<ol style="list-style-type: none"><li>1. Centrifuge at 5,000xg for 5min.</li><li>2. Carefully open the tube and add 100ul of sterile water to dissolve the DNA.</li><li>3. Close the tube and incubate for 10 minutes at room temperature.</li><li>4. Briefly vortex the tube and then do a quick spin (less than 5000xg) to concentrate the liquid at the bottom.</li><li>5. Store the suspended plasmid at -20°C. The DNA is stable for at least one year from date of shipping when stored at -20°C.</li></ol>
<b>RefSeq:</b>	<u><a href="#">NM_001160246.1</a></u> , <u><a href="#">NP_001153718.1</a></u>
<b>RefSeq Size:</b>	1362 bp
<b>RefSeq ORF:</b>	321 bp
<b>Locus ID:</b>	84268
<b>UniProt ID:</b>	<u><a href="#">Q86UA6</a></u>
<b>Cytogenetics:</b>	17p13.2
<b>Gene Summary:</b>	Mediates the import of RPA complex into the nucleus, possibly via some interaction with importin beta. Isoform 2 is sumoylated and mediates the localization of RPA complex into the PML body of the nucleus, thereby participating in RPA function in DNA metabolism. [UniProtKB/Swiss-Prot Function]