

## Product datasheet for **RG228039**

### **BRI3 (NM\_001159491) Human Tagged ORF Clone**

#### Product data:

Product Type: Expression Plasmids  
 Product Name: BRI3 (NM\_001159491) Human Tagged ORF Clone  
 Tag: TurboGFP  
 Symbol: BRI3  
 Synonyms: I3  
 Mammalian Cell Selection: Neomycin  
 Vector: pCMV6-AC-GFP (PS100010)  
 E. coli Selection: Ampicillin (100 ug/mL)  
 ORF Nucleotide Sequence: >RG228039 representing NM\_001159491  
 Red=Cloning site Blue=ORF Green=Tags(s)

CTATAGGGCGGCCGGAATTCGTCGACTGGATCCGGTACCGAGGAGATCTGCC  
 GCC**CGATCGCC**

ATGGACCACAAGCCGCTGCTGCAGGAGCGGCCGCCCGCTACAACCTGGAGGCCGCCAGGGCGACTACG  
 CGTGCGGCCCGCACGGCTACGGCGCCATCCCCGCCGCCCGCCGCCCGCTACCCCTACCTCGTCAC  
 AGGGATACCCACCCACCATCCCAGGGTCTACAACATCCACAGCCGGACCGTCACCCGCTATCCTGCCAAC  
 TCTATCGTGGTCGTAGGAGGCTGCTCTGTCTGCAGGCACCAGAGGTCATCCTGGCTTACACGTATCCTT  
 TGAGAGTCTGTACC

**CTCGAG** - GFP Tag - GTTTAA

Protein Sequence: >RG228039 representing NM\_001159491  
 Red=Cloning site Green=Tags(s)

MDHKPLLQERPPAYNLEAGQGDYACGPHGYGAIPAAPPPPPYPYLVGTGIPTHHPRVYNIHSRTVTRYPAN  
 SIVVVGCPVCRHQRSSWLYTYPLRVCT

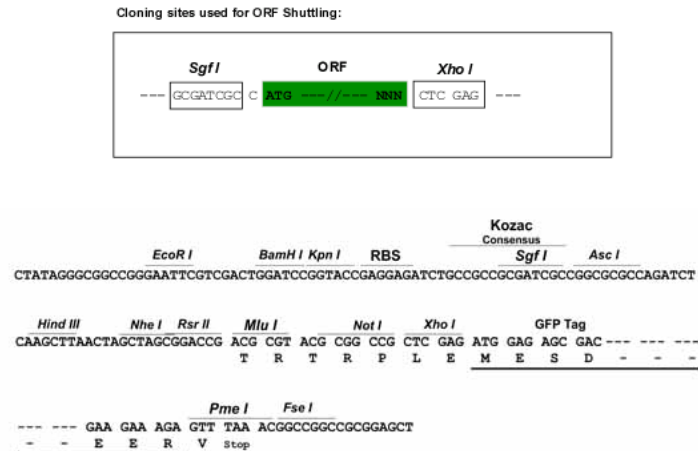
**LE** - GFP Tag - V

Restriction Sites: SgfI-XhoI



[View online »](#)

## Cloning Scheme:



ACCN: NM\_001159491

ORF Size: 294 bp

OTI Disclaimer: The molecular sequence of this clone aligns with the gene accession number as a point of reference only. However, individual transcript sequences of the same gene can differ through naturally occurring variations (e.g. polymorphisms), each with its own valid existence. This clone is substantially in agreement with the reference, but a complete review of all prevailing variants is recommended prior to use. [More info](#)

OTI Annotation: This clone was engineered to express the complete ORF with an expression tag. Expression varies depending on the nature of the gene.

Components: The ORF clone is ion-exchange column purified and shipped in a 2D barcoded Matrix tube containing 10ug of transfection-ready, dried plasmid DNA (reconstitute with 100 ul of water).

Reconstitution Method:

1. Centrifuge at 5,000xg for 5min.
2. Carefully open the tube and add 100ul of sterile water to dissolve the DNA.
3. Close the tube and incubate for 10 minutes at room temperature.
4. Briefly vortex the tube and then do a quick spin (less than 5000xg) to concentrate the liquid at the bottom.
5. Store the suspended plasmid at -20°C. The DNA is stable for at least one year from date of shipping when stored at -20°C.

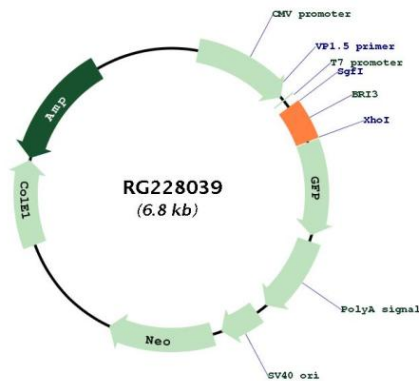
RefSeq: [NM\\_001159491.2](#)

RefSeq Size: 699 bp

RefSeq ORF: 297 bp

Locus ID:	25798
UniProt ID:	<a href="#">O95415</a>
Cytogenetics:	7q21.3
Protein Families:	Transmembrane
Gene Summary:	Participates in tumor necrosis factor-alpha (TNF)-induced cell death (PubMed:14592447). May be a target of Wnt/beta-catenin signaling in the liver (PubMed:20538055).[UniProtKB/Swiss-Prot Function]

## Product images:



Circular map for RG228039