

Product datasheet for **RG228023**

Small integral membrane protein 6 (SMIM6) (NM_001162997) Human Tagged ORF Clone

Product data:

Product Type: Expression Plasmids
Product Name: Small integral membrane protein 6 (SMIM6) (NM_001162997) Human Tagged ORF Clone
Tag: TurboGFP
Symbol: SMIM6
Synonyms: C17orf110; ELN
Mammalian Cell Selection: Neomycin
Vector: pCMV6-AC-GFP (PS100010)
E. coli Selection: Ampicillin (100 ug/mL)
ORF Nucleotide Sequence: >RG228023 representing NM_001162997
 Red=Cloning site Blue=ORF Green=Tags(s)

TTTTGTAATACGACTCACTATAGGGCGGCCGGAATTCGTCGACTGGATCCGGTACCGAGGAGATCTGCC
 GCC**CGATCGCC**

ATGGACCAACTGGTATTCAAAGAGACAATCTGGAATGATGCGTTCTGGCAGAACCCTGGGACCAGGGGG
GCCTGGCAGTGATTATCTTATTCATCACCGCTGTCCTGCTTCATCTTATTTGCCATCGTGTGGTTT
ACTCACTCCACAGAAAACACTCAGTGTGAAGCGGGTGAAGAGGAG

ACGCGTACGCGGCCGCTCGAG - GFP Tag - GTTTAA

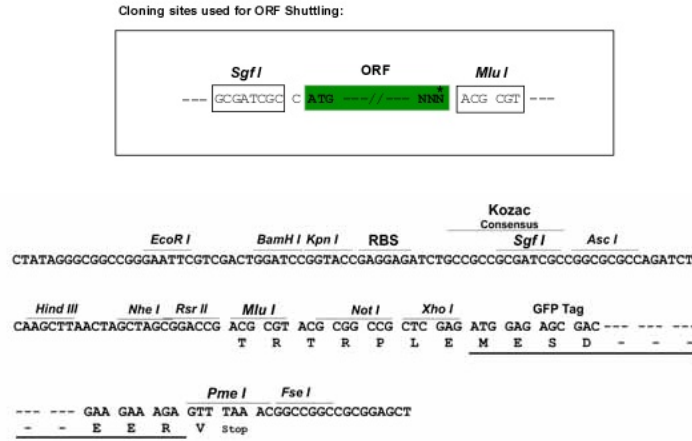
Protein Sequence: >RG228023 representing NM_001162997
 Red=Cloning site Green=Tags(s)
 MDQLVFKETIWNDAFWQNPWDQGLAVIILFITAVLLLILFAIVFGLLTSTENTQCEAGEEE
TRTRPLE - GFP Tag - V

Restriction Sites: Sgfl-MluI

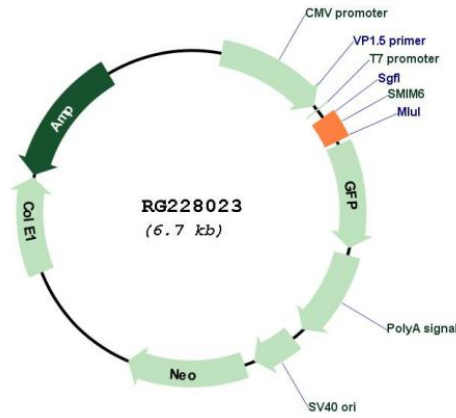


[View online »](#)

Cloning Scheme:



Plasmid Map:



ACCN: NM_001162997

ORF Size: 186 bp

OTI Disclaimer:	The molecular sequence of this clone aligns with the gene accession number as a point of reference only. However, individual transcript sequences of the same gene can differ through naturally occurring variations (e.g. polymorphisms), each with its own valid existence. This clone is substantially in agreement with the reference, but a complete review of all prevailing variants is recommended prior to use. More info
OTI Annotation:	This clone was engineered to express the complete ORF with an expression tag. Expression varies depending on the nature of the gene.
Components:	The ORF clone is ion-exchange column purified and shipped in a 2D barcoded Matrix tube containing 10ug of transfection-ready, dried plasmid DNA (reconstitute with 100 ul of water).
Reconstitution Method:	<ol style="list-style-type: none"> 1. Centrifuge at 5,000xg for 5min. 2. Carefully open the tube and add 100ul of sterile water to dissolve the DNA. 3. Close the tube and incubate for 10 minutes at room temperature. 4. Briefly vortex the tube and then do a quick spin (less than 5000xg) to concentrate the liquid at the bottom. 5. Store the suspended plasmid at -20°C. The DNA is stable for at least one year from date of shipping when stored at -20°C.
RefSeq:	NM_001162997.2
RefSeq Size:	842 bp
RefSeq ORF:	189 bp
Locus ID:	100130933
UniProt ID:	P0DI80
Cytogenetics:	17q25.1