

Product datasheet for **RG227980**

ATP13A2 (NM_001141974) Human Tagged ORF Clone

Product data:

Product Type: Expression Plasmids
Product Name: ATP13A2 (NM_001141974) Human Tagged ORF Clone
Tag: TurboGFP
Symbol: ATP13A2
Synonyms: CLN12; HSA9947; KRPPD; PARK9; SPG78
Mammalian Cell Selection: Neomycin
Vector: pCMV6-AC-GFP (PS100010)
E. coli Selection: Ampicillin (100 ug/mL)
ORF Nucleotide Sequence: >RG227980 representing NM_001141974
 Red=Cloning site Blue=ORF Green=Tags(s)

TTTTGTAATACGACTCACTATAGGGCGGCCGGAATTCGTCGACTGGATCCGGTACCGAGGAGATCTGCC
 GCC**CGATCGCC**

ATGAGCGCAGACAGCAGCCCTCTCGTGGGCAGCACGCCACCGTTATGGGACCCTGACGATAGGGACAT
 CAATAGATCCCCTCAGCTCCTCAGTTTCATCCGTGAGGCTCAGCGGCTACTGTGGCAGTCCATGGAGGGT
 CATCGGCTATCACGTCGTGGTCTGGATGATGGCTGGGATCCCTTTGCTGCTCTCCGTTGGAAGCCCTG
 TGGGGGTGCGGCTCGGCTCCGCCCTGCAACCTGGCCACGCCGAAACTCGTTATCGAAATAAGAG
 ACAAGAGGATAGTTCTGGCAGCTCTTACTGTCCAGGTGCAGACTGAGGCCATCGGCGAGGGCAGCCT
 GGAGCCGTCCCCACAGTCCCAGGCAGAGGATGGCCGGAGCCAGGCGGAGTTGGGGCGGTACCAGAGGGT
 GCCTGGAAGGATACGGCCAGCTCCACAAGAGCGAGGAGGCGAAGCGGGTCTGCGGTATTACCTCTTCC
 AGGGCCAGCGCTATATCTGGATCGAGACCCAGCAAGCCTTCTACCAGGTGAGCCTCCTGGACCATGGCCG
 CTCTTGTGACGACGTCCACCGCTCCCGCCATGGCCTCAGCCTCCAGGACCAATGGTGAGGAAGGCCATT
 TACGGCCCAACGTGATCAGCATACCGGTCAAGTCTACCCAGCTGCTGGTGGACGAGGCACTGAACC
 CCTACTATGGGTCCAGGCCTTCAGCATCGCGCTGTGGCTGGCTGACCACTACTGTTACGCCCTGTG
 CATCTTCTCATTTCTCCATCTCCATCTGCCTGTGCTGTACAAGACCAGAAAGCAAAGCCAGACTCTA
 AGGGACATGGTCAAGTTGTCCATGCGGGTGTGCTGTGCCCGCCAGGGGAGAGGAAGAGTGGTGGACT
 CCAGTGAGCTAGTGCCCGGAGACTGCCTGGTGTGCCCCGGGAGGGTGGGCTGATGCCCTGTGCGCGC
 CCTGGTGGCCGGCGAGTGCATGGTGAATGAGAGCTCTCTGACAGGAGAGAGCATTCCAGTCTGAAGACG
 GCACTGCCGAGGGGCTGGGGCCCTACTGTGACAGACACACCGCGGCACACACTCTTCTGCGGGACCC
 TCATCTTGACGGCCCGGCTATGTGGGACCGCACGTCTGGCAGTGGTACCCGCACAGGGTCTGCAC
 GGCAAAAGGGGCTGGTGGTCCATCTTGCACCCCGGCCATCAACTCAAGTTCTATAAACACAGC
 ATGAAGTTTGGCTGCCCTCTGTCTGGCTCTCCTCGGCACCATCTACAGCATCTTCATCCTCTACC
 GAAACCGGTGCCTCTGAACGAGATTGTAATCCGGGCTCTCGACCTGGTACCGTGGTGGTCCACCTGC
 CCTGCCTGCTGCCATGACTGTGTGCACGCTCTACGCCAGAGCCGACTGCGGAGACAGGGCATTCTCTG



[View online >](#)

ATCCACCCACTGCGCATCAACCTGGGGGCAAGCTGCAGCTGGTGTGTTTCGACAAGACGGGCACCCTCA
CTGAGGACGGCTTAGACGTGATGGGGTGGTGCCCTGAAGGGCAGGCATTCTGCCCTGGTCCCAGA
GCCTCGCCGCTGCTGTGGGGCCCTGCTCCGAGCACTGGCCACCTGCCATGCCCTCAGCCGGCTCCAG
GACACCCCGTGGGCGACCCCATGGACTGAAGATGGTGGAGTCTACTGGCTGGGTCTGGAGGAAGAGC
CGGCTGCAGACTCAGCATTTGGGACCCAGGTCTTGGCAGTGATGAGACCCCACTTTGGGAGCCCAAGT
GCAGGCAATGGAGGAGCCCCGGTGCCAGTCAGCGTCTCCACCCTTCCCTTCTCTTCGGCTCTGCAG
TGGTGGCAGGGCTCTGCAACCCGAGACAGTGCCACCGACTTCGCCCAGATGCTGCAGAGCTATACAGC
TGCTGGCTACCGTGTCTGGCCCTGGCCAGCAAGCCACTGCCACTGTGCCCAGCCTGGAGGCAGCCAG
CAACTGACGAGGGACTGTGGAAGGAGACCTGAGCCTCTGGGGCTGCTGGTATGAGGAACCTACTGA
AGCCGCAGACAACGCCAGTTATCCAGGCTCTGCGAAGGACCCGCATCCGCGCCGTATGGTACAGGGGA
CAACCTGCAGACAGCGGTGACTGTGGCCCGGGCTGTGGCATGGTGGCCCCCAGGAGCATCTGATCATC
GTCCACGCCACCCACCCTGAGCGGGGTGAGCCTGCCTCTCTCGAGTTCCTGCCGATGGAGTCCCCACAG
CCGTGAATGGCGTTAAGTCTTGGTCCAGGGCACTGTCTTGGCCGCATGGCCCCGAGCAGAAGACAGA
GCTGGTGTGCGAGCTACAGAAGTTCAGTACTGCGTGGGCATGTGCGGAGACGGCCCAATGACTGTGGG
GCCTGAAGGCGGCTGATGTCGGCATCTCGCTGTCCCAGGCAGAAAGCCTCAGTGGTCTCACCTTCACT
CGAGCATGGCCAGTATTGAGTGGTGGCCATGGTATCAGGGAGGGGCGCTGTCCCTTGACACTTCATT
CAGCGTCTTAAGTACATGGCTCTGTACAGCCTGACCCAGTTCATCTCCGTCTGATCCTTACACGATC
AACACCAACCTGGGTGACCTGCAGTTTCTGGCCATCGACCTGGTATCACCACCAGTGGCAGTGTCTCA
TGAGCCGCACGGGGCCAGCGTGGTCTGGGACGGGTGCGGCCACCGGGGGCGTGTCTAGCGTGGCCGT
GCTCAGCAGCCTGCTGCTGCAGATGGTCTGGTACCAGCGTGCAGCTAGGGGGTACTTCTGACCCTG
GCCCAGCCATGGTTCGTGCCTCTGAACAGGACAGTGGCCGACCAGACAACCTGCCAACTACGAGAACA
CGTGGTCTTCTCTGTCCAGTTCAGTACCTCATCCTGGTGCAGCCGTGTCCAAGGGGGCGCCCTT
CCGCCGGCCGCTTACACCAATGAGCGTGCTAGACCAGTGCCTCCCCGCCTGCCTGCGCCGCTCCGGCC
CAAGCGGGCCTCAAGAAGCGCTTCAAGCAGCTGGAACGAGAGCTGGCCGAGCAGCCTGGCCGCCGCTG
CCCGCCGGCCCCCTGAGGTAGTGCAGGCCACGGGCACCCAGACTGGAACCTCCCTGCCTCTGAGCCA
CCAACCTGGACCCCTCTCCAGCAACACCACCGCCACCCTCCACATCCCTGAGGTTGGCGACTGTCTAC
ACTCCTCCCCGAGACCACCCCACTGGGGAAGCGTTGACTACTGTCCCCTACCTGGACCATCCCGC
GTAGGGGTGGCAGCCCCAGTCCCCTCAGTGTCTGCTGTCAGT

ACGCGTACGCGGCCGCTCGAG – GFP Tag – GTTTAA

Protein Sequence: >RG227980 representing NM_001141974
 Red=Cloning site Green=Tags(s)

```

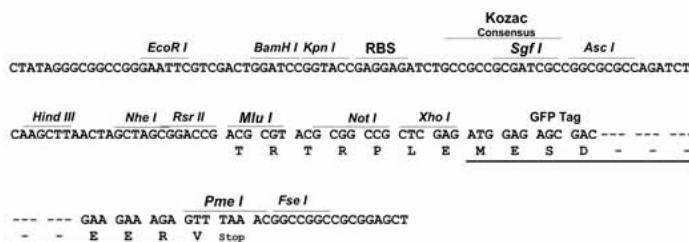
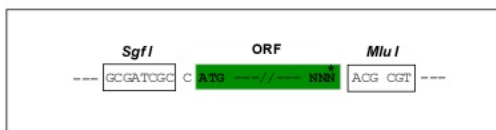
MSADSSPLVGSTPTGYGTLTIGTIDPLSSSVSSVRLSGYCGSPWRVIGYHVVVMMAGIPLLLFRWKPL
WGVRLRLRPCNLAHAETLVIEIRDKEDSSWQLFTVQVQTEAIGESLEPSQSQAEDGRSQAAVGAVPEG
AWKDTAQLHKSEEAKRVLRYLFGQRYIWIETQQAFYQVSLLDHGRSCDDVHRSRHGLSLQDMVRKAI
YGPNVISIPVKSYPLLVEALNPYYGFQAFSIALWLDHYWYALCIFLISSISICLSLYKTRKQSOTL
RDMVKLSMRVCVCRPGGEEWVDSSELVPGDCLVLPREGGLMPCDAALVAGECMVNESSLTGESIPVLKT
ALPEGLGPYCAETHRRHTLFCGTLILQARAYVGPVLAHVTRTGFCTAKGGLVSSILHPRPINFKFKHS
MKFVAALSVLALLGTIYSIFILYRNRVPLNEIVIRALDLVTVVPPALPAAMTVCTLYAQSLRRQGIFC
IHPLRINLGGKLQLVCFDKTGTLTEDGLDVMGVVPLKQQAFLPLVPEPRRLPVGPLLALATCHALSRLQ
DTPVGDPMCLKMVESTGWVLEEEPAADSAFGTQVLAVMRPPLWEPQLQAMEEPPVSVLHRFPSSALQ
RMSVVVAVPGATQPEAYVKGSPELVAGLCNPETVPTDFAQMLQSYTAAGYRVVALASKPLPTVPSLEAAQ
QLTRDTVEGDLSELLVMRNLKPKQTPVIQALRRTRIRAVMVTGDNLQTAVTVARGCGMVAPQEHLII
VHATHPERGQPASLEFLPMESPTAVNGVKVLVQGTVFARMAPEQKTELVCELQKLQYCVGMCGDGANDCG
ALKAADVGISLSQAEASVSPFTSSMASIECPMVIIEGRCSLDTFSVFKYMALYSLTQFISVLILYTI
NTNLGDLQFLAIDLVITTTAVLMSRTGPALVLRVRPPGALLSVPVLSLLLQMLVTVGVLGGYFLTL
AQPFVPLNRTVAAPDNLPNYENTVVFSLSSFQYLILAAAVSKGAPFRRPLYTNERARVPPRLPAPPPA
QAGLQEALQAAGTRAGRAALAAAARRPPEVVQAHGHPRHWSLPLSHQLDPSATPPPPPTSLRLATVY
TPPPRPPPPWGSVDYCPWPWTIPRRGGSPQLPSVLLSV
  
```

TRTRPLE - GFP Tag - V

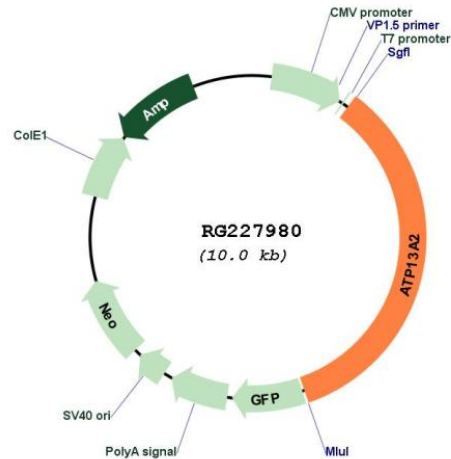
Restriction Sites: SgfI-MluI

Cloning Scheme:

Cloning sites used for ORF Shuttling:



Plasmid Map:



ACCN: NM_001141974

ORF Size: 3474 bp

OTI Disclaimer: The molecular sequence of this clone aligns with the gene accession number as a point of reference only. However, individual transcript sequences of the same gene can differ through naturally occurring variations (e.g. polymorphisms), each with its own valid existence. This clone is substantially in agreement with the reference, but a complete review of all prevailing variants is recommended prior to use. [More info](#)

OTI Annotation: This clone was engineered to express the complete ORF with an expression tag. Expression varies depending on the nature of the gene.

Components: The ORF clone is ion-exchange column purified and shipped in a 2D barcoded Matrix tube containing 10ug of transfection-ready, dried plasmid DNA (reconstitute with 100 ul of water).

Reconstitution Method:

1. Centrifuge at 5,000xg for 5min.
2. Carefully open the tube and add 100ul of sterile water to dissolve the DNA.
3. Close the tube and incubate for 10 minutes at room temperature.
4. Briefly vortex the tube and then do a quick spin (less than 5000xg) to concentrate the liquid at the bottom.
5. Store the suspended plasmid at -20°C. The DNA is stable for at least one year from date of shipping when stored at -20°C.

RefSeq: [NM_001141974.1](#), [NP_001135446.1](#)

RefSeq Size: 3694 bp

RefSeq ORF: 3477 bp

Locus ID: 23400

UniProt ID: [Q9NQ11](#)

Cytogenetics: 1p36.13

Protein Families: Transmembrane

Gene Summary: This gene encodes a member of the P5 subfamily of ATPases which transports inorganic cations as well as other substrates. Mutations in this gene are associated with Kufor-Rakeb syndrome (KRS), also referred to as Parkinson disease 9. Multiple transcript variants encoding different isoforms have been found for this gene.[provided by RefSeq, Nov 2008]