

Product datasheet for **RG227977**

EPB4IL2 (EPB41L2) (NM_001135555) Human Tagged ORF Clone

Product data:

Product Type:	Expression Plasmids
Product Name:	EPB4IL2 (EPB41L2) (NM_001135555) Human Tagged ORF Clone
Tag:	TurboGFP
Symbol:	EPB41L2
Synonyms:	4.1-G; 4.1G
Mammalian Cell Selection:	Neomycin
Vector:	pCMV6-AC-GFP (PS100010)
E. coli Selection:	Ampicillin (100 ug/mL)



[View online »](#)

ORF Nucleotide Sequence:

>RG227977 representing NM_001135555
 Red=Cloning site Blue=ORF Green=Tags(s)

TTTTGTAATACGACTCACTATAGGGCGGCCGGAATTCGTCGACTGGATCCGGTACCGAGGAGATCTGCC
 GCC**CGCATCGCC**

ATGACTACTGAAGTAGGCTCTGTGTCTGAAGTGAAGAAGGACTCTAGCCAGTTAGGAACAGATGCAACCA
 AGGAAAAACCTAAAGAAGTAGCAGAAAAATCAGCAGAATCAGTCTTCCGATCCAGAGGAGGAAAAAGGTTCC
 CCAGCCACCTCCTGCAGCTGAAAGCCAAAAGTAGTCTACGCCGCCAGAAGAGAGAGAAGGAAACATCGGAG
 AGCAGGGGTATTTCTCGTTTCATACCGCCATGGCTTAAGAAGCAAAAGTCATATACCTTAGTAGTGGCCA
 AAGATGGAGGAGATAAAAAAGAGCCTACCCAAGCTGTTGTTGAAGAACAGGTCTTAGATAAAGAGGAACC
 CCTTCCAGAAGAACAGAGACAGGCTAAGGGTGTGCTGAAGAAATGGCTCAGAAGAAACAAGAGATTAAA
 GTTGAAGTCAAGGAAGAAAAACCTCAGTGAGCAAGGAAGAAAAACCTCAGTGAGCAAAGTGGAGATGC
 AGCCTACTGAATTAGTAAGTAAAGAGAGAGAAGAGAAGGTAAGAAACACAGGAAGACAAATTAGAAGG
 AGGAGCAGCAAAAAGGGAGACCAAGGAAGTGCAGACCAATGAGCTGAAAGCAGAGAAGGCATCTCAAAAA
 GTCACCAAGAAGACCAAAACTGTCCAGTGTAAAGTGACCTCTTAGATGGCACCGAATACAGCTGTGACC
 TGGAGAAACATGCCAAGGACAAGTGTATTGACAAAAGTGTGTGAACACCTCAATCTCTTGGAGAAAGA
 CTACTTTGGACTTTTGTTCAGGAAAGCCCTGAGCAGAAAAACTGGTTAGATCCTGCTAAAGAAATAAAG
 AGACAACCTGAGAAACCTTCCATGGCTATTCACCTTTAATGTGAAGTTTTATCCTCCTGATCCTTCTCAAT
 TGACTGAAGATATCACCAGATACTTCTGTGCCTTCAGCTCCGGCAGGACATTGCCTCTGGCCGCCTGCC
 CTGCTCTTTGTGACTCATGCTCTCCTGGGATCCTACACCCTGCAGGCTGAACCTGGTGAATGACCCA
 GAAGAACATGGCAGCATCGACCTCAGTGAATCCAGTTTGCCCTACTCAGACTAAGGAGCTGGAAGAGA
 AGGTGGCAGAGCTGCACAAAACCCACAGGGGCTTATCGCCAGCACAAGCTGATTTCCAGTTCTTAGAAAA
 TGCAAAGAGGCTTCCATGTATGGTGTGACCTACATCATGCCAAGGACTCAGAAGGTGTGGACATCAAG
 CTGGGCGTGTGTGCTAATGGACTTCTCATTACAAAGACAGACTGCGAATCAATCGTTTTGCTTGGCCGA
 AAATCTTAAAAATTTCTATAAACCGCAGTAACCTTACATTAAGTCAAGCCGGCAGAGCTGGAACAGTT
 TGAGAGTACCATTGGATTCAAACGCCAAACCACCGGGCAGCGAAAAGACTATGGAAAGTGTGCGTGGAG
 CATCATACTTTCTACAGGCTTGTTCCTCCAGAGCAGCCACCAAAAGCCAAGTTCTGACCTTGGGGTCCA
 AATTTTCGCTATAGTGGCCGACCCAAGCACAGACCCGCCAGGCCAGCACCCCTCATAGATAGGCCAGCACC
 ACACCTTTGAGCGCACTTCTAGTAAACGGGTCTCCAGGAGTCTAGATGGAGCTCCGATTGGTGTGATGGAC
 CAAAGTCTTATGAAGATTTTCTGGCGTGTGTTGGGAGATTTGAGCCTATGGACCTGGACTTGTGAGCA
 TTGCCGTGGTACAAGATGGGGACGGCAGGAGGGAAGTGAAGCCCAACTAAAGCCCACATTTGCAGCT
 CATTGAAGGAAAGACTGTAAAAGGTGGAATTTCTGAAACAAGAATTGAGAAACGCATTGTGATCACAGGA
 GATGGAGATATTGATCATGACCAGGCACTGGCTCAGGCGATCAGGGAAGCCAGAGAGCAGCACCCCTGACA
 TGTCGGTCAACAAGAGTGGTGGTACACAAAGAAACAGAGTTGGCTGAGGAAGGGGAAGT

ACGCGTACGCGGGCCGCTCGAG - GFP Tag - GTTTAA

Protein Sequence: >RG227977 representing NM_001135555
 Red=Cloning site Green=Tags(s)

MTTEVGSVSEVKKDSSQLGTDATKEPKPEVAENQQNQSSDPEEEKGSQPPPAESQSSLRQKREKETSE
 SRGISRFIPPWLKKQSYTLVAKDGGDKKEPTQAVVEEQVLDKEEPLPEEQRAKGDAAEMAQKKQEIK
 VEVKKEKPSVSKKEKPSVSKVEMQPTLVSKEREKVKETQEDKLEGGAAKRETKEVQTNELKAEKASQK
 VTKKTKTVQCKVTLLDGTEYSCDLEKHAKGOVLFDKVCEHLNLLLEKDYFGLLFQESPEQKNWLDPAKEIK
 RQLRNLFWLFTFNVKFYPPDPSQLTEDITRYFLCLQLRQDIASGRLPSCFVTHALLGSYTLQAEELGDYDP
 EEHGSIDLSEFQFAPTQTKLEEKVAELHKTHRGLSPAQADSQFLENAKRLSMYGVDLHHAADSEGVDIK
 LGVCANGLLIYKDRLRINRFAWPKILKISYKRSNFYIKVRPAELEQFESTIGFKLPNHRAAKRLWKVCVE
 HHTFYRLVSPEQPPKAKFLTGSKFRYSGRTQAQTRQASTLIDRPAPHFERTSSKRVSRLDGAPIGVMD
 QSLMKDFPGAAGEISAYGPGLVSI AVVQDGDGRREVRSPTKAPHLQLIEGKTVKGGISETRIEKRIVITG
 DGDIDHDQALAQAIAREAREQHPDMSVTRVVVHKETELAEEGED

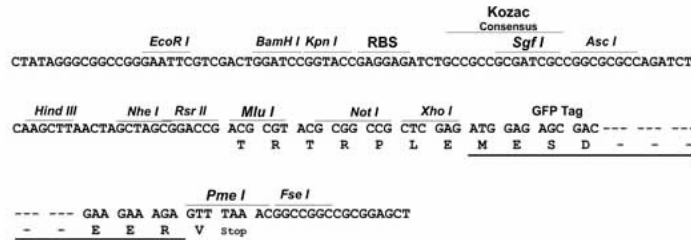
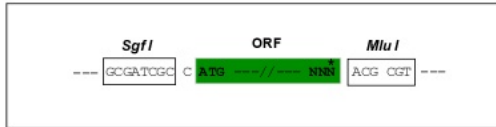
TRTRPLE - GFP Tag - V

Restriction Sites:

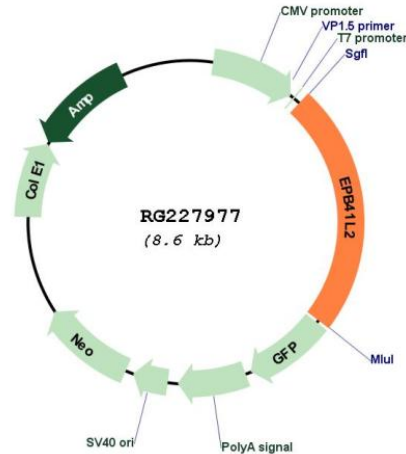
Sgfl-MluI

Cloning Scheme:

Cloning sites used for ORF Shuttling:



Plasmid Map:



ACCN: NM_001135555

ORF Size: 2019 bp

OTI Disclaimer: The molecular sequence of this clone aligns with the gene accession number as a point of reference only. However, individual transcript sequences of the same gene can differ through naturally occurring variations (e.g. polymorphisms), each with its own valid existence. This clone is substantially in agreement with the reference, but a complete review of all prevailing variants is recommended prior to use. [More info](#)

OTI Annotation: This clone was engineered to express the complete ORF with an expression tag. Expression varies depending on the nature of the gene.

Components: The ORF clone is ion-exchange column purified and shipped in a 2D barcoded Matrix tube containing 10ug of transfection-ready, dried plasmid DNA (reconstitute with 100 ul of water).

Reconstitution Method:

1. Centrifuge at 5,000xg for 5min.
2. Carefully open the tube and add 100ul of sterile water to dissolve the DNA.
3. Close the tube and incubate for 10 minutes at room temperature.
4. Briefly vortex the tube and then do a quick spin (less than 5000xg) to concentrate the liquid at the bottom.
5. Store the suspended plasmid at -20°C. The DNA is stable for at least one year from date of shipping when stored at -20°C.

RefSeq: [NM_001135555.3](#), [NP_001129027.1](#)

RefSeq Size:	3486 bp
RefSeq ORF:	2022 bp
Locus ID:	2037
UniProt ID:	O43491
Cytogenetics:	6q23.1-q23.2
Protein Pathways:	Tight junction
Gene Summary:	Required for dynein-dynactin complex and NUMA1 recruitment at the mitotic cell cortex during anaphase (PubMed:23870127).[UniProtKB/Swiss-Prot Function]