

## Product datasheet for **RG227959**

### SPHKAP (NM\_001142644) Human Tagged ORF Clone

#### Product data:

Product Type:	Expression Plasmids
Product Name:	SPHKAP (NM_001142644) Human Tagged ORF Clone
Tag:	TurboGFP
Symbol:	SPHKAP
Synonyms:	SKIP
Mammalian Cell Selection:	Neomycin
Vector:	pCMV6-AC-GFP (PS100010)
E. coli Selection:	Ampicillin (100 ug/mL)
ORF Nucleotide Sequence:	>RG227959 representing NM_001142644 Red=Cloning site Blue=ORF Green=Tags(s)

TTTTGTAATACGACTCACTATAGGGCGGCCGGAATTCGTCGACTGGATCCGGTACCGAGGAGATCTGCC  
GCC**CGATCGCC**

ATGGATGGCAACTCCCTGCTCTCGGTACCAAGCAACTTGGAGTCATCACGGATGTATGACGTTTTGGAAC  
CGCAGCAGGGCAGAGGCTGTGGCAGCTCAGGAAGCGGCCCGGGAATCCATCACAGCCTGTAAGAAGGT  
TCTTCGCAGCAATAGCCTGCTGGAGTCAACAGACTACTGGTTGCAGAATCAGAGGATGCCCTGCCAATT  
GGTTTTGTAGAAGACAAGTCTGAAAACGTGCTTCTGTCTGCTTTGTGAATCTTGATGTGAACAAGGATG  
AATGCAGCACAGAGCACCTGCAACAGAACTGGTCAACGTTTCACCAGATCTTCCAAAATATCAGTTC  
CATGAATGTCCAACAACCAAGAAAATGAAATGTTGTCTTAAGTGGGTAGCCTCTGGAAATCTCCAG  
GCAGATTTTGAAGTTTCAGAGTCCCTGGCTGCCAGATATCTGCTTGGTCCAATGTGCAAGAGGGAACA  
GACCAACAGTACCAACTGCATCATCTTTGAAATCAACAAATTTCTGATTGGTCTGGAATGGTGCAGGA  
GCGACAGCTCCACCTGGAACAAACATCTTGAACCTGGAGGATGACACGAACTGTTCTTATCTTCAATC  
GAGGAAGACTTTCTCACCCTTCTGAGCACTTGGAGGAGGAAAGCGAGGTGGATGAATCTAGGAACGATT  
ATGAAAATATAAATGTCTCAGCCAATGTTTTGAAAAGTAAACAGCTAAAGGGAGCCACCCAGGTGGAATG  
GAATTGCAACAAGGAAAAGTGGCTTTATGCTTTGGAAGACAAATACATCAACAAATATCCACACCATTTG  
ATTAACAAGACGATCTCCAGAAAACCTAACAAAGAACACAGCCTTGCAGAGTCTAGATCCCTCAGCCA  
AGCCATCACAGTGGAAAAGAGAAGCTGTGGGGAATGGGAGACAAGCCACACATTATTATCATTAGAAAGC  
TTTTAAAGGTCAAATGGAATAATCACAGGCACTGTATATTCCAAAAGATGCTTATTTCTCCATGATGGAT  
AAAGATGTACCTTCTGCATGTGCTGTGGCAGAGCAGAGAAGCAACCTAAACCCAGGAGACCATGAAGACA  
CAAGAAACGCTCTCCCTCCTAGACAAGATGGAGAAGTCAACACTGGCAAGTATGCTACAAATTTAGCAGA  
ATCCGTGCTGCAGGATGCATTTATTAGATTATCTCAATCTCAGTCCACATTACCCAGGAATCTGCAGTC  
AGTGTCTGTAGGAAGTCTCTGCTTCCCAGTTGCTATTCCACAAAAGATACAGTGGTTTCTCGGTCAT  
GGAATGAGCTCCCAAAATCGTCGTTGTTTCAGAGTCCAGATGGCAGTGATGCTGCCCCACAGCCAGGCAT  
CTCCTCCTGGCCTGAGATGGAAGTCTCTGTTGAAACCTCAAGCATCTCTCTGGAGAGAACTCCAGCAGA



[View online >](#)

CAACCCAGAGTCTAGAAAGTGGCGTTAGCTTGTGCAGCCACTGTGATTGGAACATTTCCAGTCCAC  
 AGGCCACAGAAAGACTCAAAATGGAGCAAGTGGTCTCGAACTTTCCCCAGGGAGCAGTGGTGCAGTGC  
 AACTCAAGCACCCCAAGGACTCAAGGAACCTTCCATCAATGAGTACTCCTTTCCATCTGCTTTGTGTGGC  
 ATGACTCAGGTGGCCAGTGCCGTGGTGTCTGTGGTCTGGGTGAAAGAGAAGAGGTGACATGCTCAGTGG  
 CTCCAAGTGGTAGCCTCCCGCTGCAGCTGAGGCTTCTGAAGCCATGCCCCACTTTGTGGTTTAGCAAG  
 CATGGAGCTTGGCAAGGAAGCCATTGCCAAGGGATTGCTCAAGGAGGCTGCTCTGGTTTTAAACAAGCCCT  
 AATACCTACAGCAGCATTGGAGACTTTCTGGACTCCATGAACAGGAGAATCATGGAACTGCTTCAAAGT  
 CTCAGACCCTGTGCTCAGAAAATGTCGTAGGAATGAAGTGGCACATACCCTGTCCAATGTTATCCTGAG  
 GCATTCCATTGATGAAGTTCACCAAAAAATATGATAATCGACCCCAATGACAACAGGCATTTCATCTGAA  
 ATTCTGGACACCTTAATGGAAAGTACAAAATCAACTGCTTTTAGATGTGATATGCTTCACGTTCAAGAAGA  
 TGAGTCATATTGTACGGCTTGGTGAATGTCCTGCTGCTTTCTAAGGAGACCATCAGAAGGAGGGAGAC  
 AGAACCAAGTGCAGCCATCTGATCCGGGTGCTAGTCAAGCTTGGACAAAAGCCACTGAATCCTCCAGC  
 AGCTCTCCACTTAGCAATTCACACAACACGAGTCTTGTCAACAATCTTGTGGATGGCATGTATTCAA  
 AACAAAGACAAGGGTGGAGTGAGGCCAGGCCTTCAAGAACCCACGCTGCAGTCACAATATACAGTAG  
 TCACAGAGTGCCCGATTCTTCAACTGCTACAACATCCTCCAAGGAAATATATCTGAAAGGAATAGCAGGA  
 GAGGATACAAAAAGCCCTCATCAGAGTGAAGTGAATGCAGAGCCTCTCCGAAGGACAAAAGTCCCCAA  
 CGGTGAGCCAGTCCAGAAGTGGTCCCAGGAGGCTGAGGAGAGTATCCACCCAAACCCAAAGAAAAGTA  
 CAACTGTGCCACATCTCGCATCAACGAAGTTCAAGTCAACCTGTCTTGTAGGGGATGACCTGTGCTT  
 CCTGCTCAATCCACGCTTCAAACAAAGCATCCAGACATCTACTGCATTACAGACTTTGCGGAAGAATTAG  
 CAGACACGGTCTGCTCCATGGCAACTGAAATGTCAGCGATTTGCCTTGACAACCTCAGTGGAAAACAACC  
 CTGGTTTTGTGCATGGAAAAGAGGGAGTGAGTTTCTGTGACACCAACGTACCCTGCCGATCCTTGAAG  
 AGGAAGAAGAGAGCCAGGGGAGCGGGACCGCTGTGAGGAAACAAGCCCTCCCGGCTCAGTGAATGAA  
 AGAGAAAGACGGACGACACCTGAGCTTAAAGAAAAGCTGATGAACAGGGTTGTGGATGAGTCCATGAA  
 CCTTGAAGATGTCCAGATTCTGTCAATCTTTTGGCAATGAAGTGGCAGCCAAGATCATGAACCTAACG  
 GAGTTCTCTATGGTGGACGGCATGTGGCAGGCGCAGGGCTATCCCGGAATCGGTTACTGAGTGGCGACA  
 GGTGGAGCCGGCTGAAGGCCTCCAGCTGCGAAAGCATTCTGAGGAAGACTCCGAGGCCAGGGCCTATGT  
 CAACAGCCTGGGCTTAATGAGCACGCTGAGCCAGCCGGTCCAGCAGGGCCAGCTCTGTCTCCAAGCAGTGC  
 AGCTGTGAGAGCATCACCGATGAGTTTTCCAGGTTTATGGTGAACCAGATGGAAAATGAAGGAGAGGAT  
 TTGAGTTACTGCTGGATTACTATGCTGGCAAGAACGCCAGCAGCATTCTGAACTCAGCCATGCAACAGGC  
 GTGCCGAAAAGTGACCACCTCAGTGTGAGGCCTAGCTGTCCCTAAGCAGTCCAGCACAGAGAGCATC  
 ACTGAGGAGTTTACAGGTACATGCTGAGGGACATCGAAAAGAGACAGCAGAGAAAGTGCCTCCTCCAGAC  
 GGAGCAGCCAGGATTGGACAGCCGGCCTGCTGTCTCCTTCTGCGATCCCCAGTGTGCCACAGACAGTGC  
 GTCCATGCCAGACAGCAGATCCCCATGTCCAGGCTGACAGTGAATGTGCCCATCAAAGCCAACTCTTTA  
 GATGGCTTTGCTCAGAACTGCCCACAAGATTTCTAAGCGTGCAGCCGGTCCAGTGCAGCGTCTCATCCG  
 GTCTCTGCAAACTGACTCTTGTGTATCGGAGAGGTGGGACTGACCACATCACCAACATGTTAATTCA  
 TGAAACGTGGGCTAGCTCCATTGAGGCTCTCATGCGCAAGAACAATAATTGTGGATGATGCAGAGGAA  
 GCTGACACTGAGCCTGTTTCTGGTGGCTCTCCCTCGCAAGCAGAGAAGTGTGCAAAATAGATTAGCTGCGA  
 GCAGGATGTGCAGTGGGCCAACTCTGCTTGTTCAGGAGTCTCTGATTGCCCGAGGAAAGACTCTGTTAC  
 CGAATGTAACAGCCCCCAGTGTATCTTTGAGCAAAACTGCTTCTTACAACCACAGCCCTTTAGAT  
 TCTAAAAAAGAAACTTCCCTCGTGCCAGGACCCTGTACCAATAAACCCACAAAAGGGGATCACTTTGCTCGA  
 GGGAAAGTGCCTTTGATTAGATTGAAACAGATCAGAGAGAAGCCTGTGCTGGGGAACCTGAACCCTTCT  
 TTCCAAAAGCAGCCTCCTAGAGGAAGCAGAAGGGCATTGCAATGACAAAAACATCCAGATGTGGTGA  
 GGTGGAGACACAGCCGTGAGCGTTGTCAAATCCATAGTGACAGCCTTGATACCAGAGATGTACCAGAGG  
 CTGAAGCCTCCACAGAAGCCAGAGCCCCGATGAGGCCCCCAACCCTCCAAGCAGCAGCGAGGAGAGCAC  
 AGGCAGCTGGACCAGCTTGCCAATGAGGAAGACAACCCAGATGACACAAGTAGCTTTCTCCAGCTCAGT  
 GAGCGATCCATGAGCAATGGCAACAGTAGTGCCACTAGCAGTCTTGGCATTATGGATCTGGACATTTATC  
 AGGAAAGCATGCCATCTTCTCCATGATTAATGAATTAGTAGAAGAAAAGAAGATTCTTAAAGGACAGTC  
 AGAAAGCACAGAGGCACCTGCATCTGGACCGCCTACGGGAACAGCCAGCCCCAGAGGAGCCTGCTGGTG  
 ATCAACTTTGACCTGGAGCCAGAGTGTCCAGATGCCGAGCTCCGAGCCACTCTGCAGTGGATAGCTGCCT  
 CTGAACTGGGGATTCCCACCATCTACTTTAAGAAATCTCAGGAAAACAGAATTGAAAAGTTTCTAGATGT  
 CGTGCAGCTGGTTCATCGGAAGTCTGGAAAGTGGGTGATATCTTCCATGCAGTTGTCCAGTACTGCAAA  
 ATGCATGAGGAGCAGAAGGATGGGAGACTGAGTCTTTGACTGGCTCTTGGAACTGGGA

ACGCGTACGCGGCCGCTCGAG - GFP Tag - GTTTAA

**Protein Sequence:**

>RG227959 representing NM\_001142644  
 Red=Cloning site Green=Tags(s)

MDGNSLLSVPSNLESSRMYDVLEPQQGRGCGSSGSGPGNSITACKKVLRSNSLLESTDYWLQNQRMPQCII  
 GFVEDKSENCASVCFVNLVDVNDKDECSTEHLQQKLVNVSPDLPKLISSMNVQQPKENEIVVLSGLASGNLQ  
 ADFEVSQCPWLPDIDLQVCARGNRPNSTNCIIFEINKFLIGLELVQERQLHLETNLIKLEDDTNCSSLSII  
 EEDFLTASEHLEEESEVDESRRNDYENINVSANVLESKQLKGATQVEWNCNKEKWL YALEDKYINKYPTPL  
 IKTERSPENLTKNTALQSLDPSAKPSQWKREAVGNRQATHYHSEAFKGMQEKSQALYIPKDAYFSMMD  
 KDVPACAVAEQRSNLNPGDHEDTRNALPPRQDGEVTTGKYATNLAEVLDQAFIRLSQSQSTLPQESAV  
 SVSVGSSLLPSCYSTKDTVVSRWNELPKIVVVQSPDGSDAAPQPGISSWPEMEVSVETSSILSGENSSR  
 QPQSALEVALACAATVIGTISSPQATERLKMEQVVSNFPPGSSGALQTQAPQGLKEPSINEYSFPAALCG  
 MTQVASAVAVCGLGEREEVTCVAPSGSLPPAAEASEAMPPLCGLASMELGKEAIKGLLKEAALVLRP  
 NTYSSIGDFLDSMNRIMETASKSQTLCSENVVRNELAHTLSNVILRHSIDEVHHKNMIIDPNDNRHSSE  
 ILDTLMESTNQLLLDVICFTFKKMSHIVRLGECPAVL SKETIRRRETEPSCQPSDPGASQAWTKATESS  
 SSPLSNHNTSLVINNLVDGMYSKQDKGGVRPGLFKNPTLQSQLSRSHRVPDSSTATTSSKEIYKGIAG  
 EDTKSPHSENECRASSEQRSPVTSQSRSGSQEAESIHPTQEKYNCATSRINEVQVNL SLLGDDLLL  
 PAQSTLQTKHPDIYCITDFAEELADTVVSMATEIAAICLDNSSGKQPWFCAWKRGEFLMTPNVPCRSLK  
 RKKESQSGTAVRKHKPPRLSEIKRKTDEHPKELKLMNRVVDESMNLEDVPDSVNL FANEVAAKIMNLT  
 EFSMVDGMWQAQGYPRNRLLSGDRWSRLKASSCESIPEEDSEARAYVNSLGLMSTLSQPVSRASSVSKQS  
 SCESITDEF SRFMVNQMENEGRFELLDDYYAGKNASSILNSAMQQACRSDHLSVRPSCPQKSSSTESI  
 TEEFYRYMLRDIERDSRESASSRRSSQDWTAGLLSPLRSPVCHRQSSMPDSRSPCSRLTVNVPIKANSL  
 DGFAQNCPPQDFLSVQPVSSASSSGLCKSDSCLYRRGGTDHITNMLIHETWASSIEALMRKNKIIIVDDAE  
 ADTEPVSGGSPSQAEKCANRLAASRMCSGPTLLVQESLDCPRKDSVTECKQPPVSSLSKTASLTNHSPLD  
 SKKETSSCQDPVPIINHRRSLCSREVPLIQIETDQREACAGEPEPFLSKSSLLEEAEGHSNDKNIPDVVR  
 GGD TAVSACQIHSDSLDRDVP EAEASTEAPDEAPNPPSSSEESTGSWTQLANEEDNPD TSSFLQLS  
 ERSMSNGNSSATSSLGIMDLDIYQESMPSSPMINELVEEKILKGQSESTEAPASGPPTGTASPQRSLLV  
 INFDFLEPCPDALRATLQWIAASELGIPTIYFKKSQENRIEKFLD VVQLVHRKSKWVGDIFHAVVQYCK  
 MHEEQKDGRLSLFDWLELGL

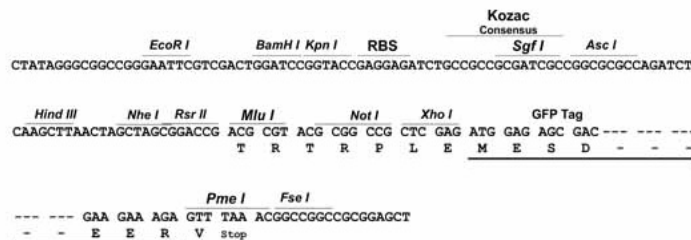
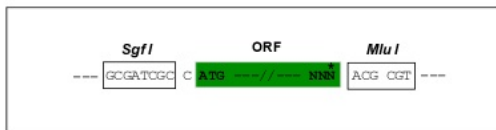
TRTRPLE - GFP Tag - V

**Restriction Sites:**

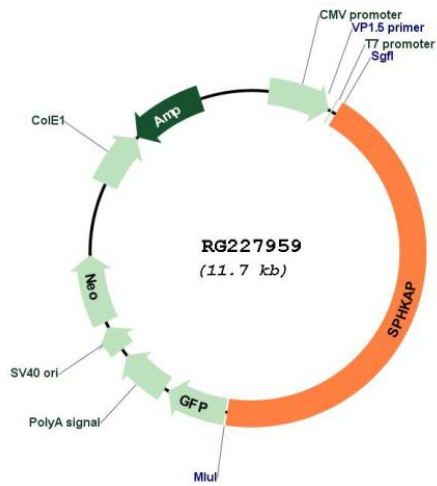
Sgfl-MluI

**Cloning Scheme:**

Cloning sites used for ORF Shuttling:



Plasmid Map:



ACCN: NM\_001142644  
 ORF Size: 5100 bp

<b>OTI Disclaimer:</b>	<p>Due to the inherent nature of this plasmid, standard methods to replicate additional amounts of DNA in E. coli are highly likely to result in mutations and/or rearrangements. Therefore, OriGene does not guarantee the capability to replicate this plasmid DNA. Additional amounts of DNA can be purchased from OriGene with batch-specific, full-sequence verification at a reduced cost. Please contact our customer care team at <a href="mailto:custsupport@origene.com">custsupport@origene.com</a> or by calling 301.340.3188 option 3 for pricing and delivery.</p> <p>The molecular sequence of this clone aligns with the gene accession number as a point of reference only. However, individual transcript sequences of the same gene can differ through naturally occurring variations (e.g. polymorphisms), each with its own valid existence. This clone is substantially in agreement with the reference, but a complete review of all prevailing variants is recommended prior to use. <a href="#">More info</a></p>
<b>OTI Annotation:</b>	<p>This clone was engineered to express the complete ORF with an expression tag. Expression varies depending on the nature of the gene.</p>
<b>Components:</b>	<p>The ORF clone is ion-exchange column purified and shipped in a 2D barcoded Matrix tube containing 10ug of transfection-ready, dried plasmid DNA (reconstitute with 100 ul of water).</p>
<b>Reconstitution Method:</b>	<ol style="list-style-type: none"><li>1. Centrifuge at 5,000xg for 5min.</li><li>2. Carefully open the tube and add 100ul of sterile water to dissolve the DNA.</li><li>3. Close the tube and incubate for 10 minutes at room temperature.</li><li>4. Briefly vortex the tube and then do a quick spin (less than 5000xg) to concentrate the liquid at the bottom.</li><li>5. Store the suspended plasmid at -20°C. The DNA is stable for at least one year from date of shipping when stored at -20°C.</li></ol>
<b>RefSeq:</b>	<a href="#">NM_001142644.2</a>
<b>RefSeq Size:</b>	6913 bp
<b>RefSeq ORF:</b>	5103 bp
<b>Locus ID:</b>	80309
<b>UniProt ID:</b>	<a href="#">Q2M3C7</a>
<b>Cytogenetics:</b>	2q36.3
<b>Protein Families:</b>	Druggable Genome
<b>Gene Summary:</b>	<p>Anchoring protein that binds preferentially to the type I regulatory subunit of c-AMP-dependent protein kinase (PKA type I) and targets it to distinct subcellular compartments. May act as a converging factor linking cAMP and sphingosine signaling pathways. Plays a regulatory role in the modulation of SPHK1.[UniProtKB/Swiss-Prot Function]</p>