

## Product datasheet for **RG227943**

### PTP kappa (PTPRK) (NM\_001135648) Human Tagged ORF Clone

#### Product data:

Product Type:	Expression Plasmids
Product Name:	PTP kappa (PTPRK) (NM_001135648) Human Tagged ORF Clone
Tag:	TurboGFP
Symbol:	PTP kappa
Synonyms:	R-PTP-kappa
Mammalian Cell Selection:	Neomycin
Vector:	pCMV6-AC-GFP (PS100010)
E. coli Selection:	Ampicillin (100 ug/mL)
ORF Nucleotide Sequence:	>RG227943 representing NM_001135648 Red=Cloning site Blue=ORF Green=Tags(s)

TTTTGTAATACGACTCACTATAGGGCGGCCGGGAATTCGTCGACTGGATCCGGTACCGAGGAGATCTGCC  
GCC**CGATCGCC**

ATGGATACGACTGCGGGCGGGCTGCCTGCTTTTGTGGCGCTCTTGCTCCTCTCTCTTGGCCTCTCC  
TGGGATCGGCCCAAGGCCAGTTCTCCGCAGGTGGCTGTACTTTTGTATGATGGTCCAGGGGCTGTGATTA  
CCACCAGGATCTGTATGATGACTTTGAATGGGTGCATGTTAGTGCTCAAGAGCCTCATTATCTACCACCC  
GAGATGCCCAAGTTTCTATATGATAGTGGACTTTCAGATCAGACCCTGGAGAAAAAGCCAGACTTC  
AGCTGCCTACAATGAAGGAGAACGACACTCACTGCATTGATTTACGTTACCTATTATATAGCCAGAAAGG  
ACTGAATCCTGGCACTTTGAACATATTAGTTAGGGTGAATAAAGGACCTCTTGCCAATCCAATTTGGAA  
GTGACTGGATTACGGGTAGAGATTGGCTTCGGGCTGAGCTAGCAGTGAGCACCTTTTGGCCAATGAAT  
ATCAGGTAATATTTGAAGCTGAAGTCTCAGGAGGGAGAAGTGGTTATATTGCCATTGATGACATCCAAGT  
ACTGAGTTATCCTTGTGATAAATCTCCTCATTTCTCCGCTAGGGGATGTAGAGGTGAATGCAGGGCAA  
AACGCTACATTTTCAGTGCATTGCCACAGGGAGAGATGCTGTGCATAACAAGTTATGGCTCCAGAGACGAA  
ATGGAGAAGATATACCAGTAGCCAGACTAAGAACATCAATCATAGAAGTTTGGCGTTCTCTTCAGATT  
GCAAGAAGTGACAAAACTGACCAGGATTTGTATCGCTGTGTAAGTCACTCAGTCAAGACGAGGTTCCGGTGTG  
TCCAATTTTGTCAACTTATTGTGAGAGAACCAGCAAGCCATTGCTCCTCCTCAGCTTCTTGGTGTG  
GGCTACATATTTGCTGATCCAATAAATGCCAACTCGATCATTGGCGATGGTCCATCATCCTGAAAGA  
AGTAGAGTACCGAATGACATCAGGATCCTGGACAGAAACCATGCAAGTCAATGCTCCAACCTTACAATTA  
TGGCATTAGATCCAGATACCGAATATGAGATCCGAGTTCTACTTACAAGACCTGGTGAAGGTGGAACGG  
GGCTCCCAGGACCTCCACTAATCACCAGAACAAAATGTGCAGAACCTATGAGAACCCCAAAGACATTA  
GATTGCTGAAATACAGGCAAGACGGATTGCTGTGGACTGGGAATCCTTGGGTTACAACATTACGCGTTGC  
CACACTTTAATGCTCACTATCTGCTACCATTACTCCGTTGGTCAACAGAGCAAGGCAGACTGTTTGG  
ACATGGACCCCAAAGCCCTCAGCATGTTGTGAACCATCTGCCACCTTATACAAATGTCAGCCTCAAGT  
GATCCTAACCAATCCAGAGGGAAGGAGAGTGAAGAGACAATTATTCAAACTGATGAAGATGTGCC



[View online »](#)

GGTCCCGTACCAGTAAAACTCTTCAAGGAACATCCTTTGAAAATAAGATCTTCTTGAAGTGGAAAGAAC  
CTTTGGATCCAAATGGAATCATCACTCAATATGAGATCAGCTATAGCAGTATAAGATCATTTGATCCTGC  
AGTTCCAGTGGCTGGACCTCCCCAGACTGTATCAAATTTATGGAACAGTACACCCATGTCTTTATGCAT  
CTCCACCCTGGAACCAGTACCAGTTTTTCATAAGAGCCAGCACGGTCAAAGGCTTTGGTCCAGCCACAG  
CCATCAATGTACCACCAATATCTCAGTCCAATTTACCTGACTATGAAGGAGTTGATGCCTCTCTCAA  
TGAAACTGCCACCACAATAACTGTATTGTTGAGACCAGCACAAGCCAAAGGTGCTCTATCAGTGCCTTAT  
CAGATTGTTGTGGAAGAAGTGCACCCACACCCGAACCAAGAGAGAAGCCGGAGCCATGGAATGCTACCAGG  
TTCTGTACATACCAAAATGCCATGAGTGGGGTGCACCGTATTACTTTGCTGCAGAAGTACCCCGGG  
AAACCTACCTGAGCCTGCCCCGTTCACTGTGGGTGACAATCGGACCTACCAAGGCTTTTGAACCCCTCT  
TTGGCTCCGCGCAAAGGATACAACATCTATTTCCAGGCGATGAGCAGTGTGGAGAAGGAACTAAAACCC  
AGTGCCTACGATTGCTACAAAAGCAGCAGCAACAGAAGAACCAGAAGTATCCAGATCCCGCCAAAGCA  
GACAGACAGAGTGGTAAAAAGCAGGAATTAGTGTGGAATTTTGGTGTTCATCCTCTCTCTAGTT  
GTCATATTAATTGTAAGAAAGAGCAAATGCTAAAAACGCAAAGATGCCATGGGGAATACCCGGCAGG  
AGATGACTCACATGGTGAATGCAATGGATCGAAGTTATGCTGATCAGAGCACTCTGCATGCAGAAGATCC  
TCTTTCCATCACCTTCATGGACCAACATAACTTTAGTCCAAGATATGAGAACCACAGTGTACAGCAGAG  
TCCAGTCGCCTTCTAGAGTACCTCGCTACCTCTGTGAGGGGACGGAATCCCTTACCAGACAGGACAGC  
TGCATCCAGCCATCAGGGTAGCTGATTTACTGCAGCACATTAATCTCATGAAGACATCAGACAGCTATGG  
GTTCAAAGAGGAATATGAGAGCTTTTTTGAAGGACAGTCAAGTCTTGGGATGTAGCTAAAAAGATCAA  
AATAGAGCAAAAACCGATATGGAACATTATAGCATATGATCACTCCAGAGTATTTTGAACCCGTAG  
AGGATGATCCTTCTCAGATTATTAATGCCAATATATTGATATTTGGCTGTACAGGGATGGCTACCA  
GAGACCAAGTCAATACATTGCAACCAAGGTCCCGTTCATGAAACAGTGTATGATTTCTGGAGGATGATT  
TGGCAAGAACAATCTGCTTGCATTGTGATGGTTACAAATTTAGTTGAGGTTGGCCGGTAAATGCTATA  
AATATTGGCTGATGATACTGAAGTTTATGGTACTTCAAAGTAACTGTGTAAGAAATGGAACCACTTGC  
TGAATATGTAGTTAGGACATTCACCCTGGAAGGAGGGGTACAATGAAATCCGTGAAGTTAAACAGTTC  
CATTTACGGGCTGACCTGACCATGGAGTGCCCTACCATGCTACAGGGCTGCTTTCTTTTATCCGGCAG  
TCAAGTTATCAAACCTCCAGTGTGGCCCATCGTTGTACATTGCAGTGTGGTGTGGACGAACTGG  
CTGCTACATTGTGATTGACATCATGCTAGACATGGCTGAAAGAGAGGGTGTGTTGATATTTACAATTGT  
GTCAAAGCCTTAAGATCTCGGCGTATTAATATGGTCCAGACAGAGGAACAGTACATTTTTATTATGATG  
CCATTTTAGAAGCCTGCTTATGTGGAGAACTGCCATACCTGTCTGTGAATTTAAAGCTGCATATTTTGA  
TATGATTAGAATAGACTCCAGACTAATCTTACATCTCAAGGATGAATTTAGACTCTGAATTCAGTC  
ACCCCTCGACTACAAGCTGAAGACTGCAGTATAGCGTGCCTGCCAAGGAACCATGACAAGAACCCTTCA  
TGGACATGCTGCCACCTGACAGATGTCTGCCTTTTTTAATTACAATTGATGGGGAGAGCAGTAACTACAT  
CAATGCTGCTCTTATGGACAGCTACAGGCAACCAGCTGCTTTTCATCGTCACACAATACCCTCGCCAAAC  
ACTGTAAGAACTTCTGGAGATTAGTGTATGATTATGGCTGTACCTCATTGTGATGTTAAACGAAGTGC  
ACTTGTCCAGGGCTGCCCTCAGTACTGGCCAGAGGAAGGGATGCTACGATATGGCCCCATCAAGTGG  
ATGTATGCTTGTCAATGGACTGTGATGTGATCAACCGGATTTTTAGGATATGCAATCTAACAAGACCA  
CAGGAAGGTTATCTGATGGTGAACAGTTTCACTACCTAGGATGGGCTTCTCATCGAGAAGTGCCTGGAT  
CCAAAAGGTCATTTGAAACTGATACTCAGGTGGAAGTGGCAGGAGGAATGCGAGGAAGGGGAAGG  
CCGGACGATTATCCACTGCCTAAATGGTGGCGGCGAAGTGGCATGTTCTGTGCTATAGGCATCGTTGTT  
GAAATGGTGAACCGGCAAAATGTTGTCGATGTTTTCCATGCAGTAAAGACTGAGGAACAGCAAGCCAA  
ACATGGTGAAGCCCGGAGCAATACCGTTTCTGCTATGATGTAGCTTTGGAGTACCTGGAATCATCT

AGCGGACCGACGCGTACGCGGCCGCTCGAG - GFP Tag - GTTTAA

**Protein Sequence:** >RG227943 representing NM\_001135648  
 Red=Cloning site Green=Tags(s)

```

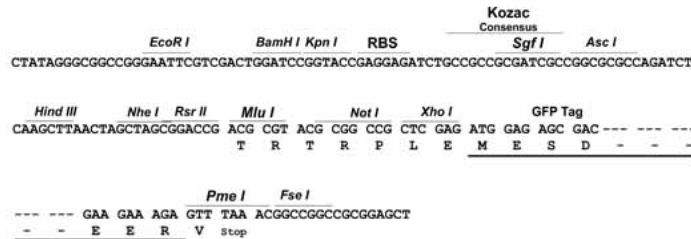
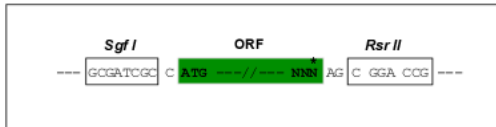
MDTTAAAALPAFVALLLLSPWPLLGSAQQQFSAGGCTFDDGPGACDYHQDLYDDFEWVHVSQAQEPHYLPP
EMPQGSYMIVDSSDHPGEKARLQLPTMKENDTHCIDFSYLLYSQKGLNPGTLNILVRVNGKPLANPIWN
VTGFTGRDWLRAELAVSTFWPNEYQVIFEAEVSGGRSGYIAIDDIQVLSYPCDKSPHFLRLGDVEVNAGQ
NATFQCIATGRDAVHNKLWLQRRNGEDIPVAQTKNINHRRFAASFRLQEVTKTDQDLYRCVTVQSERGSGV
SNFAQLIVREPPRPIAPPQLLGVGPTYLLIQLNANSIIGDGPILKEVEYRMTSGSWTETHAVNAPTYKL
WHLDPDTEYEIRVLLTRPGEGGTGLPGPPLITRTKCAEPMRTPKTLKIAEIQARRIAVDWESLGYNITRC
HTFNVTICYHYFRGHNESKADCLDMDPKAPQHVVNHLPPYTNVSLKMILTNPGRKESEETIIQTDEDVDP
GPVPVKSQGTSEFNKIFLNWKEPLDPNGIITQYEISYSSIRSFDAVPVAGPPQTVSNLWNSTHHVFMH
LHPGTTYQFFIRASTVKGFGPATAINVTNISAPTLPDYEGVDASLNETATTITVLLRPAQAKGAPISAY
QIVVEELHPHRTKREAGAMECYQVPVTVQNAMSGGAPYYFAAELPPGNLPEPAPFTVGDNRTYQGFWNPP
LAPRKGYNIYFQAMSSVEKETKTQCVRIATKAAAATEEPEVIPDPAKQTRVVKIAGISAGILVFIALLLV
VILIVKSKLAKKRKAMDGNTRQEMTHMVNAMDRSYADQSTLHAEDPLSITFMDQHNFSPRYENHSATAE
SSRLLDVPRYLCEGTESPYQTGQLHPAIRVADLLQHINLMKTSDSYGFKEEYESFFEGQSASWDVAKKDQ
NRAKNRYGNIIAYDHSRVLQPVEDDPSSDYINANYIDIWL YRDGYQRP SHYIATQGPVHETVYDFWRMI
WQEQSACIVMVTNLVEVGRVKCYKYPDDTEVYGFVTCVEMEPLAEYVVRTFTLERRGYNEIREVKQF
HFTGWDPDHGVPYHATGLLSFIRRVKLSNPPSAGPIVVHCSAGAGRTGCYIVIDIMDMAEREGVVDIYNC
VKALRSRRINMVQTEEQYIFIHDAILEACLGETAIPVCEFKAA YFDMIRIDSQTNSSHLKDEFQTLNSV
TPRLQAEDCSIACLPRNHDKNRFMDMLPPDRCLPFLITIDGESSNYINAALMDSYRQPAAFIVTQYPLPN
TKVDFWRLVYDYGCTSI VMLNEVDLSQGPCQYWPEEGLMRYGPIQVECMSCSMDCDVINRIFRICNLTRP
QEGYLMVQQFYLGWASHREVPGSKRSFLKILQVEKWQEECEEGERTI IHCLNGGGRSGMFC AIGIVV
EMVKRQNVVDVFHAVKTLRNSKPNMVEAPEQYRF CYDVALEYLESS
  
```

SGPTRRRLE - GFP Tag - V

**Restriction Sites:** SgfI-RsrII

**Cloning Scheme:**

Cloning sites used for ORF Shuttling:



**ACCN:** NM\_001135648  
**ORF Size:** 4338 bp

<b>OTI Disclaimer:</b>	<p>Due to the inherent nature of this plasmid, standard methods to replicate additional amounts of DNA in E. coli are highly likely to result in mutations and/or rearrangements. Therefore, OriGene does not guarantee the capability to replicate this plasmid DNA. Additional amounts of DNA can be purchased from OriGene with batch-specific, full-sequence verification at a reduced cost. Please contact our customer care team at <a href="mailto:custsupport@origene.com">custsupport@origene.com</a> or by calling 301.340.3188 option 3 for pricing and delivery.</p> <p>The molecular sequence of this clone aligns with the gene accession number as a point of reference only. However, individual transcript sequences of the same gene can differ through naturally occurring variations (e.g. polymorphisms), each with its own valid existence. This clone is substantially in agreement with the reference, but a complete review of all prevailing variants is recommended prior to use. <a href="#">More info</a></p>
<b>OTI Annotation:</b>	This clone was engineered to express the complete ORF with an expression tag. Expression varies depending on the nature of the gene.
<b>Components:</b>	The ORF clone is ion-exchange column purified and shipped in a 2D barcoded Matrix tube containing 10ug of transfection-ready, dried plasmid DNA (reconstitute with 100 ul of water).
<b>Reconstitution Method:</b>	<ol style="list-style-type: none"> <li>1. Centrifuge at 5,000xg for 5min.</li> <li>2. Carefully open the tube and add 100ul of sterile water to dissolve the DNA.</li> <li>3. Close the tube and incubate for 10 minutes at room temperature.</li> <li>4. Briefly vortex the tube and then do a quick spin (less than 5000xg) to concentrate the liquid at the bottom.</li> <li>5. Store the suspended plasmid at -20°C. The DNA is stable for at least one year from date of shipping when stored at -20°C.</li> </ol>
<b>RefSeq:</b>	<a href="#">NM_001135648.1</a> , <a href="#">NP_001129120.1</a>
<b>RefSeq Size:</b>	6173 bp
<b>RefSeq ORF:</b>	4341 bp
<b>Locus ID:</b>	5796
<b>UniProt ID:</b>	<a href="#">Q15262</a>
<b>Cytogenetics:</b>	6q22.33
<b>Protein Families:</b>	Druggable Genome, Phosphatase, Transmembrane

