

## Product datasheet for **RG227935**

### **ZNF534 (NM\_001143938) Human Tagged ORF Clone**

#### **Product data:**

Product Type:	Expression Plasmids
Product Name:	ZNF534 (NM_001143938) Human Tagged ORF Clone
Tag:	TurboGFP
Symbol:	ZNF534
Synonyms:	KRBO3
Mammalian Cell Selection:	Neomycin
Vector:	pCMV6-AC-GFP (PS100010)
E. coli Selection:	Ampicillin (100 ug/mL)



[View online »](#)

ORF Nucleotide  
Sequence:

>NM\_001143938 ORF sequence, RG227935 may differ due to SNPs.  
Blue=ORF Red=Cloning site Green=Tag(s)

```
GCTCGTTTAGTGAACCGTCAGAATTTTGTAAACGACTCACTATAGGGCGGCCGGGAATTCGTGACTG
GATCCGGTACCGAGGAGATCTGCCGCCACGATCGCC
ATGGCCCTTACTCAGGGCAATTGTCATTACAGCGATGTGGCCATAGAATTCCTCAGGAGGAGTGAAAA
TGCCCTGGACCCTGGGCAGAAAGCTTTATACAGGGACGTGATGTTAGAGAACTACAGGAACCTGGTCTCC
CTAGGAATCTGTCTTCTGACCTGAGTGTACCTCCATGTTGGAGCAAAAGAGAGATCCCTGGACTCTG
CAGAGTGAAGTAAAAATAATAACAATCCAGATGGCAGGGAGTGATCAAAGGTGTGAACACAGAGAAG
AGTTCTAAATTGGGAAGCAGTGCAGAAACAAGTCACTTAAAAATCAACATGGATTAACCTTTCAGTTA
CATCTGACTGAATGGCAGCCATTTCAAGCTGTAAGGAATATTTATGGATGAAGCATGTTGAGAAATCT
ATCAGTGACAATTCCTCAGTTTACCAGTTCAAAATAAGTTTTTTCAGTGTCAAACCCATATTTTTAAT
AACTACAGAAATGATTTTCTTTTTCTACACTCCACAAGAACAGAAAGTACACATTAGGGAAAAG
CCTTATGGATGTAATGAGCATGGGAAAGTCTTCAGAGTGTCTTCAAGCCTTACTAACCGTCAAGTAATC
CACATTGCAGATAAACTTACAAATGTAGTGACTGTGGCGAGATCTTTAGTAGCAATTCAACTTTGCA
CAACATCAACGAATCCATACTGGAGAGAAGCCTTACAAATATAATGAATGTGGCAAAGTCTTCAATCAG
AATTCACACCTTGCAACAATCAGAAAATTCATACTGGACAGAAAACCTTACAATAACAAAGAATGTGGG
AAAGTCTTTAGTACCATGCCTACCTTGACAGCATAGGAAAATTCATACTGGAGAGAAGCCTTACAAA
TGTAAGTGAATGTGGCAAAGCATTAGTGTGTGTTCCAGTCTTACTGCTCATCTTGTAAATCCATACTGGA
GAGAAACCTTATGATTGTAAGGAATGTGGCAAGTCTTCAGGCATAAGTCTTCCCTAACCACTCATCAG
ACAGTTCATACTGGAGAGAGACCATACAAATGTAATGAATGTGGCAAGGGTTTAGTCGAATTGCATTC
CTTGCAAGGCATCGGAAAGTTCATACTGGAGAGAAAACCTTACAAATGTAATGAGTGTGGCAAGTCTTT
ATTGGCAATTCACGCCTTGACAGCATAGGAAAATTCATACTGGGGGGAGGCGTTACAAATGTAATGAA
TGTGGCAAAGCATTAGAACGTGTTAGATCTCACTGCCATCTTCTAATCCATACTGGAGAGAAAACCT
TACGAATGTATAGACTGTGGCAAGTCTTCAGGCACAAGTCTTCCCTAACCTATCACTGTAGAATTCAT
ACTGGAGAGAAGCCTTACAAATGTAACGAATGTGGCAAGTCTTCAGTCAAGATTCAAACCTTCAACGA
CATAGGAAAATTCATACTGGAGAGAAGCCTTACAAATGTAATGAATGTGGCAAGTCTTCCGTCAGAA
TCACACCTTGCAACAATAGGGATTCATACTGGAGAGAAGCCTTACAGTTGTAATGAATGTGGCAAG
GTCTTCCGTCGGAATTCACACCTTGTGCGACATAGGAATGTTCACTGGAGAAAAGCCTTACAGTTGT
AATGAATGTGGCAAGTCTTCAGTCGGAATTCACACCTTGCAGCATAGGAATTCATACTGGAGAG
AAGCCTCACAGTTGTAATGAATGTGGCAAGTCTTCAGTCGGAATTCACACCTTGCAGCATAGGAAA
ATTCATACTGGAGAGAAGCCTTACAAATGTAATGAATGTAGCAAGTCTTCAGTCGGAATTCACGCCTT
GCACAACATAGGAATTCATACTGGAGTGAAGCCTTACAGTTGTAATGAATGTGGCAAGTCTTTAGT
AAAAATTCATCCTAGTACAACATTGCAGTATTCATACCAGAGAGAAGCCT
ACGCGTACGCGGCCGCTCGAG - GFP Tag - GTTTAAAC
```

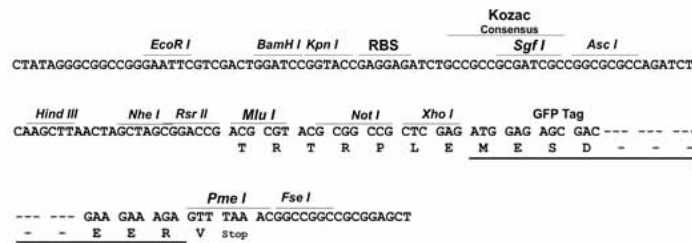
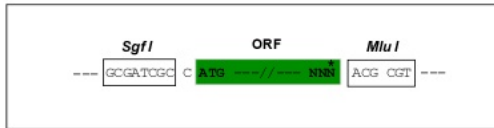
**Protein Sequence:** >Peptide sequence encoded by RG227935  
 Blue=ORF Red=Cloning site Green=Tag(s)

MALTQGQLSFSVAIEFSQEEWKCLDPGQKALYRDVMLENYRNLVSLGICLPDLSVTSMLEQKRDPTWL  
 QSEVKIINNPDGRECIKGVNTEKSSKLGSSAGNKSLKNQHGLTLQLHLTEWQPFQAVRNIYGCKHVEKS  
 ISDNSSVSPVQISFFSVKTHIFNNYRNDFLFSTLLPQEQQVHIREKPYGCNEHGKVFVRSSSLTNRQVI  
 HIADKTYKSDCGEIFSNSNFAQHQRHTGEKPYKYNECGKVFVNQNSHLAQHQKIHTGQKPYNNKECG  
 KVFSHHAYLAQHRKIHTGEKPYKCECGKAFSVCSSLTAHLVIHTGEKPYDCECGKVFVRHKSSLTHQ  
 TVHTGERPYKCECGKGFRIAFLARHRKVHTGEKPYKCECGKVFIGNSRLARHRKIHTGRRYKCE  
 CGKAFRTCSDLTAHLLIHTGEKPYECIDCGKVFVRHKSSLTYHCRHTGEKPYKCECGKVFVSNLQR  
 HRKIHTGEKLYKCECGKVFVRQNSHLAQHRDIHTGEKPYSCNECGKVFRRNSHLVRHRNVHTGEKPYSC  
 NECGKVFVRNSHLARHRNIHTGEKPHSCNECGKVFVRNSHLARHRKIHTGEKLYKCECKVFSRNSRL  
 AQHRNIHTGVKPYSCNECGKVFVSKNSILVQHCSIHTREKP  
 TRTRPLEMESDEGLPAMEIECRITGTLNGVEFELVGGGEGTPEQGRMTNKMSTKGALTFSPYLLSHV  
 MGYGFYHFGTYPSTYENPFLHAINNGGYTNTRIEKYEDGGVLHVSFSYRYEAGRVIGDFKVMGTGFPED  
 SVIFTDKIIRSNTAVEHLHPMGDNDLDGSFTRTFSLRDGGYYSSVVDSHMHFKSAIHPISILQNGGPMFA  
 FRRVEEDHSNTELGIVEYQHAFKTPDADAGEERV

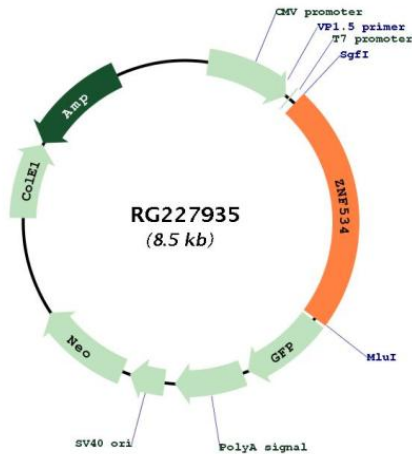
**Restriction Sites:** SgfI-MluI

**Cloning Scheme:**

Cloning sites used for ORF Shuttling:



## Plasmid Map:



ACCN: NM\_001143938

ORF Size: 1983 bp

OTI Disclaimer: The molecular sequence of this clone aligns with the gene accession number as a point of reference only. However, individual transcript sequences of the same gene can differ through naturally occurring variations (e.g. polymorphisms), each with its own valid existence. This clone is substantially in agreement with the reference, but a complete review of all prevailing variants is recommended prior to use. [More info](#)

OTI Annotation: This clone was engineered to express the complete ORF with an expression tag. Expression varies depending on the nature of the gene.

Components: The ORF clone is ion-exchange column purified and shipped in a 2D barcoded Matrix tube containing 10ug of transfection-ready, dried plasmid DNA (reconstitute with 100 ul of water).

Reconstitution Method: 

1. Centrifuge at 5,000xg for 5min.
2. Carefully open the tube and add 100ul of sterile water to dissolve the DNA.
3. Close the tube and incubate for 10 minutes at room temperature.
4. Briefly vortex the tube and then do a quick spin (less than 5000xg) to concentrate the liquid at the bottom.
5. Store the suspended plasmid at -20°C. The DNA is stable for at least one year from date of shipping when stored at -20°C.

RefSeq: [NM\\_001143938.3](#)

RefSeq Size:	5203 bp
RefSeq ORF:	1986 bp
Locus ID:	147658
UniProt ID:	<u><a href="#">Q76KX8</a></u>
Cytogenetics:	19q13.41
MW:	75.8 kDa
Gene Summary:	May be involved in transcriptional regulation.[UniProtKB/Swiss-Prot Function]