

Product datasheet for **RG227930**

53BP1 (TP53BP1) (NM_001141980) Human Tagged ORF Clone

Product data:

Product Type: Expression Plasmids
Product Name: 53BP1 (TP53BP1) (NM_001141980) Human Tagged ORF Clone
Tag: TurboGFP
Symbol: 53BP1
Synonyms: 53BP1; p53BP1; p202; TDRD30
Mammalian Cell Selection: Neomycin
Vector: pCMV6-AC-GFP (PS100010)
E. coli Selection: Ampicillin (100 ug/mL)
ORF Nucleotide Sequence: >RG227930 representing NM_001141980
Red=Cloning site Blue=ORF Green=Tags(s)

TTTTGTAATACGACTCACTATAGGGCGGCCGGAATTCGTCGACTGGATCCGGTACCGAGGAGATCTGCC
 GCCCGATCGCC

ATGCCTGGGGAGCAGATGGACCCTACTGGAAGTCAGTTGGATTGAGATTCTCTCAGCAAGATACTCCTT
 GCCTGATAATTGAAGATTCTCAGCCTGAAAGCCAGGTTCTAGAGGATGATTCTGGTTCTCACTTCAGTAT
 GCTATCTCGACACCTTCTAATCTCCAGACGCACAAAGAAAATCCTGTGTTGGATGTTGTGTCCAATCCT
 GAACAAACAGCTGGAGAAGAACGAGGAGACGGTAATAGTGGTTCATGAACATTTGAAAGAAAACAAGG
 TTGCAGACCCTGTGGATTCTTAACTTGGACACATGTGGTTCATCAGTCAGGTCATTGAGCAGTTACC
 TCAGCCAAACAGGACAAGCAGTGTCTGGGAATGTGAGTGAATCTGCTCCTGCTGTGGAGGAAGAGAAG
 GGAGAAGAGTTGGAACAGAAGGAGAAAGAGAAGGAAGAAGATACTTCAGGCAATACTACACATTCCTTG
 GTGCTGAAGATACTGCCTCATCACAGTTGGGTTTTGGGTTCTGGAATCTCCCAGAGCCAGGATGTTGA
 GGAAAATACTGTGCCATATGAAGTGGACAAAGAGCAGCTACAATCAGTAACCACCAACTCTGGTTATACC
 AGGCTGTCTGATGTGGATGCTAATACTGCAATTAAGCATGAAGAACAGTCCAACGAAGATATCCCATAG
 CAGAACAGTCCAGCAAGGACATCCCTGTGACAGCACAGCCAGTAAGGATGTACATGTTGTAAGAGCA
 AAATCCACCACCTGCAAGTTCAGAGGACATGCCTTTTAGCCCCAAAGCATCTGTTGCTGCTATGGAAGCA
 AAAGAACAGTTGTCTGCACAAGAACTTATGGAAGTGGACTGCAGATTCAGAAGTCACCAGAGCCTGAGG
 TTTTGTCAACTCAGGAAGACTTGTGTTGACCAGAGCAATAAAACAGTATCTTCTGATGTTGCTCTACTCC
 TTCAAGGGAGGAAGGTGGGTGTTCTTTGGCTTCCACTCCTGCCACCCTCTGCATCTCCTGCAGCTCTCT
 GGTGAGAGGTCCTTGTTCAGGACAGTCTTTCCACGAATCTTCAGATCTTGTGCTCCTCTCCTGATG
 CTTTCCGATCTACTCCTTTATCGTTCCTAGCAGTCCCACAGAGCAAGAAGGGAGACAAGATAAGCCAAT
 GGACACGTCAGTGTATCTGAAGAAGGAGGAGAGCCTTTTCAGAAGAACTTCAAAGTGGTGAACCAAGT
 GAGTTAGAAAACCCCTCTCCTGCCTGAGTCCACTGTATCACCACAAGCCTCAACCAATATCTCAGA
 GCACACCAGTCTCCCTCCTGGTCACTTCCTATCCCATCCCAGCCTCAGTTTTCTCATGACATTTTAT
 TCCTTCCCAAGTCTGGAAGAACAATCAAATGATGGGAAGAAAGATGGAGATATGCATAGTTCATCTTTG



ACAGTTGAGTGTCTAAAACCTCAGAGATTGAACCAAAGAATCCCCTGAGGATCTGGGCTATCTTTGA
 CAGGGGATTCTTGCAAGTTGATGCTTTCTACAAGTGAATATAGTCAGTCCCCAAAGATGGAGAGCTTGAG
 TTCTCACAGAATTGATGAAGATGGAGAAAAACACAGATTGAGGATACGGAAACCCATGTCTCCAGTTCTC
 AATTCTAAATTTGTTCTGCTGAAAAATGATAGTATCCTGATGAATCCAGCACAGGATGGTGAAGTACAAC
 TGAGTCAGAATGATGACAAAACAAGGGAGATGATACAGACACCAGGGATGACATTAGTATTTTAGCCAC
 TGGTTGCAAGGGCAGAGAAGAAACGGTAGCAGAAGATGTTTGTATTGATCTCACTGTGATTGCGGGGAGT
 CAGGCAGTCCGTCACCAGCTACTCGATCTGAGGCACTTCTAGTGTGTTAGATCAGGAGGAAGCTATGG
 AAATTAAGAACACCCATCCAGAGGAGGGTCTTCAGGGTCTGAGGTGGAAGAAATCCCTGAGACACCTTG
 TGAAGTCAAGGAGAGGAACTCAAAGAAGAAAATATGGAGAGTGTCCGTTGCACCTTTCTGACTGAA
 ACTCAGTCCCAAGGGTGTGCTTCAAAGGAAATGCCAAAAAAGAATGCTCAGAAGCTATGGAAGTTG
 AAACCAGTGTGATTAGTATTGATCCCTCAAAGTTGGCAACTCTTGACCAAGAATTGGAACATAAGGA
 ACAGGAAGCTTGGGAAGAAGCTACTTCAGAGGACTCCAGTGTGTCATTGTAGATGTGAAAGAGCCATCT
 CCCAGAGTTGATGTTTCTGTGAACCTTTGGAGGGAGTGGAGAAGTGTCTCAGATCCCAGTCATGGGAGG
 ATATTGCTCCAGAAATAGAACCATGTGCTGAGAATAGATTAGACACCAAGGAAGAAAAGAGTGTAGAATA
 TGAAGGAGATCTGAAATCAGGGACTGCAGAAACAGAACCTGTAGAGCAAGATTCTCACAGCCTTCTTA
 CCTTTAGTGAGAGCAGATGATCCTTAAAGACTTGACCAGGAGTTGCAGCAGCCCCAAACTCAGGAGAAAA
 CAAGTAATTCATTAACAGAAGACTCAAAAATGGCTAATGCAAAGCAGCTAAGCTCAGATGCAGAGGCCCA
 GAAGCTGGGAAGCCCTGCCCCATGCCTCACAAGCTTCTGTGAAAGTTCTAGTGAAACCCCATTTTCAT
 TTCACCTTGCCTAAAGAAGGTGATATCATCCCACCATTGACTGGTGAACCCACCTCTTATTGGGCACC
 TAAAATTTGGAGCCCAAGAGACACAGTACTCCTATTGGTATTAGCAACTATCCAGAAAGCACCATAGCAAC
 CAGTGATGTATGCTGAAAGCATGGTGGAGACCCATGATCCCATACTTGGGAGTGGAAAAGGGGATTCT
 GGGGCTGCCCCAGACGTGGATGATAAATATGTCTAAGAATGAACTGGTGTAGTCTGAGACTGAGGCGA
 GTGAAGAGTCTTTGCAGTTCAACCTGAAAAGCCTGCAACTGGTGAAGAAAAAATGGACTACTGCTGT
 TGCTGAGTCTGTTGCAGTCCCCAGAAGACCATGTCTGTGTTGAGCTGTATCTGTGAAGCCAGGCAAGAG
 AATGAGGCTCGAAGTGAAGATCCCCCACCACACCCATCAGGGGAACTTGTCCACTTTCCAAGTTCTC
 AAGGAGAAGAGGAGAAAGAAAAATTGGAGGGTACCATAACAATCAGGCAGAGTCAACAGCCTATGAAGCC
 CATTAGTCTGTCAAGGACCCCTGTTTCTCTGCTTCCCAGAAGATGGTCAACAAGGGCCATCCAGTCTC
 CAAGGAGAGGCAATGGTACAGATGTGCTAGAAGACCAGAAAGAAGGACGGAGTACTAATAAGGAAAAATC
 CTAGTAAGGCCTTGATTGAAAGGCCAGCCAAAATAACATAGGAATCCAAACCATGGAGTGTTCCTTGAG
 GGTCCCAGAACTGTTTTCAGCAGCAACCCAGACTATAAAGAATGTGTGTGAGCAGGGGACCAGTACAGTG
 GACCAGAACTTTGAAAGCAAGATGCCACAGTTCAGACTGAGAGGGGGAGTGGTGAAGAACAGTCAAGTG
 CTCTGGGGATGATACAGAGTCGCTCCATAGCCAGGGAGAAGAAGAGTTTGATATGCCTCAGCCTCCACA
 TGGCCATGTCTTACATCGTCACATGAGAACAATCCGGGAAGTACGCACACTTGTCACTCGTGTCAATTACA
 GATGTGTATTATGTGGATGGAACAGAAGTAGAAAGAAAAGTAACTGAGGAGACTGAAGAGCCAATTGTAG
 AGTGTCCAGGAGTGTGAACTGAAGTTTCCCCTTACAGACTGGGGGCTCCTCAGGTGACCTGGGGGATAT
 CAGCTCCTTCTCCTCCAAGGCATCCAGCTTACACCCGCACATCAAGTGGGACAAGTCTCTCAGCTATGCAC
 AGCAGTGAAGCTCAGGGAAAGGAGCCGGACACTCAGAGGGAAAACCAGCGGGACAGAACCCGCAGATT
 TTGCCTTACCCAGCTCCCGAGGAGGCCAGGAAAACAGTCTTAGAAAAGGGGTGAGTCAAGCAGGAGGAC
 GCCAGTGTGTGAGGAGGATGGTGTGTCAGGCTTGGCATCAGACAGGGAGGGAAGGCTCCAGTCAAGCCT
 CGTGGGCGTGGGCGAAGGGCCGCCACCTTCTCGGACCACTGGAACCAGAGAAAACAGCTGTGCCTGGCC
 CCTTGGGCATAGAGGACATTTACCTAACTTGTACCAGATGATAAATCCTTTCAGCCGTGTGTCGCCCCG
 AGTGCCAGACTCCACCAGACGAACAGATGTGGGTGCTGGTGTGCTTGTGCTGTAGTACTCTCCAGAAAT
 CCTTCCAGGCTGCTGCTGGCCCTTCTGATGGCTTAGATGCCTCCTCCTCAGGAAATAGCTTTGTAGGGC
 TCCGTGTTGTAGCAAGTGGTCACTCAATGGCTACTTTTACTCTGGGAAAATCACACGAGATGTCGGAGC
 TGGGAAGTATAAATTGCTCTTTGATGATGGGTACGAATGTGATGTGTTGGGCAAAGACATTCTGTTATGT
 GACCCCATCCCGCTGGACTGAAGTACGGCCCTCTCGGAGGATGAGTATTTCACTGCAGGAGTGGTGA
 AAGGACATAGGAAGGAGTCTGGGAACTGTACTACAGCATTGAAAAGAAGGCCAAAGAAAGTGGTATAA
 GCGAATGGCTGTATCCTGTCTTGGAGCAAGGAAACAGACTGAGAGAGCAGTATGGGCTTGGCCCTAT
 GAAGCAGTAACACCTCTTACAAAGGCAGCAGATATCAGCTTAGACAATTTGGTGGAGGGGAAGCGGAAAC
 GGCGCAGTAACGTGAGTCCCCAGCCACCCCTACTGCCTCAGTATGACAGCAGCACAACCCCTACCCGAAA
 GATCACAGAAAGTCTCGTGCCTCCATGGGAGTCTCTCAGGCAAAGAAAACCTTACACTTCTGAAGAG
 GAACGGTCCCCTGCCAAGCGAGGTGCGAAGTCTGCCACAGTAAAACCTGGTGCAGTAGGGGCAGGAGAGT

TTGTGAGCCCCTGTGAGAGTGGAGACAACACCGGTGAACCCTCTGCCCTGGAAGAGCAGAGAGGGCCTTT
 GCCTCTCAACAAGACCTTGTCTGGGCTACGCATTTCTCCTTACCATGGCCACAACCAAGTGACAAGTTG
 GCCAGCCGCTCCAACTGCCAGATGGTCTACAGGAAGCAGTGAAGAAGAGGAGGAATTTTTGAAATTC
 CTCCTTCAACAAGCAGTATACAGAATCCCAGCTTCGAGCAGGAGCTGGCTATATCCTTGAAGATTTCAA
 TGAAGCCCAGTGTAAACACAGCTTACCAGTGTCTTCAATTGCGGATCAGCATTGTGAACCCGGAAGTAC
 TTCTGTGCCTTGCCAGTGGGATTCCTTGTGTCTCATGTCTGGGTCCATGATAGTTGCCATGCCAACCC
 AGCTCCAGAACTACCGTAATTATCTGTTGCCAGCTGGGTACAGCCTTGAGGAGCAAAGAATTCTGGACTG
 GCAACCCCGTGAAAATCCTTTCCAGAATCTGAAGTACTCTTGGTATCAGACCAACAGCAGAACTTCTCG
 GAGCTCTGGTCTGAGATCCTCATGACTGGTGGTGCAGCCTCTGTGAAGCAGCACCATTCAAGTGCCATA
 ACAAAGATATTGCTTTAGGGGATTTGATGTGGTGGTGACGGACCCTCATGCCAGCCTCGGTGCTGAA
 GTGTGCTGAAGCATTGCAGCTGCCTGTGGTGTCAAGAGTGGGTGATCCAGTGCCTCATTGTTGGGGAG
 AGAATTGGATTCAAGCAGCATCCAAAATATAAACACGATTATGTTTCTCAC

ACGCGTACGCGGCCGCTCGAG - GFP Tag - GTTTAA

Protein Sequence:

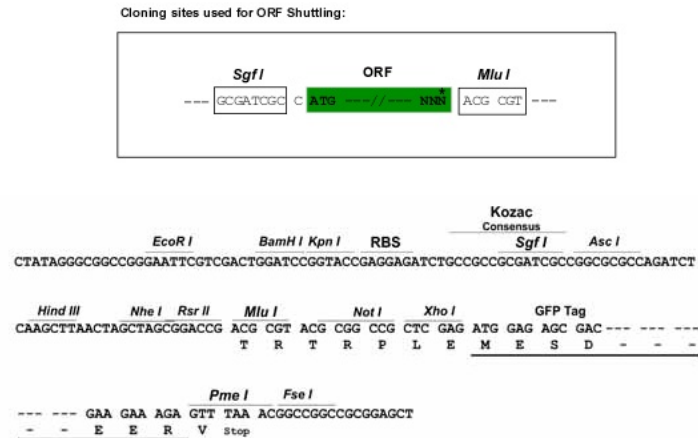
>RG227930 representing NM_001141980
 Red=Cloning site Green=Tags(s)

MPGEQMDPTGSQQLSDSFSQQDTPCLIIEDSQPESQVLEDDSGSHFSMLSRHLPNLQTHKENPVLDDVSNP
 EQTAGEERDGNSEHLEKENVADPVDSSNLDTCGSIQVIEQLPQPNRTSSVLGMSVESAPAVEEEK
 GEELQKEKEKEEDTSGNTHSLGAEDTASSQLGFGVLELSQSQDVEENTVPYEVKDEQLQSVTTNSGYT
 RLSVDVANTAIAKHEEQSNEDIPIAEQSSKDIPTVAQPSKDVHVVEKQNPAPARSEDMPFSPKASVAAMEA
 KEQLSAQELMESGLQIQKSPEPEVLSTQEDLFDQSNKTVSSDGCSTPSREEGGCSLASTPATTLLHLLQLS
 GQRSLVQDSLSTNSSDLVAPSPDAFRSTPFIIVPSSPTEQEGRQDKPMDTSVLSEEGGEPFQKQLQSGEPV
 ELENPPLLPESTVSPQASTPISQSTPVFPPGSLPIPSQPQFSDHIFIPSPSLEEQSNQDGGKDGDMHSSSL
 TVECSKTSEIEPKNSPEDLGLSLTGDSCKLMLSTSEYSQSPKMESSLSSHRIDEDGENTQIEDTEPMSPVL
 NSKFVPAENDSILMNPAQDGEVQLSQNDDKTKGDDTDRDDISILATGCKGREETVAEDVICIDLTCDSGS
 QAVPSPATRSEALSSVLQDQEEAMEIKEHHPEEGSSGSEVEEIPETPCESQGEELKEENMESVPLHLSL TE
 TQSQGLCLQKEMPKKECESEAMEVETSVISIDSPQKLAILDQELEHKEQEAWEATSEDSSVVIVDVKEPS
 PRVDVSSCEPLEGVEKCSDSQSWEDIAPEIEPCAENRLDTKEEKSVEYEGDLKSGTAETEPVEQDSSQPSL
 PLVRRADDPLRLDQELQQPQTQEKTSNSLTEDSKMANAKQLSSDAEAQKLGKPSAHASQSFCESSSETPFH
 FTLPKEGDIIPPLTGATPPLIGHLKLKLEPKRHSTPIGINSYPESTIATSDVMSESMVETHDPIILGSGKGS
 GAAPDVEDDLCLRMKLVSPETEASEESLQFNLEKPATGERKNGSTAVAESVASPQKTMSVLSCEIARQE
 NEARSEDPPPTPIRGNLLHFPSSQGEKEKLEGDHTIRQSQQPMKPISPVKDPVSPASQKMIQGPSSP
 QGEAMVTDVLEDQKEGRSTNKENPSKALIERPSQNNIGIQTMECSLRVPETVSAATQTIKNVCEQGTSTV
 DQNFQKQDATVQTERGSGEKPVAPGDDTESLHSGEEEFDMPPHGHVLRHMRTIREVRTLVTRVIT
 DVYYVDGTEVERKVTEETEEPIVEQCETEVSPSQTGGSSGDLGDISSFSKASSLHRTSSGTSLSAMH
 SSGSSGKAGPLRGKTSGETPADFALPSSRGGPGKLSPRKGVSTGTPVCEEDGDAGLGIRQGGKAPVTP
 RGRRRRGRPPSRTTGRETAVPGPLGIEDISPDLSPDDKSF SRVVRVPDSTRRTDVGAGALRRSDSPEI
 PFQAAAGPSDGLDASSPNSFVGLRVVAKWSSNGYFYSGKITRDVAGAKYKLLFDDGYECDVLGKIDILLC
 DPIPLDTEVTALSEDEYFSAGVVKGRKESGELYYSIEKEGQRKWKYKMAVILSLEQGNRLREYGLGPY
 EAVTPLTKAADISLDNLVEGKRKRRSNVSSPATPTASSSSSTTPTRKITESPRASMGVLSGKRKLIITSEE
 ERSPAKRGRKSATVKPGAVGAGEFVSPCESGDNTGEPSEALQEQGPLPLNKTFLGYAFLLTMATTSKDL
 ASRSLPDGPTGSSEEEEEFLEIPPFNKQYTESQLRAGAGYILEDNFNEAQCNTAYQCLLIADQHCRTKRY
 FLCLASGIPCVSHVWVHDSCHANQLQNYRNYLLPAGYSLEEQRILDWQPRENPFQNLKVLVSDQQNLF
 ELWSEILMTGGAASVKQHSSAHNKDIALGVFDVVVTDPSCPASVLKCAEALQLPVVVSQEWVIQCLIVGE
 RIGFKQHPKYKHDIYVSH

TRTRPLE - GFP Tag - V

Restriction Sites:

Sgfl-Mlul

Cloning Scheme:


ACCN: NM_001141980

ORF Size: 5931 bp

OTI Disclaimer: The molecular sequence of this clone aligns with the gene accession number as a point of reference only. However, individual transcript sequences of the same gene can differ through naturally occurring variations (e.g. polymorphisms), each with its own valid existence. This clone is substantially in agreement with the reference, but a complete review of all prevailing variants is recommended prior to use. [More info](#)

OTI Annotation: This clone was engineered to express the complete ORF with an expression tag. Expression varies depending on the nature of the gene.

Components: The ORF clone is ion-exchange column purified and shipped in a 2D barcoded Matrix tube containing 10ug of transfection-ready, dried plasmid DNA (reconstitute with 100 ul of water).

Reconstitution Method:

1. Centrifuge at 5,000xg for 5min.
2. Carefully open the tube and add 100ul of sterile water to dissolve the DNA.
3. Close the tube and incubate for 10 minutes at room temperature.
4. Briefly vortex the tube and then do a quick spin (less than 5000xg) to concentrate the liquid at the bottom.
5. Store the suspended plasmid at -20°C. The DNA is stable for at least one year from date of shipping when stored at -20°C.

RefSeq: [NM_001141980.3](#)

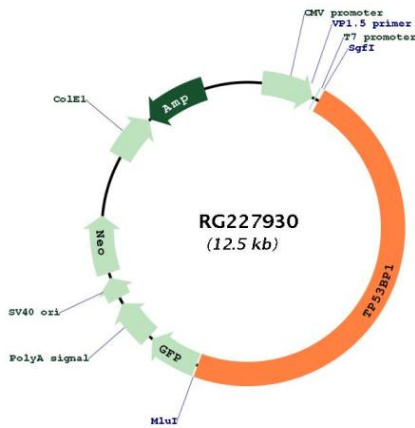
RefSeq Size: 6216 bp

RefSeq ORF: 5934 bp

Locus ID: 7158

UniProt ID: [Q12888](#)
Cytogenetics: 15q15.3
Protein Families: Druggable Genome, Transcription Factors
Gene Summary: This gene encodes a protein that functions in the DNA double-strand break repair pathway choice, promoting non-homologous end joining (NHEJ) pathways, and limiting homologous recombination. This protein plays multiple roles in the DNA damage response, including promoting checkpoint signaling following DNA damage, acting as a scaffold for recruitment of DNA damage response proteins to damaged chromatin, and promoting NHEJ pathways by limiting end resection following a double-strand break. These roles are also important during V(D)J recombination, class switch recombination and at unprotected telomeres. Alternative splicing results in multiple transcript variants encoding different isoforms. [provided by RefSeq, Aug 2017]

Product images:



Circular map for RG227930