

Product datasheet for **RG227920**

Nuclear Factor 1 (NFIA) (NM_001145511) Human Tagged ORF Clone

Product data:

Product Type:	Expression Plasmids
Product Name:	Nuclear Factor 1 (NFIA) (NM_001145511) Human Tagged ORF Clone
Tag:	TurboGFP
Symbol:	NFIA
Synonyms:	BRMUTD; CTF; NF-I/A; NF1-A; NFI-A; NFI-L
Mammalian Cell Selection:	Neomycin
Vector:	pCMV6-AC-GFP (PS100010)
E. coli Selection:	Ampicillin (100 ug/mL)



[View online »](#)

ORF Nucleotide Sequence:

>RG227920 representing NM_001145511
 Red=Cloning site Blue=ORF Green=Tags(s)

TTTTGTAATACGACTCACTATAGGGCGGCCGGAATTCGTCGACTGGATCCGGTACCGAGGAGATCTGCC
 GCC**CGGATCGCC**

ATGGATGAATTTTCATCCTTTTCATCGAAGCACTTCTGCCCCACGTCGGAGCCTTTGCCTACACATGGTTCA
 ACCTGCAGGCCCGAAAACGAAAATACTTCAAAAAACATGAAAAGCGTATGTCAAAAAGAAGAAGAGAGAGC
 CGTGAAGGATGAATTGCTAAGTAAAAACAGAGGTCAAGCAGAAGTGGGCATCTCGACTTCTGGCAAAG
 TTGCGGAAAGATATCCGACCCGAATATCGAGAGGATTTTGTCTTACAGTTACAGGGAAAAAACCTCCAT
 GTTGTGTTCTTTCAACCCAGACCAGAAAAGCAAGATGCGAAGAATTGACTGCCTCCGCCAGGCAGATAA
 AGTCTGGAGGTTGGACCTTGTTATGGTGATTTTGTAAAGGTATTCCGCTGGAAAGTACTGATGGCGAG
 CGCCTTGTAAAGTCCCACAATGCTCTAATCCAGGGCTCTGTGTCAACCCCATCATAGGGGTTTCTG
 TTAAGGAAGTCTGATTTATATTTGGCATACTTTGTGCATGCAGCAGATTCAAGTCAATCTGAAAGTCCCAG
 CCAGCCAAGTGCAGCTGACATTAAGGACCAGCCAGAAAATGGACATTTGGGCTTCCAGGACAGTTTTGTC
 ACATCAGGTGTTTTAGTGTCACTGAGCTAGTAAGAGTGTACAGACACCAATAGCTGCAGGAAGTGGCC
 CAAATTTTTCTCTCTCAGATTTGGAAAGTTCTTCATACTACAGCATGAGTCCAGGAGCAATGAGGAGGTC
 TTTACCCAGCACATCCTCTACGAGCTCCACAAAGCGCCTCAAGTCTGTGGAGGATGAAATGGACAGTCTT
 GGTGAGGAGCCATTTTATACAGGCCAAGGGCGCTCCCAAGGAGTGGCAGTCAAGTGGATGGCATG
 AAGTGGAGCCAGGAATGCCATCTCCAACACACTGAAGAAGTCCGAGAAGTCTGGTTTCAGCAGCCCTC
 CCCTTCACAGACCTCCTCCCTGGGAACGGGTTTACACAGCATCACCGACCTGTCAATACAGGACCCAGA
 GCAAGTCCGCATGCAACACCATCGACTCTTCATTTCCGACATCACCCATTATCCAGCAGCCTGGGCCTT
 ACTTCTCACACCCAGCCATCCGCTATCACCTCAGGAGACGCTGAAAGAATTTGTCCAACCTGTCTGCC
 TGATGCTGGTCAGCAGGCTGGACAGGTGGGTTTCTCAATCCCAATGGGAGCAGCCAAGCAAGGTGCAC
 AACCCATTCTTCCACCCCAATGTTGCCACCGCCACCGCCACCACCGATGGCCAGGCTGTGCCTCTGC
 CGGTGCCAGACACAAAGCCTCCAACCACGTCAACAGAAGGAGGTGCAGCCTCCCCACGTACCAACCTA
 CTCGACACCCAGCACCTCCCCGCAAACCGATTCTGTCAGTGTGGACCACGGGATCCAAGCTTTGTAAT
 ATCCCTCAACAGACACAGTCTGGTACCTGGGA

ACGCGTACGCGGCCGCTCGAG – GFP Tag – GTTTAA

Protein Sequence:

>RG227920 representing NM_001145511
 Red=Cloning site Green=Tags(s)

MDEFHPFIEALLPHVRAFAYTWFNLQARKRKYFKKHEKRMSKEEERAVKDELLSEKPEVKQKQKASRLLAK
 LRKDIRPEYREDFVLTVTGKKPPCCVLSNPDKGKMRRIDCLRQADKVVRLDLVMVILFKGIPLSTDGE
 RLVKSPQCSNPGLCVQPHHIGVSVKELDLYLAYFVHAADSSQSESPSQPSDADIKDQPEHGLGFQDSFV
 TSGVFSVTELVRVSQTPIAAGTGPNFSLSDLESSYYSMSPGAMRRSLPSTSSTSTKRLKSVEDEMDSP
 GEEPFYTGQGRSPGSGSQSSGWHEVEPGMPSPTLLKKSEKSGFSSPSQTSSTLGTAFTHHRPVIITGPR
 ASPHATPSTLHFPTSPIIQQPGPYFSHPAIRYHPQETLKEFVQLVCPDAGQQAGQVGFNLNPNSSQKGVH
 NPFLPTMLPPPPPPMARVPLVVPDTPPTTSTEGGAASPTSTPTSTSPANRFVSVGPRDPSFVN
 IPQQTQSWYLG

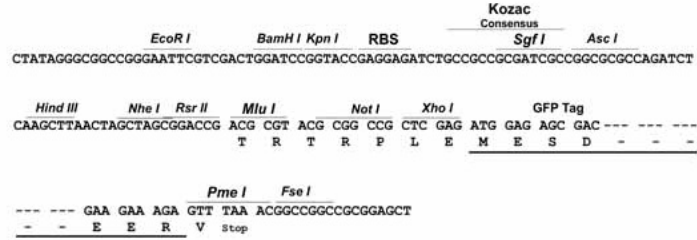
TRTRPLE – GFP Tag – V

Restriction Sites:

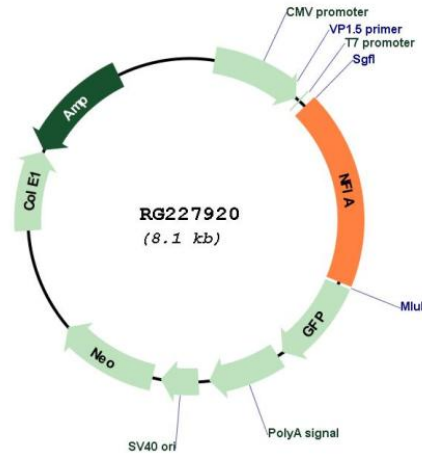
Sgfl-MluI

Cloning Scheme:

Cloning sites used for ORF Shutting:



Plasmid Map:



ACCN: NM_001145511

ORF Size: 1503 bp

OTI Disclaimer: The molecular sequence of this clone aligns with the gene accession number as a point of reference only. However, individual transcript sequences of the same gene can differ through naturally occurring variations (e.g. polymorphisms), each with its own valid existence. This clone is substantially in agreement with the reference, but a complete review of all prevailing variants is recommended prior to use. [More info](#)

OTI Annotation: This clone was engineered to express the complete ORF with an expression tag. Expression varies depending on the nature of the gene.

Components: The ORF clone is ion-exchange column purified and shipped in a 2D barcoded Matrix tube containing 10ug of transfection-ready, dried plasmid DNA (reconstitute with 100 ul of water).

Reconstitution Method:

1. Centrifuge at 5,000xg for 5min.
2. Carefully open the tube and add 100ul of sterile water to dissolve the DNA.
3. Close the tube and incubate for 10 minutes at room temperature.
4. Briefly vortex the tube and then do a quick spin (less than 5000xg) to concentrate the liquid at the bottom.
5. Store the suspended plasmid at -20°C. The DNA is stable for at least one year from date of shipping when stored at -20°C.

RefSeq: [NM_001145511.2](#)

RefSeq Size: 9339 bp

RefSeq ORF: 1506 bp

Locus ID: 4774

UniProt ID: [Q12857](#)

Cytogenetics: 1p31.3

Protein Families: Transcription Factors

Gene Summary: This gene encodes a member of the NF1 (nuclear factor 1) family of transcription factors. Multiple transcript variants encoding different isoforms have been found for this gene. [provided by RefSeq, Sep 2011]