

Product datasheet for **RG227911**

CD133 (PROM1) (NM_001145850) Human Tagged ORF Clone

Product data:

Product Type:	Expression Plasmids
Product Name:	CD133 (PROM1) (NM_001145850) Human Tagged ORF Clone
Tag:	TurboGFP
Symbol:	PROM1
Synonyms:	AC133; CD133; CORD12; MCDR2; MSTP061; PROML1; RP41; STGD4
Mammalian Cell Selection:	Neomycin
Vector:	pCMV6-AC-GFP (PS100010)
E. coli Selection:	Ampicillin (100 ug/mL)



[View online »](#)

ORF Nucleotide
Sequence:

>RG227911 representing NM_001145850
Red=Cloning site Blue=ORF Green=Tags(s)

TTTTGTAATACGACTCACTATAGGGCGGCCGGAATTCGTGACTGGATCCGGTACCGAGGAGATCTGCC
GCC**CGGATCGCC**

ATGGCCCTCGTACTCGGCTCCCTGTTGCTGCTGGGGCTGTGCGGAACTCCTTTTCAGGAGGCAGCCTT
CATCCACAGATGCTCCTAAGGCTTGGAATTATGAATTGCCTGCAACAAATTATGAGACCCAGACTCCCA
TAAAGCTGGACCCATTGGCATTCTCTTTGAACTAGTGCATATCTTTCTCTATGTGGTACAGCCGCGTGAT
TTCCAGAAAGATACTTTGAGAAAATTCTTACAGAAGGCATATGAATCCAAAATTGATTATGACAAGCCAG
AAACTGTAATCTTAGGTCTAAAGATTGTCTACTATGAAGCAGGGATTATTCTATGCTGTCTCTGGGGCT
GCTGTTTATTATTCTGATGCCTCTGGTGGGGTATTTCTTTTGTATGTGCTGTTGCTGTAACAAATGTGGT
GGAGAAATGCACCAGCGACAGAAGGAAATGGGCCCTTCTGAGGAAATGCTTTGCAATCTCCCTGTTGG
TGATTTGTATAATAAAGCATTGGCATCTTCTATGGTTTGTGGCAAATCACCAGGTAAGAACCCGGAT
CAAAGGAGTCGAAACTGGCAGATAGCAATTTCAAGGACTTGGAACTCTCTTGAATGAACTCCAGAG
CAAATCAAATATATATTGGCCAGTACAACACTACCAAGGACAAGGCGTTACAGATCTGAACAGTATCA
ATTCAGTGCTAGGAGGCGGAATTCCTGACCGACTGAGACCCAACATCATCCCTGTTCTTGATGAGATTAA
GTCCATGGCAACAGCGATCAAGGAGACCAAGAGGCGTTGGAGAACATGAACAGCACCTTGAAGAGCTTG
CACCAACAAAGTACACAGCTTAGCAGCAGTCTGACCAGCGTGAAGAACTAGCCTGCGGTACTCTCAATG
ACCCTCTGTGCTTGGTGCATCCATCAAGTGAACCTGCAACAGCATCAGATTGTCTCTAAGCCAGCTGAA
TAGCAACCCTGAACTGAGGCAGCTTCCACCCGTGGATGCAGAACTTGACAACGTTAATAACGTTCTTAGG
ACAGATTTGGATGGCCTGGTCCAACAGGGCTATCAATCCCTTAATGATATACTGACAGAGTACAACGCC
AAACCAGACTGTGCTAGCAGGTATCAAAAGGGTCTTGAATTCATTGGTTGAGATATCGACAATGTAAC
TCAGCGTCTTCTATTACAGGATATACTCTCAGCATTCTCTGTTTATGTTAATAACACTGAAAGTTACATC
CACAGAAATTTACCTACATTGGAAGAGTATGATTCACTGCTGGTGGCTGGGTGGCCTGGTCACTGCTCTC
TGCTGACCCTCATCGTATTTTTACTACCTGGGCTTACTGTGTGGCGTGTGCGGCTATGACAGGCATGC
CACCCCGACCACCGAGGCTGTGCTCCAACACCGGAGGCGTCTTCTCATGGTTGGAGTTGGATTAAGT
TTCCTCTTTGCTGGATATTGATGATCATTGTGGTTCTTACCTTTGTCTTTGGTGCAAATGTGGAAAAAC
TGATCTGTGAACCTTACACGAGCAAGGAATTTCCGGGTTTTGGATACACCTACTTACTAAATGAAGA
CTGGGAATACTATCTCTCTGGGAAGCTATTTAATAAATCAAAAAATGAAGCTCACTTTTGAACAAGTTTAC
AGTGACTGCAAAAAAATAGAGGCACTTACGGCACTCTTACCTGCAGAACAGCTTCAATATCAGTGAAC
ATCTCAACATTAATGAGCATACTGGAAGCATAAGCAGTGAATTGGAAAGTCTGAAGGTAAATCTTAATAT
CTTTCTGTTGGGTGCAGCAGGAAGAAAAACCTTCAGGATTTTGTGCTTGTGGAATAGACAGAATGAAT
TATGACAGCTACTTGGCTCAGACTGGTAAATCCCCCGCAGGAGTGAATCTTTTATCATTTGCATATGATC
TAGAAGCAAAAGCAAACAGTTTGGCCCCAGGAAATTTGAGGAACTCCCTGAAAAGAGATGCACAACTAT
TAAACAATTCACCAGCAACGAGTCTTCTATAGAACAATCACTGAGCACTCTATACCAAAGCGTCAAG
ATACTTCAACGCACAGGGAATGGATTGTTGGAGAGAGTAACTAGGATTCTAGCTTCTCTGGATTTTGCTC
AGAATTCATCACAACAATACTTCTCTGTTATTATTGAGGAACTAAGAAGTATGGGAGAACAATAAT
AGGATTTTTGAACATTATCTGCAGTGGATCGAGTTCTCTATCAGTGAGAAAGTGGCATCGTGCAAACCT
GTGGCCACCGCTCTAGATACTGCTGTTGATGTCTTTCTGTGTAGCTACATTATCGACCCCTTGAATTTGT
TTTGGTTTGGCATAGGAAAAGCTACTGATTTTTACTTCCGGCTCTAATTTTTGCGGTA AAACTGGCTAA
GTACTATCGTCAATGGATTCCGAGGACGTGTACGATGACCCATCACAACAT

ACCGTACGCGGCCGCTCGAG - GFP Tag - GTTTAA

Protein Sequence: >RG227911 representing NM_001145850
Red=Cloning site Green=Tags(s)

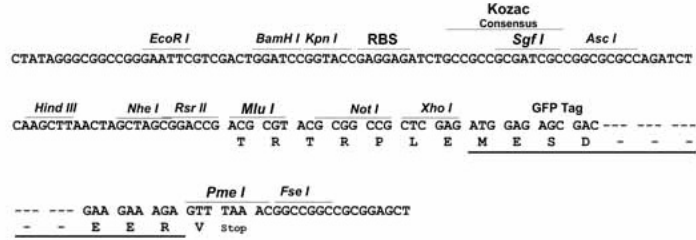
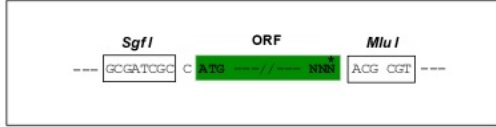
MALVLGSLLLLGLCGNSFSGGQPSSTDAPKAWNYELPATNYETQDSHKAGPIGILFELVHIFLYVYVQPRD
FPEDTLRKFLQKAYESKIDYDKPETVILGLKIVYYEAGIILCCVLGLLF IILMPLVGYFFCMCRCCNKCG
GEMHQKQKENGPF LRKCF AISLLVICIIISIGIFYGFVANHQVRTRIKRSRKLADSNFKDLRLLNETPE
QIKYILAQYNTTKDKAFD LNSIN SVLGGGILDRLRPNIIPVLDEIKSMATAIKETKEALENMNSTLKSL
HQQSTQLSSSLTSVKTSRSSLNDPLCLVHPSSETCNSIRLSLSQLNSNPELRQLPPVDAELDNVNNVLR
TDLDGLVQQGYQSLNDIPDRVQRQT TTVVAGIKRVLNSIGSDIDNVTQRLPIQDILSAFSVYVNTESYI
HRNLPTLEEYDSYWLGGLVICSLLLTIVIFYLGLLCGVCYDRHATPTTRGCVSNTGGVFLMVGVGLS
FLFCWILMIIVLTFVFGANVEKLICEPYTSKELFRVLDTPYLLNEDWEYLSGKLFNKSMMKLTFEQVY
SDCKKNRGTYGTLHLQNSFNISEHLNINEHTGSISSELESKVNLNIFLLGAAGRKNLQDFAACGIDRMN
YDSYLAQTGKSPAGVNL LSFAYDLEAKANSLPPGNLRNSLKRDAQTIKTIHQQRVLP IEQSLSTLYQSVK
ILQRTGNGLLERVTRILASL DFAQNFITNNTSSVIEETKKYGR TIIGYFEHYLQWIEFSISEKVASCKP
VATALDTAVDVFLCSYIIDPLNLFWFGIGKATVFLLPALIFAVKLAKYRRM DSEDVYDDPSQH

TRTRPLE - GFP Tag - V

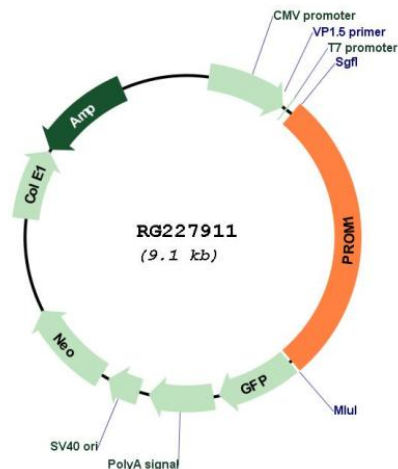
Restriction Sites: Sgfl-MluI

Cloning Scheme:

Cloning sites used for ORF Shutting:



Plasmid Map:



ACCN: NM_001145850

ORF Size: 2502 bp

OTI Disclaimer: The molecular sequence of this clone aligns with the gene accession number as a point of reference only. However, individual transcript sequences of the same gene can differ through naturally occurring variations (e.g. polymorphisms), each with its own valid existence. This clone is substantially in agreement with the reference, but a complete review of all prevailing variants is recommended prior to use. [More info](#)

OTI Annotation: This clone was engineered to express the complete ORF with an expression tag. Expression varies depending on the nature of the gene.

Components: The ORF clone is ion-exchange column purified and shipped in a 2D barcoded Matrix tube containing 10ug of transfection-ready, dried plasmid DNA (reconstitute with 100 ul of water).

Reconstitution Method:

1. Centrifuge at 5,000xg for 5min.
2. Carefully open the tube and add 100ul of sterile water to dissolve the DNA.
3. Close the tube and incubate for 10 minutes at room temperature.
4. Briefly vortex the tube and then do a quick spin (less than 5000xg) to concentrate the liquid at the bottom.
5. Store the suspended plasmid at -20°C. The DNA is stable for at least one year from date of shipping when stored at -20°C.

RefSeq: [NM_001145850.2](#)

RefSeq Size: 3884 bp

RefSeq ORF: 2505 bp

Locus ID: 8842

UniProt ID: [O43490](#)

Cytogenetics: 4p15.32

Protein Families: Druggable Genome, ES Cell Differentiation/IPS, Transmembrane

Gene Summary: This gene encodes a pentaspan transmembrane glycoprotein. The protein localizes to membrane protrusions and is often expressed on adult stem cells, where it is thought to function in maintaining stem cell properties by suppressing differentiation. Mutations in this gene have been shown to result in retinitis pigmentosa and Stargardt disease. Expression of this gene is also associated with several types of cancer. This gene is expressed from at least five alternative promoters that are expressed in a tissue-dependent manner. Multiple transcript variants encoding different isoforms have been found for this gene. [provided by RefSeq, Mar 2009]