

Product datasheet for **RG227908**

VASH2 (NM_001136475) Human Tagged ORF Clone

Product data:

Product Type: Expression Plasmids
Product Name: VASH2 (NM_001136475) Human Tagged ORF Clone
Tag: TurboGFP
Symbol: VASH2
Mammalian Cell Selection: Neomycin
Vector: pCMV6-AC-GFP (PS100010)
E. coli Selection: Ampicillin (100 ug/mL)
ORF Nucleotide Sequence: >RG227908 representing NM_001136475
Red=Cloning site Blue=ORF Green=Tags(s)

TTTTGTAATACGACTCACTATAGGGCGGCCGGAATTCGTCGACTGGATCCGGTACCGAGGAGATCTGCC
GCCCGATCGCC

ATGACGATCCCAGACTGGCTCCAGGCGATCCAGAATTACATGAAGACCCTACAATATAATCACACAGGGA
 CCCAGTTCTTTGAAATTAGGAAAATGAGACCGCTGAGTGGGTTAATGGAAACAGCAAAGAAATGACCCG
 AGAGTCCTTGCCTATCAAATGCCTTGAAGCTGTACCTGGGCATCTACTTAACCAATGGGCAGCCTTCC
 ATTGAGCGGTTCCCATCAGCTTTAAAACCTACTTCTCAGGAACTACTTTCACCACGTTGTGCTGGGGA
 TTTACTGCAATGGCCGCTATGGCTCATTGGGCATGAGCCGAGGGCTGAGCTGATGGACAAGCCATTGAC
 TTTTCGGACTCTGAGTGACCTCATCTTTGACTTTGAGGACTCTTACAAGAAATACCTGCACACAGTCAAG
 AAGGTCAAGATTGGGCTGTACGTCCCCCATGAGCCTCATAGCTTCCAGCCATTGAGTGGGAGCAGCTGG
 TCCTCAACGTCTCAAAGATGCTGAGGGCTGACATAAGGAAGGAGCTGGAGAAATATGCCAGGACATGAG
 AATGAAGATCCTGAAACCTGCAAGTGCCCACTCTCCGACCAAGTGAGAAGCCGGGGAAAAATCCCTGTCC
 CCCAGAAGGAGACAGGCAAGCCCCCGAGGAGGCTCGGCCGGCGAGAGAAGTCGCTGACTGCCTGAAA
 AGAAGGTGGCTGATCTGAGCACTCTGAATGAAGTGGGCTATCAAATCCGAATT

ACGCGTACGCGGCCGCTCGAG - GFP Tag - GTTTAA

Protein Sequence: >RG227908 representing NM_001136475
Red=Cloning site Green=Tags(s)

MTIPDWLQAIQNYMKTLYNHTGTQFFEIRKMRPLSGLMETAKEMTRESLPIKCLEAVILGIYLTNGQPS
 IERFPISEFKTYFSGNYFHHVVLGIYCNGRYSLGMSRRAELMDKPLTFRTLSDLIFDFEDSYKKYLHTVK
 KVKIGLYVPEPHSFQPIEWKQLVLNVSKMLRADIRKELEKYARDMRMKILKPASAHSPQVRSRGKSL
 PRRRQASPPRRLRREKSPALPEKKVADLSTLNEVGYQIRI

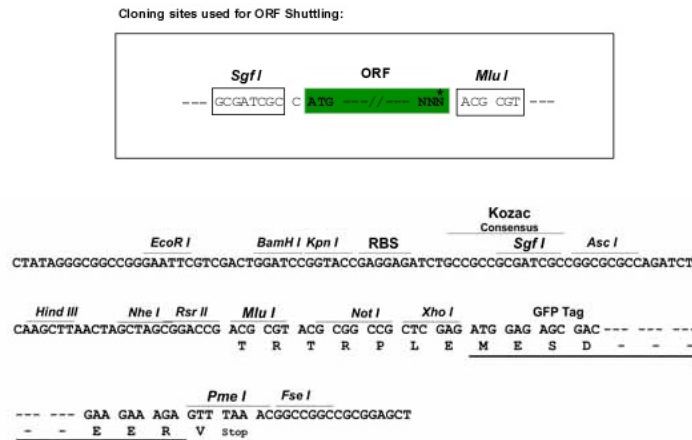
TRTRPLE - GFP Tag - V



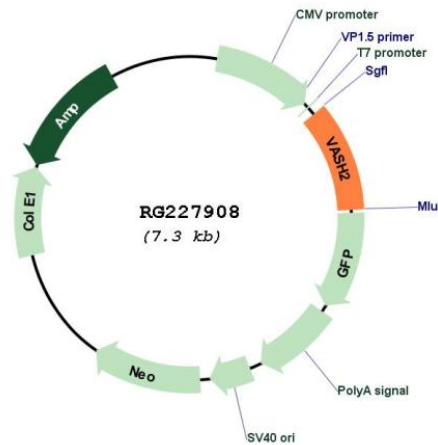
[View online »](#)

Restriction Sites: SgfI-MluI

Cloning Scheme:



Plasmid Map:



ACCN: NM_001136475

ORF Size: 753 bp

OTI Disclaimer: The molecular sequence of this clone aligns with the gene accession number as a point of reference only. However, individual transcript sequences of the same gene can differ through naturally occurring variations (e.g. polymorphisms), each with its own valid existence. This clone is substantially in agreement with the reference, but a complete review of all prevailing variants is recommended prior to use. [More info](#)

OTI Annotation: This clone was engineered to express the complete ORF with an expression tag. Expression varies depending on the nature of the gene.

Components:	The ORF clone is ion-exchange column purified and shipped in a 2D barcoded Matrix tube containing 10ug of transfection-ready, dried plasmid DNA (reconstitute with 100 ul of water).
Reconstitution Method:	<ol style="list-style-type: none">1. Centrifuge at 5,000xg for 5min.2. Carefully open the tube and add 100ul of sterile water to dissolve the DNA.3. Close the tube and incubate for 10 minutes at room temperature.4. Briefly vortex the tube and then do a quick spin (less than 5000xg) to concentrate the liquid at the bottom.5. Store the suspended plasmid at -20°C. The DNA is stable for at least one year from date of shipping when stored at -20°C.
RefSeq:	<u>NM_001136475.3</u>
RefSeq Size:	3989 bp
RefSeq ORF:	756 bp
Locus ID:	79805
UniProt ID:	<u>Q86V25</u>
Cytogenetics:	1q32.3
Gene Summary:	Tyrosine carboxypeptidase that removes the C-terminal tyrosine residue of alpha-tubulin, thereby regulating microtubule dynamics and function (PubMed:29146869). Acts as an activator of angiogenesis: expressed in infiltrating mononuclear cells in the sprouting front to promote angiogenesis (PubMed:19204325).[UniProtKB/Swiss-Prot Function]