

## Product datasheet for **RG227884**

### ITGA7 (NM\_001144996) Human Tagged ORF Clone

#### Product data:

Product Type:	Expression Plasmids
Product Name:	ITGA7 (NM_001144996) Human Tagged ORF Clone
Tag:	TurboGFP
Symbol:	ITGA7
Mammalian Cell Selection:	Neomycin
Vector:	pCMV6-AC-GFP (PS100010)
E. coli Selection:	Ampicillin (100 ug/mL)
ORF Nucleotide Sequence:	>RG227884 representing NM_001144996 Red=Cloning site Blue=ORF Green=Tags(s)

TTTTGTAATACGACTCACTATAGGGCGGCCGGGAATTCGTCGACTGGATCCGGTACCGAGGAGATCTGCC  
GCC**CGATCGCC**

ATGGCCGGGGCTCGGAGCCGCGACCCCTGGGGGGCCTCCGGGATTTGCTACCTTTTTGGCTCCCTGCTCG  
TCGAACTGCTCTTCTCACGGGCTGTGCGCTTCAATCTGGACGTGATGGGTGCCTTGC CGCAAGGAGGGCGA  
GCCAGGCAGCCTCTTCGGCTTCTCTGTGGCCCTGCACCGGCAGTTGCAGCCCCGACCCAGAGCTGGCTG  
CTGGTGGGTGCTCCCCAGGCCCTGGCTCTTCTCTGGCAGCAGGCGAATCGCACTGGAGGCCTCTTCGCTT  
GCCCGTTGAGCCTGGAGGAGACTGACTGTACAGAGTGGACATCGACAGGGAGCTGATGCAAAAAGGA  
AAGCAAGGAGAACCAGTGGTTGGGAGTCAAGTGTTCGGAGCCAGGGCCTGGGGGCAAGATTGTTACCTGT  
GCACACCGATATGAGGCAAGGCAGCGAGTGGACCAGATCCTGGAGACGCGGGATATGATTGGTTCGCTGCT  
TTGTGCTCAGCCAGGACCTGGCCATCCGGGATGAGTTGGATGGTGGGGAATGGAAGTTCTGTGAGGGACG  
CCCCAAGGCCATGAACAATTTGGGTTCTGCCAGCAGGGCACAGCTGCCGCTTCTCCCCTGATAGCCAC  
TACCTCCTCTTTGGGGCCCCAGGAACCTATAATTGGAAGGGCACGGCCAGGGTGGAGCTCTGTGCACAGG  
GCTCAGCGGACCTGGCACACCTGGACGACGGTCCCTACGAGGCGGGGGAGAGAAGGAGCAGGACCCCCG  
CCTCATCCCGTCCCTGCCAACAGCTACTTTGGCTTCTCTATTGACTCGGGGAAAGGTCTGGTGCCTGCA  
GAAGAGCTGAGCTTTGTGGCTGGAGCCCCCGCCAACCACAAGGGTGTGTGGTTCATCTGCGCAAGG  
ACAGCGCCAGTCGCTGGTGCCTGAGGTTATGCTGTCTGGGAGCGCCTGACCTCCGGCTTTGGCTACTC  
ACTGGCTGTGGCTGACCTCAACAGTGTGGCTGGCCAGACCTGATAGTGGGTGCCCCCTACTTCTTTGAG  
CGCCAAGAAGAGCTGGGGGGTGTGTGTGTACTTGAACCAGGGGGGTCACTGGGCTGGGATCTCCC  
CTCTCCGGCTCTGCGGCTCCCCTGACTCCATGTTCCGGATCAGCCTGGCTGTCTGGGGACCTCAACCA  
AGATGGCTTCCAGATATTGCAGTGGGTGCCCTTTGATGGTGTGGGAAAGTCTTCACTACCATGGG  
AGCAGCCTGGGGGTTGTGCGCAAACCTTACAGGTGTGGAGGGCAGGCTGTGGCATCAAGAGCTTCG  
GCTACTCCCTGTCAAGCAGCTTGGATATGGATGGAAACCAATACCCTGACCTGCTGGTGGGCTCCCTGGC  
TGACACCGCAGTGTCTTTCAGGGCCAGACCCATCCTCCATGTCTCCCATGAGGTCTCTATTGCTCCACGA  
AGCATCGACCTGGAGCAGCCCAACTGTGCTGGCGCCACTCGGTCTGTGTGGACCTAAGGGTCTGTTTCA  
GCTACATTGCAGTCCCCAGCAGCTATAGCCCTACTGTGGCCCTGGACTATGTGTTAGATGCGGACACAGA



[View online >](#)

```

CCGGAGGCTCCGGGGCCAGGTTCCCGTGTGACGTTCTGAGCCGTAACCTGGAAGAACCAAGCACCAG
GCCTCGGGCACCCTGTGGCTGAAGCACCAGCATGACCGAGTCTGTGGAGACGCCATGTTCCAGCTCCAGG
AAAATGTCAAAGACAAGCTTCGGGCCATTGTAGTGACCTTGTCTACAGTCTCCAGACCCCTCGGCTCCG
GCGACAGGCTCCTGGCCAGGGGCTGCCTCCAGTGGCCCCCATCTCAATGCCACCAGCCAGCACCAG
CGGGCAGAGATCCACTTCTGAAGCAAGGCTGTGGTGAAGACAAGATCTGCCAGAGCAATCTGCAGCTGG
TCCGCGCCCGCTTCTGTACCCGGGTGAGCAGCACGGAATTC AACCTCTGCCATGGATGTGGATGGAAC
AACAGCCCTGTTTGCACTGAGTGGCAGCCAGTCATTGGCTGGAGCTGATGGTCAACCAACTGCCATGCCATCG
GACCCAGCCAGCCAGGCTGATGGGGATGATGCCCATGAAGCCAGCTCCTGGTCATGCTTCTGACT
CACTGCACTACTCAGGGGTCCGGGCCCTGGACCCTGCGGAGAAGCCACTCTGCCTGTCCAATGAGAATGC
CTCCCATGTTGAGTGTGAGCTGGGAACCCCATGAAGAGAGGTGCCAGGTACCTTCTACCTCATCCTT
AGCACCTCCGGGATCAGCATTGAGACCACGGAAGTGGAGGTAGAGCTGCTGTTGGCCACGATCAGTGAGC
AGGAGTGCATCCAGTCTCTGCACGAGCCCGTGTCTTATTGAGCTGCCACTGTCCATTGCAGGAATGGC
CATTCCCAGCAACTCTTCTCTGTTGTTGGTGGAGGGGCGAGAGGCCATGCAGTCTGAGCGGGATGTG
GGCAGCAAGGTCAAGTATGAGGTCACGGTTTCCAACCAAGGCCAGTCGCTCAGAACCCTGGGCTCTGCCT
TCCTCAACATCATGTGGCCTCATGAGATTGCCAATGGGAAGTGGTTGCTGTACCAATGCAGGTTGAGCT
GGAGGGCCGGGCGAGGGCCCTGGGCAGAAAGGGCTTTGCTCTCCAGGCCAACATCTCCACTGGATGTG
GACAGTAGGGATAGGAGGCGGGGAGCTGGAGCCACCTGAGCAGCAGGAGCCTGGTGAGCGGCAGGAGC
CCAGCATGTCTGGTGGCCAGTGTCTCTGCTGAGAAGAAGAAAACATCACCTGGACTGCGCCCGGGG
CACGGCCAACTGTGTGGTGTTCAGCTGCCACTTACAGCTTTGACCGCGCGGCTGTGCTGCATGTCTGG
GGCCGTCTCTGGAACAGCACCTTCTGGAGGAGTACTCAGCTGTGAAGTCCCTGGAAGTATTGTCCGGG
CCAACATCACAGTGAAGTCTCCATAAAGAACTTGATGCTCCGAGATGCCTCCACAGTATCCCAGTGTG
GGTATACTTGGACCCCATGGCTGTGGTGGCAGAAGGAGTGCCTGGTGGGTATCCTCCTGGCTGTACTG
GCTGGGCTGCTGGTGTAGCACTGCTGGTGTCTGCTGCTGGAAGATGGGATTCTCAAACGGGCGAGC
ACCCCGAGGCCACCGTGCACCAGTACCATGCGGTTGAAGATTCTCGGGAAGACCGACAGCAGTTC AAGGA
GGAGAAGACGGGCACCATCCTGAGGAACAAGTGGGCAGCCCCGCGGGAGGGCCCGGATGCACACCCC
ATCCTGGCTGCTGACGGGCATCCCGAGCTGGGCCCGATGGGCATCCAGGGCCAGGCACCGCC

```

ACGCGTACGCGGCCGCTCGAG – GFP Tag – GTTTAA

**Protein Sequence:**

>RG227884 representing NM\_001144996

Red=Cloning site Green=Tags(s)

```

MAGARSRDPWASGICYLFGSLLVELLFSRAVAFNLDVMGALRKEGEPGSLFGFSVALHRQLQPRPQSWL
LVGAPQALALPGQQANRTGGFLFACPLSLEETDCYRVDIDQGADMQKESKENQWLGVSVRSQGGKIVTC
AHRYEARQRVDQILETRDMIGRFVLSQDLAIRDEL DGGWKFCGRPQGHEQFGFCQQGTAAAFSPDSH
YLLFGAPGTYNWKG TARVELCAQGSADLAHLDDGPYEAGGEKEQDPRIPVPANSYFGFSIDSGKGLVRA
EELSFVAGAPRANHKGAVVILRKDSASRLVPEVMLSGERLTSFGYSLAVADLNSDGPDLIVGAPYFFE
RQEELGGAVVYVYLNQGGHWAGISPLRLCGSPDSMFGISLAVLGDNLQDGFPIAVGAPFDGDGKVF IYHG
SSLGVVAKPSQVLEGEAVGIKSFYSLSGSLDMDGNQYPDLLVGLADTAVLFRARPILHVSHEVSIAPR
SIDLEQPNCAAGHSVCVDLRVCFYSYIAVPSSYSPTVALDYVLDADTDRLRGQVPRVTFILSRNLEEPKHQ
ASGTVWLKHQHDRVCGDAMFQLQENVKDKLRAIVVTL SYSLQTPRLRRQAPGQGLPPVAPILNAHQ PSTQ
RAEIHFLKQCGGEDKICQSNLQLVRARFCTRVSDTEFQPLPMDVDGTTALFALSGQPVI GLELMVTNLPS
DPAQPQADGDDAHEAQLLVMLPDSLHYSGVRALDPAEKPLCLSNENASHVECELGNPMKRG AQVTFYLIL
STSGISIIETTELEVELL LATI SEQELHPVSARARV FIELPLSIAGMAIPQQLFFSGVVRGERAMQSERDV
GSKVKYEVTVSNQGQSLRTLGS AFLNIMWPHEIANGKWLLYPMQVELEGGQGPQKGLCSPRPNILHLDV
DSRDRRRRELEPPEQEPGERQEPSMSWWPVSSAEKKNITLDCARGTANCVVFSCLPYSFDRAAVLHVW
GRLWNSTFLEEYS AVKSLEIVIVRANITVKSSIKNMLRDASTVIPVMVYLDPMVVAEGVPWWVILLAVL
AGLLVLLALLVLLWKMGGFFKRAKHPEATVPQYHAVKIPREDRQFKEEKTGTILRNNWGSPPREGPDAHP
ILAADGHPPELGPDGHPGPGTA

```

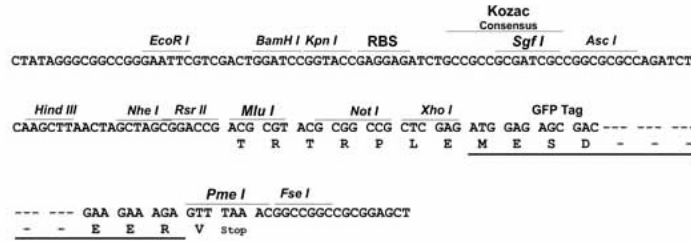
TRTRPLE – GFP Tag – V

**Restriction Sites:**

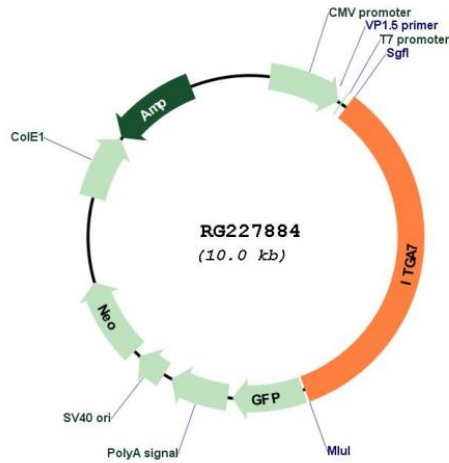
Sgfl-MluI

Cloning Scheme:

Cloning sites used for ORF Shutting:



Plasmid Map:



ACCN: NM\_001144996  
 ORF Size: 3423 bp

<b>OTI Disclaimer:</b>	Due to the inherent nature of this plasmid, standard methods to replicate additional amounts of DNA in E. coli are highly likely to result in mutations and/or rearrangements. Therefore, OriGene does not guarantee the capability to replicate this plasmid DNA. Additional amounts of DNA can be purchased from OriGene with batch-specific, full-sequence verification at a reduced cost. Please contact our customer care team at <a href="mailto:custsupport@origene.com">custsupport@origene.com</a> or by calling 301.340.3188 option 3 for pricing and delivery.
	The molecular sequence of this clone aligns with the gene accession number as a point of reference only. However, individual transcript sequences of the same gene can differ through naturally occurring variations (e.g. polymorphisms), each with its own valid existence. This clone is substantially in agreement with the reference, but a complete review of all prevailing variants is recommended prior to use. <a href="#">More info</a>
<b>OTI Annotation:</b>	This clone was engineered to express the complete ORF with an expression tag. Expression varies depending on the nature of the gene.
<b>Components:</b>	The ORF clone is ion-exchange column purified and shipped in a 2D barcoded Matrix tube containing 10ug of transfection-ready, dried plasmid DNA (reconstitute with 100 ul of water).
<b>Reconstitution Method:</b>	<ol style="list-style-type: none"> <li>1. Centrifuge at 5,000xg for 5min.</li> <li>2. Carefully open the tube and add 100ul of sterile water to dissolve the DNA.</li> <li>3. Close the tube and incubate for 10 minutes at room temperature.</li> <li>4. Briefly vortex the tube and then do a quick spin (less than 5000xg) to concentrate the liquid at the bottom.</li> <li>5. Store the suspended plasmid at -20°C. The DNA is stable for at least one year from date of shipping when stored at -20°C.</li> </ol>
<b>RefSeq:</b>	<a href="#">NM_001144996.2</a>
<b>RefSeq Size:</b>	4150 bp
<b>RefSeq ORF:</b>	3426 bp
<b>Locus ID:</b>	3679
<b>UniProt ID:</b>	<a href="#">Q13683</a>
<b>Cytogenetics:</b>	12q13.2
<b>Protein Families:</b>	Druggable Genome, Transmembrane
<b>Protein Pathways:</b>	Arrhythmogenic right ventricular cardiomyopathy (ARVC), Dilated cardiomyopathy, ECM-receptor interaction, Focal adhesion, Hypertrophic cardiomyopathy (HCM), Regulation of actin cytoskeleton

**Gene Summary:**

The protein encoded by this gene belongs to the integrin alpha chain family. Integrins are heterodimeric integral membrane proteins composed of an alpha chain and a beta chain. They mediate a wide spectrum of cell-cell and cell-matrix interactions, and thus play a role in cell migration, morphologic development, differentiation, and metastasis. This protein functions as a receptor for the basement membrane protein laminin-1. It is mainly expressed in skeletal and cardiac muscles and may be involved in differentiation and migration processes during myogenesis. Defects in this gene are associated with congenital myopathy. Alternatively spliced transcript variants encoding different isoforms have been noted for this gene. [provided by RefSeq, Feb 2009]