

Product datasheet for **RG227856**

beta COP (COPB1) (NM_001144061) Human Tagged ORF Clone

Product data:

Product Type:	Expression Plasmids
Product Name:	beta COP (COPB1) (NM_001144061) Human Tagged ORF Clone
Tag:	TurboGFP
Symbol:	COPB1
Synonyms:	BARMACS; COPB
Mammalian Cell Selection:	Neomycin
Vector:	pCMV6-AC-GFP (PS100010)
E. coli Selection:	Ampicillin (100 ug/mL)



[View online »](#)

ORF Nucleotide Sequence:

>RG227856 representing NM_001144061
 Red=Cloning site Blue=ORF Green=Tags(s)

TTTTGTAATACGACTCACTATAGGGCGGCCGGAATTCGTCGACTGGATCCGGTACCGAGGAGATCTGCC
 GCC**CGGATCGCC**

ATGACGGCGGCTGAGAACGTATGCTACACGTTAATTAACGTGCCAATGGATTGAGAACACCACATCTGAAA
 TTAGCTTAAAAAATGATCTAGAAAAAGGAGATGTAAGTCAAAGACTGAAGCTTTGAAGAAAGTAATCAT
 TATGATTCTGAATGGTAAAAAATCCTGGACTTCTGATGACCATCATTGTTTTGTGCTACCTCTTCAG
 GATCACACTATCAAGAAATTAATCTGTTATTTGGGAAATGTTCTAAAACAACTCCAGATGGGAGAC
 TTTTACATGAGATGATCCTTGTATGTATGCATACAGAAAGGATCTTCAACATCCTAATGAATTTATTTCG
 AGGATCTACTCTCGTTTTCTTTCGAAATTGAAAGAAGCAGAATTGCTAGAACCTTTAATGCCAGCTATT
 CGTGATGTTTTGGAGCATCGACACAGCTATGTTAGAAGAAATGCTGTTTTGGCCATCTATACCATCTATA
 GAAATTTTGAACATCTTATACCTGATGCTCCTGAAGTATACATGATTTTCTGGTGAATGAGAAGGATGC
 AAGTTGCAAAAGGAATGCATTTATGATGCTAATTCATGCAGATCAGGATCGAGCTTTGGATTACTTAAGT
 ACTTGCATTGATCAAGTTCAAACATTTGGAGACATTTCTGCAGCTGGTTATTGTTGAACTGATTTATAAGG
 TCTGTCATGCTAATCCATCAGAAAGAGCTCGTTTTATTGCTGCATCTATAACTTATTACAGTCATCCAG
 CCCTGCTGTAATAATGAAGCTGCTGGGACATTAGTGACACTCTCTAGTGACCAACTGCAATCAAGGCT
 GCTGCTCAGTGTTACATTGATTTAATTATTAAGGAGAGCGACAACAATGTAAGTCAATGTTTTGGATC
 GCTTGATAGAATTAAGAGCATCCTGCTCATGAACGAGTACTACAGGATCTGGTTATGGATATCCTAAG
 AGTATTGAGCACACCAGACTTAGAAGTACGAAAGAAAATCTGCAGTTAGCACTGGATCTTGTCTCTTCT
 AGAAATGTTGAAGAGCTGGTTATTGCTGAAAGGAAGTATAAAAAACAATAATGTGTCTGAGCATG
 AAGTACTGACAAATACAGACAACCTCTAGTGCAGAACATTGCATTCCTGTTCTGTCCGATTTCCGATAT
 GGCTGCAAAATGTTATTCCTGTGTTAATGGAATTTCTCAGTGACAACAACGAAGCAGCAGCTGCTGATGTC
 TTGGAGTTTGTTCGTGAAGCCATTCAGCGCTTTGATAACCTGAGAATGCTTATTGTTGAGAAGATGCTTG
 AAGCTTTTCATGCTATTAATCTGTCAAGATTTACCGAGGAGCATTATGGATCCTGGGAGAATACTGTAG
 TACCAAGGAAGACATTCAGAGTGTGATGACTGAGATCCGCAGGTCCTTGGAGAGATCCCAATTGTAGAG
 TCAGAAATAAGAAAGAGCTGGTGAATTAACCTGAAGAAGAAATAACTGTAGGGCCAGTTCCAGAAAT
 TGGTTACTGAAATGGGTACCTATGCAACTCAGAGTGCCCTTAGCAGTTCTAGACCCACCAAGAAAGAGGA
 AGACAGACCTCCCTTGGAGGATTCCTTCTGGATGGAGATTTCTTTGTTGCTGCCTCCCTTGCCACAAC
 CTGACCAAGATTGCATTGCGCTATGTAGCTTTGGTTTCAGGAGAAGAAAAGCAAAATTTCTTTGTTGCTG
 AGGCTATGTTGCTCATGGCTACTATCCTGCATTTGGGAAAATCCTCTCTTCTTAAGAAGCCAATTAAGTGA
 TGATGATGGATCGAATTTCCCTGTGCCTCAAGGCTTTGCTGATGTTTACCTTTAATGAATGACATT
 TTCAATAAGGAATGCAGACAGTCCCTTTCTCACATGTTATCTGCTAAACTAGAAGAAGAGAAATTAATCCC
 AAAAGAAAGAAATCTGAAAAGAGGAATGTGACAGTACAGCTGATGACCCCATTTCTTTCATGCAACTAAC
 TGCTAAGAATGAAATGAACTGCAAGGAAGATCAGTTTCAGCTGAGTTTACTGGCAGCAATGGGTAACACA
 CAGAGGAAAGAGGCAGCAGATCCCCTAGCATCTAAACTTAACAAGGTCACCCAATTGACAGGTTTCTCAG
 ATCCTGTATATGCAGAAGCTTACGTTTATGTCAACCAATATGATATTGCTCCTGGATGACTTGTGTTGAA
 CCAAAACCAGTGATACTTTGCAGAATTGCACATTAAGAAGTACACTAGGGGATCTGAACTTGTGGAA
 AAGCCGTCTCCTTTGACTCTTGTCTCCTCATGACTTCGCAAAATATAAGCTAACGTCAAAGTAGCATCAA
 CAGAAAATGGAATAATTTTTGGTAATATAGTTTATGATGCTCTGGAGCAGCAAGTACAGAAAATTTGTG
 GTTTCTCAGTGATTTACATCGACATCATGGACTATATCCAGCCTGCAACTTGCAGTATGAGAAATTC
 CGTCAGATGTGGGCCAATTTGAATGGGAAAACAAAGTGACAGTTAACACCAACATGGTTGATTTAAATG
 ACTACTTACAGCACATATAAAGTCAACCAATATGAAATGCTGACTCCAGAAAAGGCCCTTTCTGGTTA
 CTGTGGCTTTATGGCAGCAACCTTTATGCTCGTTCCATATTTGGTGAAGATGCACTTGCAAATGTCAGC
 ATTGAGAAGCCAATTCACAGGGACCAGATGCTGCTGTTACCGGCCATATAAGAATTCGTGCAAAGAGCC
 AGGAATGGCCTTAAGTCTTGGAGATAAAATCAACTTGTACAGAAAGAAAAGTAGTATA

ACGCGTACGCGGCCGCTCGAG - GFP Tag - GTTTAA

Protein Sequence: >RG227856 representing NM_001144061
 Red=Cloning site Green=Tags(s)

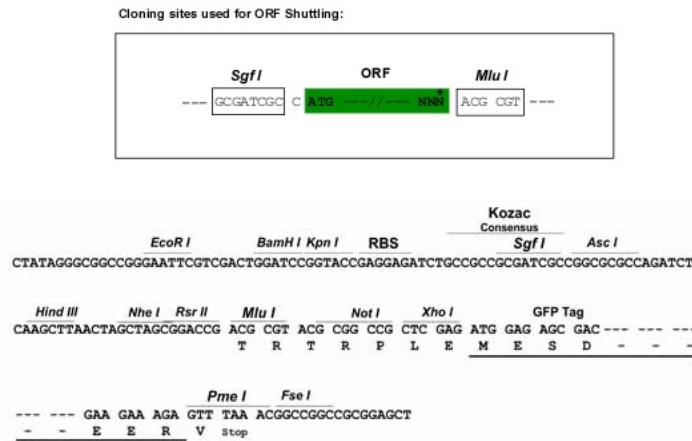
MTAAENVCYTLINVPMDSEPPSEISLKNLDEKGDVKSKEALKKVIIMILNGEKLPGLLMTIIRFVLPLO
 DHTIKKLLLWFWEIVPKTTPDGRLLHEMILVCDAYRKDLQHPNEFIRGSTLRFLCKLKEAELLEPLMPAI
 RACLEHRHSYVRRNAVLAIYTIYRNFEHLIPDAPELIHDFLVNEKDASCKRNAFMMLIHADQDRALDYL
 TCIDQVQTFGDILQLVIVELIYKVCANPSEARARFIRCIYNLLQSSSPAVKYEAAGTLVTLSSAPTAIKA
 AAQCYIDLIIKESDNNVKLIVLDRLIELKEHPAHERVLQDLVMDILRVLSTPDLEVRKKTLLALDLVSS
 RNVEELVIVLKKEVIKTNVSEHEDTDKYRQLLVRTLHSCSVRFPDMAANVIVLMEFLSDNNEAAAADV
 LEFVREAIQRFNLRMLIVEKMLEVFHAIKSVKIYRGALWILGEYCSTKEDIQSVMTIIRSLGEIPIVE
 SEIKKEAGELKPEEEITVGPVQKLVTEMGTYATQSALSSSRPTKKEEDRPPLRGFLLDGDFVVAASLATT
 LTKIALRYVALVQEKKKQNSFVAEAMLLMATILHLGKSSLPKKPIITDDDVRISLCLKVLECSPLMNDI
 FNKECRQSLSHMLSAKLEEEKLSQKKESEKRNVTVQDDPISFMQLTAKNEMNCKEDQFQLSLLAAMGNT
 QRKEAADPLASKLNKVTQLTGFSDPVYAEAYVHVNOYDIVLDVLDVNVNQTSDTLQNCTLELATLGDCLKVE
 KPSPPLTAPHDFANIKANVKVASTENGIIFGNIVYDVSGAASDRNCVVLSDIHIDIMDYIQPATCTDAEF
 RQMWAEFEWENKVTVNTNMVDLNDYLQHILKSTNMKCLTPEKALSGYCGFMAANLYARSIFGEDALANVS
 IEKPIHQGPDAAVTGHIRIRAKSQGMALSLGDKINLSQKKTISI

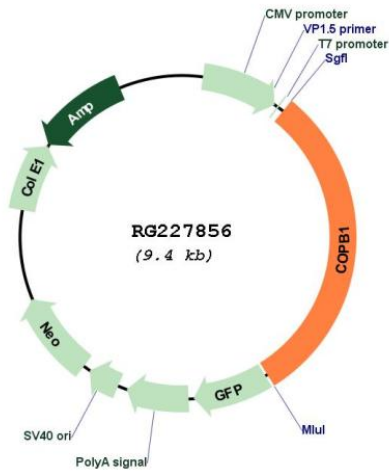
TRTRPLE - GFP Tag - V

Restriction Sites:

SgfI-MluI

Cloning Scheme:



Plasmid Map:


ACCN: NM_001144061

ORF Size: 2859 bp

OTI Disclaimer: The molecular sequence of this clone aligns with the gene accession number as a point of reference only. However, individual transcript sequences of the same gene can differ through naturally occurring variations (e.g. polymorphisms), each with its own valid existence. This clone is substantially in agreement with the reference, but a complete review of all prevailing variants is recommended prior to use. [More info](#)

OTI Annotation: This clone was engineered to express the complete ORF with an expression tag. Expression varies depending on the nature of the gene.

Components: The ORF clone is ion-exchange column purified and shipped in a 2D barcoded Matrix tube containing 10ug of transfection-ready, dried plasmid DNA (reconstitute with 100 ul of water).

Reconstitution Method:

1. Centrifuge at 5,000xg for 5min.
2. Carefully open the tube and add 100ul of sterile water to dissolve the DNA.
3. Close the tube and incubate for 10 minutes at room temperature.
4. Briefly vortex the tube and then do a quick spin (less than 5000xg) to concentrate the liquid at the bottom.
5. Store the suspended plasmid at -20°C. The DNA is stable for at least one year from date of shipping when stored at -20°C.

RefSeq: [NM_001144061.2](#)

RefSeq Size: 3429 bp

RefSeq ORF: 2862 bp

Locus ID: 1315

UniProt ID: [P53618](#)

Cytogenetics: 11p15.2

Gene Summary:

This gene encodes a protein subunit of the coatomer complex associated with non-clathrin coated vesicles. The coatomer complex, also known as the coat protein complex 1, forms in the cytoplasm and is recruited to the Golgi by activated guanosine triphosphatases. Once at the Golgi membrane, the coatomer complex may assist in the movement of protein and lipid components back to the endoplasmic reticulum. Alternatively spliced transcript variants have been described. [provided by RefSeq, Jan 2009]