

## Product datasheet for **RG227829**

### **P311 (NREP) (NM\_001142476) Human Tagged ORF Clone**

#### Product data:

**Product Type:** Expression Plasmids  
**Product Name:** P311 (NREP) (NM\_001142476) Human Tagged ORF Clone  
**Tag:** TurboGFP  
**Symbol:** NREP  
**Synonyms:** C5orf13; D4S114; P311; PRO1873; PTZ17; SEZ17  
**Mammalian Cell Selection:** Neomycin  
**Vector:** pCMV6-AC-GFP (PS100010)  
**E. coli Selection:** Ampicillin (100 ug/mL)  
**ORF Nucleotide Sequence:** >RG227829 representing NM\_001142476  
Red=Cloning site Blue=ORF Green=Tags(s)

TTTTGTAATACGACTCACTATAGGGCGGCCGGAATTCGTCGACTGGATCCGGTACCGAGGAGATCTGCC  
GCC**CGATCGCC**

ATGGTTTATTACCCAGAACTCTTTGTCTGGGTCAGTCAAGAACCATTTCCAAACAAGGACATGGAGGGAA  
GGCTTCC**TAAGGGAAGACTTCTGTCCCAAAGGAAGTGAACCGCAAGAAGACGATGAGACAAACGCTGC**  
CTCCCTGACTCCACTGGGCAGCAGTGA**ACTCCGCTCCCAAGAATCAGTTACCTCCACTTTTT**

**ACGCGTACGCGGCCGCTCGAG** - GFP Tag - GTTTAA

**Protein Sequence:** >RG227829 representing NM\_001142476  
Red=Cloning site Green=Tags(s)

MVYYPELFWVVSQEPFPNKDMEGRLPKGRLPVPKEVNRKKNDETNAASLTPLGSSELRSRISYLHFF

**TRTRPLE** - GFP Tag - V

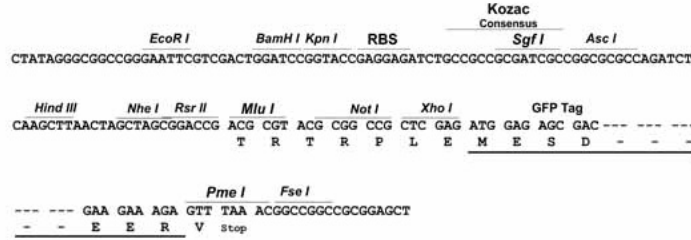
**Restriction Sites:** Sgfl-MluI



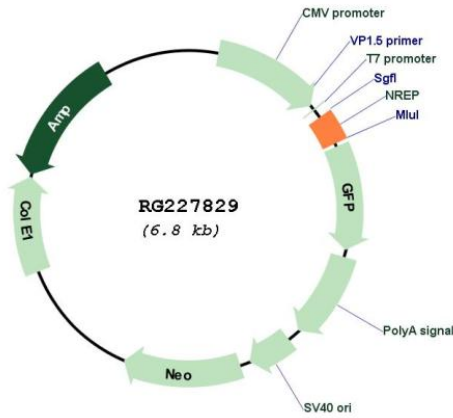
[View online »](#)

Cloning Scheme:

Cloning sites used for ORF Shutting:



Plasmid Map:



ACCN: NM\_001142476

ORF Size: 204 bp

<b>OTI Disclaimer:</b>	The molecular sequence of this clone aligns with the gene accession number as a point of reference only. However, individual transcript sequences of the same gene can differ through naturally occurring variations (e.g. polymorphisms), each with its own valid existence. This clone is substantially in agreement with the reference, but a complete review of all prevailing variants is recommended prior to use. <a href="#">More info</a>
<b>OTI Annotation:</b>	This clone was engineered to express the complete ORF with an expression tag. Expression varies depending on the nature of the gene.
<b>Components:</b>	The ORF clone is ion-exchange column purified and shipped in a 2D barcoded Matrix tube containing 10ug of transfection-ready, dried plasmid DNA (reconstitute with 100 ul of water).
<b>Reconstitution Method:</b>	<ol style="list-style-type: none"><li>1. Centrifuge at 5,000xg for 5min.</li><li>2. Carefully open the tube and add 100ul of sterile water to dissolve the DNA.</li><li>3. Close the tube and incubate for 10 minutes at room temperature.</li><li>4. Briefly vortex the tube and then do a quick spin (less than 5000xg) to concentrate the liquid at the bottom.</li><li>5. Store the suspended plasmid at -20°C. The DNA is stable for at least one year from date of shipping when stored at -20°C.</li></ol>
<b>RefSeq:</b>	<a href="#">NM_001142476.1</a> , <a href="#">NP_001135948.1</a>
<b>RefSeq Size:</b>	2201 bp
<b>RefSeq ORF:</b>	207 bp
<b>Locus ID:</b>	9315
<b>UniProt ID:</b>	<a href="#">Q16612</a>
<b>Cytogenetics:</b>	5q22.1
<b>Gene Summary:</b>	May have roles in neural function. Ectopic expression augments motility of gliomas. Promotes also axonal regeneration (By similarity). May also have functions in cellular differentiation (By similarity). Induces differentiation of fibroblast into myofibroblast and myofibroblast ameboid migration. Increases retinoic-acid regulation of lipid-droplet biogenesis (By similarity). Down-regulates the expression of TGFB1 and TGFB2 but not of TGFB3 (By similarity). May play a role in the regulation of alveolar generation.[UniProtKB/Swiss-Prot Function]