

Protein Sequence: >RG227827 representing NM_001144035
 Red=Cloning site Green=Tags(s)

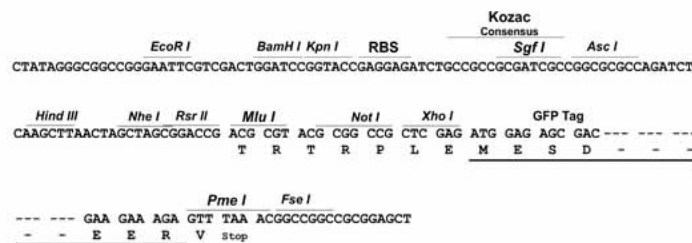
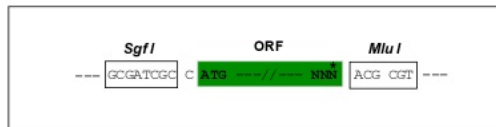
MALPPGPAALRHTLLLLPALLSSGWGELEPQIDGQTTWAERALRENERHAFTRVAGGPGTPRLAWYLDGQ
 LQEASTSRLLSVGGAEFSGGTSTFTVTAHRAQHELNCSLQDPRSGRSANASVILNVQFKPEIAQVGAKYQ
 EAQGPGLLVVLFALVRANPPANVTWIDQDGPVTVNTSDFLVLDAQNYPWLTNHTVQLQLRSLAHNLSVVA
 TNDVGVTSASLPAPGPSRHPSLISSDSNNLKLNNVRLPRENMSLPSNLQLNDLTPDSRAVKPADRQMAQN
 NSRPELLDPEPGGLLTSRGFIRLPVLGYIYRVSSVSSDEIWL

TRTRPLE - GFP Tag - V

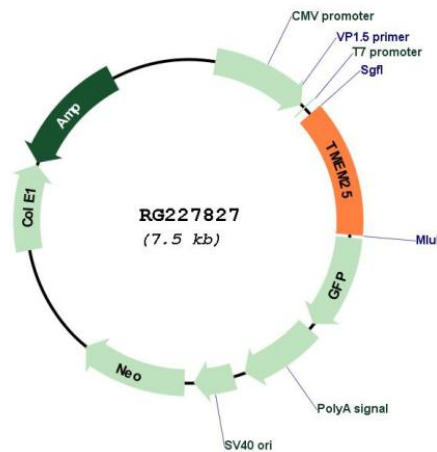
Restriction Sites: SgfI-MluI

Cloning Scheme:

Cloning sites used for ORF Shutting:



Plasmid Map:



ACCN: NM_001144035

ORF Size: 966 bp

OTI Disclaimer:	The molecular sequence of this clone aligns with the gene accession number as a point of reference only. However, individual transcript sequences of the same gene can differ through naturally occurring variations (e.g. polymorphisms), each with its own valid existence. This clone is substantially in agreement with the reference, but a complete review of all prevailing variants is recommended prior to use. More info
OTI Annotation:	This clone was engineered to express the complete ORF with an expression tag. Expression varies depending on the nature of the gene.
Components:	The ORF clone is ion-exchange column purified and shipped in a 2D barcoded Matrix tube containing 10ug of transfection-ready, dried plasmid DNA (reconstitute with 100 ul of water).
Reconstitution Method:	<ol style="list-style-type: none">1. Centrifuge at 5,000xg for 5min.2. Carefully open the tube and add 100ul of sterile water to dissolve the DNA.3. Close the tube and incubate for 10 minutes at room temperature.4. Briefly vortex the tube and then do a quick spin (less than 5000xg) to concentrate the liquid at the bottom.5. Store the suspended plasmid at -20°C. The DNA is stable for at least one year from date of shipping when stored at -20°C.
RefSeq:	NM_001144035.1 , NP_001137507.1
RefSeq Size:	2416 bp
RefSeq ORF:	969 bp
Locus ID:	84866
UniProt ID:	Q86YD3
Cytogenetics:	11q23.3
Protein Families:	Transmembrane
Gene Summary:	In neurons, modulates the degradation of NMDA receptor GRIN2B subunit. Plays a role in the regulation of neuronal excitability.[UniProtKB/Swiss-Prot Function]