

Product datasheet for **RG227818**

KLRAQ (PPP1R21) (NM_001135629) Human Tagged ORF Clone

Product data:

| | |
|---------------------------|---|
| Product Type: | Expression Plasmids |
| Product Name: | KLRAQ (PPP1R21) (NM_001135629) Human Tagged ORF Clone |
| Tag: | TurboGFP |
| Symbol: | KLRAQ |
| Synonyms: | CCDC128; KLRAQ1 |
| Mammalian Cell Selection: | Neomycin |
| Vector: | pCMV6-AC-GFP (PS100010) |
| E. coli Selection: | Ampicillin (100 ug/mL) |



[View online »](#)

**ORF Nucleotide
Sequence:**

>RG227818 representing NM_001135629
 Red=Cloning site Blue=ORF Green=Tags(s)

TTTTGTAATACGACTCACTATAGGGCGGCCGGAATTCGTCGACTGGATCCGGTACCGAGGAGATCTGCC
 GCC**CGCATCGCC**

ATGGCCTCGGCTGAGTTGCAGGGGAAGTACCAGAAGCTGGCTCAGGAGTACTCGAAGCTTCGGGCTCAGA
 ATCAGGTTCTGAAAAAGGTGTTGTGGATGAACAAGCAAATTCGCAGCTTTAAAGGAGCAACTGAAAAAT
 GAAGGATCAGTCATTGAGAAAACTACAACAGGAAATGGACAGTTTGACATTTTCGAAATCTGCAGCTTGCC
 AAGAGGGTAGAACTACTTCAAGATGAACTAGCTCTAAGTGAACCACGAGGCAAGAAAAACAAGAAAAGTG
 GAGAATCTTCTCAGTTGAGTCAAGAGCAGAAGAGTGTCTTTGATGAAGATCTGCAAAAAGAAGATAGA
 AGAGAATGAACGGTTGCATATACAATTTTTGAAGCTGATGAGCAGCACAAAGCATGTGGAAGCAGAGCTG
 AGGAGTCGACTGGCCACTCTGGAGACAGAAGCAGCCAGCACCAAGCTGTGGTTGACGGTCTCACCCGGA
 AGTACATGGAAACCAATTGAGAAGCTGCAGAACGACAAGGCTAACTAGAAGTGAATCTCAGACTCTAGA
 AAAGGAAGCCAAGGAATGTCGACTTCGAACGGAAGAATGTCAATTACAGTTAAAGACTCTTCATGAAGAT
 TTGTCAGGTAGATTAGAGGAATCCTTATCAATCATCAATGAAAAAGTACCTTTAATGATACAAAATATA
 GTCAGTACAACGCTCTGAACGTTCCACTCCACAATAGGAGACACCAGCTGAAGATGCGAGATATTGCTGG
 GCAGGCCCTGGCTTTTGTTCAGGATCTTGTGACGGCTCTTCTAACTTTTCATACCTACACAGAACAGAGG
 ATTCAAATTTTTCTGTTGATTCTGCCATTGACACTATATCTCCATTGAATCAGAAGTTCTCACAATACC
 TTCATGAAAAATGCGTCTATGTCGCCCTCTTGAGGAAGGAATGCTTCATTTATTTGAAAGTATCACTGA
 GGATACTGTGACTGTCTTGAGACAACGTGAAATGAAAATTTTTCAGAACACTTAACCTCCTACATA
 TGTTTTCTTAGGAAGATCTTCCCTATCAGTTAAAAAGTTTAGAAGAAGAATGTGAATCCTCTCTTTGCA
 CATCTGCGTTAAGAGCCAGGAATCTAGAGCTGTCCAGGACATGAAAAAATGACAGCTGTGTTTGAGAA
 GCTGCAGACTTACATAGCTCTTCTTGCCTTGCCAAAGTACAGAGCCAGATGGACTCCTTCGGACAAACTAC
 AGTTCTGTGTTAACAAATGTTGGTGTCTGCTGCTGATGTTTTCATGACGTTATGAAAAGATATTTCCAAAC
 ATTATAGTCAAAAAGCTGCAATAGAGCATGAACTTCCAACAGCAACACAGAAGCTGATAACAATAATGA
 CTGTATCCTGTCATCAGTAGTGGCATTAAACAAATGGAGCAGGAAAGATTGCATCCTTCTTCAGCAACAAT
 TTGGACTACTTCATTGCTTCACTGAGCTATGGACCTAAGGCAGCGAGTGGATTTCATTAGTCTCTTTGAG
 CTGAATGCATGCTACAGTATAAGAAAAAGCTGCTGCCTATATGAAGTCTTTGAGAAAGCCCTCTTGGAA
 GTCTGTGCCTTATGAAGAAGCACTGGCAAACCGCCGCATCCTTCTCAGCTCTACTGAAAGTCGAGAAGGC
 CTTGCACAGCAAGTTCAACAGAGTTTGAAAAGATTTCTAACTGGAGCAGGAAAAAGAACATTGGATGT
 TGGAAAGCACAATTAGCCAAAATCAAGCTAGAGAAAGAAAACCAGCGAATTGCAGATAAGCTGAAGAATAC
 AGGTAGTGCCAGCTGGTTGGGCTGGCCAGGAAAATGCTGCTGTGTCAAATACTGCTGGCCAGGATGAA
 GCCACAGCTAAGGCTGTGTTGGAGCCATTAGAGCACCAGTCTAATTGGGACTTTAACCAGGACATCTG
 ACAGTGAGGTTCCAGATGTGGAATCTCGTGAAGACTTAATTAATAATCACTACATGGCAAGGATAGTGGAA
 ACTTACGTCTCAGTTGCAGCTGGCTGACAGTAAGTCAAGTGCATTTTTATGCCGAGTGCCGAGCACTGTCT
 AAAAGACTGGCCTTGGCTGAAAAGTCTAAGGAAGCATTGACAGAAGAAAATGAACTTGCCAGTCAGAACA
 TCAGCAGACTTCAGGATGAGCTGACAACCTACCAAGAGGAGTTACGAGGATCAGTTAAGTATGATGAGTGA
 CCACCTGTGCAGCATGAATGAGACATTATCTAACAGAGAGAAGAGATTGACACACTAAAGATGTCCAGT
 AAGGGGAATTTAAAAAGAACAAGAGTCTGA

ACGCGTACGCGGCCGCTCGAG – GFP Tag – GTTTAA

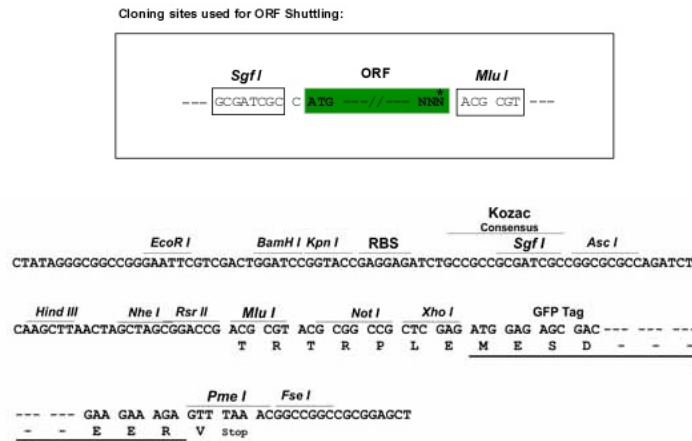
Protein Sequence: >RG227818 representing NM_001135629
Red=Cloning site Green=Tags(s)

```
MASAE LQGYQKLAQEY SKLRAQNQVLKKG VVDEQANSAALKEQLKMKDQSLRKLQQEMDSL TFRNLQLA
KRVELLQDELALSEPRGKKNKSGESSQLSQEQKSVFDEDLQKKIEENERLHIQFFEADEQHKHVEAEL
RSRLATLETEAAQHQA VVDGLTRKYMETIEKLQNDKAKLEVKSQTLEKEAKECRLRTEECQLQLKTLHED
LSGRLEESLSIINEKVPFN DTKYSQYNALNVPLHNRRHQ LKMRDIAGQALAFVQDLVTALLNFHTYTEQR
IQIFPVDSAIDTISPLNQKFSQYLHENASYVRPLEEGMLHLFESITEDTVTVLETTVKLKTFSEHLTSYI
CFLRKILPYQLKSL EEECESSLCT SALRARNLELSQDMKMTAVFEKLQTYIALLALPSTEPDGLLR TNY
SSVLTNVGAALHGFHDVMKDISKHYSQKAAIEHELPTATQKLIT TNDCILSSVVALTNGAGKIASFFSNN
LDYFIASLSYGPKAASGFI SPLSAECMLQYKKAAYMKSLRKP LLESVPYEEALANRRILL SSTESREG
LAQQVQQSLEKISKLEQEKEHWML EAQLAKIKLEKENQRIADKLKNTGSAQLVGLAQENAAVSNTAGQDE
ATAKAVLEPIQSTSLIGTL TRTSDSEVPDVESREDLIK NHYMARIVELTSQLQLADSKSVHFYAECRALS
KRLALAEKSKEALTEEMKLASQNI SRLQDELTTTKRSYEDQLS MMSDHLCSMNETLSKQREEIDTLKMSS
KGNSKKNKSR
```

TRTRPLE - GFP Tag - V

Restriction Sites: SgfI-MluI

Cloning Scheme:



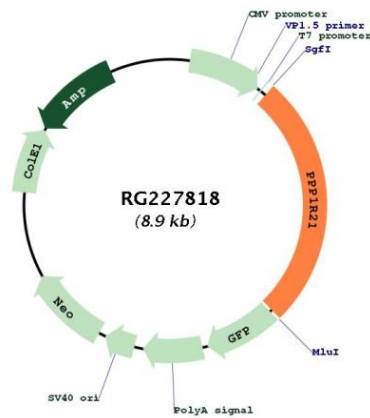
ACCN: NM_001135629

ORF Size: 2340 bp

OTI Disclaimer: The molecular sequence of this clone aligns with the gene accession number as a point of reference only. However, individual transcript sequences of the same gene can differ through naturally occurring variations (e.g. polymorphisms), each with its own valid existence. This clone is substantially in agreement with the reference, but a complete review of all prevailing variants is recommended prior to use. [More info](#)

OTI Annotation: This clone was engineered to express the complete ORF with an expression tag. Expression varies depending on the nature of the gene.

| | |
|-------------------------------|---|
| Components: | The ORF clone is ion-exchange column purified and shipped in a 2D barcoded Matrix tube containing 10ug of transfection-ready, dried plasmid DNA (reconstitute with 100 ul of water). |
| Reconstitution Method: | <ol style="list-style-type: none"> 1. Centrifuge at 5,000xg for 5min. 2. Carefully open the tube and add 100ul of sterile water to dissolve the DNA. 3. Close the tube and incubate for 10 minutes at room temperature. 4. Briefly vortex the tube and then do a quick spin (less than 5000xg) to concentrate the liquid at the bottom. 5. Store the suspended plasmid at -20°C. The DNA is stable for at least one year from date of shipping when stored at -20°C. |
| RefSeq: | <u>NM_001135629.3</u> |
| RefSeq Size: | 3181 bp |
| RefSeq ORF: | 2343 bp |
| Locus ID: | 129285 |
| UniProt ID: | <u>Q6ZMI0</u> |
| Cytogenetics: | 2p16.3 |
| Gene Summary: | Putative regulator of protein phosphatase 1 (PP1) activity (PubMed:19389623). May play a role in the endosomal sorting process or in endosome maturation pathway (PubMed:30520571).[UniProtKB/Swiss-Prot Function] |

Product images:


Circular map for RG227818