

Product datasheet for **RG227799**

HSD17B13 (NM_001136230) Human Tagged ORF Clone

Product data:

Product Type: Expression Plasmids
Product Name: HSD17B13 (NM_001136230) Human Tagged ORF Clone
Tag: TurboGFP
Symbol: HSD17B13
Synonyms: HMFN0376; NIIL497; SCDR9; SDR16C3
Mammalian Cell Selection: Neomycin
Vector: pCMV6-AC-GFP (PS100010)
E. coli Selection: Ampicillin (100 ug/mL)
ORF Nucleotide Sequence: >RG227799 representing NM_001136230
 Red=Cloning site Blue=ORF Green=Tags(s)

TTTTGTAATACGACTCACTATAGGGCGGCCGGAATTCGTCGACTGGATCCGGTACCGAGGAGATCTGCC
 GCC**CGATCGCC**

ATGAACATCATCCTAGAAATCCTTCTGCTTCTGATCACCATCATCTACTCCTACTGGAGTCGTTGGTGA
 AGTTTTTCATTCCTCAGAGGAGAAAATCTGTGGCTGGGGAGATTGTTCTCATTACTGGAGCTGGGCATGG
 AATAGGCAGGCAGACTACTTATGAATTTGCAAACGACAGAGCATATTGGTTCTGTGGGATTAATAAG
 GTGAAGAAAGAAGTGGGTGATGTAACAATCGTGGTGAATAATGCTGGGACAGTATATCCAGCCGATCTTC
 TCAGCACCAAGGATGAAGAGATTACCAAGACATTTGAGGTCAACATCCTAGGACATTTTTGGATCACAAA
 AGCACTTCTTCATCGATGATGGAGAGAAATCATGGCCACATCGTCACAGTGGCTTCAGTGTGCGGCCAC
 GAAGGGATTCTTACCTCATCCCATATTGTTCCAGCAAATTTGCCGCTGTTGGCTTTCACAGAGGCTCTGA
 CATCAGAACTTCAGGCCTTGGGAAAACTGGTATCAAAACCTCATGTCTCTGCCAGTTTTTGTGAATAC
 TGGGTTACCAAAAAATCCAAGCACAAGATTATGGCCTGTATTGGAGACAGATGAAGTCGTAAGAAGTCTG
 ATAGATGGAATACTTACCAATAAGAAAATGATTTTTGTTCCATCGTATATCAATATCTTCTGAGACTAC
 AGAAGTTTCTTCTGAACGCGCCTCAGCGATTTAAATCGTATGCAGAATATTCAATTTGAAGCAGTGGT
 TGGCCACAAAATCAAAATGAAA

ACGCGTACGCGGCCGCTCGAG - GFP Tag - GTTTAA



[View online »](#)

Protein Sequence: >RG227799 representing NM_001136230
 Red=Cloning site Green=Tags(s)

MNIILEILLLLITIIYSYLESLVKFFIPQRRKSVAGEIVLITGAGHGIGRQTTYEFAKRQSILVLWDINK
 VKKEVGDVTIVVNNAGTVYPADLLSTKDEEITKTFEVNILGHFWITKALLPSMMERNHGHIVTVASVCGH
 EGIPYLIPYCSSKFAAVGFHRGLTSELQALGKTGIKTSCLCPVFVNTGFTKNPSTRLWPVLETDEVVRS
 IDGILTNNKMIFVPSYINIFLRLQKFLPERASAILNRMQNIQFEAVVGHKIKMK

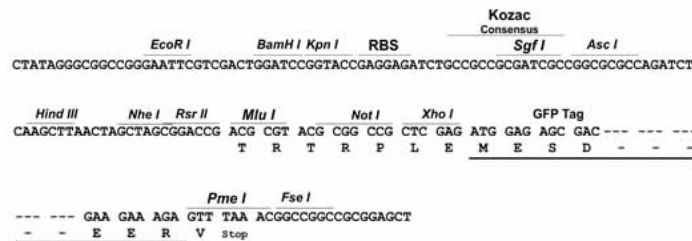
TRTRPLE - GFP Tag - V

Chromatograms: https://cdn.origene.com/chromatograms/ja2542_c04.zip

Restriction Sites: SgfI-MluI

Cloning Scheme:

Cloning sites used for ORF Shutting:



ACCN: NM_001136230

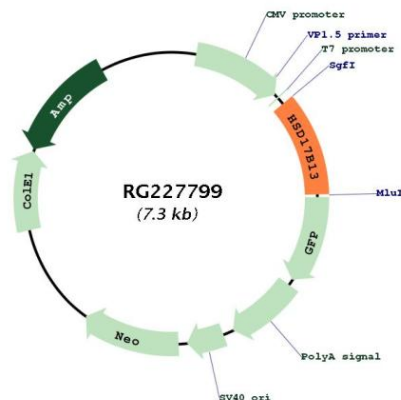
ORF Size: 792 bp

OTI Disclaimer: Due to the inherent nature of this plasmid, standard methods to replicate additional amounts of DNA in E. coli are highly likely to result in mutations and/or rearrangements. Therefore, OriGene does not guarantee the capability to replicate this plasmid DNA. Additional amounts of DNA can be purchased from OriGene with batch-specific, full-sequence verification at a reduced cost. Please contact our customer care team at custsupport@origene.com or by calling 301.340.3188 option 3 for pricing and delivery.

The molecular sequence of this clone aligns with the gene accession number as a point of reference only. However, individual transcript sequences of the same gene can differ through naturally occurring variations (e.g. polymorphisms), each with its own valid existence. This clone is substantially in agreement with the reference, but a complete review of all prevailing variants is recommended prior to use. [More info](#)

OTI Annotation: This clone was engineered to express the complete ORF with an expression tag. Expression varies depending on the nature of the gene.

Components:	The ORF clone is ion-exchange column purified and shipped in a 2D barcoded Matrix tube containing 10ug of transfection-ready, dried plasmid DNA (reconstitute with 100 ul of water).
Reconstitution Method:	<ol style="list-style-type: none"> 1. Centrifuge at 5,000xg for 5min. 2. Carefully open the tube and add 100ul of sterile water to dissolve the DNA. 3. Close the tube and incubate for 10 minutes at room temperature. 4. Briefly vortex the tube and then do a quick spin (less than 5000xg) to concentrate the liquid at the bottom. 5. Store the suspended plasmid at -20°C. The DNA is stable for at least one year from date of shipping when stored at -20°C.
RefSeq:	<u>NM_001136230.3</u>
RefSeq Size:	2287 bp
RefSeq ORF:	795 bp
Locus ID:	345275
UniProt ID:	<u>Q7Z5P4</u>
Cytogenetics:	4q22.1
Protein Families:	Druggable Genome, Secreted Protein, Transmembrane

Product images:


Circular map for RG227799