

Product datasheet for **RG227788**

NELL2 (NM_001145109) Human Tagged ORF Clone

Product data:

Product Type:	Expression Plasmids
Product Name:	NELL2 (NM_001145109) Human Tagged ORF Clone
Tag:	TurboGFP
Symbol:	NELL2
Synonyms:	NRP2
Mammalian Cell Selection:	Neomycin
Vector:	pCMV6-AC-GFP (PS100010)
E. coli Selection:	Ampicillin (100 ug/mL)



[View online »](#)

ORF Nucleotide Sequence:

>RG227788 representing NM_001145109
 Red=Cloning site Blue=ORF Green=Tags(s)

TTTTGTAATACGACTCACTATAGGGCGGCCGGAATTCGTCGACTGGATCCGGTACCGAGGAGATCTGCC
 GCC**CGGATCGCC**

ATGGAACGGGACTGGGTGCTCCGCTATTTAAAGCTTGGCTGCTGATCTCAGTTTGGGGCTTGGTGTGG
 ACCCTTCCCTACAGATTGACGTCTTAACAGAGTTAGAACTTGGGAGTCCACGACCGGAGTGCCTCAGGT
 CCCGGGGCTGCATAATGGGACGAAAGCCTTTCTCTTTCAAGATACTCCCAGAAGCATAAAAGCATCCACT
 GCTACAGCTGAACAGTTTTTTTTCAGAAGCTGAGAAATAAACATGAATTTACTATTTTGGTGACCTAAAAAC
 AGACCCACTTAAATTCAGGAGTTATTCTCTCAATTCACCACTTGGATCACAGGTACCTGGAAGTGGAAAG
 TAGTGGCCATCGGAATGAAGTCAGACTGCATTACCGCTCAGGCAGTCACCGCCCTCACACAGAAGTGTTC
 CCTTACATTTTGGCTGATGACAAGTGGCACAAGCTCTCCTTAGCCATCAGTGCTTCCATTTGATTTTAC
 ACATTGACTGCAATAAAATTTATGAAAGGGTAGTAGAAAAGCCCTCCACAGACTTGCTCTAGGCACAAC
 ATTTTGGCTAGGACAGAGAAATAATGCGCATGGATATTTTAAGGGTATAATGCAAGATGTCCAATTA
 GTCATGCCCCAGGGATTTATTGCTCAGTGCCAGATCTTAATCGACCTGTCCAAGTGGCAATGACTTCC
 ATGGACTTGTGCAGAAAATCATGGAGCTACAGGATATTTAGCCAAAACATCAGCCAAGCTGTCTCGAGC
 TGAACAGCGAATGAATAGATTGGATCAGTGCTATTGTGAAAGGACTTGCACCATGAAGGGAACCACTAC
 CGAGAATTTGAGTCTGGATAGACGGCTGAAGAACTGCACATGCCTGAATGGAACCATCCAGTGTGAAA
 CTCTAATCTGCCCAAATCCTGACTGCCCACTTAAGTCGGCTCTTGCGTATGTGGATGGCAAATGCTGTAA
 GGAATGCAAAATCGATAGCCAAATTTCAAGGACGAACCTACTTTGAAGGAGAAAGAAATACAGTCTATTCC
 TCTTCTGGAGTATGTGTTCTCTATGAGTGCAAGGACCAGACCACTGAAACTTGTGAGAGTTCAGGCTGTC
 CAGCTTTGGATTGTCAGAGTCTCATCAGATAACCTTGTCTCACAGCTGTTGCAAAGTTTGTAAAGGTTA
 TGACTTTTGTCTGAAAGGCATAAATGCATGGAGAATTCATCTGCAGAAATCTGAATGACAGGGCTGTT
 TGTAGCTGTCGAGATGGTTTTAGGGCTCTTCGAGAGGATAATGCCTACTGTGAAGACATCGATGAGTGTG
 CTGAAGGGCGCCATTACTGTCGTGAAAATAACAATGTGTGTCAACACCCCGGGTCTTTTTATGTGCATCTG
 CAAAACCTGGATACATCAGAATTGATGATTATTCATGTACAGAACATGATGAGTGTATCACAATCAGCAC
 AACTGTGATGAAAATGCTTTATGCTTCAACTGTTGGAGGACACAACCTGTGTTGCAAGCCGGCTATA
 CAGGGAATGGAACGACATGCAAAGCATTGCAAAGATGGCTGTAGGAATGGAGGAGCCTGTATTGCCGC
 TAATGTGTGTGCCTGCCACAAGGCTTCACTGGACCCAGCTGTGAAACGGACATTGATGAATGCTCTGAT
 GGTTTTGTCAATGTGACAGTCGTGCTAATTGCATTAACCTGCCTGGATGGTACCCTGTGAGTGCAGAG
 ATGGCTACCATGACAATGGGATGTTTTACCAAGTGGAGAATCGTGTGAAGATATTGATGAGTGTGGGAC
 CGGGAGGCACAGCTGTGCCAATGATACCATTTGCTTCAATTTGGATGGCGGATATGATTGTGATGTCCT
 CATGGAAGAATTGCACAGGGGACTGCATCCATGATGGAAAAGTTAAGCAATGGTCCAGATTTGGGTGT
 TGGAAAATGACAGGTGCTCTGTGTGCTCATGTCAGAATGGATTCTGTTATGTGTCGACGGATGGTCTGTGA
 CTGTGAGAATCCCACAGTTGATCTTTTTTGTGCCCTGAATGTGACCCAAAGGCTTAGTAGTCAGTGCCTC
 CATCAAAATGGGAAACTTTGTATAACAGTGGTGACACCTGGGTCCAGAATTGTCAACAGTGCCTGCTGCT
 TGCAAGGGGAAGTTGATTGTTGGCCCTGCCTTGCAGATGTGGAGTGTGAATTCAGCATTCTCCAGAG
 GAATGAGTGTGCCCGCTGTGTCACAGACCCCTGCCAGGCTGACACCATCCGCAATGACATACCAAG
 ACTTGCCTGGACGAAATGAATGTGGTTCGCTTACCGGGTCTCTTGGATCAAACATGGCACTGAGTGTA
 CTCTCTGCCAGTGAAGAATGGCCACATCTGTTGCTCAGTGGATCCACAGTGCCTTCAGGAACTG

ACGCGTACGCGGCCGCTCGAG – GFP Tag – GTTTAA

Protein Sequence: >RG227788 representing NM_001145109
 Red=Cloning site Green=Tags(s)

```

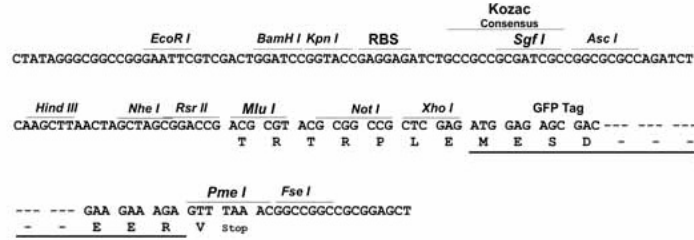
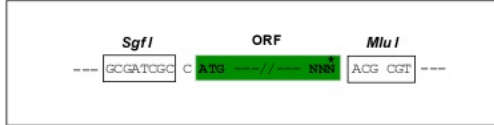
METGLGAPLFWKAWLLISVWGLGVDPQLIDVLTELELGESTTGVRQVPGLHNGTKAFLFQDTPRSIKAST
ATAEQFFQKLRNKHEFTILVTLKQTHLNSGVILSIHHLDHRYLELESSGHRNEVRLHYRSGSHRPHEVF
PYILADDKWHKLSLAISASHLILHIDCNKIYERVVEKPSTDLPLGTTFWLGQRNNAHGYPKIMQDVQLL
VMPQGFIAQCPDLNRTCPTCNDFHGLVQKIMELQDILAKTSAKLSRAEQRMNRLDQCYCERTCTMKGTTY
REFESWIDGCKNCTCLNGTIQCETLICPNPDCPLKSALAYVDGKCKECKSICQFQGRTYFEGERNVYS
SSGVCVLYECKDQTMKLVESGCPALDCPEHQITLSSHCKVKCKGYDFCSEHNCMENSICRNLDRAV
CSCRDGFALREDNAYCEDIDECAEGRHYCRENMCVNTPGSFCICKTGYIRIDDYSCTEHDECITNQH
NCDENALCFNTVGGHNCVCKPGYTGNGTTCKAFCKDGCRRNGGACIAANVCACPQGFSGPSCETDIDECSD
GFVQCDSRANCINLPGWYHCECRDGYHDNGMFSFSGESCEDIDECGTGRHSCANDTICFNLGGYDCRCP
HGKNTGDCIHDGKVKHNGQIIVLENDRCVSCQNGFVMCRMVDCENPTVDLFCCECDPRLSSQCL
HQNGETLYNSGDTWVQNCQCRCLQGEVDCWPLPCPDVECEFSILPENECPPRCVTDPCQADTIRNDITK
TCLDEMNVVRFVTGSSWIKHGTECTLCQCKNGHICCSVDPQCLQEL
  
```

TRTRPLE - GFP Tag - V

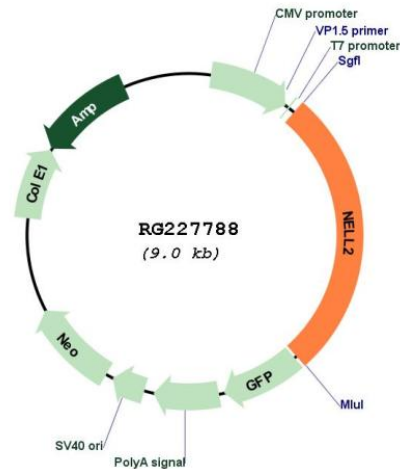
Restriction Sites: Sgfl-MluI

Cloning Scheme:

Cloning sites used for ORF Shutting:



Plasmid Map:



ACCN: NM_001145109

ORF Size: 2445 bp

OTI Disclaimer: The molecular sequence of this clone aligns with the gene accession number as a point of reference only. However, individual transcript sequences of the same gene can differ through naturally occurring variations (e.g. polymorphisms), each with its own valid existence. This clone is substantially in agreement with the reference, but a complete review of all prevailing variants is recommended prior to use. [More info](#)

OTI Annotation: This clone was engineered to express the complete ORF with an expression tag. Expression varies depending on the nature of the gene.

Components: The ORF clone is ion-exchange column purified and shipped in a 2D barcoded Matrix tube containing 10ug of transfection-ready, dried plasmid DNA (reconstitute with 100 ul of water).

Reconstitution Method:

1. Centrifuge at 5,000xg for 5min.
2. Carefully open the tube and add 100ul of sterile water to dissolve the DNA.
3. Close the tube and incubate for 10 minutes at room temperature.
4. Briefly vortex the tube and then do a quick spin (less than 5000xg) to concentrate the liquid at the bottom.
5. Store the suspended plasmid at -20°C. The DNA is stable for at least one year from date of shipping when stored at -20°C.

RefSeq: [NM_001145109.1](#), [NP_001138581.1](#)

RefSeq Size: 3210 bp

RefSeq ORF: 2448 bp

Locus ID: 4753

UniProt ID: [Q99435](#)

Cytogenetics: 12q12

Protein Families: Secreted Protein, Transmembrane

Gene Summary: The protein encoded by this gene is a glycoprotein containing several von Willebrand factor C domains and epidermal growth factor (EGF)-like domains. The encoded protein acts as a homotrimer and is found in the cytoplasm. Several variants encoding a few different isoforms exist, and at least one isoform appears to be a secreted protein. Studies in mouse suggest that this protein plays a role in neural cell growth and differentiation as well as in oncogenesis. [provided by RefSeq, Feb 2009]