

Product datasheet for **RG227766**

Tropomodulin 2 (TMOD2) (NM_001142885) Human Tagged ORF Clone

Product data:

Product Type:	Expression Plasmids
Product Name:	Tropomodulin 2 (TMOD2) (NM_001142885) Human Tagged ORF Clone
Tag:	TurboGFP
Symbol:	TMOD2
Synonyms:	N-TMOD; NTMOD
Mammalian Cell Selection:	Neomycin
Vector:	pCMV6-AC-GFP (PS100010)
E. coli Selection:	Ampicillin (100 ug/mL)
ORF Nucleotide Sequence:	>RG227766 representing NM_001142885 Red=Cloning site Blue=ORF Green=Tags(s)

TTTTGTAATACGACTCACTATAGGGCGGCCGGAATTCGTCGACTGGATCCGGTACCGAGGAGATCTGCC
GCC**CGATCGCC**

ATGGCACTCCCCTTTCAAAAAGAGCTGGAGAAATACAAGAACATTGATGAAGATGAGCTTCTTGCCAAAC
TCTCAGAAGAGGAACTGAAACAGTTGGAAAATGTTCTAGATGACCTAGATCCTGAGAGTGCCATGCTGCC
AGCTGGATTTTCGACAGAAAGACCAGACACAGAAGGCAGCCACCGCCCTTTGACCGCGACACCTCCTC
ATGTACCTGGAGAAGGAGGCTTTGGAACAGAAAGACAGAGAGGACTTTGTGCCCTTCACTGGAGAAAAGA
AAGGGAGAGTCTTTATCCCTAAAGAAAAGCCTATAGAACTCGTAAAGAAGAAAAGTGACCCTTGACCC
AGAACTGGAAGAAGCTTTGGCCAGTGCCTCTGACACCGAACTCTATGATCTTGCAGCTGTCTTGGAGTA
CACAATTTGCTCAACAATCCAAAGTTTCGATGAAGAAACAGCCAACAATAAAGGTGGCAAAGGACCTGTCA
GAAATGTTGTCAAAGGTGAAAAGTAAAGCCAGTATTTGAGGAACCAACAAATCCACAAATGTGAAAAT
AAGCCTGCAGCAGATGAAAGCCAATGATCCTAGCTTGCAAGAAGTCAACCTCAACAACATTAAGGCTTTT
GCAGACATGCTGAAAGTAAACAAGACCTTGACAAGTCTAAACATAGAATCCAATTTATCACTGAACTG
GGATCCTGGCCCTGGTAGAGGCACTGAAAGAAAATGACACCTTGACAGAAATCAAGATTGACAACCAAG
GCAGCAGTTGGGAACAGCTGTAGAGATGGAATTGCCAGATGCTGGAGGAGAATTCAAGGATCCTCAAG
TTTGGATACCAGTTTACCAAGCAAGGCCACGAACAAGGTTGGCAGCTGCCATCACAAGAATAATGACC
TGGTTCGTAAGAAGAGAGTTGAAGCAGACCGAAGG

ACGCGTACGCGGCCGCTCGAG - GFP Tag - GTTTAA



[View online »](#)

Protein Sequence: >RG227766 representing NM_001142885
Red=Cloning site Green=Tags(s)

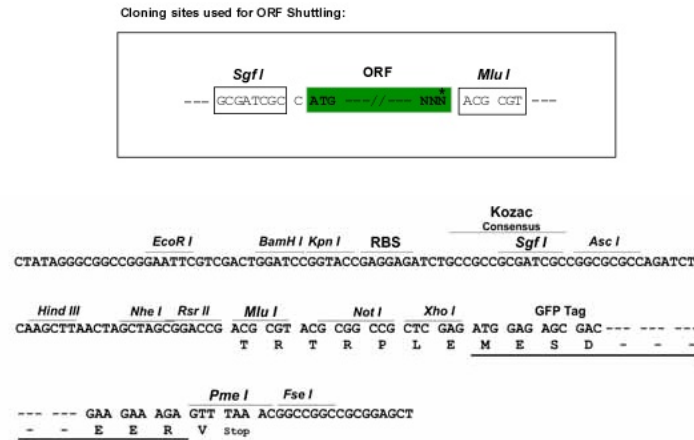
MALPFQKELEKYKNIDEDELLGKLSEELKQLENVLDDLDPE\$AMLPAGFRQKDQTQKAATGPFDRHELL
 MYLEKEALEQKDREDFVPFTGEKKGRVFIPEKPIETRKEEKVTLDPLEEEALASASDTELYDLAAVLGV
 HNLLNNPKFDEETANNKGGKGPVRNVVKGKVKPVFEEPPNPTNVEISLQQMKANDPSLQEVNLLNNIKAF
 ADMLKVNKTLTSLNIESNFITGTGILALVEALKENDTLTEIKIDNQRQLGTAVEMEIAQMLEENSRILK
 FGYQFTKQGPRTRVAAAITKNNDLVRKKRVEADRR

TRTRPLE - GFP Tag - V

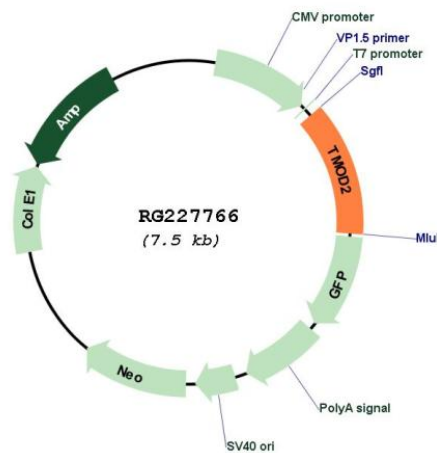
Restriction Sites:

SgfI-MluI

Cloning Scheme:



Plasmid Map:



ACCN: NM_001142885

ORF Size: 945 bp

OTI Disclaimer:	The molecular sequence of this clone aligns with the gene accession number as a point of reference only. However, individual transcript sequences of the same gene can differ through naturally occurring variations (e.g. polymorphisms), each with its own valid existence. This clone is substantially in agreement with the reference, but a complete review of all prevailing variants is recommended prior to use. More info
OTI Annotation:	This clone was engineered to express the complete ORF with an expression tag. Expression varies depending on the nature of the gene.
Components:	The ORF clone is ion-exchange column purified and shipped in a 2D barcoded Matrix tube containing 10ug of transfection-ready, dried plasmid DNA (reconstitute with 100 ul of water).
Reconstitution Method:	<ol style="list-style-type: none">1. Centrifuge at 5,000xg for 5min.2. Carefully open the tube and add 100ul of sterile water to dissolve the DNA.3. Close the tube and incubate for 10 minutes at room temperature.4. Briefly vortex the tube and then do a quick spin (less than 5000xg) to concentrate the liquid at the bottom.5. Store the suspended plasmid at -20°C. The DNA is stable for at least one year from date of shipping when stored at -20°C.
RefSeq:	NM_001142885.2
RefSeq Size:	9078 bp
RefSeq ORF:	948 bp
Locus ID:	29767
UniProt ID:	Q9NZR1
Cytogenetics:	15q21.2
Gene Summary:	This gene encodes a neuronal-specific member of the tropomodulin family of actin-regulatory proteins. The encoded protein caps the pointed end of actin filaments preventing both elongation and depolymerization. The capping activity of this protein is dependent on its association with tropomyosin. Alternatively spliced transcript variants encoding different isoforms have been described. [provided by RefSeq, Dec 2008]