

GCATCAACCCCACTGGTGAAGCAACATGGAGTGCTTACATTGAAGTTCAAGAATTTGGAGTCCAGTTC
AGCCTCCAAGACCTACTGACCCAAATTTAATCCCTAGTGCCCATCAAAACCTGAAGTGACAGATGTCAG
CAGAAATACAGTCACATTATCGTGGCAACCAATTTGAATTCAGGAGCAACTCCAACATCTTATATTATA
GAAGCCTTCAGCCATGCATCTGGTAGCAGCTGGCAGACCGTAGCAGAGAAATGTGAAAACAGAAACATCTG
CCATTAAGGACTCAAACCTAATGCAATTTACCTTTTCTGTGAGGGCAGCTAATGCATATGGAATTAG
TGATCCAAGCCAAATATCAGATCCAGTGAACACAAGATGTCTACCAACAAGTCAGGGGTGGACCAC
AAGCAGTCCAGAGAGAGCTGGGAAATGCTGTTCTGCACCTCCACAACCCACCCTCTTCTTCTCTT
CCATCGAAGTGCACTGGACAGTAGATCAACAGTCTCAGTATATACAAGGATATAAAAATTCCTATCGGCC
ATCTGGAGCCAACCCAGGAGAATCAGACTGTTAGTTTTTGAAGTGAGGACGCCAGCCAAAAACAGTGTG
GTAATCCCTGATCTCAGAAAGGGAGTCAACTATGAAATTAAGGCTCGCCCTTTTTTAAATGAATTTCAAG
GAGCAGATAGTGAATCAAGTTTCCAAAAACCTGGAAGAAGCACCCAGTGCCCAACCCCAAGGTGTAAC
TGTATCCAAGAATGATGGAACGGAACGCAATCTAGTTAGTTGGCAGCCACCTCCAGAAGACTCAA
AATGGAATGGTCCAAGAGTAAAGTTTGGTGTCTGGCAATGAAACTCGATACCACATCAAAAAACAG
TGGATGGTTCACCCCTTCCGTGGTTCCTTCTTGTTCCTGGAATCCGATACAGTGTGGAAGTGGC
AGCCAGCACTGGGCTGGGTCTGGGTAAAGAGTGAGCCTCAGTTCATCCAGCTGGATGCCATGGAAC
CCTGTGTACCTGAGGACCAAGTCAGCCTCGCTCAGCAGATTTAGATGTGGTGAAGCAGCCGGCCTTCA
TAGCAGGTATTGGAGCAGCCTGTTGGATCATCCTCATGGTCTTACGATCTGGCTTTATCGACACCGCAA
GAAGAGAAACGGACTTACTAGTACCTACGCGGGTATCAGAAAAGTAACTTACCAGAGAGGAGGCGAAGCT
GTCAGCAGTGGAGGGAGGCTGGACTTCTCAACATCAGTGAACCTGCCGCGCAGCCATGGCTGGCAGACA
CGTGGCCTAACTGGCAACAACCAATGACTGCTCCATCAGCTGCTGCACGGCAGGCAATGGAACAG
CGACAGCAACCTACTACCTACAGTCGCCCAGGGCAGCCTACTCCTTACGCCACCACTCAGCTCATCCAG
TCAAACCTCAGCAACAACATGAACAATGGCAGCGGGGACTCTGGCAGAAAGCACTGGAACCACTGGGAC
AGCAGAAAACAAGAAGTGGCACCAGTTCAGTACAACATCGTGGAGCAAAAACAAGCTGAACAAGATTATCG
AGCAAATGACACAGTTCCCTCCAACATCCCATACAACCAATCATACGACCAGAACACAGGAGGATCCTAC
AACAGCTCAGACCGGGCAGTAGTACATCTGGAGTCAAGGGCACAAGAAAGGGGCAAGAACACCCAAGG
TACCAAAACAGGGTGGCATGAACTGGGAGACCTGCTTCTCTCCCCAGCACATCCTCTCCACACAG
CAATAGCGAAGAGTACAACATTTCTGTAGATGAAAGCTATGACCAAGAAATGCCATGTCCCGTGCCACCA
GCAAGGATGTATTTGCAACAAGATGAATAGAAGAGGAGGAAGATGAACGAGGCCCACTCCCCCTGTT
GGGAGCAGCCTCTTCTCAGCTGCCGTCTATAGCCATCAGTCCACTGCCACTCTGACTCCCTCCCC
ACAGGAAGAACTCCAGCCATGTTACAGGATTGTCCAGAGGAGACTGGCCACATGCAGCACCAGCCGAC
AGGAGACGGCAGCCTGTGAGTCTCTCCACCACCACGGCGATCTCCCCTCCACATACCTATGGCTACA
TTTCAGGACCCCTGGTCTCAGATATGGATACGGATGCGCCAGAAGAGGAAGAAGCAAGCCGACATGGA
GGTAGCCAAGATGCAAAACAGAAGGCTTTTGTACGTGGGCTTGAGCAGACACCTGCCTCCAGTGTGGG
GACCTGGAGAGCTCTGTACGGGGTCCATGATCAACGGCTGGGGCTCAGCCTCAGAGGAGGACAACATTT
CCAGCGGACGCTCCAGTGTAGTTCTTCGGACGGCTCCTTTTTACTGATGCTGACTTTGCCAGGCAGT
CGCAGCAGCGCAGAGTATGCTGGTCTGAAAGTAGCACGACGGCAATGCAGGATGCTGTGGCCGTGCA
CATTTTCATGCGTCTCAGTGCCTTAGGCCACAAGTCCCGTGTCTACAGACAGCAACATGAGTGGCCCG
TAATGCAGAAAACAGACCAGCAAGAACTGAAAACACCAGCCAGGACATCTGCGCAGAGAAACCTACAC
AGATGATCTTCCACCACCTCCTGTGCCGACCTGCTATAAAGTCACTACTGCCAATCCAAGACACAG
CTGGAAGTACGACCTGTAGTGGTCCAAAACCTCCTTCTATGGATGCAAGAACAGACAGATCATCAGACA
GAAAAGGAAGCAGTTACAAGGGGAGAGAAGTGTGGATGGAAGACAGTTGTTGACATGGCAACAATCC
AGGTGATCCCAGAGAAGCACAGGAACAGCAAAATGACGGGAAAGGACGTGGAAACAAGGCAGAAAACGA
GACCTTCCACCAGCAAAGACTCATCTCATCCAAGAGGATATTCTACCTTATTGTAGACCTACTTTTCCAA
CATCAAATAATCCAGAGATCCCAGTTCCTCAAGCTCAATGTCATCAAGAGGATCAGGAAGCAGACAAAG
AGAACAAGCAAATGTAGGTGCAAGAAATATTGCAGAAATGCAGGTAATGGAGGATATGAAAGAGGAGAA
GATAATAATGAAGAATTAGAGGAAACTGAAAGC

ACGCGTACGCGGCCGCTCGAG – GFP Tag – GTTTAA

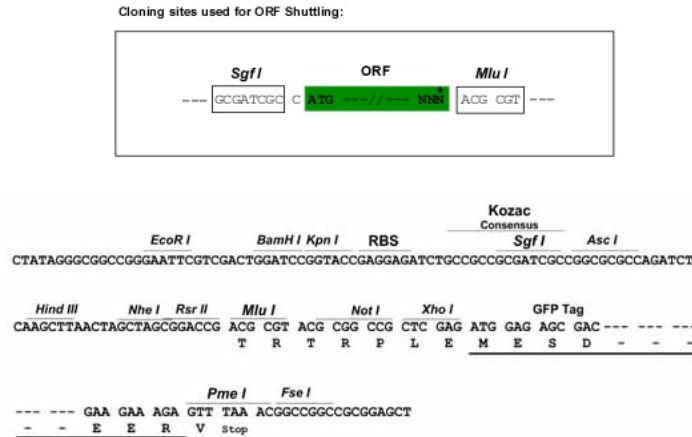
Protein Sequence: >RG227761 representing NM_001145845
 Red=Cloning site Green=Tags(s)

MIAEPAHFYLFGLICLCSGSRRLRQEDFPPRIVEHPSDLIVSKGEPATLNCKAEGRPPTPTIEWYKGGERVE
 TDKDDPRSHRMLLPSGSLFFLRIVHGRKSRPDEGVVYCVARNYLGEAVSHNASLEVAIRDFFRQNP
 SDV MVVVGEPAVMECQPPRGHPEPTISWKKDGSPLDDKDERITIRGGKLMITYTRKSDAGKYVCVGT
 NMVGER ESEVAELTVLERPSFVKRPSNLAVTVDDSAEFKCEARGDPVPTVWRKDDGELPKSRYEIR
 DDDHLKIRK VTAGDMGSYTCVAENMVGKAEASATLTVQVGSEPPHFVVKPRDQVVALGRTVTFQ
 CEATGNPQPAIFWRR EGSQNLLFSYQPQSSSRFSVSQTGDLTITNVQRSDVGYIICQTLNVAGSII
 TKAYLEVTVDVIADRP
 PVPV IRQGPVNVQTVAVDGTFLVLSCVATGSPVPTILWRKDGVLVSTQDSRIKQLENGVLQIRYAK
 LGDTGRYT
 CI ASTPSGEATWSAYIEVQEFQVVPVQPPRPTD
 PNL IPSAPSKPEVTDVSRNTVTLVSWQPNLNSGATPTSYII EAFSHASGSSWQTV
 AENVKTETSAIKGLKPNAIYLFVRAANAYGISDPSQISDPVKTQDVLPTSQGV
 DH KQVQRELGNAVLHLHNPTVLSSSSIEVHWTVDQSQYIQGYKILYRPSGANHGESD
 WLVFEV
 RTPAKNSV VIPDLRKGVNYEIKARPFNEFQGADSEIKFAKTL
 EEAPSAPPQVTVSKNDGNGTAILVSWQPP
 EDTQ NGMVQYKVVWCLGNETRYHINKTV
 DGSSTLSVVIPLVPGIRYSVEVA
 ASTGAGSGVKSEPFQIQLDAHGN PVPSPEDQVSLAQQISD
 VVKQPAFIAGIGAACWILMVFSIWLYRHRK
 KRNGLTSTYAGIRKVTYQ
 RGGEA VSSGGRPGLLNISEPA
 AQPWLADTWPN
 TGNHNDCSI SCCTAGNGNSDSNLT
 TYSRPGQPTPYATTQLIQ SNL
 SNNMNGSGDSGEKHWKPLGQKQEV
 APVQYNI
 VEQNKLNDYRANDV
 PPTIPYNQSYDQNTGGSY NSSDRG
 SSTSGSGHKKGARTPKV
 PKQGGMNWADLLPPPPA
 HPPPHSNSEEYNI
 SVDESVDQEMPCVPP ARMYLQ
 QDEEEEEEDERGPTPPV
 RGAASSPA
 AVSYSHQSTATLTPSPQEELQ
 PMLQDCPEETG
 HMQHQPDRRRQPVSP
 PPRPISPPHTYGYISG
 PLVSDMDT
 APEEEED
 EADMEVAKM
 QTRRLLLRGLEQTPASSV
 G DLESSVTGSMINGWGS
 ASEDNISSGRSSVSSSDG
 SFFTDADFAQAVAAAAEYAG
 LKVAR
 RQMDAAGRR HFHASQCP
 RPTSPVSTDSNMSAAVMQKTR
 PAKLKHQPGHLRRETYTDD
 LPPPPVPPPAIKSPTAQSKTQ
 LEV
 RPPVVPKLP
 SMDARTDRSSDRKGSYK
 GREVLDGRQVDMRTNPGDP
 PREAQEQNDGKGRGNKAAKR
 DLPPAKTHLIQEDILPYCRPT
 FPTSNNPRDPSSSSSMSSR
 GSGSRQREQANVGRRIAEMQV
 LGGYERGEDNNEE
 EETES

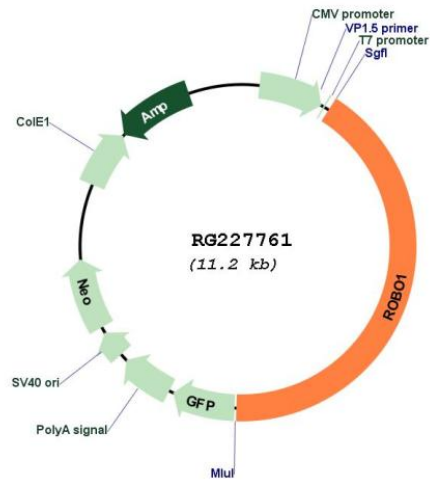
TRTRPLE - GFP Tag - V

Restriction Sites: SgfI-MluI

Cloning Scheme:



Plasmid Map:



ACCN: NM_001145845

ORF Size: 4653 bp

OTI Disclaimer: The molecular sequence of this clone aligns with the gene accession number as a point of reference only. However, individual transcript sequences of the same gene can differ through naturally occurring variations (e.g. polymorphisms), each with its own valid existence. This clone is substantially in agreement with the reference, but a complete review of all prevailing variants is recommended prior to use. [More info](#)

OTI Annotation: This clone was engineered to express the complete ORF with an expression tag. Expression varies depending on the nature of the gene.

Components: The ORF clone is ion-exchange column purified and shipped in a 2D barcoded Matrix tube containing 10ug of transfection-ready, dried plasmid DNA (reconstitute with 100 ul of water).

Reconstitution Method:

1. Centrifuge at 5,000xg for 5min.
2. Carefully open the tube and add 100ul of sterile water to dissolve the DNA.
3. Close the tube and incubate for 10 minutes at room temperature.
4. Briefly vortex the tube and then do a quick spin (less than 5000xg) to concentrate the liquid at the bottom.
5. Store the suspended plasmid at -20°C. The DNA is stable for at least one year from date of shipping when stored at -20°C.

RefSeq: [NM_001145845.1](#), [NP_001139317.1](#)

RefSeq Size: 7385 bp

RefSeq ORF: 4656 bp

Locus ID: 6091

UniProt ID: [Q9Y6N7](#)

Cytogenetics: 3p12.3

Protein Families: Druggable Genome

Protein Pathways: Axon guidance

Gene Summary: Bilateral symmetric nervous systems have special midline structures that establish a partition between the two mirror image halves. Some axons project toward and across the midline in response to long-range chemoattractants emanating from the midline. The product of this gene is a member of the immunoglobulin gene superfamily and encodes an integral membrane protein that functions in axon guidance and neuronal precursor cell migration. This receptor is activated by SLIT-family proteins, resulting in a repulsive effect on glioma cell guidance in the developing brain. A related gene is located at an adjacent region on chromosome 3. Multiple transcript variants encoding different isoforms have been found for this gene. [provided by RefSeq, Mar 2009]