

Product datasheet for **RG227759**

CHID1 (NM_001142676) Human Tagged ORF Clone

Product data:

Product Type:	Expression Plasmids
Product Name:	CHID1 (NM_001142676) Human Tagged ORF Clone
Tag:	TurboGFP
Symbol:	CHID1
Synonyms:	GL008; SI-CLP; SICLP
Mammalian Cell Selection:	Neomycin
Vector:	pCMV6-AC-GFP (PS100010)
E. coli Selection:	Ampicillin (100 ug/mL)
ORF Nucleotide Sequence:	>RG227759 representing NM_001142676 Red=Cloning site Blue=ORF Green=Tags(s)

TTTTGTAATACGACTCACTATAGGGCGGCCGGAATTCGTCGACTGGATCCGGTACCGAGGAGATCTGCC
GCC**CGATCGCC**

ATGCGGACACTCTTCAACCTCCTCTGGCTTGCCCTGGCCTGCAGCCCTGTTCACTACCCTGTCAAAGT
CAGATGCCAAAAAGCCGCTCAAAGACGCTGCTGGAGAAGTGAAGTTTGCTCTTGTGCCAGGCTG
GAGCGCAATGGCGGATCTTGGCTCACCACAACCTCTGCCACCCAGAGTCAGTTTCAGATAAGCCGGT
CAAGACCGGGTTTGGTGGTACGGACCTCAAAGCTGAGAGTGTGGTTCTTGAGCATCGCAGCTACTGCT
CGGCAAAGGCCCGGACAGACACTTTGCTGGGGATGTACTGGGCTATGTCCTCCATGGAACAGCCATGG
CTACGATGTACCAAGGTCTTTGGGAGCAAGTTCACACAGATCTCACCCGCTGGCTGCAGCTGAAGAGA
CGTGGCCGTGAGATGTTTGGGTCACGGCCCTCCACGACGTGGACCAAGGGTGGATGCGAGCTGTACGGA
AGCATGCCAAGGGCTGCACATAGTGCCTCGGCTCCTGTTTGGAGACTGGACTTACGATGATTTCCGGAA
CGTCTTAGACAGTGAGGATGAGATAGAGGAGCTGAGCAAGACCGTGGTCCAGGTGGCAAAGAACCAGCAT
TTCGATGGCTTCGTGGTGGAGGTCTGGAACCAGCTGCTAAGCCAGAAGCGGTGGCCCTCATCCACATGC
TCACCCACTTGGCCGAGGCTCTGCACAGGCCCGGCTGCTGGCCCTCCTGGTCAATCCCGCTGCCATCAC
CCCCGGGACCGACAGCTGGGCATGTTACGCACAAGGAGTTTGAGCAGCTGGCCCCGTGCTGGATGGT
TTCAGCCTCATGACCTACGACTACTCTACAGCGCATCAGCTGGCCCTAATGCACCCCTGTCTGGGTTT
GAGCCTGCGTCCAGTCCAGTCCAGTCCAGTCCAGTCCAGTCCAGTCCAGTCCAGTCCAGTCCAGTCCAGT
TGGTATGGACTACGCGACCTCCAAGGATGCCCGTGGGCTGTTGTGGGGCCAGGTACATCCAGACACTG
AAGGACCACAGGCCCGGATGGTGTGGGACAGCCAGGCCCTCAGAGCACTTCTTCGAGTACAAGAAGGCC
GCAGTGGGAGGCACGTCGCTTCTACCCAACCCTGAAGTCCCTGCAGGTGCGGCTGGAGCTGGCCCCGGA
GCTGGGCGTTGGGTCTCTATCTGGGAGCTGGGCCAGGCCCTGGACTACTTCTACGACTGCTC

ACGCGTACGCGGCCGCTCGAG - GFP Tag - GTTTAA



[View online >](#)

Protein Sequence: >RG227759 representing NM_001142676
 Red=Cloning site Green=Tags(s)

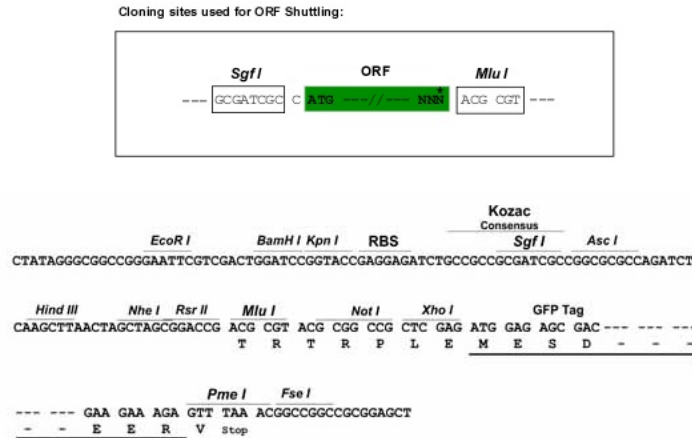
MRTLFNLLWLALACSPVHTTLSKSDAKKAASKTLLEKVKFCSCCPGWSAMARSWLTATSATQSQFSDKPV
 QDRGLVVTDLKAESVLEHRSYCSAKARDRHAFAGDVLGYVTPWNSHGVDVTKVFGSKFTQISPVWLQLKR
 RGREMFVETGLHDVDQGWMAVRKHAKGLHIVPRLLFEDWTYDDFRNVL DSEDEIEELSKTVVQVAKNQH
 FDGFVVEVWNQLLSQKRVLIIHMLTHLAEALHQARLLALLVIPPAITPGTDQLGMFTHKEFEQLAPVLDG
 FSLMTYDYSTAHPGNAPLSWVRACVQLDPKSKWRSKILLGLNFYGM DYATSKDAREPVVGARYIQTL
 KDHRPRMVWDSQASEHFFEYKKSRSRGRHVVFYPTL KSLQVRLELARELGVGVS IWELGQGLDYFYDLL

TRTRPLE - GFP Tag - V

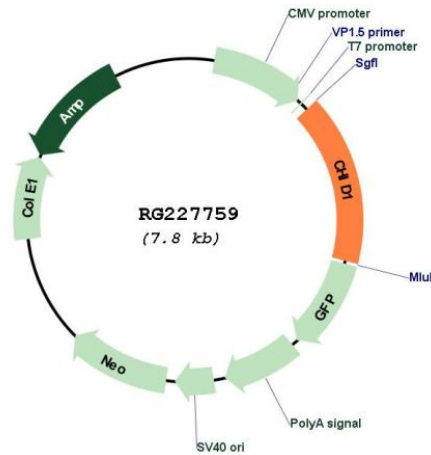
Restriction Sites:

Sgfl-MluI

Cloning Scheme:



Plasmid Map:



ACCN:

NM_001142676

ORF Size:	1254 bp
OTI Disclaimer:	The molecular sequence of this clone aligns with the gene accession number as a point of reference only. However, individual transcript sequences of the same gene can differ through naturally occurring variations (e.g. polymorphisms), each with its own valid existence. This clone is substantially in agreement with the reference, but a complete review of all prevailing variants is recommended prior to use. More info
OTI Annotation:	This clone was engineered to express the complete ORF with an expression tag. Expression varies depending on the nature of the gene.
Components:	The ORF clone is ion-exchange column purified and shipped in a 2D barcoded Matrix tube containing 10ug of transfection-ready, dried plasmid DNA (reconstitute with 100 ul of water).
Reconstitution Method:	<ol style="list-style-type: none">1. Centrifuge at 5,000xg for 5min.2. Carefully open the tube and add 100ul of sterile water to dissolve the DNA.3. Close the tube and incubate for 10 minutes at room temperature.4. Briefly vortex the tube and then do a quick spin (less than 5000xg) to concentrate the liquid at the bottom.5. Store the suspended plasmid at -20°C. The DNA is stable for at least one year from date of shipping when stored at -20°C.
RefSeq:	NM_001142676.2
RefSeq Size:	3419 bp
RefSeq ORF:	1257 bp
Locus ID:	66005
UniProt ID:	Q9BWS9
Cytogenetics:	11p15.5
Gene Summary:	Saccharide- and LPS-binding protein with possible roles in pathogen sensing and endotoxin neutralization. Ligand-binding specificity relates to the length of the oligosaccharides, with preference for chitotetraose (in vitro).[UniProtKB/Swiss-Prot Function]