

## Product datasheet for **RG227741**

### **ZNF652 (NM\_001145365) Human Tagged ORF Clone**

#### **Product data:**

Product Type:	Expression Plasmids
Product Name:	ZNF652 (NM_001145365) Human Tagged ORF Clone
Tag:	TurboGFP
Symbol:	ZNF652
Mammalian Cell Selection:	Neomycin
Vector:	pCMV6-AC-GFP (PS100010)
E. coli Selection:	Ampicillin (100 ug/mL)



[View online »](#)



**ORF Nucleotide Sequence:**

>RG227741 representing NM\_001145365  
 Red=Cloning site Blue=ORF Green=Tags(s)

TTTTGTAATACGACTCACTATAGGGCGGCCGGAATTCGTCGACTGGATCCGGTACCGAGGAGATCTGCC  
 GCC**CGCATCGCC**

ATGAGCCACACAGCCAGTTCTTGTCTCAGGAGCTGGTTGAAAACGTGCTGTGCATGTAGCAGGAATGGCAC  
 AAGAAGATAGCCGTCGTGGTCAAGTGCCATCTTCTTTTATCATGGTGCCAACCAAGAACTTGACCTGTC  
 CACCAAAGTGACAAAAGGGAATCAGGAAGTCCTTATTCTGTGTTAGTGACACCAAGATGAGCAAAACCG  
 CATCTCCATGAAACAGAGAAGACGCCATATTTACGGGAGACAAGAGCAGTGTCTGACGTGCATGCTGTTA  
 AGGAAGACCGGGAGAATTCTGATGACACAGAGGAGGAAGAGGAAGAAGTCTTTACAAAAGGGAGCAGAT  
 CATAGTGGAGGTAAACCTTAATAATCAACATTAATGTATCTAAAGGGGAAAAGGGTGTCTCTTCTCAG  
 TCCAAAGAGACTCCTGTTCTTAAGACAAGCAGTGAGGAGGAAGAGGAAGAGAGTGAGGAAGAGGCCACAG  
 ATGACAGCAATGACTATGGAGAGAATGAAAAGCAGAAGAAAAAGGAGAAGATAGTAGAGAAAGTCAGCGT  
 TACACAAAGGAGAACCAGGAGAGCTGCCTCTGTTGCCGAGCTACCACTCCCCTACTCCCAGAACTACA  
 AGAGGTCGTAGGAAGAGTGATAGGCCACCTAAGCGTAAGAAGCGGCCACAAAGGAGCCAAAGCACCAG  
 TCCAGAAAGCTAAGTGTGAAGAGAAAGAGACTCTGACCTGTGAGAAGTGCCCCAGGGTATTTAACTCG  
 CTGGTACCTGGAGAAGCAGATGAACGTTACTCATAGGCGCATGCAGATTTGTGATAAATGTGGCAAGAAG  
 TTTGTCCTGGAAAGTGAGCTGTCCCTTCACCAGCAACAGACTGTGAAAAAACATTCAAGTGTGTTTCT  
 GTAACAAATCGTTCAAGAACTCTGGTCCCTTCATGAACATATCAAGATCGTCCATGGATATGCAGAAAA  
 GAAATTTTCTGTGAAATTTGTGAGAAGAAATCTATACCATGGCTCATGTGCGGAAACACATGGTTGCA  
 CACAAAAAGACATGCCATTTACATGCGAAACCTGTGGAAATCATTCAAACGCAGTATGTCACTCAAGG  
 TGCCTCTTGCAGCATCTGGAGAGAAGCCCTTTAGATGCGGAACTGTGACGAAAGGTTTCAGTACAA  
 GTACCAGCTACGCTCCCATGAGCATTATATTGGGCACAAACAGTTTCATGTGCCAGTGGTGTGGCAAG  
 GATTTCAACATGAAGCAGTACTTCGACGAACACATGAAAACACACACTGGAGAGAAACCTTTATCTGTG  
 AAATCTGTGGCAAAAGCTTCACCAGCCGCCCAACATGAAGAGACACCGCAGAACTCACACAGGCGAGAA  
 GCCCTATCCATGTGATGTGTGTGGCCAGCGTTCCGCTTCTCGAACATGCTTAAGGCCACAAAGGAGAAG  
 TGCTTTCCGGTGACACAGCCCGTGAATGTGCCACCTGCTGTCCAGATCCCACTTACAACCTCCCCAGCCA  
 CCCCAGTTCTTCTGTGGTGAACACAGCCACAACCCCAACCCCTCCAATCAATATGAATCCTGTAAAGCAC  
 TCTTCCCCCTCGGCCATCCCCACCCCTTCTCACACCTGCACATCCACCCACACCCTACCACCCACAC  
 CACCTTCCCATCCCTCCAGTCCCTCACCTCCGCCACCTCCAGCTCTTTAAGAGTGAGCCTTTAAATC  
 ATAGAGGCCAGAGTGAGGACAACCTTCTCGGGCACCTGGCAGAGAAGAAGAGTTCAGCACAGCATCAT

**ACGCGT**ACGCGGCGCGCTCGAG – GFP Tag – GTTTAA

**Protein Sequence:**

>RG227741 representing NM\_001145365  
 Red=Cloning site Green=Tags(s)

MSHTASSCQELVENCAVHVAGMAQEDSRRGQVPSSFYHGANQELDLSTKVYKRESGSPYSVLVDTKMSKP  
 HLHETEEQPYFRETRAVSDVHAVKEDRENSDDTEEEEEVSYSKREQIIIVEVNLNNQTLNVSKGEKGVSSQ  
 SKETPVLKTSSEEEEESEEEATDDSDNDYGENEQKKKEKIVEKVSVTQRRTRRAASVAAATTSPTPRTT  
 RGRRKSVPEPPKRKKRATKEPKAPVQKAKCEEKETLTCEKCPRVFNTRWYLEKHMNVTHRRMQICDKCGKK  
 FVLESELHLHQQTDEKNIQCVSCNKSFKKLWSLHEHIKIVHGYAEKKFSCEICEKKFYTMAHVRKHMVA  
 HTKDMPTFCETCGKSFKRMSLVHSLQHSGEKPFRCENCDEFQYQYQLRSHMSIHHGHKQFMCQWCGK  
 DFNMKQYFDEHMKTHTEKPFICEICGKSFTSRPNMKRHRRTHTGEKPYPCDVCGQRFRFSNMLKAHKEK  
 CFRVTSVNVPPAVQIPLTTPATPVPSVNTATTPPPINMNPVSTLPPRPVPHPFSLHLIHPHPPHPPH  
 HLPVPPVPHLPPPPALFKSEPLNHRGQSEDNFLRLHLAEKNSSAQHH

**TRTRPLE** – GFP Tag – V

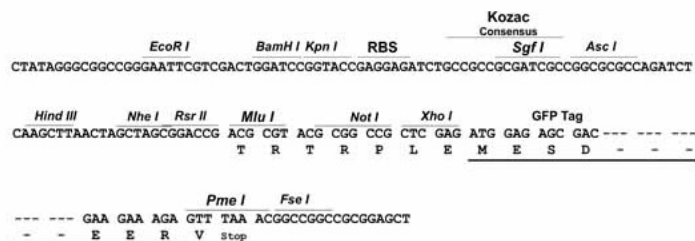
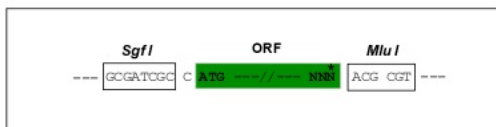
**Restriction Sites:**

SgfI-MluI

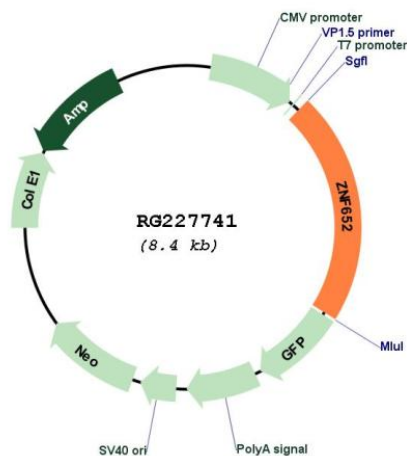


## Cloning Scheme:

Cloning sites used for ORF Shuttling:



## Plasmid Map:



ACCN:

NM\_001145365



<b>ORF Size:</b>	1818 bp
<b>OTI Disclaimer:</b>	The molecular sequence of this clone aligns with the gene accession number as a point of reference only. However, individual transcript sequences of the same gene can differ through naturally occurring variations (e.g. polymorphisms), each with its own valid existence. This clone is substantially in agreement with the reference, but a complete review of all prevailing variants is recommended prior to use. <a href="#">More info</a>
<b>OTI Annotation:</b>	This clone was engineered to express the complete ORF with an expression tag. Expression varies depending on the nature of the gene.
<b>Components:</b>	The ORF clone is ion-exchange column purified and shipped in a 2D barcoded Matrix tube containing 10ug of transfection-ready, dried plasmid DNA (reconstitute with 100 ul of water).
<b>Reconstitution Method:</b>	<ol style="list-style-type: none"> <li>1. Centrifuge at 5,000xg for 5min.</li> <li>2. Carefully open the tube and add 100ul of sterile water to dissolve the DNA.</li> <li>3. Close the tube and incubate for 10 minutes at room temperature.</li> <li>4. Briefly vortex the tube and then do a quick spin (less than 5000xg) to concentrate the liquid at the bottom.</li> <li>5. Store the suspended plasmid at -20°C. The DNA is stable for at least one year from date of shipping when stored at -20°C.</li> </ol>
<b>RefSeq:</b>	<a href="#">NM_001145365.3</a>
<b>RefSeq Size:</b>	11492 bp
<b>RefSeq ORF:</b>	1821 bp
<b>Locus ID:</b>	22834
<b>UniProt ID:</b>	<a href="#">Q9Y2D9</a>
<b>Cytogenetics:</b>	17q21.32-q21.33
<b>Gene Summary:</b>	Functions as a transcriptional repressor.[UniProtKB/Swiss-Prot Function]