

Product datasheet for **RG227724**

DELE1 (NM_001142603) Human Tagged ORF Clone

Product data:

Product Type:	Expression Plasmids
Product Name:	DELE1 (NM_001142603) Human Tagged ORF Clone
Tag:	TurboGFP
Symbol:	DELE1
Synonyms:	DELE; DELE1(L); KIAA0141
Mammalian Cell Selection:	Neomycin
Vector:	pCMV6-AC-GFP (PS100010)
E. coli Selection:	Ampicillin (100 ug/mL)



[View online »](#)

ORF Nucleotide Sequence:

>RG227724 representing NM_001142603
 Red=Cloning site Blue=ORF Green=Tags(s)

TTTTGTAATACGACTCACTATAGGGCGGCCGGAATTCGTCGACTGGATCCGGTACCGAGGAGATCTGCC
 GCC**GCGATCGCC**

ATGTGGCGCCTCCCGGGACTCCTGGGCCGAGCTCTCCCGTACACTGGGACCTAGCCTCTGGAGGGTGA
 CTCTAAGTCCACCAGCCAGATGGGCCTCAGACTACCTCCTCCACTTTGCTGGTTCTGTGCCTAACCT
 CGACAGGTCAGGTCCCCATGGCCAGGCACGAGCGGGGTCCAAGTCCCATGGATGGAAGGATGCCTTC
 CAATGGATGTCTTCCCGTGTCTCCCGAACACCCTATGGGATGCCATATCTTGGGCACTCTGGCCGTGC
 TGGCCCTGCAGCTGGCAAGGCAGATCCACTTCCAGGCATCCCTGCCAGCAGGACCTCAGCGGGTAGAACA
 CTGCTCCTGGCACAGTCCCCTGGACCGTTTCTTCTCATCTCCCTTGTGGCACCCATGCTCCTCACTGCGA
 CAACACATCTCCCAGCCCCGATGGCCAGCTCCAGGCACACTGGCCTCAGGGAACCCAGGCTTGGCC
 AGGAAGAAGCCTCAGCTCAGCCCCGAACTTCTCACAACTCTTTGAGAGGAGCTCGTCTCAGGACCC
 CTCTGAGGAAGTCCCGGTGATTTTGGCTTCTGCATGCCAGTAGTAGCATCGAGTCCGAGGCAAAACCA
 GCCCAGCCTCAGCCACTGGTAAAAGGAACAAGATAAATCAAAAACCTTTCCCTTGGAGAGGCTGTGA
 CTTCCATTCAGCAGCTCTTCCAGCTCAGTGTTCATCACTTTCAACTTCTGGGAACAGAGAACATGAA
 GAGTGGCGACCACACGGCAGCCTTTTCTACTTCCAGAAAGCTGCAGCCCGCGGTACAGCAAAGCGCAG
 TACAATGCGGGCTTGTGTATGAGCATGGCAGAGGCACCCCCAGGGACATTAGCAAGGCGGTCTTTATT
 ATCAGTTGGTGGCAGCCAGGGCCACAGCCTGGCTCAGTACCGCTATGCCAGGTGCCTACTACGAGACCC
 AGCCTCTCGTGGAAACCTGAGCGGCAGAGGGCAGTGTCTTGTGAAGCAGGCTGCAGACTCAGGCTTG
 AGAGAGGCCCAAGCTTCTCGGGTGTCTTTCACCAAGGAGCCCTACCTGGATGAGCAGAGAGCTGTGA
 AATATCTTTGGCTTGCAGCAACAATGGGGACTCACAGAGCAGGTACCACCTTGGAAATTTGCTATGAGAA
 AGGCCTTGGTGTGCAGAGGAATCTGGGAGAGCCCTTGGATGTTACCAGCAGTACGCCGCTCTGGGAAAT
 GAGGCCGCCAGGAGAGGCTGCGAGCCCTTTTTCCATGGGGGCTGCAGCCCCGGGGCCAGCGACCTGA
 CAGTTACAGGACTGAAGTCTTCTCCAGCCCTCCCTCTGCAGCTTGAACACCCTGCTAGCAGGAACCTC
 ACGCCTACCACATGCCTCGAGCACAGGCAACCTTGGCCTCCTCTGCAGAAGTGGGCATCTCGGAGCCAGC
 CTGGAAGCCTCCAGCAGGGCTATTCCCCACACCCCTACCCACTGGAAAGGAGTGTGTAAGACTAGGTT
 TTGGC

ACGCGTACGCGGCCGCTCGAG – GFP Tag – GTTTAA

Protein Sequence:

>RG227724 representing NM_001142603
 Red=Cloning site Green=Tags(s)

MWRLPGLLGRALPRTLGPSTLWRVTPKSTSPDGPQTSSSTLLVPVNLDRSGPHGPGTSGGPRSHGWKDAF
 QWMSRVSPNTLWDAISWGTAVLALQLARQIHFAQSLPAGPQRVEHCSWHSPLDRFFSSPLWHPCSSLR
 QHILPSPDGPAPRHTGLREPRLGQEEASAQPRNFSHNSLRGARPQDPSEEGPQDFGLHASSIESEAKP
 AQPQPTGEKEQDKSKTSLSEEAVTSIQQLFQLSVSITFNFLGTENMKSQDHTAAFYFQKAAARGYSKAQ
 YNAGLCHEHGRGTPRDISKAVLYYQLAASQGHSLAQYRYARCLLRDPASSWNPERQRAVSLKQAADSGL
 REAQAFGLVLFTEPYLDEQRAVKYLWLAANNGDSQSRVHLGICYEKGLGVQRNLGEALRCYQQAALGN
 EAAQERLRALFSMGAAAPGPSDLTVTGLKSFSSPSLCSLNTLLAGTSRLPHASSTGNLGLLCRSGHLGAS
 LEASSRAIPHPYPLERSVVRLGFG

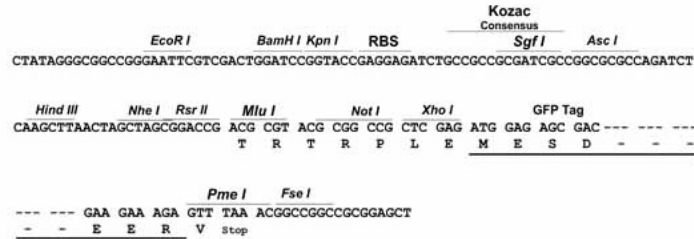
TRTRPLE – GFP Tag – V

Restriction Sites:

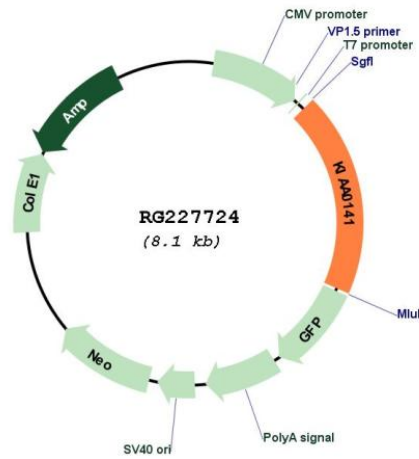
Sgfl-MluI

Cloning Scheme:

Cloning sites used for ORF Shutting:



Plasmid Map:



ACCN:	NM_001142603
ORF Size:	1545 bp
OTI Disclaimer:	The molecular sequence of this clone aligns with the gene accession number as a point of reference only. However, individual transcript sequences of the same gene can differ through naturally occurring variations (e.g. polymorphisms), each with its own valid existence. This clone is substantially in agreement with the reference, but a complete review of all prevailing variants is recommended prior to use. More info
OTI Annotation:	This clone was engineered to express the complete ORF with an expression tag. Expression varies depending on the nature of the gene.
Components:	The ORF clone is ion-exchange column purified and shipped in a 2D barcoded Matrix tube containing 10ug of transfection-ready, dried plasmid DNA (reconstitute with 100 ul of water).
Reconstitution Method:	<ol style="list-style-type: none">1. Centrifuge at 5,000xg for 5min.2. Carefully open the tube and add 100ul of sterile water to dissolve the DNA.3. Close the tube and incubate for 10 minutes at room temperature.4. Briefly vortex the tube and then do a quick spin (less than 5000xg) to concentrate the liquid at the bottom.5. Store the suspended plasmid at -20°C. The DNA is stable for at least one year from date of shipping when stored at -20°C.
RefSeq:	NM_001142603.1 , NP_001136075.1
RefSeq Size:	4195 bp
RefSeq ORF:	1548 bp
Locus ID:	9812
UniProt ID:	Q14154
Cytogenetics:	5q31.3
Gene Summary:	Essential for the induction of death receptor-mediated apoptosis through the regulation of caspase activation.[UniProtKB/Swiss-Prot Function]