

Product datasheet for **RG227711**

Properdin (CFP) (NM_001145252) Human Tagged ORF Clone

Product data:

Product Type:	Expression Plasmids
Product Name:	Properdin (CFP) (NM_001145252) Human Tagged ORF Clone
Tag:	TurboGFP
Symbol:	CFP
Synonyms:	BFD; PFC; PFD; PROPERDIN
Mammalian Cell Selection:	Neomycin
Vector:	pCMV6-AC-GFP (PS100010)
E. coli Selection:	Ampicillin (100 ug/mL)



[View online »](#)

ORF Nucleotide Sequence:

>RG227711 representing NM_001145252
 Red=Cloning site Blue=ORF Green=Tags(s)

TTTTGTAATACGACTCACTATAGGGCGGCCGGAATTCGTGACTGGATCCGGTACCGAGGAGATCTGCC
 GCC**CGGATCGCC**

ATGATCACAGAGGGAGCGCAGGCCCTCGATTGTTGCTGCCGCCGCTGCTCCTGCTGCTCACCTGCCAG
 CCACAGGCTCAGACCCCTGCTCTGCTTACCCAGTATGAAGAATCCTCCGGCAAGTGCAAGGGCCCTCT
 GGGGGTGGTGTACGCTGGAAGACTGCTGTCTCAACTGCCTTTGCCTACCAGAAACGTAGTGGTGGG
 CTCTGTGACGCTTGCAGGTCCCCACGATGGTCCCTTTGGTCCACATGGGCCCTGTTCCGGTACGCTGCT
 CTGAGGGCTCCCAGTGCAGTACCGGCGCTGTGTGGGCTGGAATGGGCAGTGTCTGGAAAGGTGGCACC
 TGGGACCCTGGAGTGGCAGTCCAGGCCTGTGAGGACCAGCAGTGTCTGCTGAGATGGGCGCTGGTCT
 GGCTGGGGCCCTGGGAGCCTTGTCTGTACCTGCTCCAAGGGACCCGGACCCGAGGCGAGCCTGTA
 ATCACCCTGCTCCAAGTGTGGGGCCACTGCCAGGACAGGCACAGGAATCAGAGGCCTGTGACACCCA
 GCAGGTCTGCCCCACACGGGGCTGGGCCACTGGGGCCCTGGACCCCTGCTCAGCCTCTGCCAC
 GGTGGACCCACGAACCTAAGGAGACACGAAGCCGAAGTGTCTGCACCTGAGCCCTCCAGAAACCTC
 CTGGGAAGCCCTGCCCGGGCTAGCCTACGAGCAGCGGAGGTGCACCGGCTGCCACCCTGCCAGTGGC
 TGGGGCTGGGGCCCTGGGGCCCTGTGAGCCCTGCCCTGTGACCTGTGGCCTGGGCCAGACCATGGAA
 CAACGGACGTGCAATCACCTGTGCCACGATGGGGGCCCTTCTGTGCTGGGATGCCACCCGGACCC
 ACATCTGCAACACAGCTGTGCCCTGCCCTGTGGATGGGGAGTGGGACTCGTGGGGGAGTGGAGCCCTG
 TATCCGACGGAACATGAAGTCCATCAGCTGTCAAGAAATCCCGGGCCAGCAGTACGCGGGAGGACCTGC
 AGGGCCGCAAGTTTGACGGACATCGATGTGCCGGCAACAGCAGGATATCCGGCACTGTACAGCATCC
 AGCACTGCCCTTGAAAGGATCATGGTCAGAGTGGAGTACCTGGGGCTGTGCATGCCCCCTGTGGACC
 TAATCCTACCCGTGCCCGCAGCGCCTCTGCACACCCTTGTCTCCCAAGTACCCGCCACCCTTTCCATG
 GTCGAAGTCAAGGCGAGAAAGACGTGACCTTCTGGGGGAGACCCTGCCACGGTGTGAGGAGCTACAAG
 GGCAGAAGCTGGTGGAGGAGAAACGACCATGTCTACACGTGCTGCTGCAAAGACCCTGAGGAAGA
 GGAACTC

ACGCGTACGCGGCCGCTCGAG - GFP Tag - GTTTAA

Protein Sequence:

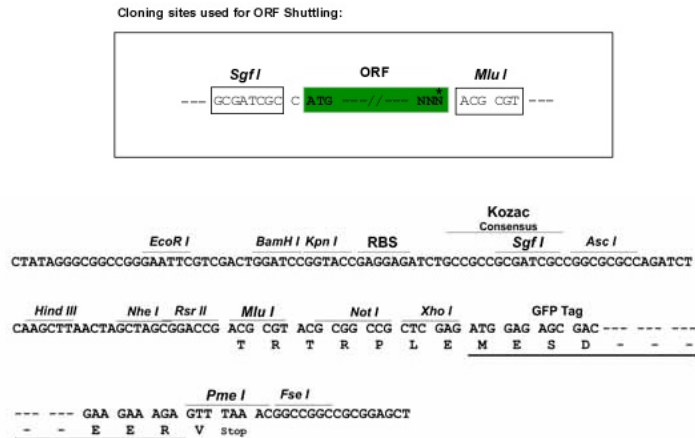
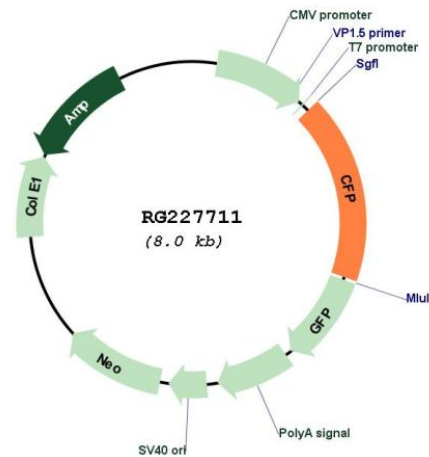
>RG227711 representing NM_001145252
 Red=Cloning site Green=Tags(s)

MITEGAQAPRLLLPPLLLLLTLPATGSDPVLCTFYEESSGKCKGLLGGGVSVEDCCLNTAFAYQKRSGG
 LCQPCRSRWSLWSTWAPCSVTCSEGSQRLRYRRCVWNGQCSGKVPAGTLEWQLQACEDQCCPEMGGWS
 GWGPWEPCSVTCSKGRTRRRACNHPAPKCGGHCPGQAQSEACDTQQVCPHTGAWATWGPWTPCASCH
 GGPHEPKETRSRKCSAPEPSQKPPGKPCPLAYEQRRCTGLPPCPVAGGWPWGPVSPCPVTCGLGQTM
 QRTCNHPVPQHGGPF CAGDATRTHICNTAVPCPVDGEWDSWGEWSPCIRRNMKSI SCQEIPGQSRGRTC
 RGRKFDGHRACAGQQDIRHCYSIQHCPKGSWSEWSTWGLCMPPCGPNPTRARQLCTPLLPKYPPTVSM
 VEGQGEKNVTFWGRPLPRCEELQGQKLVEEKRPCLHVPACKDPEEEEL

TRTRPLE - GFP Tag - V

Restriction Sites:

Sgfl-MluI

Cloning Scheme:

Plasmid Map:


ACCN: NM_001145252

ORF Size: 1407 bp

OTI Disclaimer: The molecular sequence of this clone aligns with the gene accession number as a point of reference only. However, individual transcript sequences of the same gene can differ through naturally occurring variations (e.g. polymorphisms), each with its own valid existence. This clone is substantially in agreement with the reference, but a complete review of all prevailing variants is recommended prior to use. [More info](#)

OTI Annotation: This clone was engineered to express the complete ORF with an expression tag. Expression varies depending on the nature of the gene.

Components: The ORF clone is ion-exchange column purified and shipped in a 2D barcoded Matrix tube containing 10ug of transfection-ready, dried plasmid DNA (reconstitute with 100 ul of water).

Reconstitution Method:

1. Centrifuge at 5,000xg for 5min.
2. Carefully open the tube and add 100ul of sterile water to dissolve the DNA.
3. Close the tube and incubate for 10 minutes at room temperature.
4. Briefly vortex the tube and then do a quick spin (less than 5000xg) to concentrate the liquid at the bottom.
5. Store the suspended plasmid at -20°C. The DNA is stable for at least one year from date of shipping when stored at -20°C.

RefSeq: [NM_001145252.1](#), [NP_001138724.1](#)

RefSeq Size: 1669 bp

RefSeq ORF: 1410 bp

Locus ID: 5199

UniProt ID: [P27918](#)

Cytogenetics: Xp11.23

Protein Families: Secreted Protein

Gene Summary: This gene encodes a plasma glycoprotein that positively regulates the alternative complement pathway of the innate immune system. This protein binds to many microbial surfaces and apoptotic cells and stabilizes the C3- and C5-convertase enzyme complexes in a feedback loop that ultimately leads to formation of the membrane attack complex and lysis of the target cell. Mutations in this gene result in two forms of properdin deficiency, which results in high susceptibility to meningococcal infections. Multiple alternatively spliced variants, encoding the same protein, have been identified.[provided by RefSeq, Feb 2009]