

Product datasheet for **RG227644**

SnoN (SKIL) (NM_001145097) Human Tagged ORF Clone

Product data:

Product Type:	Expression Plasmids
Product Name:	SnoN (SKIL) (NM_001145097) Human Tagged ORF Clone
Tag:	TurboGFP
Symbol:	SKIL
Synonyms:	SNO; SnoA; SnoI; SnoN
Mammalian Cell Selection:	Neomycin
Vector:	pCMV6-AC-GFP (PS100010)
E. coli Selection:	Ampicillin (100 ug/mL)



[View online »](#)

ORF Nucleotide Sequence:

>RG227644 representing NM_001145097
 Red=Cloning site Blue=ORF Green=Tags(s)

TTTTGTAATACGACTCACTATAGGGCGGCCGGAATTCGTCGACTGGATCCGGTACCGAGGAGATCTGCC
 GCCCGCATCGCC

ATGAAAACTCCAGACAAATTTCTCCTTGGTTACAGGCTCAACTAAAAACTGAATGGGATGGGAGATG
 ATGGCAGCCCCAGCGAAAAAATGATAACGGACATTTCGCAATGGAAAAACGATAAACCAAGGTGCC
 AACAGTTAAGAAGGAACCTTGGATGACTATGGAGAAGCACCAAGTGGAACTGATGGAGAGCATGTTAAG
 CGAACCTGACTTCTGTTCTGAACTTTGCATTTAAATCCCAGTTTGAACACACATTGGCACAATTCC
 ATTTAAGTAGTCAGAGCTCGCTGGTGGACCAGCAGCATTTTCTGCTCGCATTCCCAAGAAAGCATGTC
 GCCTACTGATTTCTGCCTTCCATCACCTCAGGTTCTTCTGGCCATTGCTCATCCCTTCAGATAGC
 TCCACAGAACTCACTCAGACTGTGTGGAAGGGAATCTATTTCTGTTTTCAAGTTGGAGGAGAAAAAGA
 GACTCTGTTTGCCTCAAGTCTTAAATTTCTGTTCTCCGAGAATTTACTCCAGCAATAAATACAGTGTG
 TGATGAACTGTACATATATTGTTCAAGGTGACTTCAGACCAGCTTCATATCTTAAAGGTACTGGGCATA
 CTTCCATTCAATGCCCATCCTGTGGGCTGATTACATTAAGTATGCACAAAGATTATGTAATGCTTTAT
 TGGCGCCACGAATTTTCTCAAATGGTAGCGTACTTCTGCTAAAAGCTCATTGGCCAGTTAAAGGA
 AACTGGCAGTGCCTTTGAAGTGGAGCATGAATGCCTAGGCAATGTCAGGGTTTTATTGACCCCAAGTTT
 TATGTTACGCCTGATGCTCCGTGATTCATGTCTGGAGTGTGTGGAATGTTTGCACCCAGACGTTT
 TGATGCATTCTCACAGATCACCTGACAAAAAAGTGGCCACTGGGGCTTTGAATCAGCTAAATGGCATTG
 CTATCTTCATGTGAACAAAAAATACTTAGGAACACCTGAAGAAAAAAGTGAAGATAATTTTGAAGAA
 ATGAAGGAGAAGTTAGCATGAGAAGTGGAAAGAGAAATCAATCCAAGACAGATGCACCATCAGGAATGG
 AATTACAGTCATGGTATCCTGTTATAAAGCAGGAAGGTGACCATGTTTCTCAGACACATTCAATTTTACA
 CCCCAGTACTACTTATACATGTGTGATAAAGTGGTGGCCCAATGTGTCACTTACTTCTGCTGTATCC
 CAGTCTAAAGAGCTCACAAAGACAGAGGCAATGCATCAATCTCAATAATTCTACAAGTAAAAGGAAAT
 CTGAGTCTGCCACTTGAACCTTAGTCAGAGACATAAACAAAGTGGGAATTGGCCTTGTGCTGCCCTTC
 ATCTCCGCTTCTGTGAAAGATGTCATTTGTGAGGATGATAAGGGAAAAATCATGGAAGAAGTAATGAGA
 ACTTATTTAAACAACAGGAAAACTAACTTGATTTTGCAAAAGCAACAACCTCAGATGGAAGTAA
 AAATGTTGAGTAGTTCAAATCTATGAAGGAACTCACTGAAGAACAGCAGAAATTTACAGAAAAGAGCTTGA
 ATCTTTCAGAAATGAACATGCTCAAAGAATGGAAGAATTTATGTTGAACAGAAAGACTTAGAGAAAAAA
 TTGGAGCAGATAATGAAGCAAAAATGTACTGTGACTCAAATTTAGAAAAAGACAAGAGGCTGAATATG
 CAGGACAGTTGGCAGAACTGAGGCAGAGATTGGACCATGCTGAGGCCGATAGGCAAGAATCCAAGATGA
 ACTCAGACAGGAACGGGAAGCAAGACAGAAGTTAGAGATGATGATAAAGAGCTAAAGCTGCAAATTCGT
 AAATCATCAAAGACTGCTAAAGAA

ACGCGTACGCGGCCGCTCGAG - GFP Tag - GTTTAA

Protein Sequence:

>RG227644 representing NM_001145097
 Red=Cloning site Green=Tags(s)

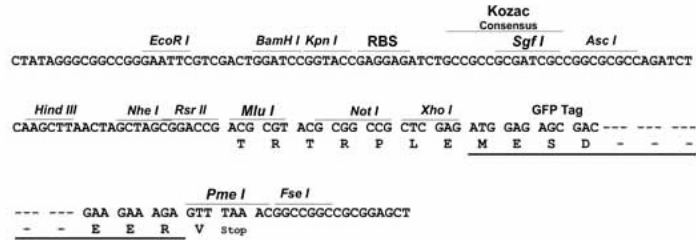
MENLQTNFSLVQGSTKLNMGDDGSPPAKMITDIHANGKTINKVPTVKKEHLDDYGEAPVETDGEHVK
 RTCTSVPETLHLNPSLKHHTLAQFHLSSQSSLGGPAAF SARHSQESMSPTVFLPLPSPQVLPGLLIPSDS
 STELTQTVLEGESISCFQVGGKRLCLPQVLNSVLRFTLQQINTVCDLYIYCSRCTSDQLHILKVLGI
 LPFNAPSCGLITLTAQRLCNALLRPRTFPQNGSVLPKSSLAQLKETGSAFEVEHECLGKCQGLFAPQF
 YVQPDAPCIQCLECCGMFAPQTFVMHSHRSPDKRTCHWGFESAKWHCYLHVNQYLGTPEEKKLIILEE
 MKEKFSMRSGKRNQSKTDAPSGMELQSWYPVIKQEGDHVSQTHSFLHPSYLYMCDKVVAPNVSLTSAVS
 QSKELTKTEANASISNNSTSKRKSESATCNLVRDINKVIGLVAAAASSPLLVKDVICEDDKGIMEEVMR
 TYLKQEQEKLNLILQKKQQLQMEVKMLSSSKSMKELTEEQNLQKELESLQNEHAQRMEEFYVEQKDLEKK
 LEQIMKQKCTCDSNLEKDKEAEYAGQLAELRQLDHAADRQELQDELQRERARQKLEMMIKELKQLIL
 KSSKTAKE

TRTRPLE - GFP Tag - V

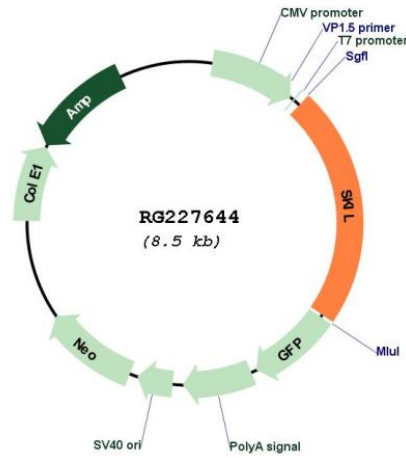
Restriction Sites: SgfI-MluI

Cloning Scheme:

Cloning sites used for ORF Shuttling:



Plasmid Map:



ACCN: NM_001145097

ORF Size: 1914 bp

OTI Disclaimer:	The molecular sequence of this clone aligns with the gene accession number as a point of reference only. However, individual transcript sequences of the same gene can differ through naturally occurring variations (e.g. polymorphisms), each with its own valid existence. This clone is substantially in agreement with the reference, but a complete review of all prevailing variants is recommended prior to use. More info
OTI Annotation:	This clone was engineered to express the complete ORF with an expression tag. Expression varies depending on the nature of the gene.
Components:	The ORF clone is ion-exchange column purified and shipped in a 2D barcoded Matrix tube containing 10ug of transfection-ready, dried plasmid DNA (reconstitute with 100 ul of water).
Reconstitution Method:	<ol style="list-style-type: none">1. Centrifuge at 5,000xg for 5min.2. Carefully open the tube and add 100ul of sterile water to dissolve the DNA.3. Close the tube and incubate for 10 minutes at room temperature.4. Briefly vortex the tube and then do a quick spin (less than 5000xg) to concentrate the liquid at the bottom.5. Store the suspended plasmid at -20°C. The DNA is stable for at least one year from date of shipping when stored at -20°C.
RefSeq:	NM_001145097.2 , NP_001138569.1
RefSeq Size:	3385 bp
RefSeq ORF:	1917 bp
Locus ID:	6498
UniProt ID:	P12757
Cytogenetics:	3q26.2
Protein Families:	Druggable Genome, Transcription Factors
Gene Summary:	The protein encoded by this gene is a component of the SMAD pathway, which regulates cell growth and differentiation through transforming growth factor-beta (TGFB). In the absence of ligand, the encoded protein binds to the promoter region of TGFB-responsive genes and recruits a nuclear repressor complex. TGFB signaling causes SMAD3 to enter the nucleus and degrade this protein, allowing these genes to be activated. Four transcript variants encoding three different isoforms have been found for this gene. [provided by RefSeq, Oct 2011]