

Product datasheet for **RG227630**

SERPINE2 (NM_001136528) Human Tagged ORF Clone

Product data:

Product Type:	Expression Plasmids
Product Name:	SERPINE2 (NM_001136528) Human Tagged ORF Clone
Tag:	TurboGFP
Symbol:	SERPINE2
Synonyms:	GDN; GDNPF; PI-7; PI7; PN-1; PN1; PNI
Mammalian Cell Selection:	Neomycin
Vector:	pCMV6-AC-GFP (PS100010)
E. coli Selection:	Ampicillin (100 ug/mL)
ORF Nucleotide Sequence:	>RG227630 representing NM_001136528 Red=Cloning site Blue=ORF Green=Tags(s)

TTTTGTAATACGACTCACTATAGGGCGGCCGGAATTCGTCGACTGGATCCGGTACCGAGGAGATCTGCC
GCC**CGATCGCC**

ATGAAGTGGCATCTCCCCTCTTCTCTTGGCCTCTGTGACGCTGCCTTCCATCTGCTCCCACTTCAATC
CTCTGTCTCTCGAGGAAGTAGGCTCCAACACGGGGATCCAGGTTTTCAATCAGATTGTGAAGTCGAGGCC
TCATGACAACATCGTGATCTCTCCCATGGGATTGCGTCGGTCTGGGGATGCTCAGCTGGGGCGGAC
GGCAGGACCAAGAAGCAGCTCGCCATGGTGATGAGATACGGCGTAAATGGAGTTGGTAAAATATTAAGA
AGATCAACAAGGCCATCGTCTCCAAGAAGAATAAAGACATTGTGACAGTGGCTAACGCCGTGTTTGTAA
GAATGCCTCTGAAATTGAAGTGCCTTTTGTACAAGGAACAAAGATGTGTTCCAGTGTGAGTCCCGAAT
GTGAACCTTGAGGATCCAGCCTCTGCCTGTGATTCCATCAATGCATGGGTAAAAATGAAACCAGGGATA
TGATTGACAATCTGCTGTCCCAGATCTTATTGATGGTGTGCTCACCAGACTGGTCTCGTCAACGCAGT
GTATTTCAAGGTCTGTGGAAATCACGGTTCCAACCCGAGAACAACAAAGAAACGCACTTTTCGTGGCAGCC
GACGGGAAATCCTATCAAGTGCCAATGCTGGCCAGCTCTCCGTGTTCCGGTGTGGGTGACAAAGTGCC
CCAATGATTTATGGTACAACCTCATTGAACTGCCTACCACGGGAAAGCATCAGCATGCTGATTGCACT
GCCGACTGAGAGCTCCACTCCGCTGTCTGCCATCATCCACACATCAGCACCAAGACCATAGACAGCTGG
ATGAGCATCATGGTGCCCAAGAGGGTGCAGGTGATCCTGCCAAGTTCACAGCTGTAGCACAACAGAT
TGAAGGAGCCGCTGAAAGTTCTTGGCATTACTGACATGTTTGATTTCATCAAAGGCAAAATTTGCAAAAAT
AAACAACAGGGTCAGAAAACCTCCATGTTTCTCATATCTTGCAAAAAGCAAAAATTGAAGTCAGTGAAGAT
GGAACCAAGCTTCAGCAGCAACAACCTGCAATTCTCATTGCAAGATCATCGCTCCCTGGTTTATAGTAG
ACAGACCTTTTCTGTTTTTCATCCGACATAATCCTACAGGTGCTGTGTTTTCATGGGCAGATAAACAA
ACCC

ACGCGTACGCGGCCGCTCGAG - GFP Tag - GTTTAA



[View online >](#)

Protein Sequence: >RG227630 representing NM_001136528
 Red=Cloning site Green=Tags(s)

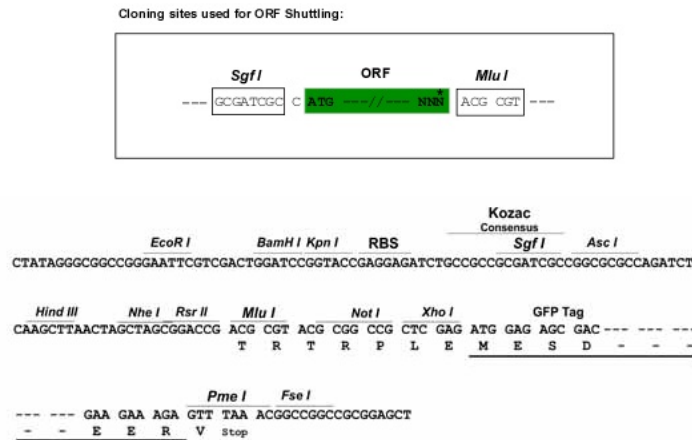
MNWHLPLFLLASVTLPSICSHFNPLSLEELGSNTGIQVFNQIVKSRPHDNIVISPHGIASVLGMLQLGAD
 GRTRKQLAMVMRYGVNGVGKILKKINKAIVSKKNKDIVTANAVFVKNASEIEVPFVTRNKDVFQCEVRN
 VNFEDPASACDSINAWKNETRDMIDNLLSPDLIDGVLTRLVLVNAVYFKGLWKSRLFQENTKKRTFVAA
 DGKSYQVPMLAQLSVFRCGSTSAPNDLWYNFIELPYHGESISMLIALPTESSTPLSAIIPHISTKTIIDSW
 MSIMVPKRVQVILPKFTAQAQTLKEPLKVLGITDMFSSKANFAKITTGSENLHVSHILQKAKIEVSED
 GTKASAATTAILIARSSPPWFIVDRPFLFFIRHNPTGAVLFMGQINKP

TRTRPLE - GFP Tag - V

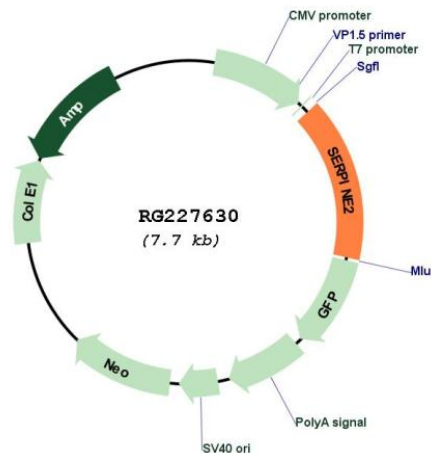
Restriction Sites:

Sgfl-MluI

Cloning Scheme:



Plasmid Map:



ACCN:

NM_001136528

ORF Size:	1191 bp
OTI Disclaimer:	The molecular sequence of this clone aligns with the gene accession number as a point of reference only. However, individual transcript sequences of the same gene can differ through naturally occurring variations (e.g. polymorphisms), each with its own valid existence. This clone is substantially in agreement with the reference, but a complete review of all prevailing variants is recommended prior to use. More info
OTI Annotation:	This clone was engineered to express the complete ORF with an expression tag. Expression varies depending on the nature of the gene.
Components:	The ORF clone is ion-exchange column purified and shipped in a 2D barcoded Matrix tube containing 10ug of transfection-ready, dried plasmid DNA (reconstitute with 100 ul of water).
Reconstitution Method:	<ol style="list-style-type: none">1. Centrifuge at 5,000xg for 5min.2. Carefully open the tube and add 100ul of sterile water to dissolve the DNA.3. Close the tube and incubate for 10 minutes at room temperature.4. Briefly vortex the tube and then do a quick spin (less than 5000xg) to concentrate the liquid at the bottom.5. Store the suspended plasmid at -20°C. The DNA is stable for at least one year from date of shipping when stored at -20°C.
RefSeq:	NM_001136528.1 , NP_001130000.1
RefSeq Size:	2256 bp
RefSeq ORF:	1194 bp
Locus ID:	5270
UniProt ID:	P07093
Cytogenetics:	2q36.1
Protein Families:	Druggable Genome, Secreted Protein
Gene Summary:	This gene encodes a member of the serpin family of proteins, a group of proteins that inhibit serine proteases. Thrombin, urokinase, plasmin and trypsin are among the proteases that this family member can inhibit. This gene is a susceptibility gene for chronic obstructive pulmonary disease and for emphysema. Alternative splicing results in multiple transcript variants. [provided by RefSeq, Aug 2012]