

## Product datasheet for **RG227619**

### HOPX (NM\_001145460) Human Tagged ORF Clone

#### Product data:

**Product Type:** Expression Plasmids  
**Product Name:** HOPX (NM\_001145460) Human Tagged ORF Clone  
**Tag:** TurboGFP  
**Symbol:** HOPX  
**Synonyms:** CAMEO; HOD; HOP; LAGY; NECC1; OB1; SMAP31; TOTO  
**Mammalian Cell Selection:** Neomycin  
**Vector:** pCMV6-AC-GFP (PS100010)  
**E. coli Selection:** Ampicillin (100 ug/mL)  
**ORF Nucleotide Sequence:** >RG227619 representing NM\_001145460  
Red=Cloning site Blue=ORF Green=Tags(s)

TTTTGTAATACGACTCACTATAGGGCGGCCGGAATTCGTCGACTGGATCCGGTACCGAGGAGATCTGCC  
GCC**CGATCGCC**

ATGCTCATTTTCCTGGGCTGTTACAGAAGAAGACTGGAAGAGCGCGCAGGGACCATGTCGGCGGAGACCG  
CGAGCGGCCCCACAGAGGACCAGGTGAAATCCTGGAGTACAACCTCAACAAGGTCGACAAGCACCCGGA  
TTCCACCACGCTGTGCCTCATCGCGCCGAGGCAGGCCTTCCGAGGAGGAGACCCAGGGTAGTGATTTG  
ATCTCCAGGAGCAAATATGGCACCCAGAAAGTAGCCCCAAAGAGAAGGCTACCCCATGATAGTCTGC  
CGTGCTTGCTTTCGATTACTTTCTCTACTGCCGCCCCAGTGTAAAGAAATGGTT

**ACGCGT**ACGCGGCCGCTCGAG - GFP Tag - GTTTAA

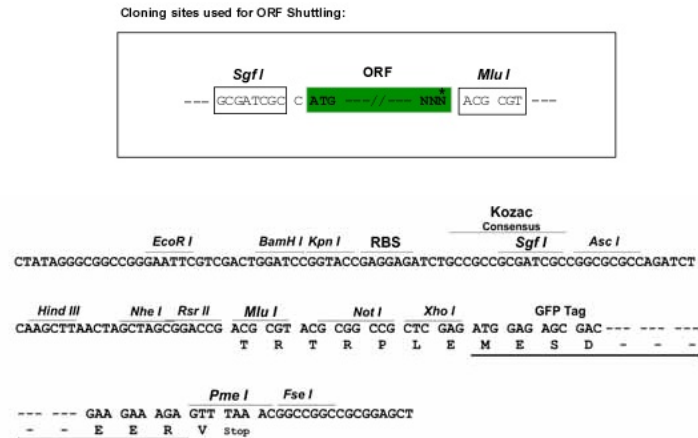
**Protein Sequence:** >RG227619 representing NM\_001145460  
Red=Cloning site Green=Tags(s)  
MLIFLGCYRRRLEERAGTMSAETASGPTEDQVEILEYNFNKVDKHPDSTTLCLIAAEAGLSEETQGS  
DLISRSKIWHPESSPQREGYPHDSLPLCLAFDYFSLPPQCKEMV

**TRTRPLE** - GFP Tag - V

**Restriction Sites:** Sgfl-MluI



[View online »](#)

**Cloning Scheme:**


**ACCN:** NM\_001145460

**ORF Size:** 336 bp

**OTI Disclaimer:** The molecular sequence of this clone aligns with the gene accession number as a point of reference only. However, individual transcript sequences of the same gene can differ through naturally occurring variations (e.g. polymorphisms), each with its own valid existence. This clone is substantially in agreement with the reference, but a complete review of all prevailing variants is recommended prior to use. [More info](#)

**OTI Annotation:** This clone was engineered to express the complete ORF with an expression tag. Expression varies depending on the nature of the gene.

**Components:** The ORF clone is ion-exchange column purified and shipped in a 2D barcoded Matrix tube containing 10ug of transfection-ready, dried plasmid DNA (reconstitute with 100 ul of water).

**Reconstitution Method:**

1. Centrifuge at 5,000xg for 5min.
2. Carefully open the tube and add 100ul of sterile water to dissolve the DNA.
3. Close the tube and incubate for 10 minutes at room temperature.
4. Briefly vortex the tube and then do a quick spin (less than 5000xg) to concentrate the liquid at the bottom.
5. Store the suspended plasmid at -20°C. The DNA is stable for at least one year from date of shipping when stored at -20°C.

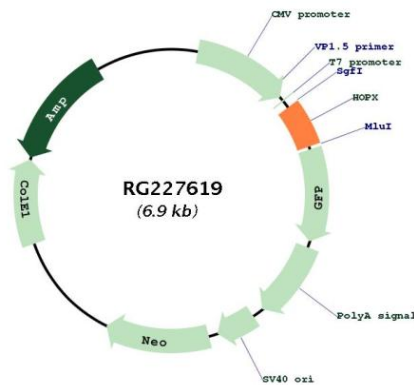
**RefSeq:** [NM\\_001145460.1](#), [NP\\_001138932.1](#)

**RefSeq Size:** 1682 bp

**RefSeq ORF:** 339 bp

**Locus ID:** 84525  
**UniProt ID:** [Q9BPY8](#)  
**Cytogenetics:** 4q12  
**Protein Families:** Transcription Factors  
**Gene Summary:** The protein encoded by this gene is a homeodomain protein that lacks certain conserved residues required for DNA binding. It was reported that choriocarcinoma cell lines and tissues failed to express this gene, which suggested the possible involvement of this gene in malignant conversion of placental trophoblasts. Studies in mice suggest that this protein may interact with serum response factor (SRF) and modulate SRF-dependent cardiac-specific gene expression and cardiac development. Multiple alternatively spliced transcript variants have been identified for this gene. [provided by RefSeq, Feb 2009]

**Product images:**



Circular map for RG227619