

Product datasheet for **RG227616**

ST6GAL2 (NM_001142351) Human Tagged ORF Clone

Product data:

Product Type:	Expression Plasmids
Product Name:	ST6GAL2 (NM_001142351) Human Tagged ORF Clone
Tag:	TurboGFP
Symbol:	ST6GAL2
Synonyms:	SIAT2; ST6GalII
Mammalian Cell Selection:	Neomycin
Vector:	pCMV6-AC-GFP (PS100010)
E. coli Selection:	Ampicillin (100 ug/mL)



[View online »](#)

ORF Nucleotide Sequence:

>RG227616 representing NM_001142351
 Red=Cloning site Blue=ORF Green=Tags(s)

TTTTGTAATACGACTCACTATAGGGCGGCCGGAATTCGTCGACTGGATCCGGTACCGAGGAGATCTGCC
 GCC**GCGATCGCC**

ATGAAACCACTTGAAGCAATGGAGACAACGAATGCTTTTCGGAATATTCGCTTGGGGCTCCTCTTTT
 TGCTGATTTTCATCTACTTCACCGACAGCAACCCCGCTGAGCCTGTACCCAGCTCCCTCTCTTCCTGGA
 GACCAGGAGGCTCCTGCCGGTGCAGGGGAAGCAGCGGGCCATCATGGGCGCCGCACATGAGCCCTCCCCG
 CCTGGGGGCTGGACGCACGCCAGGCGCTGCCCGCGCCACCCAGCGGTTCTTTTCATGCGGGGCTG
 GAGACCTGCAGAAATGGGCCAGTCCCAAGATGGGTTTGAACATAAAGAGTTTTTTTCATCCAGGTGGG
 GAGAAAATCTCAAAGTCTTTCTACCCGGAGGATGACGACTACTTTTTGCTGCTGGTACGCCAGGGTGG
 CACAGCCACTCAGGGGACATTGGGATTCCTTCCCCGGGGAGCCAGGCCACGGGAGGGGGCTTTTC
 CGGCTGCACAGGTCCAGAGGAGGCGGGTGAAGAAGAGGCCACGGAGGCAGAGAAGGAGCCACGTGTTGA
 GGAGGGGACGACGGCGACAGGCTGTACTCTCCATGTCCAGGGCCTTCTGTACCGGCTCTGGAAGGGG
 AACGTCTCTTCCAAAATGCTGAACCCGCGCCTGCAGAAGGCGATGAAGGATTACCTGACCCCAACAAGC
 ACGGGGTGCGCTTCCGCGGAAGCGGGAGGCGGGCTGAGCAGGGCACAGCTGCTGTGCCAGCTGCGGAG
 CCGCGCGCGCTGCGGACGCTGGACGGCACCGAGGCGCCCTTTCTGCGCTGGGCTGGCGGCGCCTGGT
 CCCGCCGTGCCCTGAGCCAGCTGCACCCCGCGGCTGCGCAGCTGCGCTGTGTCATGTCTGCAGGCG
 CAATCCTCAACTCTTCTTGGGCGAGGAAATAGATTCTCATGATGCGGTTTTGAGATTTAACTCTGCTCC
 TACAGTGGTTATGAGAAAGATGTTGGGAATAAAACCACCATACGCATCATTAAATTCGAGATTCTGACC
 AACCCAGCCATCACTTCACTGACAGTTCACTGTATAAAGACGTCATTTGGTGGCTGGGACCCTGCCC
 CATATTCGCAAAATCTTAACTGTGGTACAAAAACCGGATTACAACCTGTTCACTCCATATATTCAGCA
 TGGTCAGAGAAAACCCAAATCAGCCATTTTACATTCCTCCTAAATTTATATGGCAGCTCTGGGATATT
 ATCCAGGAGAACACTAAAGAGAAGATCAACCAACCCACCATCTTCTGTTTTCATTGGAATCCTCATAA
 TGATGTCCATGTGCAGAGAGGTGCACGTGTATGAATATATCCCATCCGTGCGGCAGACGGAGCTGTGCCA
 CTACCAGAGCTGTACTACGACGACGCTGCACCCCTCGGGGCGTACCACCCACTACTCTATGAGAAGCTC
 CTGGTGCAGCGCCTGAACATGGGCACGCAGGGGATTTGCATCGCAAGGGCAAGGTGTTCTTCCCGGCT
 TCCAGGCGGTGCACTGCCCTGCACCAAGTCCAGTCATTCCACACTCT

ACGCGTACGCGGCCGCTCGAG – GFP Tag – GTTTAA

Protein Sequence:

>RG227616 representing NM_001142351
 Red=Cloning site Green=Tags(s)

MKPHLKQWRQRLFGIFAWGLLFLIFIFYFTDSNPAEPVPSLSFLETRRLLPVQKQRAIMGAAHEPSP
 PGGLDARQALPRAHPAGSFHAGPGDLQKWAQSQDGFHEKFEFFSSQVGRKSQSAFYPEDDDYFFAAGQPGW
 HSHTQGLGFSPGEPGREGAFPAAQVQRRRVKRRRRQRRSHVLEEGDDGDRLYSSMSRAFLYRLWKG
 NVSSKMLNPRLQKAMKDYLTANKHGVRFRGKREAGLSRAQLLCLRSRVRVRLDGTAPFSALGWRRLV
 PAVPLSQLHPRGLRSCAVVMSAGAILNSSLGEEIDSHDAVLRFNAPTRGYEKDVGKTTIRIINSQILT
 NPSSHFIIDSSLYKDVILVAWDPAPYSANLNLWYKPDYNLFTPYIQHRQRNPNQPFYILHPKFIWQLWDI
 IQENTKEKIQPNPPSSGFIGILIMMSMCREVHVVEYIPSVRQTELCYHELHYDAACTLGAYHPLLYEKL
 LVQRLNMGTDGLHRKGVVLPGFQAVHCPAPSPVIPHS

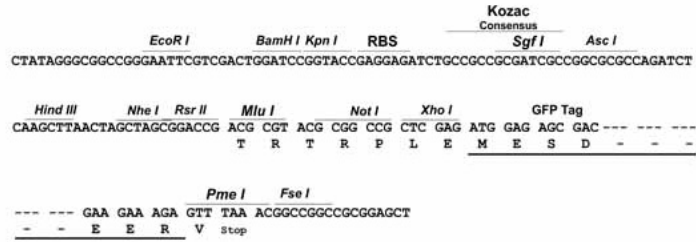
TRTRPLE – GFP Tag – V

Restriction Sites:

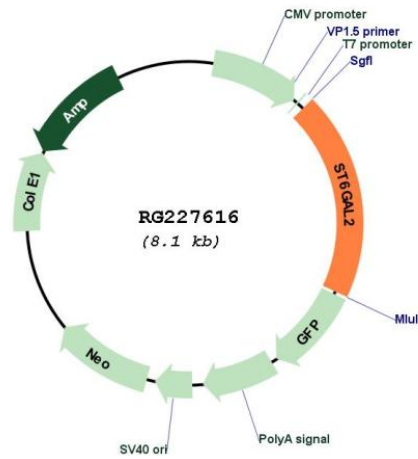
Sgfl-Mlul

Cloning Scheme:

Cloning sites used for ORF Shutting:



Plasmid Map:



ACCN:	NM_001142351
ORF Size:	1587 bp
OTI Disclaimer:	The molecular sequence of this clone aligns with the gene accession number as a point of reference only. However, individual transcript sequences of the same gene can differ through naturally occurring variations (e.g. polymorphisms), each with its own valid existence. This clone is substantially in agreement with the reference, but a complete review of all prevailing variants is recommended prior to use. More info
OTI Annotation:	This clone was engineered to express the complete ORF with an expression tag. Expression varies depending on the nature of the gene.
Components:	The ORF clone is ion-exchange column purified and shipped in a 2D barcoded Matrix tube containing 10ug of transfection-ready, dried plasmid DNA (reconstitute with 100 ul of water).
Reconstitution Method:	<ol style="list-style-type: none">1. Centrifuge at 5,000xg for 5min.2. Carefully open the tube and add 100ul of sterile water to dissolve the DNA.3. Close the tube and incubate for 10 minutes at room temperature.4. Briefly vortex the tube and then do a quick spin (less than 5000xg) to concentrate the liquid at the bottom.5. Store the suspended plasmid at -20°C. The DNA is stable for at least one year from date of shipping when stored at -20°C.
RefSeq:	NM_001142351.2
RefSeq Size:	6801 bp
RefSeq ORF:	1590 bp
Locus ID:	84620
UniProt ID:	Q96JF0
Cytogenetics:	2q12.3
Protein Families:	Transmembrane
Gene Summary:	This locus encodes a sialyltransferase. The encoded type II transmembrane protein catalyzes the transfer of sialic acid from CMP to an oligosaccharide substrate. Polymorphisms at this locus may be associated with variations in risperidone response in schizophrenic patients. Alternatively spliced transcript variants have been described. [provided by RefSeq, Jan 2012]