

Product datasheet for **RG227589**

OTUD5 (NM_001136158) Human Tagged ORF Clone

Product data:

Product Type:	Expression Plasmids
Product Name:	OTUD5 (NM_001136158) Human Tagged ORF Clone
Tag:	TurboGFP
Symbol:	OTUD5
Synonyms:	DUBA; MCAND
Mammalian Cell Selection:	Neomycin
Vector:	pCMV6-AC-GFP (PS100010)
E. coli Selection:	Ampicillin (100 ug/mL)



[View online »](#)

ORF Nucleotide Sequence:

>RG227589 representing NM_001136158
 Red=Cloning site Blue=ORF Green=Tags(s)

GACGTTGTATACGACTCCTATAGGGCGGCCGGGAATTCGTCGACTGGATCCGGTACCGAGGAGATCTGCC
 GCCGGCGCGCC

ATGACTATACTCCCCAAAAAAGAGCCGCCCTCCGACGCCACCCGCCAACGAGCCGCCGCCGCCCGG
 GGCCGATGCCCCGGCGCCGCGCGGCGGAGGTGTGGCGTGGCGGGCGGCGCACGGCGTGGCGCG
 CGGCGATCGGACCGTGACTCCGGCGTCTGGGGCCCGTCCGCGAGCTTCGCCACCGCCTCAAGGCCCG
 CTACCAGGACCGCGCGGCGCTCTTCATCGCTGGGCGTGGCCGTGCCGCCTGGTGCAGTGGCGGGTCCCC
 GGCCACAACAGGCTTCTCACCTCCTTGCAGGGGCGCCAGGTGGTCCCGCGGCGGTCCCGCGACGCGCT
 GGGCGCAGCGCGCGGGTGTGGGTGCCGCGGCGTGGTGGTGGTGTGGGTGGTGGCCTAGGCGTGGG
 GGCTGCTGCTCCGGCCTGGGCACAGCAAGCGGCGACGTCAAGCTCCCGGGTGGCGCGTGGCGGGG
 GCAGTCCCGAGCGTGGAGAGTCCGCGCAGGCTACAACAGTGAGGACGAGTATGAGGCGGTGCAGCAG
 CATCGAGGCTATGACCCTGCCACTGTCGAGCAGCAGGAGCATTGTTTTAAAAGGCCCTACGAGACAAG
 AAGGGTTCATCATCAAGCAGATGAAGGAGGATGGCGCCTGTCTCTCCGGCTGTAGCTGACCAGGTGT
 ATGGAGACCAGGACATGCATGAGGTTGTGCGAAAGCATTGCATGGACTATCTGATGAAGAATGCCGACTA
 CTCTCCAATATGTACAGAGGACTTTACCACCTACATTAACAGGAAGCGGAAAAACAATTGCCATGGC
 AACCACATTGAGATGCAGGCCATGGCAGAGATGTACAACCGTCTGTGGAGGTGTACCAGTACAGCACAG
 AACCCATCAACACATTCCATGGGATACATCAAAACGAGGACGAACCCATTCGTGTTAGCTACCATCGAA
 TATCCACTATAATTGAGTGGTGAATCCTAACAAGGCCACCATTGGTGTGGGGTGGGCGTCCCATCATTC
 AAACCAGGGTTGCGAGCAGTCTCTGATGAAGAATGCCATAAAAACATCGGAGGAGTCTGGATTGAAC
 AGCAGATGCTAGAAGACAAGAAACGGGCCACAGACTGGGAGGCCACAAATGAAGCCATCGAGGAGCAGT
 GGCTCGGGAATCCTACCTGCAGTGGTTGCGGGATCAGGAGAAACAGGCTCGCCAGGTCCGAGGCCCAGC
 CAGCCCCGAAAGCCAGCGCCACATGCAGTTCCGCCACAGCAGCAGCCTCCAGTGGCCTGGAGGAGTGA
 CTAGCCGTTCCCGCGGCGAGCGGAGTTCAGCCTCGTCACTGAGCACCTGAGCTGCATGCTGAATTGGG
 CATGAAGCCCCCTTCCCAGGCACTGTTTTAGCTCTTGCCAAACCTCCTTCGCCCTGTGCGCCAGGTACA
 AGCAGTCACTTCCGGCAGGGGCCAGCCGGCACTTCCCCCTTGTGTCCCTTACCCTGCTTTGGAGT
 GCCGGGCCCTCATTGAGCAGATGCCCCCTGCTCTTTGGTCTGAATGACTGGGATGATGATGAGATCCT
 AGCTTCGGTGCTGGCAGTGTCCAACAGGAATACCTAGACAGTATGAAGAAAAACAAGTGCACAGAGAC
 CCGCCCCAGACAAGAGT

ACGCGTACGCGGCCGCTCGAG - GFP Tag - GTTTAA

Protein Sequence:

>RG227589 representing NM_001136158
 Red=Cloning site Green=Tags(s)

MTILPKKKPPPDADPANEPMPMPAPRRGGVGVGGGTGVGGDRDRDSGVVGARPRASPPPPQGP
 LPGPPGALHRWALAVPPGAVAGPRPQQASPPPCGGPGGPGGDALGAAAAGVGAAGVVGVGGAAGVGV
 GCCSPGHSKRRRQAPGVGAVGGSPEREVEVGAGYNSDEYEAAAARIEAMDPATVEQEHWFELKRD
 KGFIIKQMKEDGACLFRVADQVYGDQDMHEVVRKHCMDYLMKNADYFSNYVTEDFTTYINRKRNNCHG
 NHIEMQAMAEMYNRPVEVYQSTEPINTFHGIHQNEDEPIRVSYHRNIHNSVNPKNATIGVGLGLPSF
 KPGFAEQSLMKNAIKTSEESWIEQMLDKKRDWEATNEAIEEQVARESYLQWLRDQEKQARQVRGPS
 QPRKASATCSSATAAASSGLEEWTSRSPQRSSASSPEHPELHAELGMKPPSPGTVLALAKPPSPCAPGT
 SSQFSAGADRATSPLVSLYPALECRALIQMSPSAFGLNDWDDDEILASVLAVSQQEYLDMSMKKNKVHRD
 PPPDKS

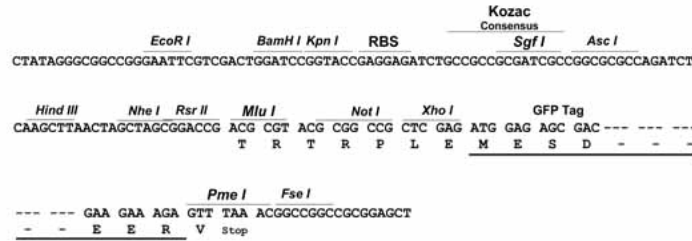
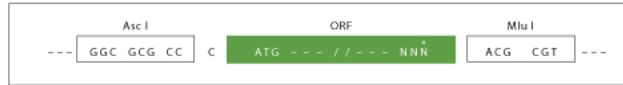
TRTRPLE - GFP Tag - V

Restriction Sites:

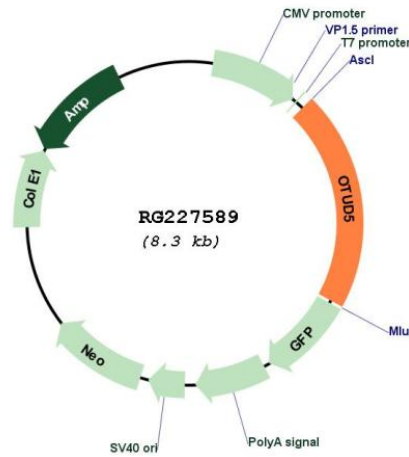
AscI-MluI

Cloning Scheme:

Cloning sites used for ORF Shuttling:



Plasmid Map:



ACCN: NM_001136158
 ORF Size: 1698 bp

OTI Disclaimer:	The molecular sequence of this clone aligns with the gene accession number as a point of reference only. However, individual transcript sequences of the same gene can differ through naturally occurring variations (e.g. polymorphisms), each with its own valid existence. This clone is substantially in agreement with the reference, but a complete review of all prevailing variants is recommended prior to use. More info
OTI Annotation:	This clone was engineered to express the complete ORF with an expression tag. Expression varies depending on the nature of the gene.
Components:	The ORF clone is ion-exchange column purified and shipped in a 2D barcoded Matrix tube containing 10ug of transfection-ready, dried plasmid DNA (reconstitute with 100 ul of water).
Reconstitution Method:	<ol style="list-style-type: none">1. Centrifuge at 5,000xg for 5min.2. Carefully open the tube and add 100ul of sterile water to dissolve the DNA.3. Close the tube and incubate for 10 minutes at room temperature.4. Briefly vortex the tube and then do a quick spin (less than 5000xg) to concentrate the liquid at the bottom.5. Store the suspended plasmid at -20°C. The DNA is stable for at least one year from date of shipping when stored at -20°C.
RefSeq:	NM_001136158.1 , NP_001129630.1
RefSeq Size:	2700 bp
RefSeq ORF:	1701 bp
Locus ID:	55593
UniProt ID:	Q96G74
Cytogenetics:	Xp11.23
Protein Families:	Protease
Protein Pathways:	RIG-I-like receptor signaling pathway
Gene Summary:	This gene encodes a member of the OTU (ovarian tumor) domain-containing cysteine protease superfamily. The OTU domain confers deubiquitinase activity and the encoded protein has been shown to suppress the type I interferon-dependent innate immune response by cleaving the polyubiquitin chain from an essential type I interferon adaptor protein. Cleavage results in disassociation of the adaptor protein from a downstream signaling complex and disruption of the type I interferon signaling cascade. Alternatively spliced transcript variants encoding different isoforms have been described. [provided by RefSeq, Oct 2008]