

Product datasheet for **RG227586**

ANK1 (NM_001142446) Human Tagged ORF Clone

Product data:

Product Type: Expression Plasmids
Product Name: ANK1 (NM_001142446) Human Tagged ORF Clone
Tag: TurboGFP
Symbol: ANK1
Synonyms: ANK; SPH1; SPH2
Mammalian Cell Selection: Neomycin
Vector: pCMV6-AC-GFP (PS100010)
E. coli Selection: Ampicillin (100 ug/mL)
ORF Nucleotide Sequence: >RG227586 representing NM_001142446
Red=Cloning site Blue=ORF Green=Tags(s)

TTTTGTAATACGACTCACTATAGGGCGGCCGGAATTCGTCGACTGGATCCGGTACCGAGGAGATCTGCC
GCC**CGATCGCC**

ATGGCTCAAGCGGCCAAACAGCTGAAGAAAATCAAAGACATCGAGGCGCAGGCCCTCCAGGAGCAGAAGG
AGAAGGAGGAATCCAACAGGAAGCGGAGAAACCGCTCCCGTGACCGAAAGAAGAAGGCCGATGCTGCTAC
CAGCTTTCTGAGAGCAGCAAGATCAGGTAACCTGGACAAAGCTTTGGATCACCTGCGGAATGGGGTAGAT
ATTAACACCTGTAACAGAAATGGGTTGAATGGCTTGCATCTGGCTTCTAAGGAAGCCATGTGAAAATGG
TGTTGAACTTCTGCACAAAGAAATCATTCTAGAAACGACAACCAAGAAGGGGAACCGGCCCTGCACAT
CGCTGCTCTAGCCGGGCAGGATGAGGTGGTCCGGGAGCTTGTCAACTATGGAGCCAACGTC AACGCCAG
TCACAGAAAGGTTTTACCCCTGTACATGGCAGCACAAGAGAACCACCTTGAAGTGGTTAAGTTTTTAC
TGGAAAATGGAGCTAACCAGAATGTAGCCACAGAAGACGGCTTACGCGCTCTGGCGGTAGCCCTGCAGCA
GGGCCATGAGAACGTCGTCGCGCACCTCATCACTACGGCACCAAGGGGAAGGTGCGCCTCCCGGCCCTG
CACATCGCGGCCCGCAACGACGACACGCGCACGGCTGCGGTGCTGCTGCAGAACGACCCCAACCCGGACG
TGCTTTCCAAGACGGGATTCACGCCCTGCACATTGCGGCTCACTACGAGAACCTCAACGTGGCCCGATT
GCTCCTCAACAGAGGAGCCAGCGTCAATTTACACCACAGAACGGCATCACGCCACTGCACATCGCCTCC
CGCAGGGCAACGTGATCATGGTGGCGGCTGCTGCTGGATCGGGGAGCCAGATGAAAACCAAGACCAAGG
ACGAAATTGACACCTCTCCACTGTGCAGCTCGAAAATGGGCACGTGCGAATCTCAGAGATCCTGCTGGACCA
CGGGGCACCAATCCAAGCCAAAACCAAGAACGGCCTGTCCCAATTACATGGCGGCTCAGGGAGACCAC
CTCGACTGTGTCGGCTCCTGTTGCAATACGACGAGAGATAGACGACATCACCTGGACCACCTGACCC
CACTCCACGTGGCTGCCACTGTGGACACCACAGGGTGGCTAAGGTCTTCTGGATAAAGGGGCCAAACC
CAACTCCAGAGCCCTGAATGGCTTTACCCCTTACACATCGCCTGCAAAAAGAACCACGTCCGTGTCATG
GAGCTGCTGCTGAAGACGGGAGCCTCGATCGACGCGGTACCGAGTCTGGCCTGACACCTCTCCACGTGG
CCTCCTCATGGGGCACCTTCCCATCGTGAAGAACCTCCTGCAGCGGGGGCGTCGCCAACGTCTCCAA
CGTGAAAGTGGAGACCCGCTACACATGGCAGCCAGAGCCGGGCACACGGAAGTGGCCAAATATTTACTC



[View online >](#)

CAGAACAAAGCCAAAGTCAATGCCAAGGCCAAGGATGACCAGACCCCACTTCACTGTGCAGCTCGCATCG
 GCCACACAACATGGTGAAGCTCCTGCTGGAAAAAATACGCCAACCCCAACCTGGCCACCACCGCCGGCA
 CACCCCTGCACATTGCAGCCCGTGAGGGCCATGTGAAACAGTCTGGCCCTTCTGAAAAAGGAAGCA
 TCCCAGGCCTGCATGACCAAGAAAGGATTTACCCCTCTGCACGTGGCGGCCAAGTACGGGAAGGTGCGGG
 TGGCAGAGCTGCTGCTGGAGCGGGACGCACCCGAATGCTGCCGAAAAAATGGCTGACCCCTGCA
 CGTGGCCGTCCATCACAACAACCTGGACATCGTCAAGCTGCTGCTCCCCGGGGCGGCTCCCCGCACAGC
 CCTGCCGTGAATGGTACACCCCTTTGCACATCGCTGCCAAGCAGAACCAGGTGGAGGTGGCCCGTAGTC
 TGCTGCAGTATGGGGCTCAGCAAACGCCGAGTCGGTGAAGGTGTGACGCCCTTCACTGGCCGCCA
 GGAGGGCCACGCAGAGATGGTGGCTGCTGCTCTCGAAACAAGCCAATGGCAACCTGGGGAACAAGAGC
 GGACTCACTCCCCTCCATCTGGTAGCACAAGAAGGCCACGTTCCAGTGGCAGATGTGCTGATCAAACACG
 GCGTCATGGTGGACGCCACCACCCGGATGGGCTACACTCCCCTCCATGTGGCCAGTCACTATGAAAAAT
 CAAGCTGGTGAAGTTTCTGCTGCAGCACCAGGCAGATGTCAATGCCAAGACCAAGCTAGGATACAGCCCC
 CTGCACCAGGCAGCCAGCAGGGACACACAGACATCGTGACTCTGCTTCTGAAAAACGGTGTCTCCCAA
 ACGAGGTCAGCTCGGATGGAACCACACCTCTGGCCATAGCCAAGCGCTTGGGCTACATTTCTGCACCGA
 CGTGCTCAAGGTGTCACGGATGAAACCAAGTTTCTGTTAGTCAGTGATAAGCATCGAATGAGTTTCCCT
 GAGACAGTTGATGAGATCCTGGATGTCTCGGAAGATGAAGGAACCTGCTCATATAACTATAATGGGGGAAG
 AACTCATCAGTTCAAGGCTGAGAGGCGGGATTCCAGGGATGTTGATGAAGAGAAGGAGCTGCTGGATT
 TGTGCCGAAGCTAGACCAAGTGGTGAATCTCCAGCCATCCCAGGATTCCCTGTGCCATGCCTGAGACA
 GTGGTGATCAGGTGAGAAGAGCAGGAGCAGGCATCTAAAGAGTATGATGAGGACTCCCTCATCCCAGCA
 GCCCGCCACCGAGACCTCAGACAACATCAGCCCGGTGGCCAGCCCGGTGCATACAGGGTTTCTGGTGAG
 CTTTATGGTTGACGCCCGGGGTGGTCCATGAGAGGAAGTCGCCACAACGGCCTGCGAGTGGTGATCCCG
 CCACGGACGTGCGCAGCGCCACCCGCATCACCTGCCCGCTGGTCAAGCCCCAGAAGCTCAGCAGCCCGC
 CCCCCTGGCCGAGGAGGGCCCTGGCCAGCAGGATCATAGCACTGGGGCCACGGGGCCACAGTTCTCT
 GAGCCCTGTAATCGTGGAGATCCCGCACTTTGCCCTCCATGGCCGTGGAGACCCGAGCTCGTGGTTCTG
 AGGAGCGAAAAACGGCTCCGTGTGGAAGGAGCACAGGAGCCGCTATGGAGAGAGCTACCTGGATCAGATCC
 TCAACGGGATGGACGAAGAGCTGGGAGCCTGGAGGAGCTAGAGAAGAAGAGGGTGTGCCGAATCATCAC
 CACCGACTTCCCGCTGTACTTCTGTGATCATGTCACGGCTCTGCCAGGACTACGACACCATCGGTCCCGAA
 GGGGGCTCCCTGAAGAGCAAGCTGGTCCCCTGGTACAGGCAACGTTCCCGGAGAATGCCGTACCAAGA
 GAGTGAAGCTGGCTCTGCAGGCCAGCCTGTCCCAGTACGCTTGTCACTAAGCTCCTGGCAACCAGGC
 CACATTCAGCCCCATTGTACCCGTGGAGCCCCGGCGCCGGAAGTCCACCGCCCCATTGGCTTCGGATC
 CCACTACCTCCTTCTGGACCGACAACCCGAGGGACAGCGGGAGGGAGACACCACAGCCTGCGCCTGC
 TTTGCAGCGTCATTGGAGGAACAGACCAAGCCAGTGGGAAGACATAACAGGAACCACCAAACCTGTATA
 TGCCAACGAGTGCGCCAACTTACCACCAATGTCTCTGCCAGTTTTGGCTGTGGACTGTCTCCGACT
 GCTGAGGCTGTGAACTTTGCCACCCTGCTGTACAAAGAGCTCACTGCAGTGCCCTACATGGCCAAATTCG
 TCATCTTTGCCAAGATGAATGACCCCCGAGAGGGGCGCCTGCGCTGCTACTGCATGACAGATGATAAAGT
 GGACAAGACCCTGGAGCAGCATGAGAATTCGTGGAGGTGGCCGGAGCAGGGACATAGAGGTGTTGGAA
 GGAATGTCCCTGTTTGCAGAATCTCTGGAACTGGTGCCTGTGAAGAAAGCTGCCAGCAGCGGAGCT
 TCCACTCCAGTCATTTCCGGGAGAACCCTCTGGCCATGCCTGTAAGGTGAGGGACAGCAGTCGAGAGCC
 GGGAGGGTCCCTGTCGTTTCTGCGCAAGCGGATGAAGTACGAGGACACCCAGCACATTTCTGCCACCTG
 AACATCACCATGCCCCCTGCGCCAAGGGAAGTGGAGCCGAAGATAGGAGAAGGACCCCGACGCCCTGG
 CCCTGCGATACAGCATTCTCAGTGAGTCCACACAGGTTCTCTCAGTGGGACAGAGCAGGCAGAGATGAA
 GATGGCTGTTATCTCAGAGCACCTCGGTCTCAGCTGGGCAGAGTTGGCCGGGAGCTGCAGTTCACTGTG
 GAAGACATCAACAGGATCCGAGTGGAAAAATCCCAACTCCCTGTTGGAGCAGAGTGTGGCCTTGTGAACC
 TCTGGGTCACTCCGTGAAGGCCAAAACGCAACATGGAGAATCTGTACACAGCCCTGCAGAGCATTGACCG
 TGGCGAGATCGTGAACATGCTGGAGGGTCCGGCCGACAGAGCCGCAACTGAAGCCAGACAGCGGCAC
 ACCGACCCGACTACTCGCTGTACCCTCCAGATGAATGGTTACTCCTCACTGCAGGACGAGCTGCTGT
 CCCCTGCCTCCCTGGGCTGTGCACTTTCTCTCCGCTACGTGCAGACCAGTACTGGAATGAGGTGGCCGT
 CCTAGACGCCATCCCCTTGGCGGCCACGGAGCATGACACCATGCTGGAGATGTCTGACATGACAGGTGTGG
 TCTGCGGGCTCACGCCTTCTCTGGTCACTGCTGAGGACTCCTCTCTGGAGTGTAGCAAGGCTGAGGACT
 CTGATGCCACAGGTACAGAGTGGAAAGTTGGAGGGGCACTCTCAGAGGAACCGGGGGCCCCGAGTTGGG
 CTCTCTGGAACCTGTGGAGGACGACACAGTGGATTGAGTGCACAAAATGGCCTTATCGATTTGCTTGAA
 CAGGAGGAAGGTGAGAGTCAAGAGAAGCTGCCAGTTCTAAGAGGCAGGATGACCGACAGGTGCAG

GGCAGGACTCAGAGAATGAAGTGTCTTGTTCAGGCCATCAGAGGGGGCAAGCCGAATCACACATTC
 CCCACCCTGAGTCAGGTGACGGAGAGGAGTCAGGACAGACTGCAGGACTGGGATGCAGACGGCTCGATT
 GTCTCATACCTGCAAGATGCTGCACAAGGTTCTCTGGCAAGAGGAGGTCACGCAAGGTCACACTATTCC
 AGGGAACAAGTACCATGACTGAAGGGCTAGAGCCCGTGGATCTCAGGAGTACGAGAAGGTCCTGGTGTCT
 TGTAAGTGAGCACACGTGGACAGAACAGCCCGAGGCTGAGAGCTCCAGGCCGACAGGGACCCGAGGCGAG
 CAAGGCCAAGAAGAGCAGGTGCAGGAGGCCAAGAACACCTTACCCAAGTGGTGCAGGGGAATGAGTTTC
 AGAATATTCCAGGGGAGCAGGTGACAGAGGAGCAATTACGGATGACAGGGCAACATTGTCACCAAGAA
 GATCATTTCGCAAGGTGGTTCGACAGATAGACTTGTCCAGCGCCGATGCCGCCAGGAGCACGAGGAGGAT
 CACACCTCGACACCCAACCCC

ACGCGTACGCGGCCGCTCGAG - GFP Tag - GTTTAA

Protein Sequence:

>RG227586 representing NM_001142446
 Red=Cloning site Green=Tags(s)

MAQAAKQLKKIKDIEAQLQEQKEEESNRKRRNRSDRKKKADAATSFLRAARSGNLDKALDHLRNGVD
 INTCNQNLNGLHLASKEGHVMMVVELLHKEIILETTTKGNTALHIAALAGQDEVVREL VNYGANVNAQ
 SQKGFTPLYMAAQENHLEVVKFLLENGANQNVATEDGFTPLAVALQQGHENNVVAHL INYGTGKGVRLPAL
 HIAARNDTRTAAVLLQNDPNPDVLSKTGFTPLHIAAHYENLNVAQLLLNRGASVNFPTQNGITPLHIAS
 RRGNVIMVRLLLDRGAQIETKTKDEL TPLHCAARNGHVRISEILLDHGAPIQAKTKNGLSPIHMAAQGDH
 LDCVRLLLQYDAEIDDLTDL TPLHVAHCHGHRVAKVLLDKGAKPNSRALNGFTPLHIACKKNHVRVM
 ELLLLKTGASIDAVTESGL TPLHVASFMGHLP IVKNLLQRGASPNVSNVKVETPLHMAARAGHTEVAKYLL
 QNKAKVNAKAKDDQTPHCAARIGHTNMVKLLLENNANPNLATTAGHTPLHIAAREGHVETV LALLEKEA
 SQACMTKKGFTPLHVAAYGKVRVAELLLERDAHPNAAAGKNGL TPLHVAVHHNLDIVKLLPRGGSPHS
 PAWNGYTPLHIAAQNQVEVARSLLYGGSANAESVQGV TPLHLAAQEGHAEMVALLSKQANGNLGNKS
 GLTPLHLVAQEGHVPVADVLIKHGVMVDATTRMGYTPHVAHYGNIKLVKFLQHQADVNAKTKLGYS
 LHQAAQQGHTDIVTLLKNGASPNVSSDGTTPLAIAKRLGYISVTDVVKVVTDETSFVLVSDKHRMSFP
 ETVDEILDVSEDEGTAHITIMGEELISFKAERRDSRDVDEEKELLDVFPKLDQVVESPAIPRIPCAMPET
 VVIRSEEQEQASKEYDEDSLIPSSPATETSDNISPVASPVHTGFLVSMVDARGGSMRGRHNGLRVVIP
 PRTCAAPTRITCRLVKPQKLSPPPPLAEEEEGLASRIIALGPTGAQFLSPVIVEIPHFASHGRGDREL VVL
 RSENGSVWKEHRSRYGESYLDQILNGMDEELGSLEEELEKKRVCRIITDFPL YFVIMSRLCQDYDTIGPE
 GGSLSKSLVPLVQATFPENAVTKRVKLLALQAQVPDEL VTKLLGNQATFSPIVTVEPRRRKFHRPIGLRI
 PLPPSWTDNPRDSGEGDTSRLRLCSVIGGTDQAQWEDITGTTKLVYANECANFTTNVSARFWLSDCPRT
 AEAVNFATLLYKELTAVPYMAKFVIFAKMNDPREGRLRCYCMDDKVDKTEQHENFVEVARSDIEVLE
 GMSLFAELSGNLVPVKKAAQQRSFHFQSFRENRLAMPVKVRDSSREPGGSLSFLRKAMKYEDTQHILCHL
 NITMPPCAKGSAGEDRRRTPTPLALRYSILSESTPGSLSGTEQAEMKMAVISEHLGLSWAELARELQFSV
 EDINRIRVENPNSLLEQSVALLNLWVIREGQANMENLYTALQSIDRGEIVNMLESGRQSRNLKPDRRH
 TDRDYSLSPSQMGYSSQLQDELLSPASLGCALSSPLRADQYWNEVAVLDAIPLAATEHDTMLEMSDMQVW
 SAGLTPSLVTAEDSSLECSKAEDSDATGHEWKLEGALSEEPGPELGSLELVEDDVTSDATNGLIDLLE
 QEEGQRSEEKLPGSKRQDDATGAGQDSENEVSLVSGHQRGQARITHSPTVSQVTERSQDRLQDWDADGSI
 VSYLQDAAQGSWQEEVTQGPSFQGTSTMTGLEPQGSQEYEVKLVSVSEHTWTEQPEAESSQADRRRQ
 QGQEEQVQEAKNFTTQVVQGNFQNIPEQVTEEQFTDEQGNIVTKKIIIRKVVRQIDLSSADAAQEHEED
 HTSTPNP

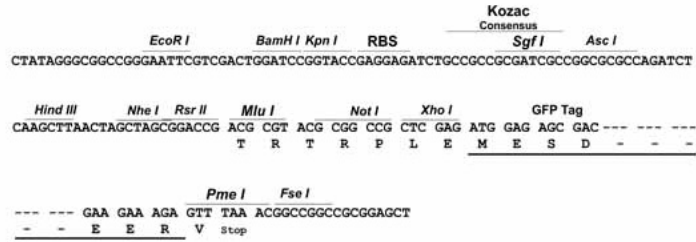
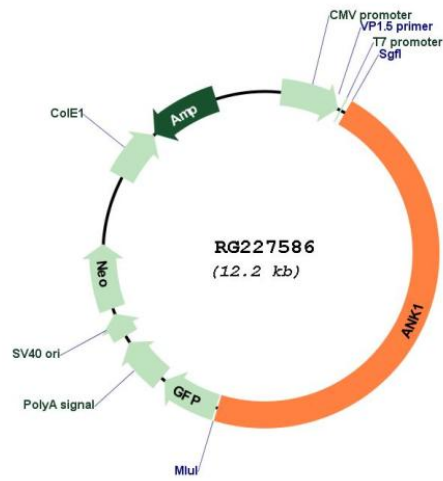
TRTRPLE - GFP Tag - V

Restriction Sites:

SgfI-MluI

Cloning Scheme:

Cloning sites used for ORF Shutting:


Plasmid Map:


ACCN: NM_001142446
ORF Size: 5691 bp

| | |
|-------------------------------|---|
| OTI Disclaimer: | The molecular sequence of this clone aligns with the gene accession number as a point of reference only. However, individual transcript sequences of the same gene can differ through naturally occurring variations (e.g. polymorphisms), each with its own valid existence. This clone is substantially in agreement with the reference, but a complete review of all prevailing variants is recommended prior to use. More info |
| OTI Annotation: | This clone was engineered to express the complete ORF with an expression tag. Expression varies depending on the nature of the gene. |
| Components: | The ORF clone is ion-exchange column purified and shipped in a 2D barcoded Matrix tube containing 10ug of transfection-ready, dried plasmid DNA (reconstitute with 100 ul of water). |
| Reconstitution Method: | <ol style="list-style-type: none">1. Centrifuge at 5,000xg for 5min.2. Carefully open the tube and add 100ul of sterile water to dissolve the DNA.3. Close the tube and incubate for 10 minutes at room temperature.4. Briefly vortex the tube and then do a quick spin (less than 5000xg) to concentrate the liquid at the bottom.5. Store the suspended plasmid at -20°C. The DNA is stable for at least one year from date of shipping when stored at -20°C. |
| RefSeq: | NM_001142446.2 |
| RefSeq Size: | 8486 bp |
| RefSeq ORF: | 5694 bp |
| Locus ID: | 286 |
| UniProt ID: | P16157 |
| Cytogenetics: | 8p11.21 |
| Protein Families: | Transmembrane |
| Gene Summary: | Ankyrins are a family of proteins that link the integral membrane proteins to the underlying spectrin-actin cytoskeleton and play key roles in activities such as cell motility, activation, proliferation, contact and the maintenance of specialized membrane domains. Multiple isoforms of ankyrin with different affinities for various target proteins are expressed in a tissue-specific, developmentally regulated manner. Most ankyrins are typically composed of three structural domains: an amino-terminal domain containing multiple ankyrin repeats; a central region with a highly conserved spectrin binding domain; and a carboxy-terminal regulatory domain which is the least conserved and subject to variation. Ankyrin 1, the prototype of this family, was first discovered in the erythrocytes, but since has also been found in brain and muscles. Mutations in erythrocytic ankyrin 1 have been associated in approximately half of all patients with hereditary spherocytosis. Complex patterns of alternative splicing in the regulatory domain, giving rise to different isoforms of ankyrin 1 have been described. Truncated muscle-specific isoforms of ankyrin 1 resulting from usage of an alternate promoter have also been identified. [provided by RefSeq, Dec 2008] |