

## Product datasheet for **RG227561**

### SLITRK2 (NM\_001144010) Human Tagged ORF Clone

#### Product data:

Product Type:	Expression Plasmids
Product Name:	SLITRK2 (NM_001144010) Human Tagged ORF Clone
Tag:	TurboGFP
Symbol:	SLITRK2
Synonyms:	CXorf1; CXorf2; SLITL1; TMEM257
Mammalian Cell Selection:	Neomycin
Vector:	pCMV6-AC-GFP (PS100010)
E. coli Selection:	Ampicillin (100 ug/mL)



[View online »](#)

**ORF Nucleotide Sequence:**

>RG227561 representing NM\_001144010  
 Red=Cloning site Blue=ORF Green=Tags(s)

TTTTGTAATACGACTCACTATAGGGCGGCCGGGAATTCGTCGACTGGATCCGGTACCGAGGAGATCTGCC  
 GCC**CGGATCGCC**

ATGCTGAGCGCGCTTTGGTTCCCTCAGTGTGTTAACCGTGGCCGGGATCTTACAGACAGAGAGTCGAAAA  
 CTGCCAAAGACATTTGCAAGATCCGCTGTCTGTGCGAAGAAAAGGAAAAGTACTGAATATCAACTGTGA  
 GAACAAAGGATTTACAACAGTTAGCCTGTCCAGCCCCCAGTATCGAATCTATCAGCTTTTTCTCAAT  
 GGAACCTCTTGACAAGACTGTATCAAACGAATTTGTCAATTACTCCAACGCGGTGACTCTTACCTAG  
 GTAACAACGGGTTACAGGAGATCCGAACGGGGCATTCACTGGCCTGAAAACCTCTCAAAGACTGCATCT  
 CAACAACAACAAGCTTGAGATATTGAGGGAGGACACCTTCTAGGCCTGGAGAGCCTGGAGTATCTCCAG  
 GCCGACTACAATTACATCAGTGCATCGAGGCTGGGGCATTCAAGCAACTTAACAAGCTCAAAGTGTCTCA  
 TCCTGAATGACAACCTTCTGCTTCTACTGCCAGCAATGTGTTCCGCTTTGTCTGCTGACCCACTTAGA  
 CCTCAGGGGGAATAGGCTAAAAGTAATGCCTTTTGTGGCGTCTTGAACATATTGGAGGGATCATGGAG  
 ATTCAGCTGGAGGAAAATCCATGGAATTGCACTTGTGACTTACTTCTCTCAAGGCTGGCTAGACACCA  
 TAACTGTTTTTGTGGGAGAGATTGTCTGTGAGACTCCCTTTAGGTTGCATGGGAAAAGACGTGACCCAGCT  
 GACCAGGCAAGACCTCTGTCCCAGAAAAAGTGCCAGTGATTCCAGTCAGAGGGGCAGCCATGCTGACACC  
 CACGTCCAAGGCTGTCACTACAATGAATCCTGCTCTCAACCCAACAGGGCTCCGAAAGCCAGCCGGC  
 CGCCAAAATGAGAAATCGTCCAACCTCTCGAGTACTGTGTCAAAGGACAGGCAAAGTTTTGGACCCAT  
 CATGGTGTACCAGACCAAGTCTCCTGTGCCTCTCACCTGTCCCAGCAGCTGTGTCTGCACCTCTCAGAGC  
 TCAGACAATGGTCTGAATGTAACCTGCCAAGAAAGGAAGTTCATAATATCTCTGACCTGCAGCCAAAAC  
 CGACCAGTCCAAGAAACTCTACCTAACAGGGAACCTATCTTCAAACCTGTCTATAAAGATGACCTTTAGA  
 ATACAGTTCTTTGGACTTACTGCACTTAGGAAACAACAGGATTGCAGTCATTCAGGAAGGTGCCTTTACA  
 AACCTGACCAGTTTACGCAGACTTTATCTGAATGGCAATTACCTTGAAGTGTGTACCTTCTATGTTTG  
 ATGGACTGCAGAGCTTGAATATCTCTATTTAGAGTATAATGTCATTAAGGAAATTAAGCCTCTGACCTT  
 TGATGCTTTGATTAACCTACAGTACTGTTTCTGAACAACAACCTTCTTCGGTCTTACCTGATAATATA  
 TTTGGGGGACGGCCCTAACAGGCTGAATCTGAGAAACAACCATTTTTCTCACCTGCCCGTAAAGGGG  
 TTCTGGATCAGCTCCCGCTTTCATCCAGATAGATCTGCAGGAGAACCCTGGGACTGTACCTGTGACAT  
 CATGGGCTGAAAGACTGGACAGAACATGCCAATTCCTGTGCATTAATGAGGTGACTTGCGAATCT  
 CCTGCTAAGCATGCAGGGGAGATACTAAAATTTCTGGGGAGGAGGCTATCTGTCCAGACAGCCAAAAC  
 TGTGAGATGGAACCGTCTGTCAATGAATCACAATACAGACACACCTCGGTGCTTAGTGTGTCTCCTAG  
 TTCTATCTGAACTACACACTGAAGTTCACCTGTCTGTCTTAATTCTGGGATTGCTTGTGTTTTTCATC  
 TTATCTGTCTGTTTTGGGGCTGGTTTATTCGTCTTTGTCTTGAACGCCGAAAGGGAGTGCCGAGCGTTC  
 CCAGGAATACCAACAACCTTAGACGTAAGCTCCTTTCAATTACAGTATGGGTCTTACAACACTGAGACTCA  
 CGATAAAACAGACGGCCATGTCTACAATATACCCCCACCTGTGGGTGAGATGTGCAAAAACCCATC  
 TACATGCAGAAGGAAGGAGACCCAGTAGCCTATTACCGAAACCTGCAAGAGTTGAGCTATAGCAACCTGG  
 AGGAGAAAAAAGAAGAGCCAGCCACACCTGCTTACACAATAAGTGCCACTGAGCTGCTAGAAAAGCAGGC  
 CACACCAAGAGAGCCTGAGCTGCTGTATCAAAAATTGCTGAGCGAGTCAAGGAACTTCCAGCGCAGGC  
 CTAGTCCACTATAACTTTTGTACCTTACCTAAAAGGCAGTTTGCCCTTCTATGAATCTCGACGCCAAA  
 ACCAAGACAGAATCAATAAAACCGTTTTATATGGAACCTCCAGGAAATGCTTTGTGGGGCAGTCAAACCC  
 CAACCACCTTTACTGCAAGCTAAGCCGAATCAGAACCAGGACTACCTCGAAGTTCTGAAAAACAACT  
 GCAATCAGTCAGCTG

**ACGGTACGCGGCCGCTCGAG** - GFP Tag - GTTTAA

**Protein Sequence:** >RG227561 representing NM\_001144010  
Red=Cloning site Green=Tags(s)

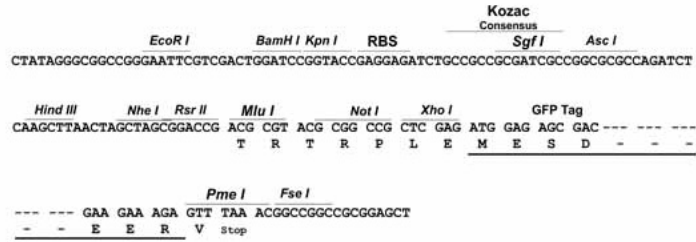
MLSGVWFLSVLTVAGILQTESRKTAKDICKIRCLCEEKENVLNINCENKGFTTVSLLQPPQYRIYQLFLN  
GNLLTRLYPNEFVNYSNAVTLHLGNGLQEIRTGAFSGLKTLKRLHLNNKLEILREDTFLGLESLEYLQ  
ADYNYISAIEAGAFSKLNKLVILNDNLLLSPSNVFRFVLLTHLDLRGNRLKVMPFAGVLEHIGGIME  
IQLEENPWNCTCDLLPLKAWLDTITVFVGEIVCETPFRLHGKDVTQLTRQDLCPRKSADSSQRGSHADT  
HVQRLSPTMNPALNPTRAPKASRPPKMRNRPTPRVTVSKDRQSFPIMVYQTKSPVPLTCPSSCVCTSQS  
SDNGLNVNCQERKFTNISDLQPKPTSPKKLYLTGNYLQTVYKNDLLEYSSDLLHLGNNRIAVIQEAGFT  
NLTSLRRLYLNGNYLEVLPSMFDGLQSLQYLLEYNVIKEIKPLTFDALINLQLLFLNNNLLRSLPDNI  
FGGTALTRLNLRNNHFSHLPVKGVLQPAFIQIDLQENPWDCTCDIMGLKDWTEHANSPIINEVTCES  
PAKHAGEILKFLGREAIKPDSPNLSDGTVLSMNHNTDTPRSLSVSPSSPELHTEVPLSVLILGLLVVFI  
LSVCFGAGLFVFLKRRKGVPSVPRNTNNDVSSFQYQYGSYNTETHDKTDGHVYNYIPPPVGMQCNPI  
YMQKEGDPVAYYRNLEQFYSYNLEEKKEEPATPAYTISATELLEKQATPREPELLYQNI AERVKELPSAG  
LVHYNFCTLPKRQFAPSYESRRQNQDRINKTVLYGTPRCKFVGGQSKPNHPLLQAKPQSEPDYLEVLEKQT  
AISQL

TRTRPLE - GFP Tag - V

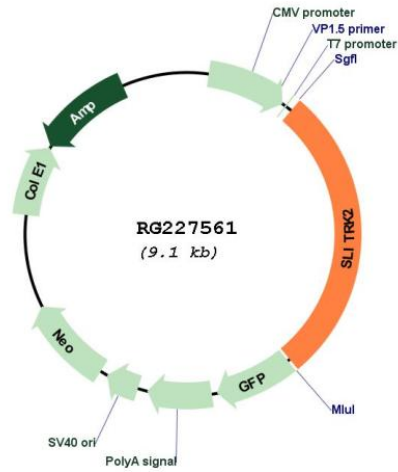
**Restriction Sites:** Sgfl-MluI

Cloning Scheme:

Cloning sites used for ORF Shutting:



Plasmid Map:



<b>ACCN:</b>	NM_001144010
<b>ORF Size:</b>	2535 bp
<b>OTI Disclaimer:</b>	The molecular sequence of this clone aligns with the gene accession number as a point of reference only. However, individual transcript sequences of the same gene can differ through naturally occurring variations (e.g. polymorphisms), each with its own valid existence. This clone is substantially in agreement with the reference, but a complete review of all prevailing variants is recommended prior to use. <a href="#">More info</a>
<b>OTI Annotation:</b>	This clone was engineered to express the complete ORF with an expression tag. Expression varies depending on the nature of the gene.
<b>Components:</b>	The ORF clone is ion-exchange column purified and shipped in a 2D barcoded Matrix tube containing 10ug of transfection-ready, dried plasmid DNA (reconstitute with 100 ul of water).
<b>Reconstitution Method:</b>	<ol style="list-style-type: none"><li>1. Centrifuge at 5,000xg for 5min.</li><li>2. Carefully open the tube and add 100ul of sterile water to dissolve the DNA.</li><li>3. Close the tube and incubate for 10 minutes at room temperature.</li><li>4. Briefly vortex the tube and then do a quick spin (less than 5000xg) to concentrate the liquid at the bottom.</li><li>5. Store the suspended plasmid at -20°C. The DNA is stable for at least one year from date of shipping when stored at -20°C.</li></ol>
<b>RefSeq:</b>	<a href="#">NM_001144010.2</a> , <a href="#">NP_001137482.1</a>
<b>RefSeq Size:</b>	4144 bp
<b>RefSeq ORF:</b>	2538 bp
<b>Locus ID:</b>	84631
<b>UniProt ID:</b>	<a href="#">Q9H156</a>
<b>Cytogenetics:</b>	Xq27.3
<b>Protein Families:</b>	Transmembrane
<b>Gene Summary:</b>	This gene encodes an integral membrane protein that contains two N-terminal leucine-rich repeats domains and contains C-terminal regions similar to neurotrophin receptors. The encoded protein may play a role in modulating neurite activity. Alternatively spliced transcript variants encoding the same protein have been described.[provided by RefSeq, Feb 2010]