

Product datasheet for **RG227531**

CAPN8 (NM_001143962) Human Tagged ORF Clone

Product data:

Product Type:	Expression Plasmids
Product Name:	CAPN8 (NM_001143962) Human Tagged ORF Clone
Tag:	TurboGFP
Symbol:	CAPN8
Synonyms:	nCL-2
Mammalian Cell Selection:	Neomycin
Vector:	pCMV6-AC-GFP (PS100010)
E. coli Selection:	Ampicillin (100 ug/mL)



[View online »](#)

ORF Nucleotide
Sequence:

>RG227531 representing NM_001143962
Red=Cloning site Blue=ORF Green=Tags(s)

TTTTGTAATACGACTCACTATAGGGCGGCCGGGAATTCGTCGACTGGATCCGGTACCGAGGAGATCTGCC
GCCGCGATCGCC

ATGGCAGCCCAGGCAGCTGGTGTATCTAGGCAGCGGGCAGCCACTCAAGTCTTGGCTCCAACAAAACG
CTTTGAAGTACTTGGGCCAGGATTTCAAGACCCTGAGGCAACAGTGCTTGGACTCAGGGTCTATTAA
GGACCCTGAGTTCCCAGCATGTCCATCAGCTTTGGGCTACAAGGATCTTGGACCAGGCTCTCCGAAACT
CAAGGCATCATCTGGAAGCGGCCACGGAGTTGTGCCAGCCCTCAGTTTATCGTTGGTGGAGCCACGC
GCACAGACATTTGTGAGGTGGTCTAGGTGACTGCTGGCTTCTGGCTGCCATTGCCTCCCTGACCCTGAA
TGAAGAGCTGCTTACCAGGTGGTCCCAGGGACCAGGACTTCCAGGAGAACTATGCGGGAATCTTTCAC
TTTCAGTCTGGCAGTACGGAGAGTGGGTGGAGGTGGTTCATTGACGACAGGCTGCCACCAAGAATGGAC
AGCTGCTCTTCTACACTCGGAACAAGGCAATGAATTCGGAGTGCCTGCTGGAGAAAGCTATGCCAA
GCTTAATGGTTGTTATGAGGCTCTCGTGGAGGTCCACAGTGGAGGGGTTTGGAGATTTACAGGTGGC
ATCTCTGAGTTTTATGACCTGAAGAAACCACAGCCAATCTATATCAGATCATCCGGAAGCCCTCTGTG
CGGGTCTCTGCTGGGCTGCTCCATTGATGTCTCCAGTGCAGCCGAAGCCGAAGCCATCACCAGCCAGAA
GCTGGTTAAGAGTCATGCGTACTCTGCTACTGGAGTGAAGAGGTGAATTTCCAGGGCCATCCAGAGAAG
CTGATCAGACTCAGGAATCCATGGGGTGAAGTGGAGTGGTCCGGGAGCCTGGAGCGATGATGCACCAGAGT
GGAATCACATAGACCCCCGGCGGAAGGAAGAACTGGACAAGAAAGTTGAGGATGGAGAATTTGGATGTC
ACTTTGAGATTTCTGAGGCAGTCTCTCGTTGGAGATCTGCAACCTGTCCCGGACTCTCTGAGTAGC
GAGGAGGTGCACAAATGGAACCTGGTCTGTCAACGGCCACTGGACCCGGGGCTCCACAGCTGGGGGT
GCCAGAACTACCAGCCAGTACTGGACCAATCCCCAGTTCAAAATCCGTTTGGATGAAGTGGATGAGGA
CCAGGAGGAGAGCATCGGTGAACCTGCTGTACAGTGTCTGGGCTGATGCAGAAAAATCGCAGGTGG
CGGAAGCGGATAGGACAAGGCATGCTTAGCATCGGCTATGCCGTCTACCAGGTTCCCAAGGAGCTGGAGA
GTCACACGGACGCACACTTGGGCCGGGATTTCTTCTGGCCTACCAGCCCTCAGCCCGCACCAGCACCTA
CGTCAACCTGCGGGAGGTCTCTGGCCGGGCGGCTGCCCTGGGGAGTACCTGGTGGTCCATCCACA
TTTGAACCCTTCAAAGACGGCGAGTTCTGCTTGGAGTGTCTCAGAGAAGAAGGCCAGGCCCTAGAAA
TTGGGGATGTGGTAGCTGGAACCCATATGAGCCACATCCAGTGGAGTGGATCAGGAAGATGACCAGTT
CAGGAGGCTGTTGAGAAGTTGGCAGGGAAGGATTCTGAGATTACTGCCAATGCACTCAAGATACTTTG
AATGAGGCGTTTTCCAAGAGAACAGACATAAAATTCGATGGATCAACATCAACACTGCAGGGAAATGA
TCAGTCTGTTGGATAGCAATGGAACGGGCACTTTGGGGCGGTGGAATCAAGACGCTCTGGCTGAAGAT
TCAGAAGTATCTGGAGATCTATTGGAAACTGATTATAACCACTCGGGCACCATCGATGCCACAGAGATG
AGGACAGCCCTCAGGAAGGCAGGTTTACCCTCAACAGCCAGGTGCAGCAGACCATTGCCCTGCGGTATG
CGTGCAGCAAGCTCGGCATCAACTTTGACAGCTTCGTGGCTTGTATGATCCGCCTGGAGACCCTCTTCAA
ACTATTCAGCCTTCTGGACGAAGACAAGGATGGCATGGTTCAGCTCTCTGGCCGAGTGGCTGTGCTGC
GTGTTGGTC

ACGCGTACGCGGCCGCTCGAG - GFP Tag - GTTTAA

Protein Sequence: >RG227531 representing NM_001143962
 Red=Cloning site Green=Tags(s)

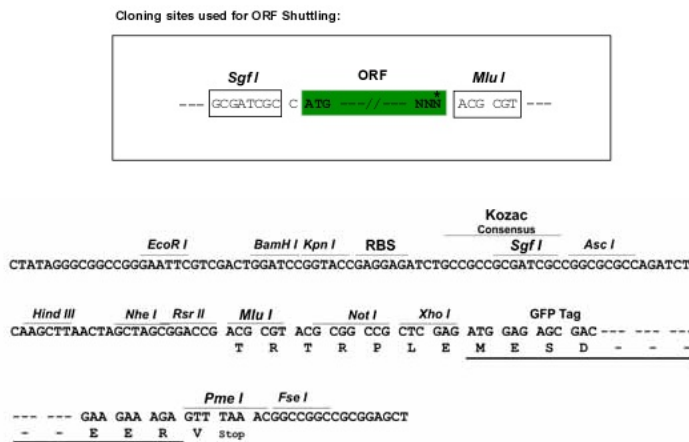
```

MAAQAAGVSRQRAATQGLGSNQNALXYLGQDFKTLRQQCLDSGVLFKDPEFPACPSALGYKDLGPGSPQT
QGIWKRPTELCPSPQFIVGGATRTDICQGGLDGCWLLAAIASLTLNEELLYRVVPRDQDFQENYAGIFH
FQFWQYGEWVEVVIDDLPTKNGQLFLHSEQGNFWSALLEKAYAKLNGCYEALAGGSTVEGFEDFTGG
ISEFYDLKKPPANLYQIIRKALCAGSLLGCSIDVSSAAEAEAITSQKLVKSHAYSVTGVEEVNFQGHPEK
LIRLRNPWGEVEWSGAWSDDAPEWNHIDPRRKEELDKKVEDGEFWMSSDFVRQFSRLEICNLSPDSLSS
EEVHKWNLVLFNGHWTRGSTAGGCQNYPATYWTNPQFKIRLDEVDEDQEEISIGEPCTVLLGLMQKNRRW
RKIRIGQGMLSIGYAVYQVPKELESHTDAHLGRDFFLAYQPSARTSTYVNLREVSGRARLPPGEYLVVPS
TEFVKDGEFCLRVFSEKKAQALEIGDVGAGNPYEPHPSEVDQEDDQFRRLFEKLAGKDSEITANALKILL
NEAFSKRTDIKFDGFNINTCREMISLLDSNGTGLGAVEFKTLWLKIQKYLEIYWETDYNHSGTIDAHEM
RTALRKAGFTLNSQVQQTIALRYACSKLGINFDSFVACMIRLETFLKFLSLLDEDKDGVMQLSLAEWLCC
VLV
  
```

TRTRPLE - GFP Tag - V

Restriction Sites: SgfI-MluI

Cloning Scheme:



ACCN: NM_001143962

ORF Size: 2109 bp

OTI Disclaimer: The molecular sequence of this clone aligns with the gene accession number as a point of reference only. However, individual transcript sequences of the same gene can differ through naturally occurring variations (e.g. polymorphisms), each with its own valid existence. This clone is substantially in agreement with the reference, but a complete review of all prevailing variants is recommended prior to use. [More info](#)

OTI Annotation: This clone was engineered to express the complete ORF with an expression tag. Expression varies depending on the nature of the gene.

Components: The ORF clone is ion-exchange column purified and shipped in a 2D barcoded Matrix tube containing 10ug of transfection-ready, dried plasmid DNA (reconstitute with 100 ul of water).

Reconstitution Method:

1. Centrifuge at 5,000xg for 5min.
2. Carefully open the tube and add 100ul of sterile water to dissolve the DNA.
3. Close the tube and incubate for 10 minutes at room temperature.
4. Briefly vortex the tube and then do a quick spin (less than 5000xg) to concentrate the liquid at the bottom.
5. Store the suspended plasmid at -20°C. The DNA is stable for at least one year from date of shipping when stored at -20°C.

RefSeq: [NM_001143962.1](#), [NP_001137434.1](#)

RefSeq Size: 2427 bp

RefSeq ORF: 2112 bp

Locus ID: 388743

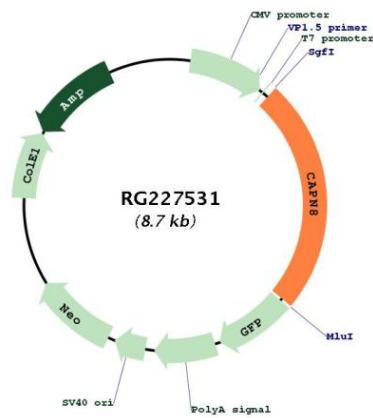
UniProt ID: [A6NHC0](#)

Cytogenetics: 1q41

Protein Families: Druggable Genome

Gene Summary: Calcium-regulated non-lysosomal thiol-protease. Involved in membrane trafficking in the gastric surface mucus cells (pit cells) and may involve the membrane trafficking of mucus cells via interactions with coat protein. Proteolytically cleaves the beta-subunit of coatomer complex (By similarity).[UniProtKB/Swiss-Prot Function]

Product images:



Circular map for RG227531