

## Product datasheet for **RG227520**

### **TOM1 (NM\_001135732) Human Tagged ORF Clone**

#### **Product data:**

Product Type:	Expression Plasmids
Product Name:	TOM1 (NM_001135732) Human Tagged ORF Clone
Tag:	TurboGFP
Symbol:	TOM1
Mammalian Cell Selection:	Neomycin
Vector:	pCMV6-AC-GFP (PS100010)
E. coli Selection:	Ampicillin (100 ug/mL)



[View online »](#)

**ORF Nucleotide Sequence:**

>RG227520 representing NM\_001135732  
 Red=Cloning site Blue=ORF Green=Tags(s)

TTTTGTAATACGACTCACTATAGGGCGGCCGGAATTCGTCGACTGGATCCGGTACCGAGGAGATCTGCC  
 GCC**CGATCGCC**

ATGGACTTTCTCCTGGGAACCCGTTCCAGTCTCCAGTGGGACAGCGCATCGAGAAAGCCACAGATGGT  
 CCCTGCAGAGCGAGGACTGGGCCCTCAACATGGAGATCTGCGACATCATCAACGAGACGGAGGAAGTCC  
 CAAAGATGCCCTCCGAGCAGTAAAGAAGAGAATCGTGGGAATAAGAACTTCCACGAGGTGATGCTGGT  
 CTCACAGTCTTAGAAACCTGTGTCAAGAACTGCGGGCACCCTCCACGTGCTGGTGGCCAGCCAGGACT  
 TCGTGGAGAGTGTGCTGGTGGAGACCATCTGCCAAGAACAACCCACCCACCATCGTGCATGACAAAGT  
 GCTCAACCTCATCCAGTCTGGGCTGACGCGTCCGCGAGCTCGCCGATCTGACAGGTGTGGTACCATC  
 TATGAGGACCTGCGGAGGAAAGGCTGGAGTCCCATGACTGACCTGGACATGCTGTACCCATCCACA  
 CACCCAGAGGACCGTGTCAACTCAGAGACACAATCAGGACAGGATTCTGTGGGACTGACTCCAGCCA  
 GCAAGAGGACTCTGGCCAGCATGTGCCCTCTGCCCGCCCGCCATACTCTCCGGTACACGCCCATA  
 GCACCAACCCCGAACAGATTGGGAAGCTGCGCAGTGGAGTGGTGGTGGGAACGTGAGGGTGA  
 TGTCCGAGATGCTGACGGAGCTGGTGCCACCCAGGCCGAGCCCGAGACCTGGAGCTGTGCAGGAGCT  
 CAACCGCACGTGCCGAGCCATGCAGCAGCGGTCTGGAGCTCATCCCTCAGATCGCAATGAGCAGCTG  
 ACAGAGGAGCTGCTCATCGTCAATGACAATCTCAACAATGTGTTCTGCGCCATGAACGGTTTGAACGGT  
 TCCGAACAGGCCAGACCACCAAGGCCCAAGTGGGCGGAGCCGCGAGCTGACCTGATCGACATGGGCC  
 TGACCCAGCAGCCACCGCAACCTCTATCCAGCTGGCAGGAATGAACCTGGGCTCCAGCAGTGTGAGA  
 GCTGGCCTGCAGTCTCTGGAGGCTCTGGTCCAGTGGAAAGATGAGTTTGACATGTTTGGCTGACACGGG  
 GCAGCTACTGGCTGACCAACGGAAGAGTAAAATACGAAGCCCAAGCAACAGCAGCGCTGGCTGG  
 AGCCCTGGACGCCCGGACAGCAGACTGGCGCATCCAGTACCCAGGCTGCCTCATGGAGGACATC  
 GAGCAGTGGCTGTCCACTGACGTGGTAATGATGCGGAAGAGCCTAAGGGGGTACCAGCGAAGGTAAT  
 TTGACAAATTCCTGGAAGAACGGGCCAAAGCCGCGGACCGATTGCCAACCTCTCCAGCCCTCAGCTGA  
 GGGGCCCCGGTCCCCATCTGGCCAGCGCCCGGAAGAAGACCCAGGAGAAAGATGATGACATGCTG  
 TTTGCCTTA

**ACGGGCCGCTCGAG** – GFP Tag – GTTTAA

**Protein Sequence:**

>RG227520 representing NM\_001135732  
 Red=Cloning site Green=Tags(s)

MDFLLGNPFSSPVGQRIEKATDGSLSQEDWALNMEICDIINETEEGPKDALRAVKKRIVGNKNFHEVMLA  
 LTVLETCVKNCGHRFHVLVASQDFVESVLVRTILPKNNPPTIVHDKVLNLIQSWADAFRSPDLTGVVTI  
 YEDLRRKGLEFPMTDLMLSPIHTPQRTVFNSETQSGQDSVGTDSQQEDSGQHAAPLPAPPILSGDTPI  
 APTPEQIGKLRSELEMVSGNVRVMSEMLTEL VPTQAEPADLELLQELNRTCRAQQRVLELIPQIANEQL  
 TEELLIVNDLNNVFLRHERFERFRTGQTTKAPSEAEPADLIDMGPDPAATGNLSSQLAGMNLGSSSVR  
 AGLQSLASGRLEDFDMFALTRGSSLADQRKEVKYEAPQATDGLAGALDARQQSTGAIPVTAQCLMEDI  
 EQWLSTDVGNDAEEPQVTSSEKFKDFLEERAKAADRLPNLSSPSAEGPPGPPSGPAPRKKTQEKKDDML  
 FAL

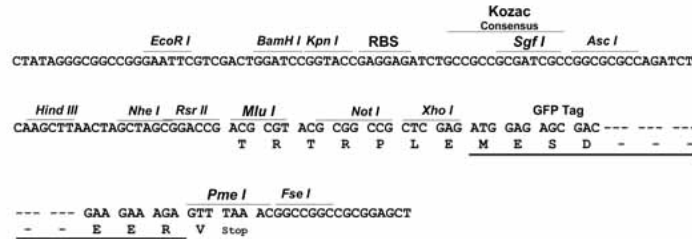
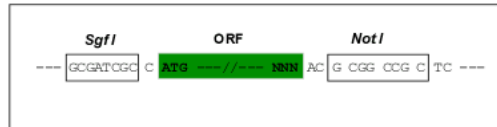
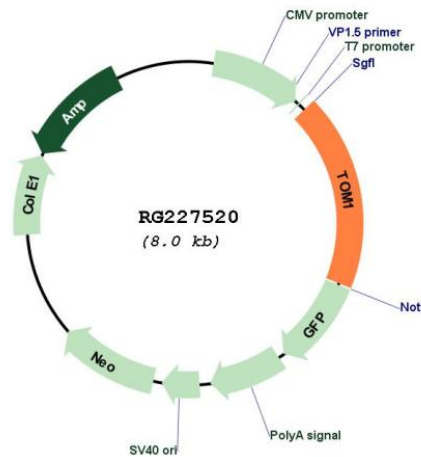
**TRPLE** – GFP Tag – V

**Restriction Sites:**

Sgfl-NotI

**Cloning Scheme:**

Cloning sites used for ORF Shuttling:


**Plasmid Map:**

**ACCN:** NM\_001135732

**ORF Size:** 1479 bp

**OTI Disclaimer:** The molecular sequence of this clone aligns with the gene accession number as a point of reference only. However, individual transcript sequences of the same gene can differ through naturally occurring variations (e.g. polymorphisms), each with its own valid existence. This clone is substantially in agreement with the reference, but a complete review of all prevailing variants is recommended prior to use. [More info](#)
**OTI Annotation:** This clone was engineered to express the complete ORF with an expression tag. Expression varies depending on the nature of the gene.

**Components:** The ORF clone is ion-exchange column purified and shipped in a 2D barcoded Matrix tube containing 10ug of transfection-ready, dried plasmid DNA (reconstitute with 100 ul of water).

<b>Reconstitution Method:</b>	<ol style="list-style-type: none"><li>1. Centrifuge at 5,000xg for 5min.</li><li>2. Carefully open the tube and add 100ul of sterile water to dissolve the DNA.</li><li>3. Close the tube and incubate for 10 minutes at room temperature.</li><li>4. Briefly vortex the tube and then do a quick spin (less than 5000xg) to concentrate the liquid at the bottom.</li><li>5. Store the suspended plasmid at -20°C. The DNA is stable for at least one year from date of shipping when stored at -20°C.</li></ol>
<b>RefSeq:</b>	<a href="#">NM_001135732.1</a> , <a href="#">NP_001129204.1</a>
<b>RefSeq Size:</b>	2399 bp
<b>RefSeq ORF:</b>	1482 bp
<b>Locus ID:</b>	10043
<b>UniProt ID:</b>	<a href="#">O60784</a>
<b>Cytogenetics:</b>	22q12.3
<b>Protein Families:</b>	Druggable Genome
<b>Gene Summary:</b>	This gene was identified as a target of the v-myb oncogene. The encoded protein shares its N-terminal domain in common with proteins associated with vesicular trafficking at the endosome. It is recruited to the endosomes by its interaction with endofin. Several alternatively spliced transcript variants encoding different isoforms have been found for this gene. [provided by RefSeq, Oct 2008]