

Product datasheet for **RG227504**

WEE1 (NM_001143976) Human Tagged ORF Clone

Product data:

Product Type:	Expression Plasmids
Product Name:	WEE1 (NM_001143976) Human Tagged ORF Clone
Tag:	TurboGFP
Symbol:	WEE1
Synonyms:	WEE1A; WEE1hu
Mammalian Cell Selection:	Neomycin
Vector:	pCMV6-AC-GFP (PS100010)
E. coli Selection:	Ampicillin (100 ug/mL)



[View online »](#)

ORF Nucleotide Sequence:

>RG227504 representing NM_001143976
 Red=Cloning site Blue=ORF Green=Tags(s)

TTTTGTAATACGACTCACTATAGGGCGGCCGGGAATTCGTCGACTGGATCCGGTACCGAGGAGATCTGCC
 GCC**CGGATCGCC**

ATGAGTTCCTGAGCCGACAGCAGCCGCCACCCCGCGCCGGGGCGCCCTGCACCTTGCAGCAGAG
 AGCTGATCTTCTCGCCCTGCAGCGACTGTGAGGAGGAGGAAGAAGAGGAGGAGGAGGGCAGCGGCCA
 CAGCACCGGGGAGGACTCGGCCCTTTCAAGAGCCCGACTCGCCGCTGCCGCCCGCGGAGCCCCACGGAG
 CCCGGGCCGAGCGCCGCTCGCCGGGCGGCCCCCGGGAGCCCCGCGAGCTGGAGGAGGACCTGT
 TGCTGCCCGCGCCTGCCGGGCGGGACGAGGCGGGCGGTGGGGCGGAGGGCGACTCGTGGGAGGAGGA
 GGGCTTCGGCTCCTCGTCGCGGTCAAGTCGCCGGCGGCCCTACTTCTGGTAGCTCTTCTCGCCG
 GTGCGCTGCGGCGGCCAGGAGATGCGTCGCCCGGGGTTCGGGGCGCGCCGGGCGGCGAAGGCCCGC
 GCTCGCCGCGGCCGACCACCCGGGACCCCGCCACACAAGACCTTCGCAAGCTGCGACTCTTCGACAC
 CCCGCACACGCCCAAGAGTTTGTCTCCAAAGCTCGGGGAATTGATCCAGCTCTGTTAACTCCGGGGT
 AGTTCTCTCTTATGGATACAGAAAAATCAGGAAAAAGGGAATTTGATGTGCGACAGACTCCTCAAGTGA
 ATATTAATCCTTTACTCCGGATTCTTTGTTGCTTCATTCTCAGGACAGTGTGCTGTAAGAAAGAGAAC
 GTATTGGAATGATTCTGTGGTGAAGACATGGAAGCCAGTGATTATGAGCTTGAAGATGAAACAAGACCT
 GCTAAGAGAATACAATTAAGAAAGCAATATGAAGTCCCGGTATACAACAGAAATTCATGAGCTAGAGA
 AAATCGGCTCTGGAGAATTTGGTTCTGTATTAAGTGTGTGAAGAGGCTGGATGGATGCATTTATGCCAT
 TAAGCGATCAAAAAGCCATTGGCGGGCTCTGTTGATGAGCAGAACGCTTTGAGAGAAGTATATGCTCAT
 GCAGTCTTGGACAGCATTCTCATGTAGTTCGATATTTCTCTGCTGGGCGAGAAGATGATCATATGCTTA
 TACAGAATGAATATCGTAATGGTGAAGTTTACTGATGCTATAAGTGAAGTACAGAATCATGATTA
 CTTTAAAGAAGCAGAGTTGAAGGATCTCCTTTTGCAAGTTGGCCGAGGCTTGAGGTATATTCATTCAATG
 TCTTTGGTTCACATGGATATAAACCTAGTAATATTTTCATATCTGAACTCAATCCCAATGCTGCCCT
 CTGAAGAAGGAGACGAAGATGATTGGGCATCCAACAAAGTTATGTTTAAATAGGTGATCTTGGGCATG
 AACAGGATCTCCAGTCCACAAGTTGAAGAGGGCGATAGTCGTTTTCTTGCAAATGAAGTTTACAGGAG
 AATTATACCCATCTACAAAAGCAGATATTTTTCGCTTGCCCTCACAGTGGTATGTGCTGCTGGTCTG
 AACCTCTCCGAGAAATGGAGATCAATGGCATGAAATCAGACAGGGTAGATTACCTCGGATACCACAAGT
 GCTTTCCCAAGAATTTACAGAGTTGCTAAAAGTTATGATTCATCCAGATCCAGAGAGAAGACCTTCAGCA
 ATGGCACTGGTAAAGCATTTCAGTATTGCTGCTCCGCTTCTAGAAAGAGTGCAGAACAATTACGAATAGAAT
 TGAAATGCCGAAAAGTTCAAAAATCACTTTTACAAAAGAAGTCAAGAAAGCACAGATGGCAAAAAGCTGC
 AGCTGAGGAAAAGAGCACTCTTCACTGACCGGATGGCCACTAGGTCCACCACCCAGAGTAATAGAATCT
 CGACTTATTGAAAGAAAATGAACCGCTCTGTCAGCCTTACTATATAC

ACGCGTACGCGGCCGCTCGAG - GFP Tag - GTTTAA

Protein Sequence:

>RG227504 representing NM_001143976
 Red=Cloning site Green=Tags(s)

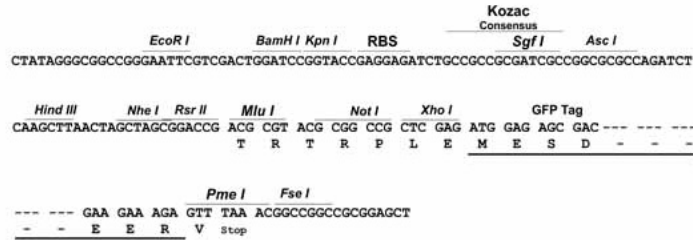
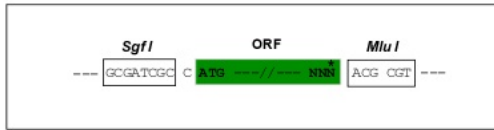
MSFLSRQQPPPPRRAGAACLTRQKLIIFSPCSDCEEEEEEEEEEGSGHSTGEDSAFQEPDSPLPPARSPT
 PGPERRRSPGPAPGSPGELEEDLLLPACPGADEAGGGAEGDSWEEEGFGSSSPVKSPAAPYFLGSSFSP
 VRCGGPGDASPRGCGARRAGEGRRSPRDHPGTPPHKTRKLRLLFDTPHTPKSLLSKARGIDSSSVKLRG
 SSLFMDTEKSGKREFDVRQTPQVNINPFTPDSLHSSGQRRRKRTYWNDSGEDMEASDYELEDETRP
 AKRITITESNMKSRYTTEFHELEKIGSGEFGSVFKCVKRLDGCIIYAIKRSKKPLAGSVDEQNALREYYAH
 AVLQGHSHVRYFSAWAEDDHMLIQNEYRNGSLADAI SENYRIMSIFYKEAELKDLLLQVGRGLRYIHS
 SLVHMDIKPSNIFISRTSIPNAASEEGDEDDWASNKVMFKIGDLGHVTRI SSPQVEEGDSRFLANEVLQE
 NYTHLPKADIFALALTVCAAGAELPRNGDQWHEIRQGLRPRIPQVLSQEFTELLKVMIHDPERRPSA
 MALVKHSVLLSASRKSAEQLRIELNAEKFNLSLLQKELKKAQMAKAAAEERALFTDRMATRSTTQSNRTS
 RLIGKMMNRSVSLTIY

TRTRPLE - GFP Tag - V

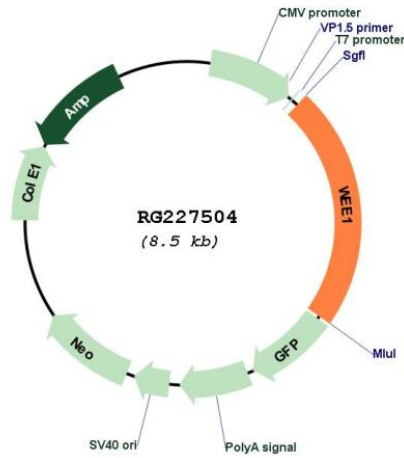
Restriction Sites: SgfI-MluI

Cloning Scheme:

Cloning sites used for ORF Shutting:



Plasmid Map:



ACCN: NM_001143976

ORF Size: 1296 bp

OTI Disclaimer:	The molecular sequence of this clone aligns with the gene accession number as a point of reference only. However, individual transcript sequences of the same gene can differ through naturally occurring variations (e.g. polymorphisms), each with its own valid existence. This clone is substantially in agreement with the reference, but a complete review of all prevailing variants is recommended prior to use. More info
OTI Annotation:	This clone was engineered to express the complete ORF with an expression tag. Expression varies depending on the nature of the gene.
Components:	The ORF clone is ion-exchange column purified and shipped in a 2D barcoded Matrix tube containing 10ug of transfection-ready, dried plasmid DNA (reconstitute with 100 ul of water).
Reconstitution Method:	<ol style="list-style-type: none">1. Centrifuge at 5,000xg for 5min.2. Carefully open the tube and add 100ul of sterile water to dissolve the DNA.3. Close the tube and incubate for 10 minutes at room temperature.4. Briefly vortex the tube and then do a quick spin (less than 5000xg) to concentrate the liquid at the bottom.5. Store the suspended plasmid at -20°C. The DNA is stable for at least one year from date of shipping when stored at -20°C.
RefSeq:	NM_001143976.1 , NP_001137448.1
RefSeq Size:	3234 bp
RefSeq ORF:	1299 bp
Locus ID:	7465
UniProt ID:	P30291
Cytogenetics:	11p15.4
Protein Families:	Druggable Genome, Protein Kinase, Stem cell - Pluripotency
Protein Pathways:	Cell cycle
Gene Summary:	This gene encodes a nuclear protein, which is a tyrosine kinase belonging to the Ser/Thr family of protein kinases. This protein catalyzes the inhibitory tyrosine phosphorylation of CDC2/cyclin B kinase, and appears to coordinate the transition between DNA replication and mitosis by protecting the nucleus from cytoplasmically activated CDC2 kinase. [provided by RefSeq, Jul 2008]