

Product datasheet for **RG227496**

Emi1 (FBXO5) (NM_001142522) Human Tagged ORF Clone

Product data:

Product Type:	Expression Plasmids
Product Name:	Emi1 (FBXO5) (NM_001142522) Human Tagged ORF Clone
Tag:	TurboGFP
Symbol:	FBXO5
Synonyms:	EMI1; FBX5; Fbxo31
Mammalian Cell Selection:	Neomycin
Vector:	pCMV6-AC-GFP (PS100010)
E. coli Selection:	Ampicillin (100 ug/mL)



[View online »](#)

ORF Nucleotide Sequence:

>RG227496 representing NM_001142522
 Red=Cloning site Blue=ORF Green=Tags(s)

TTTTGTAATACGACTCACTATAGGGCGGCCGGGAATTCGTCGACTGGATCCGGTACCGAGGAGATCTGCC
 GCC**CGGATCGCC**

ATGAGCCGGCGCCCTGCAGCTGCGCCCTACGGCCACCCCGCTGCTCCTGCAGCGCCAGCCACGGCGAG
 TGACAGCCGGCGGCCCTCGACCCTCGATAGTTGTAAGAAGAAAGTTCTACCCCTTTCTGTCAAAT
 GAAGTGTGATTTAATTGTAACCATGTTTCATCCGGACTTAAACTGGTAAAACCTGATGACATTGGAAGA
 CTAGTTTCTACACCCCTGCATATTTGGAAGGTTCTGTAAAGACTGCATTAAAGACTATGAAAGGCTGT
 CATGTATTGGGTACCGATTGTGAGCCCTAGGATTGTAGAAGCTGAAACTGAAAGCAAGCGCTTGCAATA
 CAAGGAAAATCAACATGTGCAACAGACACTTAATAGTACAATGAAATAGAAGCACTAGAGACCAGTAGA
 CTTTATGAAGACAGTGGCTATTCCTCATTTTCTACAAAGTGGCCTCAGTGAACATGAAGAAGGTAGCC
 TCCTGGAGGAGAAATTCGGTGACAGTCTACAATCTGCCTGCTACAAATACAAAGCCAGACCAATATCC
 CAACAAAACTTGTGCCAGTTCTCATTTTGAAGAAAGTGGTTTGTCAACATTAAGAAAGAAATGCAAAA
 CGAAATCCTAAAGTAGATCGGGAGATGCTGAAGGAAATATAGCCAGAGGAAATTTAGACTGCAGAATA
 TAATTGGCAGAAAAATGGCCTAGAATGTGTAGATATTCTCAGCGAACTCTTTCGAAGGGGACTCAGACA
 TGTCTTAGCAACTATTTAGCACAACTCAGTGACATGGACTTAATCAATGTGTCTAAAGTGAACAACT
 TGGAGAAGATCCTAGAAGATGATAAGGGGGCATTCCAGTTGTACAGTAAAGCAATACAAAGAGTTACCG
 AAAACAACAATAAATTTACCTCATGCTTCAACCAGAGAATATGTTATGTTTCAAGCCCACTGGCTTC
 TGTTTCAAGAAATCAGCAGCCAGACTTCTCTCAAAAAAGATGCTCAACCAAGTTATCCAATCAAGGTGAT
 CAGAAAGGTTCTACTTATAGTCGACACAATGAATCTCTGAGGTTGCCAAGACATTGAAAAAGAACGAAA
 GCCTCAAAGCCTGTATTGCTGTAATTCACCTGCAAAAATGATTGCTATTTACAACGGGCAACCTGCAA
 ACGAGAAGGCTGTGGATTTGATTATTGTACGAAGTGTCTCTGTAATTATCATACTACTAAAGACTGTTCA
 GATGGCAAGCTCCTCAAAGCCAGTTGTAATAGGTCCCCTGCCTGGTACAAAGAAAAGCAAAAAGAATT
 TACGAAGATTG

ACGCGTACGCGGCCGCTCGAG – GFP Tag – GTTTAA

Protein Sequence:

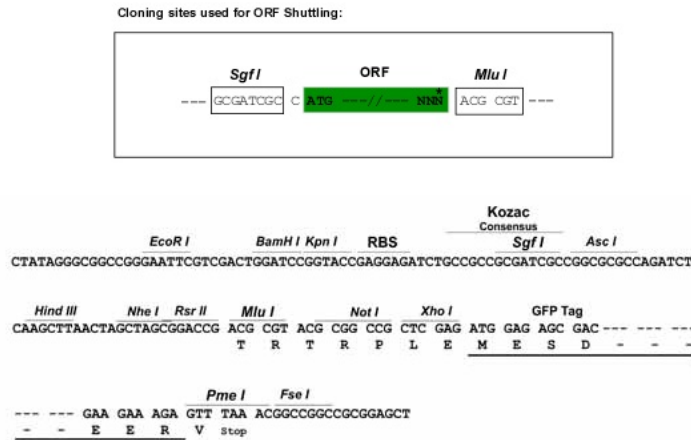
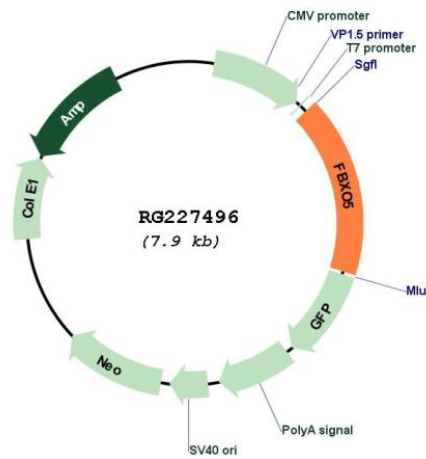
>RG227496 representing NM_001142522
 Red=Cloning site Green=Tags(s)

MSRRPCSCALRPPRSCSASPSAVTAAGRPRPSDSCKEESSTLSVKMKCDFNCNHVHSGCLKLVKPDIGR
 LVSYPAYLEGSKDCIKDYERLSCI GSPIVSPRIVELETESKRLHNKENQHVVQTLNSTNEIEALETSR
 LYEDSGYSSFLQSGLEHEEGSLLEENFGDSLQSCLLQIQSPDQYPKNLLPVLHFEKVCSTLKKNAK
 RNPKVDREMLKEIIARGNFRLQNIIGRKMGLECDILSELFRRLRHVLATILAQLSDMDLINVSKVSTT
 WKKILEDKGFQLYSKAIQRTENNKFSPHASTREYVMFRTPLASVQKSAAQTSLLKKAQTKLSNQG
 QKGSTYSRHNEFSEVAKTLKKNESLKACIRCNSPAKYDCYLQRATCKREGCGFDYCTKCLCNYHTTKDCS
 DGKLLKASCKIGPLPGTKKSKNLRL

TRTRPLE – GFP Tag – V

Restriction Sites:

Sgfl-MluI

Cloning Scheme:

Plasmid Map:


ACCN: NM_001142522

ORF Size: 1203 bp

OTI Disclaimer: The molecular sequence of this clone aligns with the gene accession number as a point of reference only. However, individual transcript sequences of the same gene can differ through naturally occurring variations (e.g. polymorphisms), each with its own valid existence. This clone is substantially in agreement with the reference, but a complete review of all prevailing variants is recommended prior to use. [More info](#)

OTI Annotation: This clone was engineered to express the complete ORF with an expression tag. Expression varies depending on the nature of the gene.

Components:	The ORF clone is ion-exchange column purified and shipped in a 2D barcoded Matrix tube containing 10ug of transfection-ready, dried plasmid DNA (reconstitute with 100 ul of water).
Reconstitution Method:	<ol style="list-style-type: none">1. Centrifuge at 5,000xg for 5min.2. Carefully open the tube and add 100ul of sterile water to dissolve the DNA.3. Close the tube and incubate for 10 minutes at room temperature.4. Briefly vortex the tube and then do a quick spin (less than 5000xg) to concentrate the liquid at the bottom.5. Store the suspended plasmid at -20°C. The DNA is stable for at least one year from date of shipping when stored at -20°C.
RefSeq:	<u>NM_001142522.1</u> , <u>NP_001135994.1</u>
RefSeq Size:	2269 bp
RefSeq ORF:	1206 bp
Locus ID:	26271
UniProt ID:	<u>Q9UKT4</u>
Cytogenetics:	6q25.2
Protein Families:	Druggable Genome
Protein Pathways:	Oocyte meiosis
Gene Summary:	<p>This gene encodes a member of the F-box protein family which is characterized by an approximately 40 amino acid motif, the F-box. The F-box proteins constitute one of the four subunits of the ubiquitin protein ligase complex called SCFs (SKP1-cullin-F-box), which function in phosphorylation-dependent ubiquitination. The F-box proteins are divided into 3 classes: Fbws containing WD-40 domains, Fbls containing leucine-rich repeats, and Fbxs containing either different protein-protein interaction modules or no recognizable motifs. The protein encoded by this gene belongs to the Fbxs class. This protein is similar to xenopus early mitotic inhibitor-1 (Emi1), which is a mitotic regulator that interacts with Cdc20 and inhibits the anaphase promoting complex. Alternatively spliced transcript variants encoding different isoforms have been identified. [provided by RefSeq, Dec 2008]</p>