

Product datasheet for **RG227489**

TMEM25 (NM_001144038) Human Tagged ORF Clone

Product data:

Product Type:	Expression Plasmids
Product Name:	TMEM25 (NM_001144038) Human Tagged ORF Clone
Tag:	TurboGFP
Symbol:	TMEM25
Mammalian Cell Selection:	Neomycin
Vector:	pCMV6-AC-GFP (PS100010)
E. coli Selection:	Ampicillin (100 ug/mL)
ORF Nucleotide Sequence:	>RG227489 representing NM_001144038 Red=Cloning site Blue=ORF Green=Tags(s)

TTTTGTAATACGACTCACTATAGGGCGGCCGGGAATTCGTCGACTGGATCCGGTACCGAGGAGATCTGCC
GCC**CGATCGCC**

ATGGCGCTGCCTCCAGGCCAGCCGCCCTCCGGCACACACTGCTGCTCCTGCCAGCCCTTCTGAGCTCAG
GTTGGGGGAGTTGGAGCCACAAATAGATGGTCAGACCTGGGCTGAGCGGGCACTTCGGGAGAATGAACG
CCACGCCTTACCTGCCGGTGGCAGGGGGCCCTGGCACCCCAAGATTGGCCTGGTATCTGGATGGACAG
CTGCAGGAGGCCAGCACCTCAAGACTGCTGAGCGTGGGAGGGGAGGCCTTCTCTGGAGGCCAGCACCT
TCACTGTCACTGCCATCGGGCCAGCATGAGCTCAACTGCTCTCTGCAGGACCCAGAAGTGGCCGATC
AGCCAACGCCTCTGTATCCTTAATGTGAATCAAGCCAGAGATTGCCCAAGTCGGCGCCAAGTACCAG
GAAGCTCAGGGCCAGGCCTCCTGGTTGTCTGTTTGGCCCTGGTGCCTGCAACCCCGCCGCAATGTCA
CCTGGATCGACCAGGATGGGCCAGTACTGTCAACACCTCTGACTTCTGGTGTGGATGCGCAGAATA
CCCCTGGCTCACCAACCACCGTGCAGCTGCAGCTCCGAGCCTGGCACACAACCTCTCGGTGGTGGCC
ACCAATGACGTGGGTGTACCAGTGCCTCGCTCCAGCCCAAGGCCCTCCCGGCACCCATCTCTGATAT
CAAGTACTCAACAACCTAAACTCAACAACGTGCGCCTGCCACGGGAGAACATGTCCCTCCCGTCCAA
CCTTCAGCTCAATGACCTCACTCCAGATTCCAGAGTGAACCAGCAGACCGGCAGATGGCTCAGAACAAC
AGCCGGCCAGAGCTTCTGGACCCGAGCCCGCGGCCTCCTCACCAGCCAAGGAAGAAGAAATCAGGACA
AAGACGCA

ACGCGTACGCGGCCGCTCGAG - GFP Tag - GTTTAA



[View online »](#)

Protein Sequence: >RG227489 representing NM_001144038
Red=Cloning site Green=Tags(s)

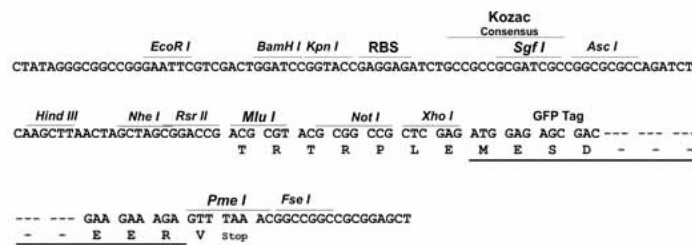
MALPPGPAALRHTLLLLPALLSSGWGELEPQIDGQTWAERALRENERHAFTRVAGGPGTPRLAWYLDGQ
 LQEASTSRLLSVGGAEFSGGTSTFTVTAHRAQHELNCSLQDPRSGRSANASVILNVQFKPEIAQVGAKYQ
 EAQGPGLLVLFALVRANPPANVTWIDQDGPVTVNTSDFLVLDAQNYPWLTNHTVQLQLRSLAHNLSVVA
 TNDVGVTSASLPAPGPSRHPSLISSDSNNLKLNNVRLPRENMSLPSNLQLNDLTPDSRVKPADRQMAQNN
 SRPELLDPEPGLLTSQGRRNQDKDA

TRTRPLE - GFP Tag - V

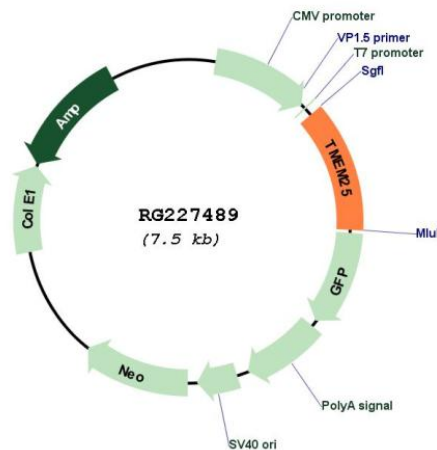
Restriction Sites: SgfI-MluI

Cloning Scheme:

Cloning sites used for ORF Shutting:



Plasmid Map:



ACCN: NM_001144038

ORF Size: 918 bp

OTI Disclaimer:	The molecular sequence of this clone aligns with the gene accession number as a point of reference only. However, individual transcript sequences of the same gene can differ through naturally occurring variations (e.g. polymorphisms), each with its own valid existence. This clone is substantially in agreement with the reference, but a complete review of all prevailing variants is recommended prior to use. More info
OTI Annotation:	This clone was engineered to express the complete ORF with an expression tag. Expression varies depending on the nature of the gene.
Components:	The ORF clone is ion-exchange column purified and shipped in a 2D barcoded Matrix tube containing 10ug of transfection-ready, dried plasmid DNA (reconstitute with 100 ul of water).
Reconstitution Method:	<ol style="list-style-type: none">1. Centrifuge at 5,000xg for 5min.2. Carefully open the tube and add 100ul of sterile water to dissolve the DNA.3. Close the tube and incubate for 10 minutes at room temperature.4. Briefly vortex the tube and then do a quick spin (less than 5000xg) to concentrate the liquid at the bottom.5. Store the suspended plasmid at -20°C. The DNA is stable for at least one year from date of shipping when stored at -20°C.
RefSeq:	NM_001144038.2
RefSeq Size:	1546 bp
RefSeq ORF:	921 bp
Locus ID:	84866
UniProt ID:	Q86YD3
Cytogenetics:	11q23.3
Protein Families:	Transmembrane
Gene Summary:	In neurons, modulates the degradation of NMDA receptor GRIN2B subunit. Plays a role in the regulation of neuronal excitability.[UniProtKB/Swiss-Prot Function]